



November 2, 2009

Department of Natural Resources
Oil and Gas Conservation Commission
The Chancery Building
1120 Lincoln St., Suite 801
Denver, CO 80203

Re: **20 Day Certification Letter - 318A-e**
WORRIES 35-14
Township 4 North, Range 65 West, Section 14: SW/4SW/4
Unit Spacing: 04N-65W-14 S/2SW/4
04N-65W-23 N/2NW/4
Weld County, Colorado

Ladies/Gentlemen:

Kerr-McGee Oil and Gas Onshore LP ("KMG") hereby certifies to the Director that a twenty (20) day notice has been given by certified mail to all owners in the proposed wellbore spacing unit. We have not received any objections to such well location, proposed spacing unit, or additional producing formation. KMG hereby requests the Director to approve the boundary well.

If you have any questions or issues regarding this permit, please contact Cheryl Light at (720) 929-6461.

Very truly yours,

Kerr-McGee Oil and Gas Onshore LP

A handwritten signature in cursive script that reads 'Cheryl Light'.

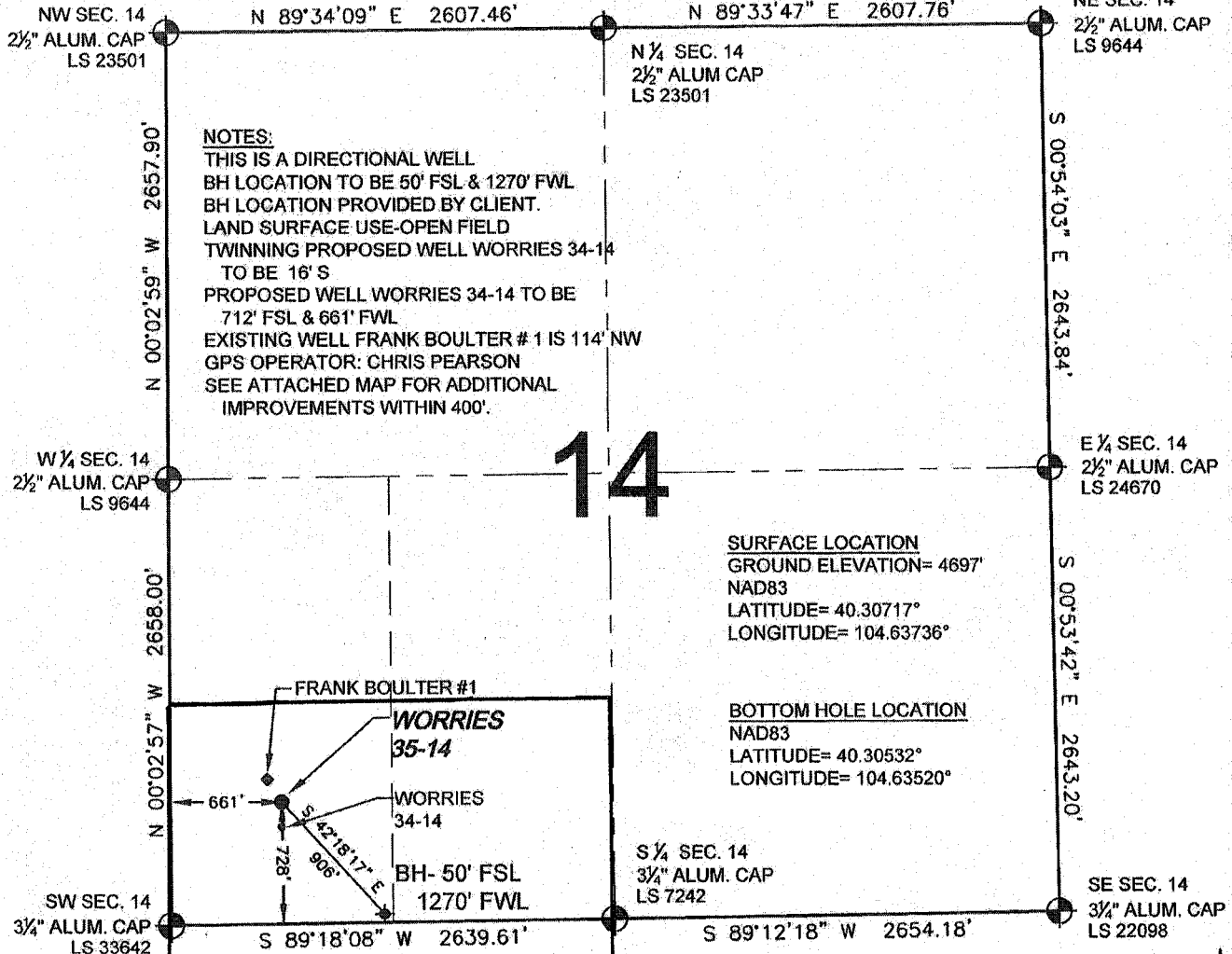
Cheryl Light
Senior Regulatory Analyst

:cl
Enclosure

318A Proposed Spacing
Unit Plan

WELL LOCATION CERTIFICATE: WORRIES 35-14

SECTION 14, TOWNSHIP 4 NORTH, RANGE 65 WEST, 6TH P.M.



NOTES:
THIS IS A DIRECTIONAL WELL
BH LOCATION TO BE 50' FSL & 1270' FWL
BH LOCATION PROVIDED BY CLIENT.
LAND SURFACE USE-OPEN FIELD
TWINNING PROPOSED WELL WORRIES 34-14
TO BE 16' S
PROPOSED WELL WORRIES 34-14 TO BE
712' FSL & 661' FWL
EXISTING WELL FRANK BOULTER #1 IS 114' NW
GPS OPERATOR: CHRIS PEARSON
SEE ATTACHED MAP FOR ADDITIONAL
IMPROVEMENTS WITHIN 400'.

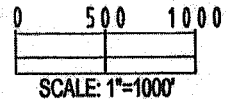
SURFACE LOCATION
GROUND ELEVATION= 4697'
NAD83
LATITUDE= 40.30717°
LONGITUDE= 104.63736°

BOTTOM HOLE LOCATION
NAD83
LATITUDE= 40.30532°
LONGITUDE= 104.63520°

WELL WORRIES 35-14 TO BE LOCATED 728' FSL AND 661' FWL, SECTION 14, T4N, R65W OF THE 6th P.M.

LEGEND

⊕ = EXISTING MONUMENT ♦ = BOTTOM HOLE BH = BOTTOM HOLE
● = PROPOSED WELL ◆ = EXISTING WELL

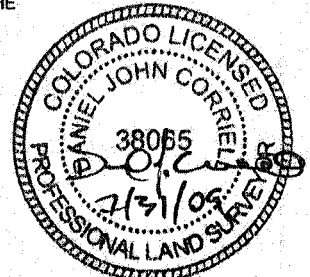


NOTES:

- THIS SURVEY WAS DONE BY GPS METHODS AND CONFORMS TO THE MINIMUM STANDARDS SET BY THE C.O.G.C.C., RULE NO. 215 (PDOP VALUE IS LESS THAN 6.0, LATITUDE AND LONGITUDE ARE ACCURATE TO 5 DECIMAL PLACES, AND GPS OBSERVATIONS ARE DIFFERENTIAL AND DONE BY QUALIFIED PERSONNEL.)
- ELEVATIONS SHOWN AT THE WELL HEAD, AS WELL AS HORIZONTAL CONTROL, ARE BASED ON GPS-RTK VALUES DERIVED FROM DOING 2-HOUR STATIC GPS SESSIONS AND REDUCTIONS USING O.P.U.S. SOLUTIONS.
VERTICAL = NAVD88; HORIZONTAL = NAD83/92
- THE BEARINGS SHOWN HEREON ARE BASED ON GPS OBSERVATIONS BETWEEN THE MONUMENTS SHOWN HEREON AS FOUND ON THE FIELD DATE BELOW.
- DISTANCES SHOWN ARE AT GROUND LEVEL, AS MEASURED IN THE FIELD, WITH TIES TO WELLS MEASURED AT A PERPENDICULAR TO SECTION LINES.

I, DANIEL J. CORRIELL, A LICENSED PROFESSIONAL LAND SURVEYOR IN THE STATE OF COLORADO DO HEREBY CERTIFY TO **KERR-MCGEE OIL & GAS ONSHORE LP**, THAT THE SURVEY AND WELL LOCATION CERTIFICATE SHOWN HEREON WERE DONE BY ME OR UNDER MY DIRECT SUPERVISION AND THAT THE DRAWING SHOWN HEREON ACCURATELY DEPICTS THE PROPOSED LOCATION OF THE WELL **WORRIES 35-14**. THIS CERTIFICATE DOES NOT REPRESENT A LAND SURVEY PLAT OR IMPROVEMENT SURVEY PLAT AS DEFINED BY C.R.S. 38-51-102 AND CANNOT BE RELIED UPON TO DETERMINE OWNERSHIP.

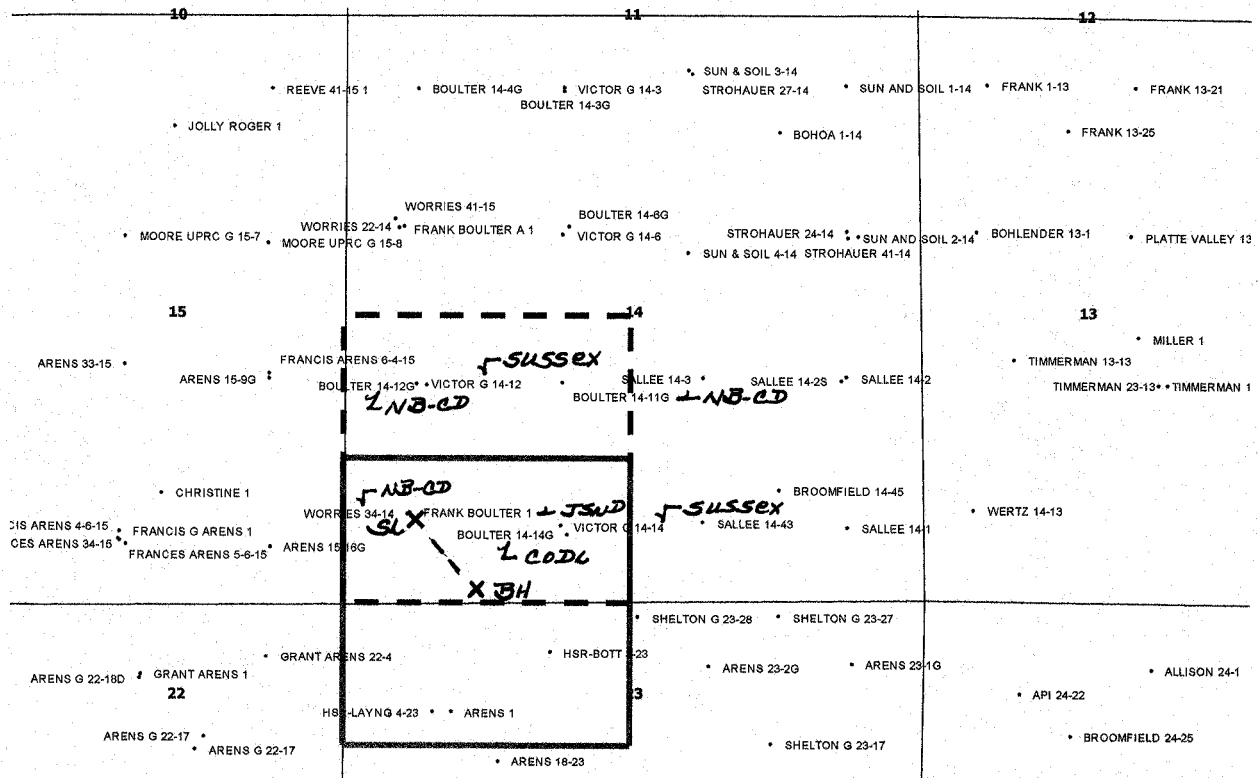
DANIEL J. CORRIELL, PLS 38065
COLORADO LICENSED PROFESSIONAL LAND SURVEYOR
FOR AND ON BEHALF OF P.F.S., LLC



FIELD DATE: 06-15-09	WELL NAME: WORRIES 35-14
DRAWING DATE: 06-16-09	SURFACE LOCATION: WELD COUNTY, COLORADO SW 1/4 SW 1/4, SEC. 14, T4N, R65W
BY: SMF	

NOTICE: ACCORDING TO COLORADO LAW YOU MUST COMMENCE ANY LEGAL ACTION BASED UPON ANY DEFECT IN THIS SURVEY WITHIN THREE YEARS AFTER YOU FIRST DISCOVER SUCH DEFECT. IN NO EVENT MAY ANY ACTION BASED UPON ANY DEFECT IN THIS SURVEY BE COMMENCED MORE THAN TEN YEARS FROM THIS SAID DATE OF THIS CERTIFICATION SHOWN HEREON.

WORRIES 35-14 **SWSW Sec. 14 T4N-R65W**



LEGEND



Proposed 160 acre Spacing Unit (Solid line).



Bottom Hole Located SW/4SW/4, Sec. 14-T4N-R65W (Dashed line).

This 1/4 Section has less than 8 bottom hole wells producing from the Codell, Niobrara & J Sand Formations.