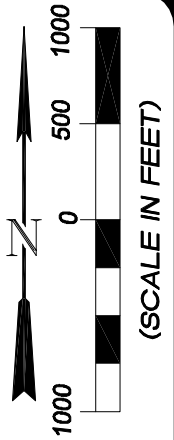
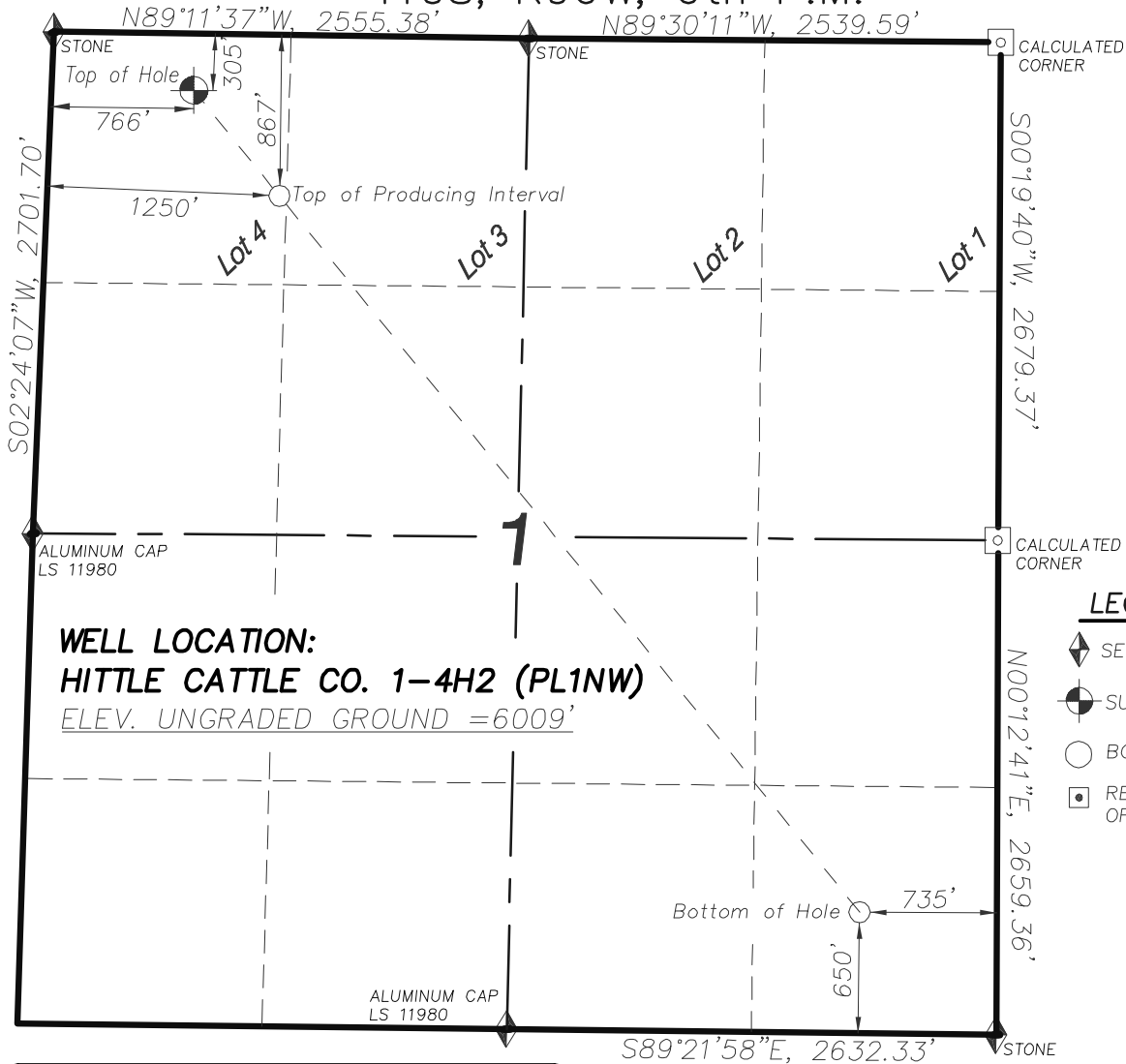


T10S, R96W, 6th P.M.



LEGEND

- SECTION CORNER LOCATED
- SURFACE LOCATION
- BOTTOM HOLE LOCATION
- RECORD LOCATION OF CORNER

WELL LOCATION:
HITTLE CATTLE CO. 1-4H2 (PL1NW)
ELEV. UNGRADED GROUND = 6009'

Hittle Cattle Co. 1-4H2 (PL1NW) Well

(WELLHEAD LOCATION) NAD 83
 LATITUDE = 39.223699° N
 LONGITUDE = 108.059555° W
 (BOTTOM HOLE LOCATION) NAD 83
 LATITUDE = 39.211560° N
 LONGITUDE = 108.046920° W

CERTIFICATE OF SURVEYOR

I, TED TAGGART OF FRUITA, COLORADO HEREBY CERTIFY THAT THIS MAP WAS MADE FROM NOTES TAKEN DURING AN ACTUAL SURVEY MADE BY ME OR UNDER MY DIRECTION FOR ENCANA OIL & GAS (USA) INC. AND THAT THIS LOCATION HAS BEEN STAKED ON THE GROUND AS SHOWN HEREON.



906 Main Street
 Evanston, Wyoming 82930
 Phone No. (307) 789-4545

NOTES

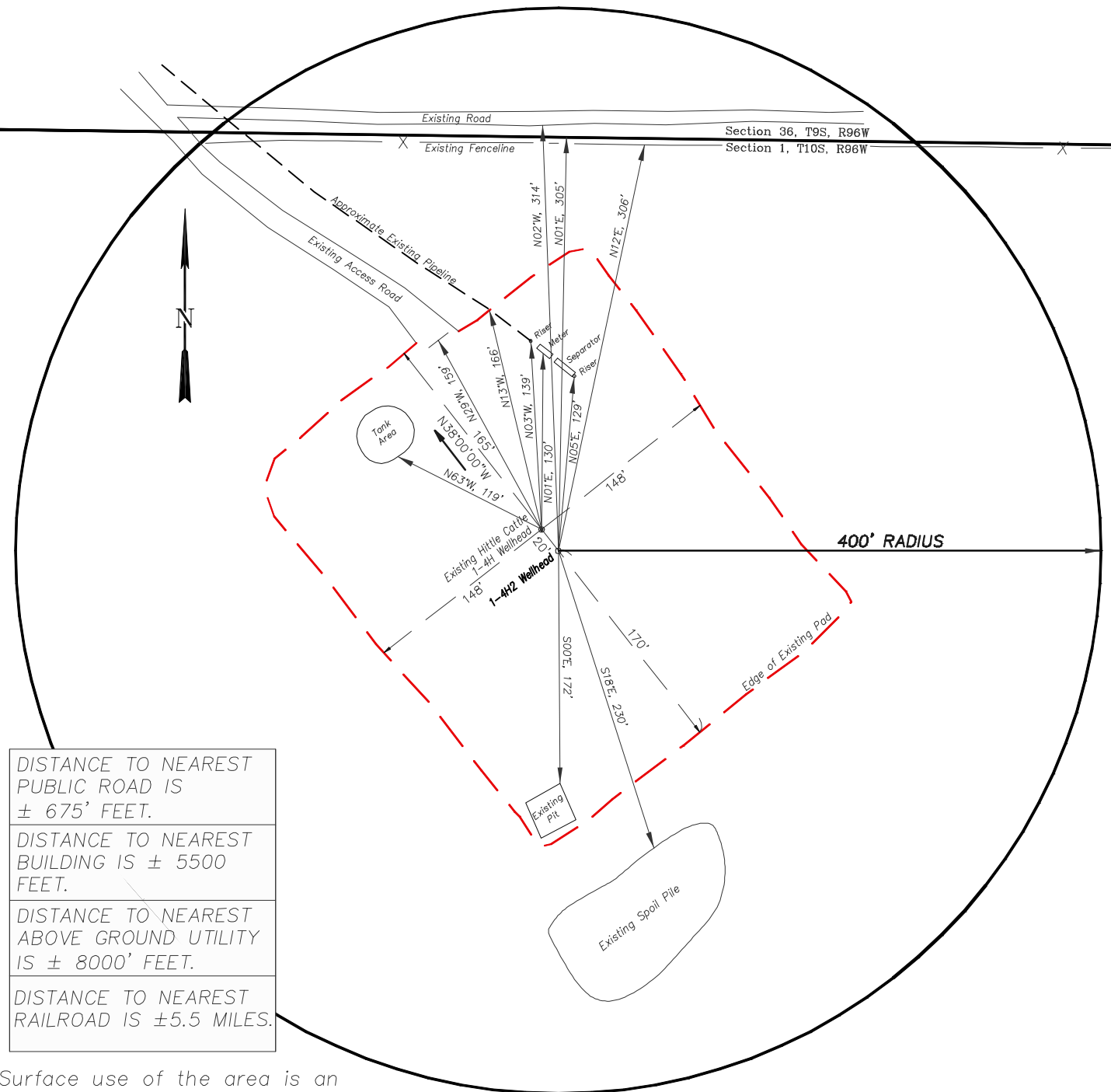
1. WELL FOOTAGES ARE MEASURED AT RIGHT ANGLES TO SECTION LINES.
2. BASIS OF BEARING: GEODETIC- BASED ON GPS OBSERVATIONS.
3. ELEVATIONS BASED ON GPS OBSERVATIONS, NAVD 88 (GEOID 03), POST PROCESSED USING NGS OPUS.
4. THE BOTTOM HOLE BEARS S39°01'06"E, 5692' FROM TOP OF HOLE.
5. SEE ADDENDUM TO LEGAL PLAT (SHEET 1b) FOR VISIBLE IMPROVEMENTS WITHIN 400 FEET OF THE PROPOSED WELLHEAD.
6. CONTROL FOR SURVEY WAS ESTABLISHED USING DIFFERENTIALLY CORRECTED GPS FROM AN OPUS BASED CONTROL NETWORK. WELL LOCATION WAS ESTABLISHED USING NON-GPS CONVENTIONAL METHODS, THEREFORE NO PDOP READING WAS TAKEN.

MAP to ACCOMPANY
APPLICATION for PERMIT to DRILL
EnCana Oil & Gas (USA) Inc.
Hittle Cattle Co. 1-4H2 (PL1NW) Well

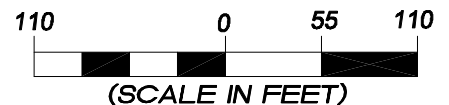
NW1/4 NW1/4, SECTION 1
 T10S, R96W, 6th P.M.
 MESA COUNTY, COLORADO

Location Plat		Scale: 1" = 1000'	SHEET 1a OF 10
Project No.	09-04-06	Date Surveyed: 2/09/09	
Date Drawn:	5/11/09	Latest Revision Date:	

EnCana Oil & Gas (USA) Inc.
ADDENDUM TO LEGAL PLATS FOR
PL1NW Well Pad
SECTION 1, T 10 S, R 96 W, 6th P.M.



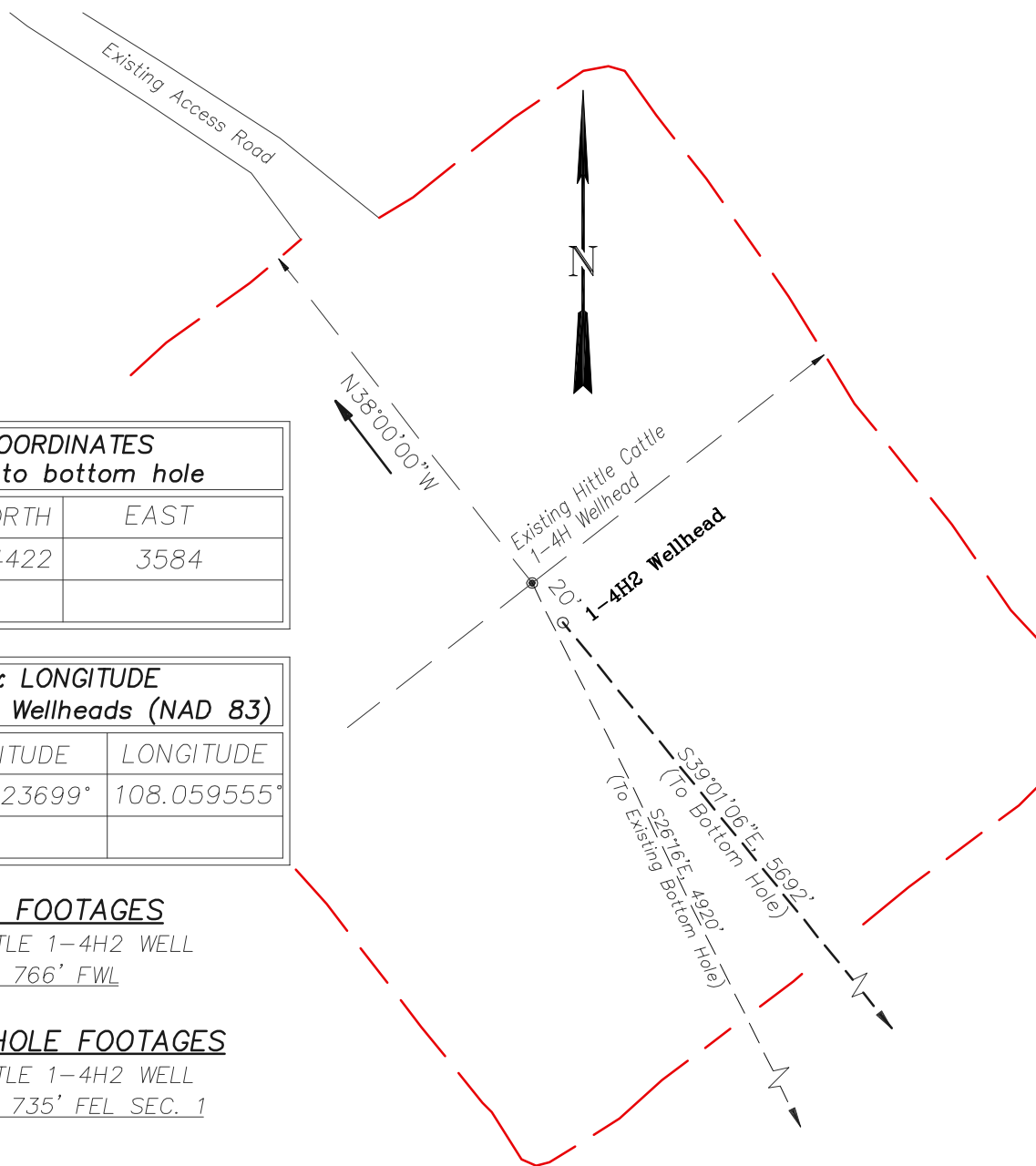
Surface use of the area is an existing well pad. Surrounding area of use is grazing. Vegetation consists mainly of sage brush, oak brush and native grasses.



906 Main Street
 Evanston, Wyoming 82930
 Phone No. (307) 789-4545

Addendum		Scale: 1" = 110'	SHEET 1b OF 10
Project No.	09-04-06	Date Surveyed: 2/09/09	
Date Drawn:	5/11/09	Latest Revision Date:	

EnCana Oil & Gas (USA) Inc.
PL1NW Well Pad
Section 1, T10S, R96W, 6th P.M.
WELL PAD INTERFERENCE PLAT



RELATIVE COORDINATES From top hole to bottom hole		
WELL	NORTH	EAST
1-4H2	-4422	3584

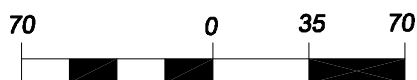
LATITUDE & LONGITUDE Surface position of Wellheads (NAD 83)		
WELL	LATITUDE	LONGITUDE
1-4H2	39.223699°	108.059555°

TOP HOLE FOOTAGES

HITTLE CATTLE 1-4H2 WELL
305' FNL & 766' FWL

BOTTOM HOLE FOOTAGES

HITTLE CATTLE 1-4H2 WELL
650' FSL & 735' FEL SEC. 1



(SCALE IN FEET)

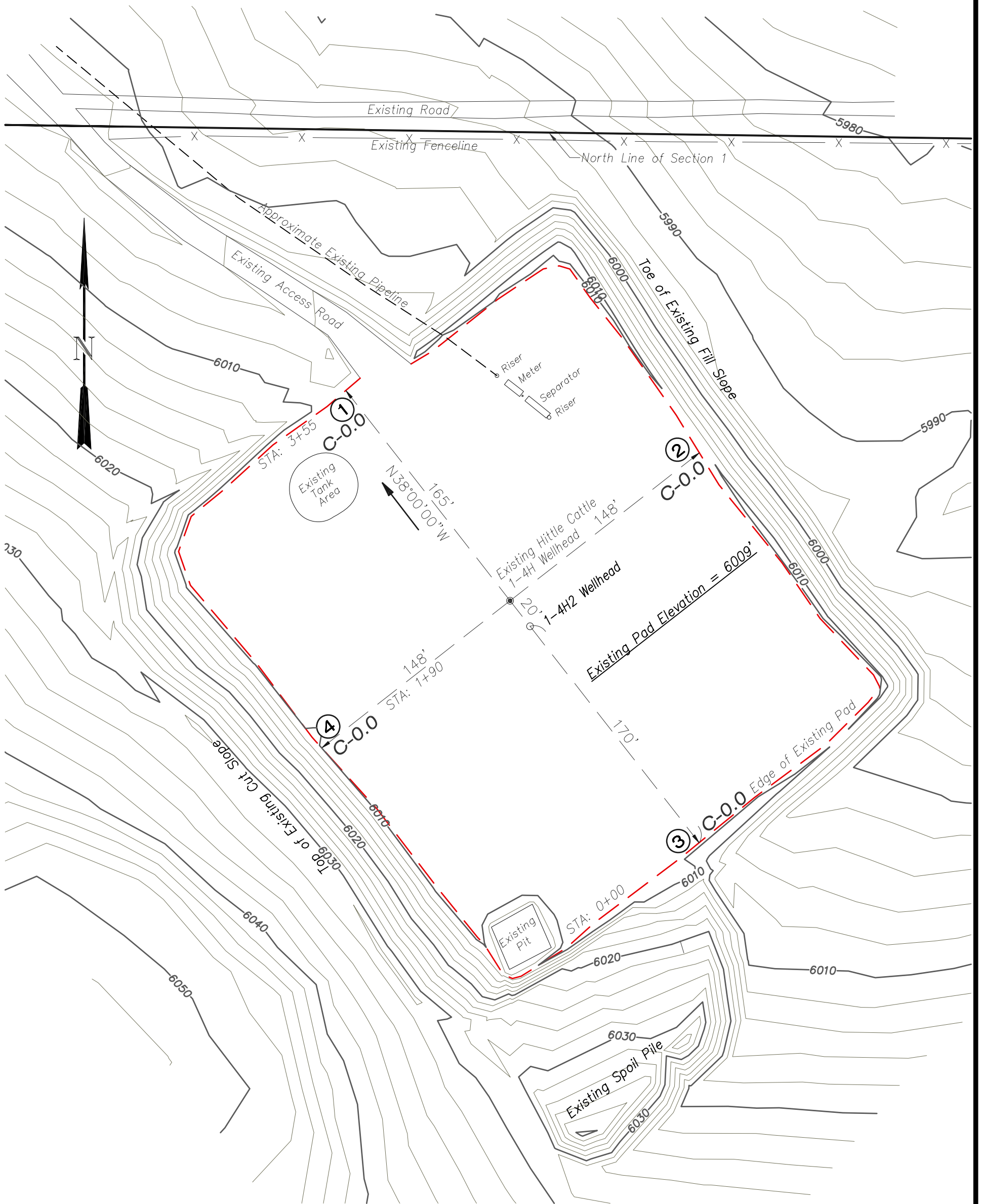


906 Main Street
 Evanston, Wyoming 82930
 Phone No. (307) 789-4545

Interference Plat		Scale: 1" = 70'	SHEET 2 OF 10
Project No.	09-04-06	Date Surveyed: 2/09/09	
Date Drawn:	5/11/09	Latest Revision Date:	

EnCana Oil & Gas (USA) Inc.
PL1NW Well Pad

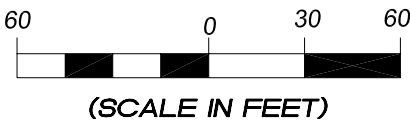
NW1/4 NW1/4, SECTION 1, T 10 S, R 96 W, 6th P.M.
WELL PAD LAYOUT



NOTE:
THIS IS AN EXISTING PAD, THERE IS
NO NEW CONSTRUCTION PLANNED.



906 Main Street
Evanston, Wyoming 82930
Phone No. (307) 789-4545

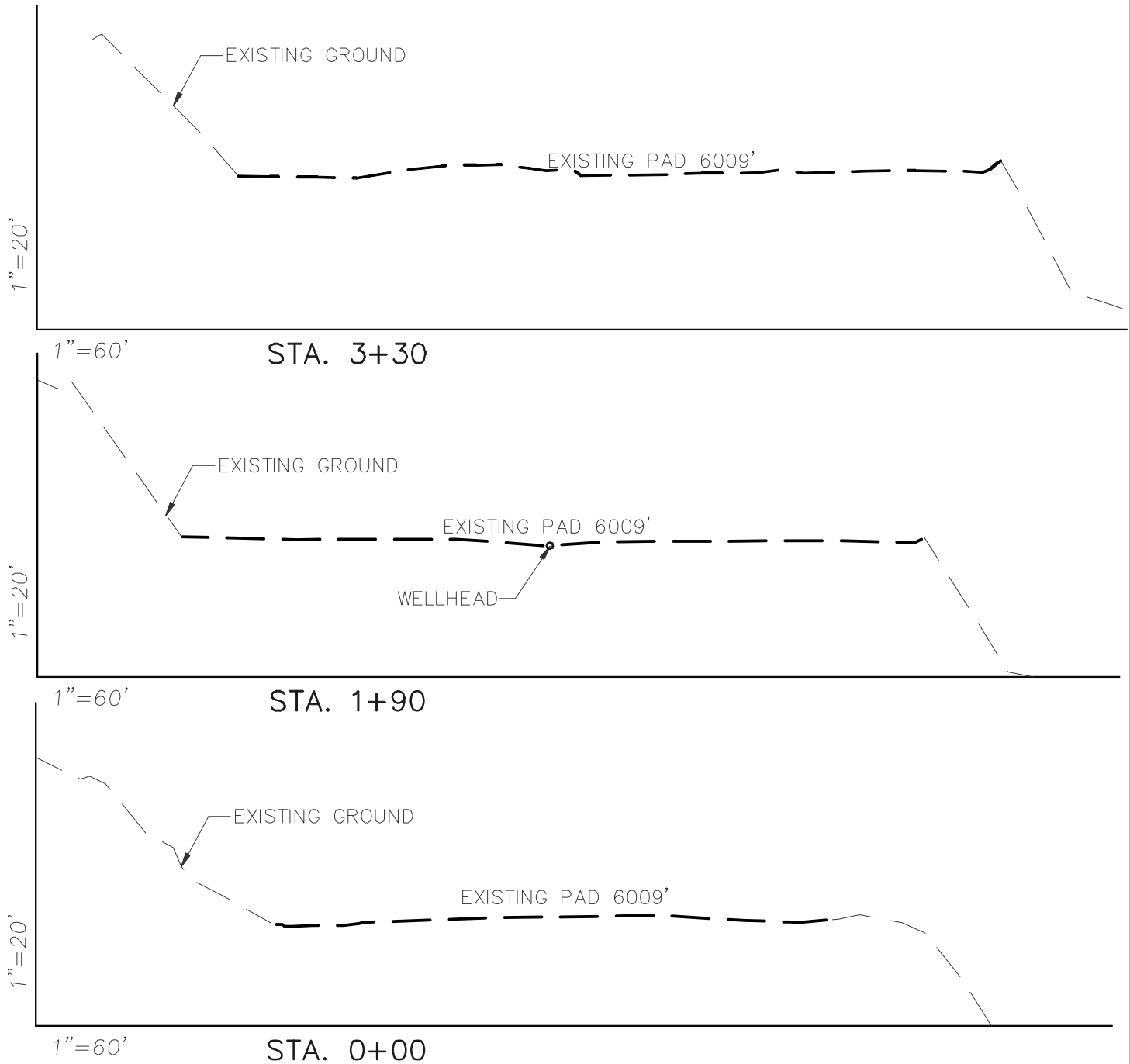


Well Pad Layout		Scale: 1" = 60'	SHEET 3 OF 10
Project No.	09-04-06	Date Surveyed: 2/09/09	
Date Drawn:	5/11/09	Latest Revision Date:	

EnCana Oil & Gas (USA) Inc.

PL1NW Well Pad

CROSS SECTIONS



NOTE:

THIS IS AN EXISTING PAD, THERE IS
NO NEW CONSTRUCTION PLANNED.

EARTHWORK QUANTITIES

(in Cubic Yards w/ 0% shrink/swell)

ITEM	CUT	FILL	6" TOPSOIL	EXCESS
PAD	0	0	Topsoil not included in Excavation	0
PIT	0	0		0
TOTALS	0	0	0	0



906 Main Street
Evanston, Wyoming 82930
Phone No. (307) 789-4545

Cross Sections

Project
No. 09-04-06
Date
Drawn: 5/11/09

Scale: As Shown

Date
Surveyed: 2/09/09
Latest Revision
Date:

SHEET

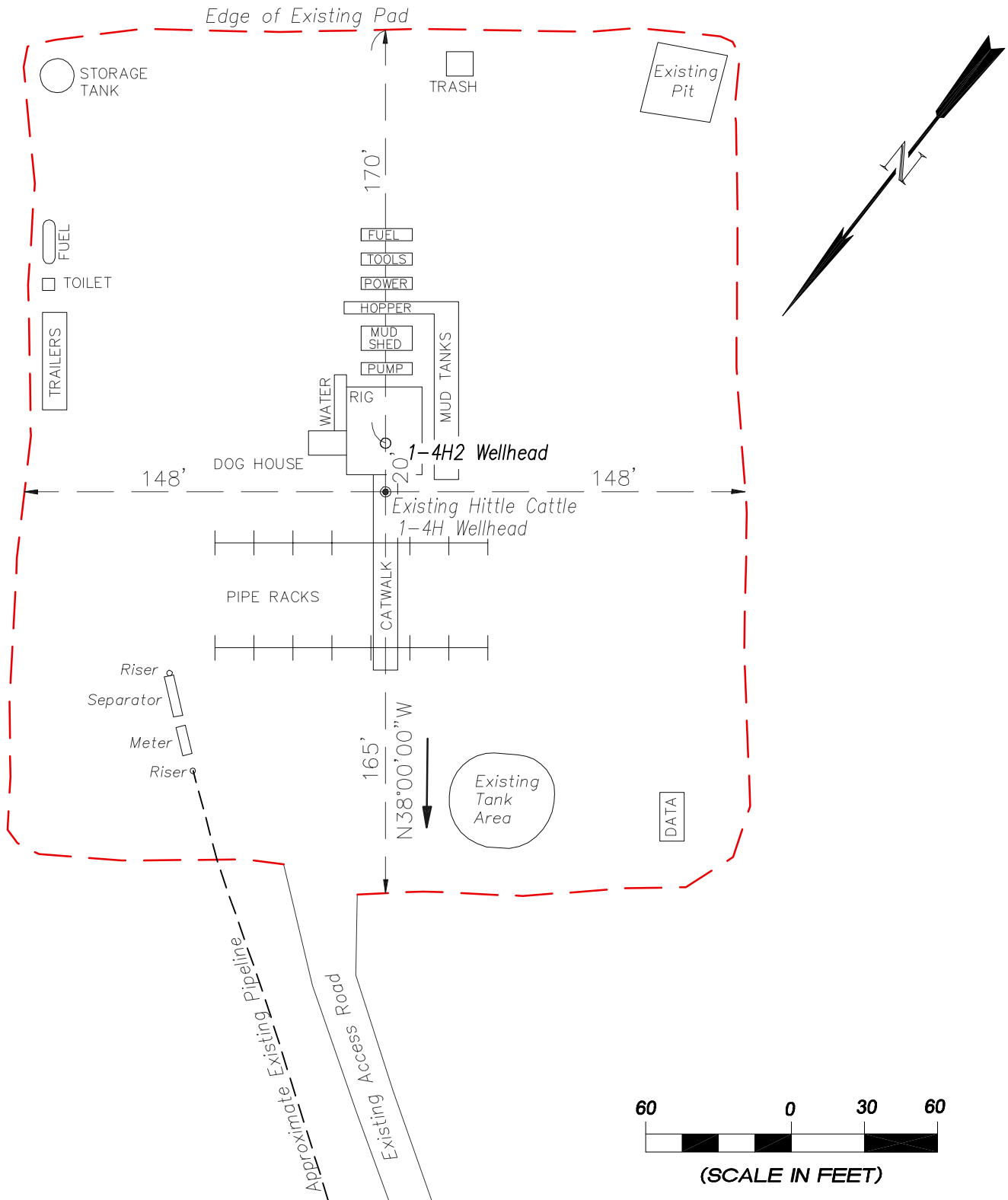
4

OF 10

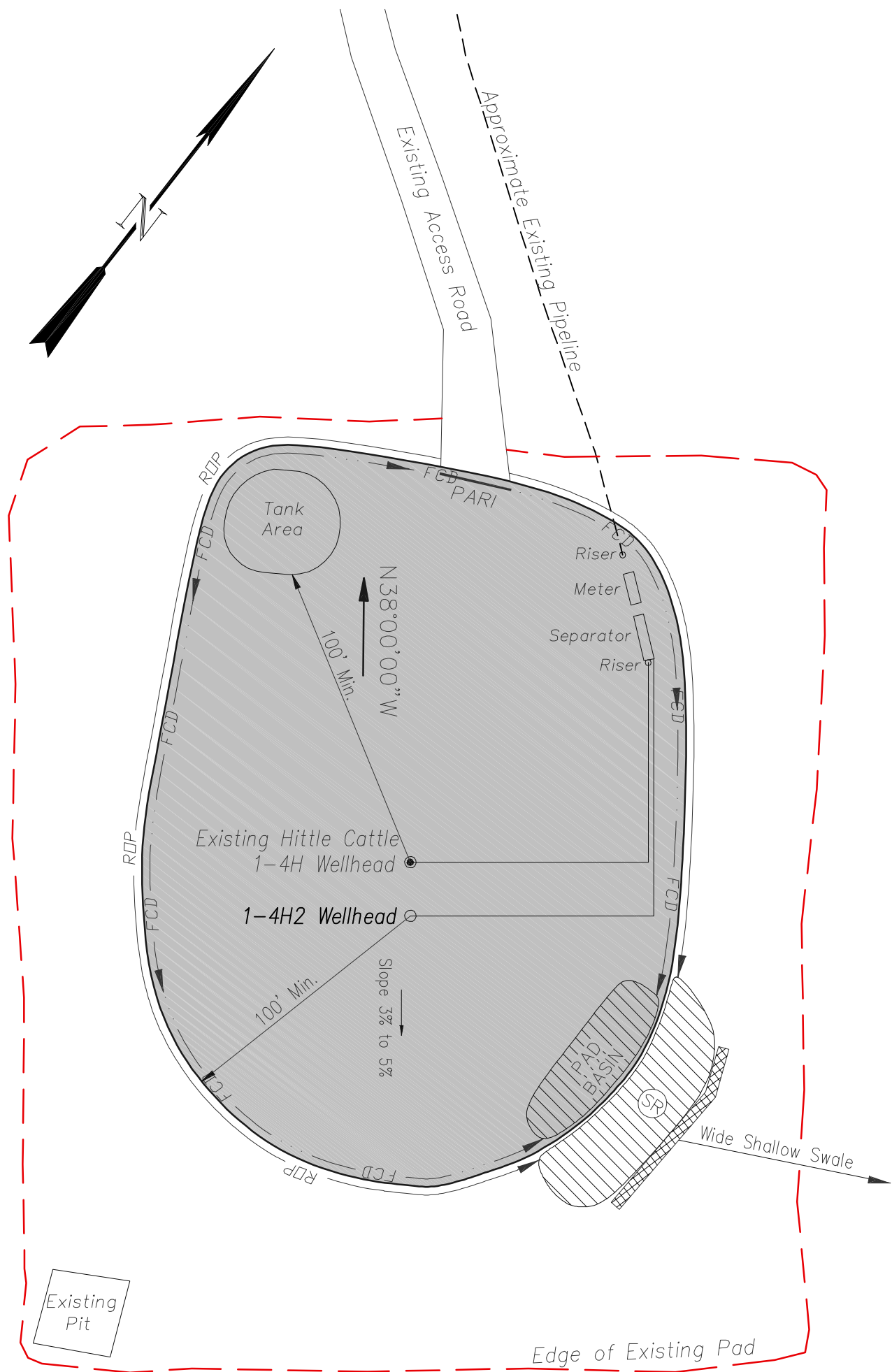
EnCana Oil & Gas (USA) Inc.

PL1NW Well Pad

TYPICAL RIG LAYOUT



EnCana Oil & Gas (USA) Inc.
PL1NW Well Pad
PRODUCTION SCHEMATIC



NOTES:

1. Set Tanks High so pad Entrance & Tank Area Can Drain to Pad Basin
2. Gravel Pad 75' from Wells & Around Tanks and Separators
3. Pad Drains to Pad Basin at a 3% to 5% slope
4. BMP Selection and Position may change Depending on Actual Conditions Encountered During the Construction Process

NOTE:

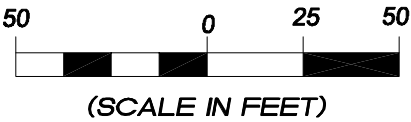
Actual Equipment Layout and Reclaimed Pad Surface Area May Change due to Production Requirements or Site Conditions.

ESTIMATED AREAS
RECLAIMED AREA: 2.93 ACRES
UNRECLAIMED AREA: 1.1 ACRES

- LEGEND
- PARI = PAD/ACCESS ROAD INTERFACE
 - SR = SEDIMENT RESERVOIR
 - ST = SEDIMENT TRAP
 - R.O.P. = RUN-ON PROTECTION
 - = PERIMETER CONTROL (WATTLES)
 - CSD = CUT SLOPE DIVERSION (BERM TOE OF CUT SLOPE)
 - D = FILL DIVERSION TO SEDIMENT TRAP
 - VGB = VEGETATION BUFFER (UNDISTURBED LAND INSIDE PC)
 - CDM = CHECK DAM
 - FCD = FLOW CONTROL DITCH
 - S = SLASH
 - ▨ = LEVEL SPREADER
 - = TOE BERM (PLACED AT TOE OF ALL FILL SLOPES/STOCKPILES)



906 Main Street
Evanston, Wyoming 82930
Phone No. (307) 789-4545



Production Schematic		Scale: 1" = 50'	SHEET 6 OF 10
Project No.	09-04-06	Date Surveyed: 2/09/09	
Date Drawn: 5/11/09		Latest Revision Date:	