

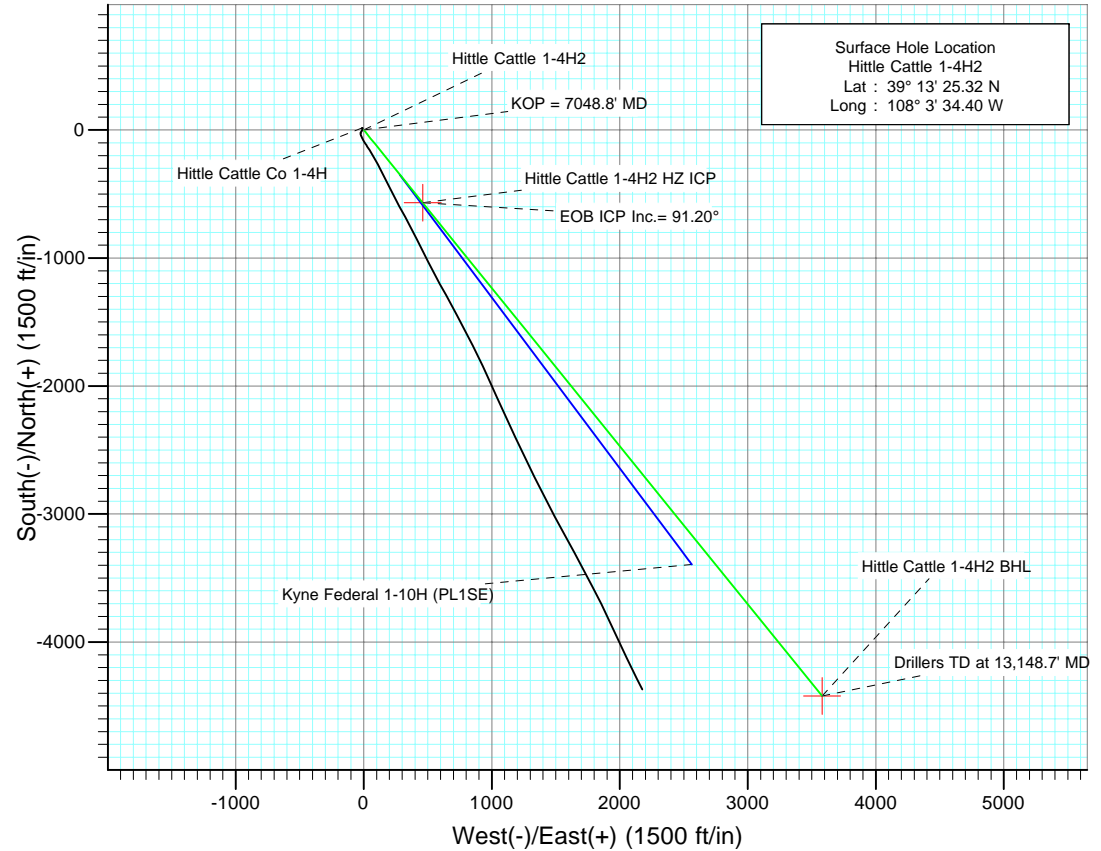
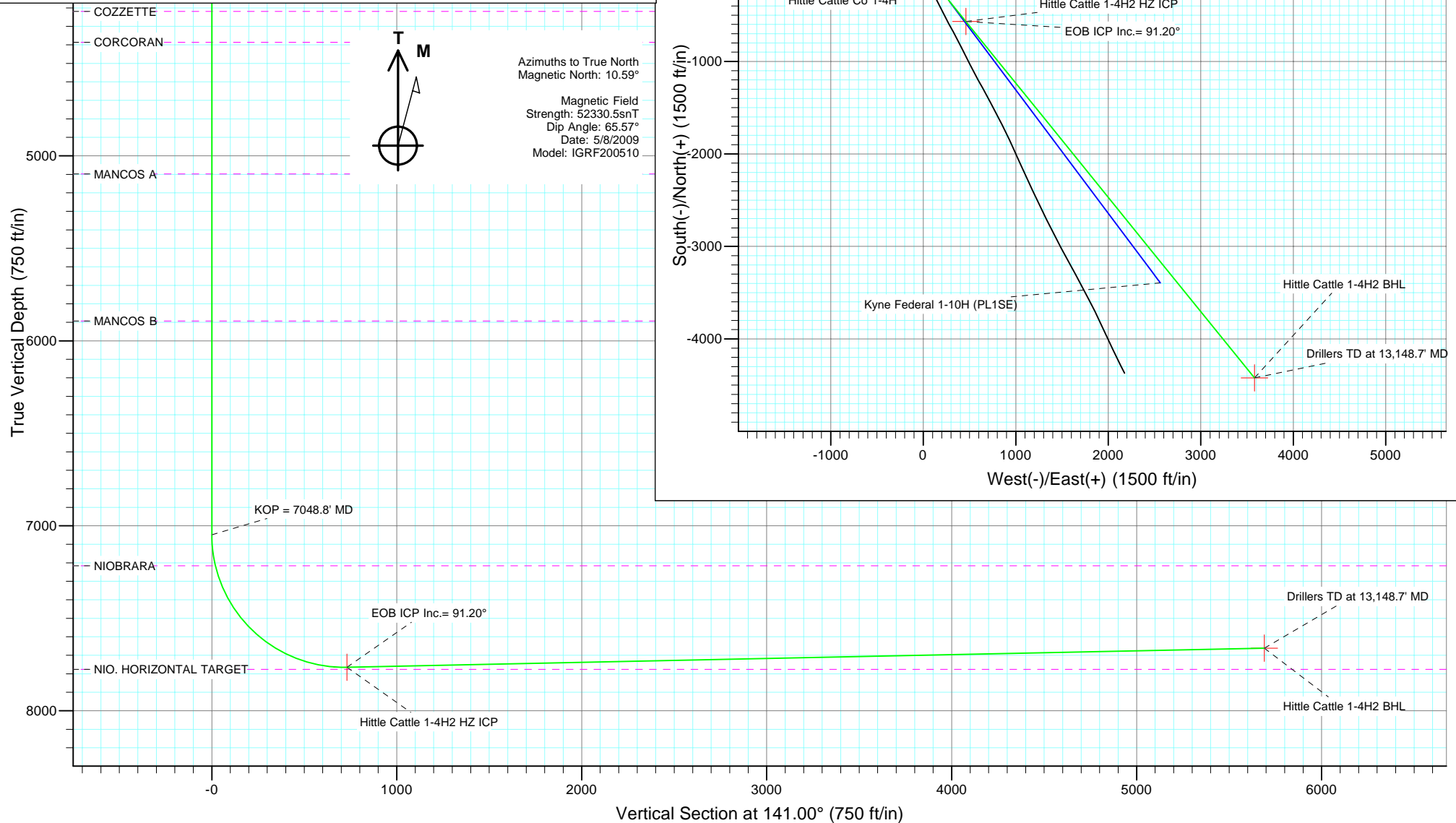


Project: Plateau
 Site: Hittle Cattle 1-4H2 (PL1NW Pad)
 Well: Hittle Cattle 1-4H2
 Wellbore: HZ
 Design: Plan #2



SECTION DETAILS

Sec	MD	Inc	Azi	TVD	+N/-S	+E/-W	DLeg	TFace	VSec	Target
1	0.0	0.00	0.00	0.0	0.0	0.0	0.00	0.00	0.0	
2	7048.8	0.00	0.00	7048.8	0.0	0.0	0.00	0.00	0.0	
3	8188.8	91.20	141.00	7764.9	-568.2	460.2	8.00	141.00	731.2	Hittle Cattle 1-4H2 HZ ICP
4	13148.7	91.20	141.00	7661.0	-4422.0	3580.8	0.00	0.00	5690.0	Hittle Cattle 1-4H2 BHL



Planning Report

Database:	US EDM 2003.21 Multi User Db	Local Co-ordinate Reference:	Well Hittle Cattle 1-4H2
Company:	EnCana Oil & Gas (USA) Inc	TVD Reference:	KBE @ 6030.0ft (Original Well Elev)
Project:	Plateau	MD Reference:	KBE @ 6030.0ft (Original Well Elev)
Site:	Hittle Cattle 1-4H2 (PL1NW Pad)	North Reference:	True
Well:	Hittle Cattle 1-4H2	Survey Calculation Method:	Minimum Curvature
Wellbore:	HZ		
Design:	Plan #2		

Project	Plateau		
Map System:	US State Plane 1983	System Datum:	Mean Sea Level
Geo Datum:	North American Datum 1983		
Map Zone:	Colorado Central Zone		

Site	Hittle Cattle 1-4H2 (PL1NW Pad)			
Site Position:		Northing:	1,516,584.66 ft	Latitude: 39° 13' 25.32 N
From:	Lat/Long	Easting:	2,274,998.52 ft	Longitude: 108° 3' 34.40 W
Position Uncertainty:	0.0 ft	Slot Radius:	in	Grid Convergence: -1.61 °

Well	Hittle Cattle 1-4H2			
Well Position	+N/-S	0.0 ft	Northing:	1,516,584.66 ft
	+E/-W	0.0 ft	Easting:	2,274,998.52 ft
Position Uncertainty		0.0 ft	Wellhead Elevation:	ft
			Ground Level:	6,008.0 ft

Wellbore	HZ				
Magnetics	Model Name	Sample Date	Declination (°)	Dip Angle (°)	Field Strength (nT)
	IGRF200510	5/8/2009	10.59	65.57	52,330

Design	Plan #2			
Audit Notes:				
Version:	Phase:	PLAN	Tie On Depth:	0.0
Vertical Section:	Depth From (TVD) (ft)	+N/-S (ft)	+E/-W (ft)	Direction (°)
	0.0	0.0	0.0	141.00

Plan Sections										
Measured Depth (ft)	Inclination (°)	Azimuth (°)	Vertical Depth (ft)	+N/-S (ft)	+E/-W (ft)	Dogleg Rate (°/100ft)	Build Rate (°/100ft)	Turn Rate (°/100ft)	TFO (°)	Target
0.0	0.00	0.00	0.0	0.0	0.0	0.00	0.00	0.00	0.00	
7,048.8	0.00	0.00	7,048.8	0.0	0.0	0.00	0.00	0.00	0.00	
8,188.8	91.20	141.00	7,764.9	-568.2	460.2	8.00	8.00	12.37	141.00	Hittle Cattle 1-4H2 HZ
13,148.7	91.20	141.00	7,661.0	-4,422.0	3,580.8	0.00	0.00	0.00	0.00	Hittle Cattle 1-4H2 BH

Planning Report

Database:	US EDM 2003.21 Multi User Db	Local Co-ordinate Reference:	Well Hittle Cattle 1-4H2
Company:	EnCana Oil & Gas (USA) Inc	TVD Reference:	KBE @ 6030.0ft (Original Well Elev)
Project:	Plateau	MD Reference:	KBE @ 6030.0ft (Original Well Elev)
Site:	Hittle Cattle 1-4H2 (PL1NW Pad)	North Reference:	True
Well:	Hittle Cattle 1-4H2	Survey Calculation Method:	Minimum Curvature
Wellbore:	HZ		
Design:	Plan #2		

Planned Survey									
Measured Depth (ft)	Inclination (°)	Azimuth (°)	Vertical Depth (ft)	+N/-S (ft)	+E/-W (ft)	Vertical Section (ft)	Dogleg Rate (°/100ft)	Build Rate (°/100ft)	Comments / Formations
0.0	0.00	0.00	0.0	0.0	0.0	0.0	0.00	0.00	
100.0	0.00	0.00	100.0	0.0	0.0	0.0	0.00	0.00	
200.0	0.00	0.00	200.0	0.0	0.0	0.0	0.00	0.00	
300.0	0.00	0.00	300.0	0.0	0.0	0.0	0.00	0.00	
400.0	0.00	0.00	400.0	0.0	0.0	0.0	0.00	0.00	
500.0	0.00	0.00	500.0	0.0	0.0	0.0	0.00	0.00	
600.0	0.00	0.00	600.0	0.0	0.0	0.0	0.00	0.00	
700.0	0.00	0.00	700.0	0.0	0.0	0.0	0.00	0.00	
800.0	0.00	0.00	800.0	0.0	0.0	0.0	0.00	0.00	
900.0	0.00	0.00	900.0	0.0	0.0	0.0	0.00	0.00	
1,000.0	0.00	0.00	1,000.0	0.0	0.0	0.0	0.00	0.00	
1,100.0	0.00	0.00	1,100.0	0.0	0.0	0.0	0.00	0.00	
1,200.0	0.00	0.00	1,200.0	0.0	0.0	0.0	0.00	0.00	
1,201.0	0.00	0.00	1,201.0	0.0	0.0	0.0	0.00	0.00	OHIO CREEK (Top Kmv)
1,300.0	0.00	0.00	1,300.0	0.0	0.0	0.0	0.00	0.00	
1,400.0	0.00	0.00	1,400.0	0.0	0.0	0.0	0.00	0.00	
1,500.0	0.00	0.00	1,500.0	0.0	0.0	0.0	0.00	0.00	
1,516.0	0.00	0.00	1,516.0	0.0	0.0	0.0	0.00	0.00	WILLIAMS FORK FM
1,600.0	0.00	0.00	1,600.0	0.0	0.0	0.0	0.00	0.00	
1,700.0	0.00	0.00	1,700.0	0.0	0.0	0.0	0.00	0.00	
1,800.0	0.00	0.00	1,800.0	0.0	0.0	0.0	0.00	0.00	
1,900.0	0.00	0.00	1,900.0	0.0	0.0	0.0	0.00	0.00	
2,000.0	0.00	0.00	2,000.0	0.0	0.0	0.0	0.00	0.00	
2,100.0	0.00	0.00	2,100.0	0.0	0.0	0.0	0.00	0.00	
2,200.0	0.00	0.00	2,200.0	0.0	0.0	0.0	0.00	0.00	
2,300.0	0.00	0.00	2,300.0	0.0	0.0	0.0	0.00	0.00	
2,400.0	0.00	0.00	2,400.0	0.0	0.0	0.0	0.00	0.00	
2,500.0	0.00	0.00	2,500.0	0.0	0.0	0.0	0.00	0.00	
2,600.0	0.00	0.00	2,600.0	0.0	0.0	0.0	0.00	0.00	
2,700.0	0.00	0.00	2,700.0	0.0	0.0	0.0	0.00	0.00	
2,800.0	0.00	0.00	2,800.0	0.0	0.0	0.0	0.00	0.00	
2,900.0	0.00	0.00	2,900.0	0.0	0.0	0.0	0.00	0.00	
3,000.0	0.00	0.00	3,000.0	0.0	0.0	0.0	0.00	0.00	
3,031.0	0.00	0.00	3,031.0	0.0	0.0	0.0	0.00	0.00	TOP GAS
3,100.0	0.00	0.00	3,100.0	0.0	0.0	0.0	0.00	0.00	
3,200.0	0.00	0.00	3,200.0	0.0	0.0	0.0	0.00	0.00	
3,300.0	0.00	0.00	3,300.0	0.0	0.0	0.0	0.00	0.00	
3,400.0	0.00	0.00	3,400.0	0.0	0.0	0.0	0.00	0.00	
3,500.0	0.00	0.00	3,500.0	0.0	0.0	0.0	0.00	0.00	
3,600.0	0.00	0.00	3,600.0	0.0	0.0	0.0	0.00	0.00	
3,645.0	0.00	0.00	3,645.0	0.0	0.0	0.0	0.00	0.00	Coal Ridge (Paludal)
3,700.0	0.00	0.00	3,700.0	0.0	0.0	0.0	0.00	0.00	
3,800.0	0.00	0.00	3,800.0	0.0	0.0	0.0	0.00	0.00	
3,900.0	0.00	0.00	3,900.0	0.0	0.0	0.0	0.00	0.00	
3,924.0	0.00	0.00	3,924.0	0.0	0.0	0.0	0.00	0.00	ROLLINS SS (Iles Fm)
4,000.0	0.00	0.00	4,000.0	0.0	0.0	0.0	0.00	0.00	
4,100.0	0.00	0.00	4,100.0	0.0	0.0	0.0	0.00	0.00	
4,200.0	0.00	0.00	4,200.0	0.0	0.0	0.0	0.00	0.00	
4,219.0	0.00	0.00	4,219.0	0.0	0.0	0.0	0.00	0.00	COZZETTE
4,300.0	0.00	0.00	4,300.0	0.0	0.0	0.0	0.00	0.00	
4,386.0	0.00	0.00	4,386.0	0.0	0.0	0.0	0.00	0.00	CORCORAN
4,400.0	0.00	0.00	4,400.0	0.0	0.0	0.0	0.00	0.00	

Planning Report

Database:	US EDM 2003.21 Multi User Db	Local Co-ordinate Reference:	Well Hittle Cattle 1-4H2
Company:	EnCana Oil & Gas (USA) Inc	TVD Reference:	KBE @ 6030.0ft (Original Well Elev)
Project:	Plateau	MD Reference:	KBE @ 6030.0ft (Original Well Elev)
Site:	Hittle Cattle 1-4H2 (PL1NW Pad)	North Reference:	True
Well:	Hittle Cattle 1-4H2	Survey Calculation Method:	Minimum Curvature
Wellbore:	HZ		
Design:	Plan #2		

Planned Survey									
Measured Depth (ft)	Inclination (°)	Azimuth (°)	Vertical Depth (ft)	+N/-S (ft)	+E/-W (ft)	Vertical Section (ft)	Dogleg Rate (°/100ft)	Build Rate (°/100ft)	Comments / Formations
4,500.0	0.00	0.00	4,500.0	0.0	0.0	0.0	0.00	0.00	
4,600.0	0.00	0.00	4,600.0	0.0	0.0	0.0	0.00	0.00	
4,700.0	0.00	0.00	4,700.0	0.0	0.0	0.0	0.00	0.00	
4,800.0	0.00	0.00	4,800.0	0.0	0.0	0.0	0.00	0.00	
4,900.0	0.00	0.00	4,900.0	0.0	0.0	0.0	0.00	0.00	
5,000.0	0.00	0.00	5,000.0	0.0	0.0	0.0	0.00	0.00	
5,098.0	0.00	0.00	5,098.0	0.0	0.0	0.0	0.00	0.00	MANCOS A
5,100.0	0.00	0.00	5,100.0	0.0	0.0	0.0	0.00	0.00	
5,200.0	0.00	0.00	5,200.0	0.0	0.0	0.0	0.00	0.00	
5,300.0	0.00	0.00	5,300.0	0.0	0.0	0.0	0.00	0.00	
5,400.0	0.00	0.00	5,400.0	0.0	0.0	0.0	0.00	0.00	
5,500.0	0.00	0.00	5,500.0	0.0	0.0	0.0	0.00	0.00	
5,600.0	0.00	0.00	5,600.0	0.0	0.0	0.0	0.00	0.00	
5,700.0	0.00	0.00	5,700.0	0.0	0.0	0.0	0.00	0.00	
5,800.0	0.00	0.00	5,800.0	0.0	0.0	0.0	0.00	0.00	
5,893.0	0.00	0.00	5,893.0	0.0	0.0	0.0	0.00	0.00	MANCOS B
5,900.0	0.00	0.00	5,900.0	0.0	0.0	0.0	0.00	0.00	
6,000.0	0.00	0.00	6,000.0	0.0	0.0	0.0	0.00	0.00	
6,100.0	0.00	0.00	6,100.0	0.0	0.0	0.0	0.00	0.00	
6,200.0	0.00	0.00	6,200.0	0.0	0.0	0.0	0.00	0.00	
6,300.0	0.00	0.00	6,300.0	0.0	0.0	0.0	0.00	0.00	
6,400.0	0.00	0.00	6,400.0	0.0	0.0	0.0	0.00	0.00	
6,500.0	0.00	0.00	6,500.0	0.0	0.0	0.0	0.00	0.00	
6,600.0	0.00	0.00	6,600.0	0.0	0.0	0.0	0.00	0.00	
6,700.0	0.00	0.00	6,700.0	0.0	0.0	0.0	0.00	0.00	
6,800.0	0.00	0.00	6,800.0	0.0	0.0	0.0	0.00	0.00	
6,900.0	0.00	0.00	6,900.0	0.0	0.0	0.0	0.00	0.00	
7,000.0	0.00	0.00	7,000.0	0.0	0.0	0.0	0.00	0.00	
7,048.8	0.00	0.00	7,048.8	0.0	0.0	0.0	0.00	0.00	KOP = 7048.8' MD
7,100.0	4.09	141.00	7,100.0	-1.4	1.1	1.8	8.00	8.00	
7,200.0	12.09	141.00	7,198.9	-12.4	10.0	15.9	8.00	8.00	
7,217.6	13.50	141.00	7,216.0	-15.4	12.4	19.8	8.00	8.00	NIOBRARA
7,300.0	20.09	141.00	7,294.9	-33.9	27.4	43.6	8.00	8.00	
7,400.0	28.09	141.00	7,386.1	-65.6	53.1	84.4	8.00	8.00	
7,500.0	36.09	141.00	7,470.7	-106.8	86.5	137.5	8.00	8.00	
7,600.0	44.09	141.00	7,547.2	-156.8	127.0	201.8	8.00	8.00	
7,700.0	52.09	141.00	7,613.9	-214.6	173.8	276.2	8.00	8.00	
7,800.0	60.09	141.00	7,669.7	-279.1	226.0	359.1	8.00	8.00	
7,900.0	68.09	141.00	7,713.3	-348.9	282.6	449.0	8.00	8.00	
8,000.0	76.09	141.00	7,744.0	-422.8	342.4	544.1	8.00	8.00	
8,100.0	84.09	141.00	7,761.2	-499.3	404.3	642.5	8.00	8.00	
8,188.8	91.20	141.00	7,764.9	-568.2	460.2	731.2	8.00	8.00	EOB ICP Inc.= 91.20° - Hittle Cattle 1-4H2 HZ I
8,200.0	91.20	141.00	7,764.6	-576.9	467.2	742.4	0.00	0.00	
8,300.0	91.20	141.00	7,762.5	-654.6	530.1	842.3	0.00	0.00	
8,400.0	91.20	141.00	7,760.4	-732.3	593.0	942.3	0.00	0.00	
8,500.0	91.20	141.00	7,758.4	-810.0	655.9	1,042.3	0.00	0.00	
8,600.0	91.20	141.00	7,756.3	-887.7	718.9	1,142.3	0.00	0.00	
8,700.0	91.20	141.00	7,754.2	-965.4	781.8	1,242.3	0.00	0.00	
8,800.0	91.20	141.00	7,752.1	-1,043.1	844.7	1,342.2	0.00	0.00	
8,900.0	91.20	141.00	7,750.0	-1,120.8	907.6	1,442.2	0.00	0.00	
9,000.0	91.20	141.00	7,747.9	-1,198.5	970.5	1,542.2	0.00	0.00	
9,100.0	91.20	141.00	7,745.8	-1,276.2	1,033.4	1,642.2	0.00	0.00	

Planning Report

Database:	US EDM 2003.21 Multi User Db	Local Co-ordinate Reference:	Well Hittle Cattle 1-4H2
Company:	EnCana Oil & Gas (USA) Inc	TVD Reference:	KBE @ 6030.0ft (Original Well Elev)
Project:	Plateau	MD Reference:	KBE @ 6030.0ft (Original Well Elev)
Site:	Hittle Cattle 1-4H2 (PL1NW Pad)	North Reference:	True
Well:	Hittle Cattle 1-4H2	Survey Calculation Method:	Minimum Curvature
Wellbore:	HZ		
Design:	Plan #2		

Planned Survey									
Measured Depth (ft)	Inclination (°)	Azimuth (°)	Vertical Depth (ft)	+N/-S (ft)	+E/-W (ft)	Vertical Section (ft)	Dogleg Rate (°/100ft)	Build Rate (°/100ft)	Comments / Formations
9,200.0	91.20	141.00	7,743.7	-1,353.9	1,096.4	1,742.1	0.00	0.00	
9,300.0	91.20	141.00	7,741.6	-1,431.6	1,159.3	1,842.1	0.00	0.00	
9,400.0	91.20	141.00	7,739.5	-1,509.3	1,222.2	1,942.1	0.00	0.00	
9,500.0	91.20	141.00	7,737.4	-1,587.0	1,285.1	2,042.1	0.00	0.00	
9,600.0	91.20	141.00	7,735.3	-1,664.7	1,348.0	2,142.1	0.00	0.00	
9,700.0	91.20	141.00	7,733.2	-1,742.4	1,411.0	2,242.0	0.00	0.00	
9,800.0	91.20	141.00	7,731.1	-1,820.1	1,473.9	2,342.0	0.00	0.00	
9,900.0	91.20	141.00	7,729.0	-1,897.8	1,536.8	2,442.0	0.00	0.00	
10,000.0	91.20	141.00	7,726.9	-1,975.5	1,599.7	2,542.0	0.00	0.00	
10,100.0	91.20	141.00	7,724.8	-2,053.2	1,662.6	2,641.9	0.00	0.00	
10,200.0	91.20	141.00	7,722.8	-2,130.9	1,725.5	2,741.9	0.00	0.00	
10,300.0	91.20	141.00	7,720.7	-2,208.6	1,788.5	2,841.9	0.00	0.00	
10,400.0	91.20	141.00	7,718.6	-2,286.3	1,851.4	2,941.9	0.00	0.00	
10,500.0	91.20	141.00	7,716.5	-2,364.0	1,914.3	3,041.9	0.00	0.00	
10,600.0	91.20	141.00	7,714.4	-2,441.7	1,977.2	3,141.8	0.00	0.00	
10,700.0	91.20	141.00	7,712.3	-2,519.4	2,040.1	3,241.8	0.00	0.00	
10,800.0	91.20	141.00	7,710.2	-2,597.1	2,103.1	3,341.8	0.00	0.00	
10,900.0	91.20	141.00	7,708.1	-2,674.8	2,166.0	3,441.8	0.00	0.00	
11,000.0	91.20	141.00	7,706.0	-2,752.5	2,228.9	3,541.7	0.00	0.00	
11,100.0	91.20	141.00	7,703.9	-2,830.2	2,291.8	3,641.7	0.00	0.00	
11,200.0	91.20	141.00	7,701.8	-2,907.8	2,354.7	3,741.7	0.00	0.00	
11,300.0	91.20	141.00	7,699.7	-2,985.5	2,417.6	3,841.7	0.00	0.00	
11,400.0	91.20	141.00	7,697.6	-3,063.2	2,480.6	3,941.7	0.00	0.00	
11,500.0	91.20	141.00	7,695.5	-3,140.9	2,543.5	4,041.6	0.00	0.00	
11,600.0	91.20	141.00	7,693.4	-3,218.6	2,606.4	4,141.6	0.00	0.00	
11,700.0	91.20	141.00	7,691.3	-3,296.3	2,669.3	4,241.6	0.00	0.00	
11,800.0	91.20	141.00	7,689.2	-3,374.0	2,732.2	4,341.6	0.00	0.00	
11,900.0	91.20	141.00	7,687.2	-3,451.7	2,795.2	4,441.6	0.00	0.00	
12,000.0	91.20	141.00	7,685.1	-3,529.4	2,858.1	4,541.5	0.00	0.00	
12,100.0	91.20	141.00	7,683.0	-3,607.1	2,921.0	4,641.5	0.00	0.00	
12,200.0	91.20	141.00	7,680.9	-3,684.8	2,983.9	4,741.5	0.00	0.00	
12,300.0	91.20	141.00	7,678.8	-3,762.5	3,046.8	4,841.5	0.00	0.00	
12,400.0	91.20	141.00	7,676.7	-3,840.2	3,109.7	4,941.4	0.00	0.00	
12,500.0	91.20	141.00	7,674.6	-3,917.9	3,172.7	5,041.4	0.00	0.00	
12,600.0	91.20	141.00	7,672.5	-3,995.6	3,235.6	5,141.4	0.00	0.00	
12,700.0	91.20	141.00	7,670.4	-4,073.3	3,298.5	5,241.4	0.00	0.00	
12,800.0	91.20	141.00	7,668.3	-4,151.0	3,361.4	5,341.4	0.00	0.00	
12,900.0	91.20	141.00	7,666.2	-4,228.7	3,424.3	5,441.3	0.00	0.00	
13,000.0	91.20	141.00	7,664.1	-4,306.4	3,487.3	5,541.3	0.00	0.00	
13,100.0	91.20	141.00	7,662.0	-4,384.1	3,550.2	5,641.3	0.00	0.00	
13,148.7	91.20	141.00	7,661.0	-4,422.0	3,580.8	5,690.0	0.00	0.00	Drillers TD at 13,148.7' MD - Hittle Cattle 1-4H2

Planning Report

Database:	US EDM 2003.21 Multi User Db	Local Co-ordinate Reference:	Well Hittle Cattle 1-4H2
Company:	EnCana Oil & Gas (USA) Inc	TVD Reference:	KBE @ 6030.0ft (Original Well Elev)
Project:	Plateau	MD Reference:	KBE @ 6030.0ft (Original Well Elev)
Site:	Hittle Cattle 1-4H2 (PL1NW Pad)	North Reference:	True
Well:	Hittle Cattle 1-4H2	Survey Calculation Method:	Minimum Curvature
Wellbore:	HZ		
Design:	Plan #2		

Targets									
Target Name									
- hit/miss target	Dip Angle	Dip Dir.	TVD	+N/-S	+E/-W	Northing	Easting	Latitude	Longitude
- Shape	(°)	(°)	(ft)	(ft)	(ft)	(ft)	(ft)		
Hittle Cattle 1-4H2 HZ IC		0.00	7,764.9	-568.2	460.2	1,516,003.68	2,275,442.48	39° 13' 19.70 N	108° 3' 28.55 W
- plan hits target center									
- Point									
Hittle Cattle 1-4H2 BHL	0.00	0.00	7,661.0	-4,422.0	3,580.8	1,512,063.58	2,278,453.36	39° 12' 41.61 N	108° 2' 48.90 W
- plan hits target center									
- Point									

Formations						
Measured Depth	Vertical Depth	Name	Lithology	Dip	Dip Direction	
(ft)	(ft)			(°)	(°)	
1,201.0	1,201.0	OHIO CREEK (Top Kmv)				
1,516.0	1,516.0	WILLIAMS FORK FM				
3,031.0	3,031.0	TOP GAS				
3,645.0	3,645.0	Coal Ridge (Paludal)				
3,924.0	3,924.0	ROLLINS SS (Iles Fm)				
4,219.0	4,219.0	COZZETTE				
4,386.0	4,386.0	CORCORAN				
5,098.0	5,098.0	MANCOS A				
5,893.0	5,893.0	MANCOS B				
7,217.6	7,216.0	NIOBRARA				
	7,776.0	NIO. HORIZONTAL TARGET				

Plan Annotations				
Measured Depth	Vertical Depth	Local Coordinates		Comment
(ft)	(ft)	+N/-S (ft)	+E/-W (ft)	
7,048.8	7,048.8	0.0	0.0	KOP = 7048.8' MD
8,188.8	7,764.9	-568.2	460.2	EOB ICP Inc.= 91.20°
13,148.7	7,661.0	-4,422.0	3,580.8	Drillers TD at 13,148.7' MD