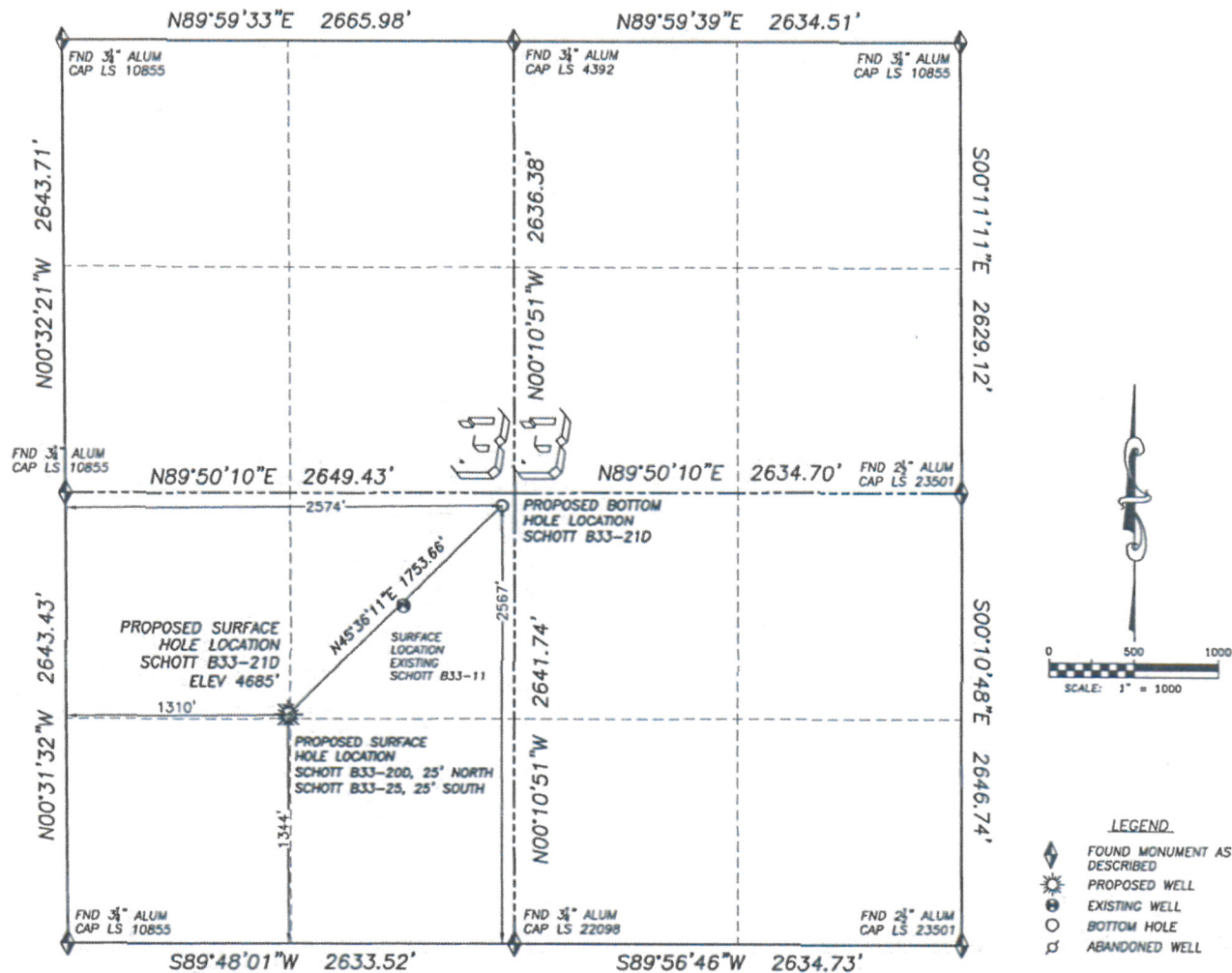


Zones: C/N  
Surf Csg: 500' 212 sxs  
TD/MD:7018/7357' 624 sxs

DALEY LAND SURVEYING, INC. PARKER, CO. 80134 303 953 9841

## WELL LOCATION CERTIFICATE SCHOTT B33-21D

SECTION 33, TOWNSHIP 5 NORTH, RANGE 64 WEST OF THE 6TH PRINCIPLE MERIDIAN



### NAD 83 LATITUDE AND LONGITUDE

#### SCHOTT B33-21D SURFACE HOLE:

LATITUDE: N40.35222'  
LONGITUDE: W104.55938'  
ELEVATION: 4685'  
PDOP 1.8

1344' FSL, 1310' FWL

#### BOTTOM HOLE:

LATITUDE: N40.35559'  
LONGITUDE: W104.55489'  
2567' FSL, 2574' FWL

#### NEAREST EXISTING WELL:

##### SCHOTT B33-11 SURFACE HOLE

LATITUDE: N40.35398'  
LONGITUDE: W104.55697'  
ELEVATION: 4683'  
928' NORTHEAST

QUARTER/QUARTER: NW/SW

#### NEAREST APPARENT PROPERTY LINE:

386'± SOUTHEAST (WELD CO. ASSESSOR AERIAL)

IN ACCORDANCE WITH A REQUEST FROM MATT CAMPBELL OF NOBLE ENERGY INC., DALEY LAND SURVEYING, INC. HAS DETERMINED THE SURFACE LOCATION OF THE SCHOTT B33-21D WELL TO BE 1344' FSL, 1310' FWL, AS MEASURED AT NINETY (90) DEGREES FROM THE SECTION LINES OF SECTION 33, TOWNSHIP 5 NORTH, RANGE 64 WEST OF THE 6TH PRINCIPLE MERIDIAN, WELD COUNTY COLORADO. THE BOTTOM HOLE LOCATION PROVIDED BY THE CLIENT IS TO BE 2567' FSL, AND 2574' FWL OF SECTION 33, TOWNSHIP 5 NORTH, RANGE 64 WEST.

I HEREBY CERTIFY THAT THIS WELL LOCATION CERTIFICATE WAS PREPARED BY ME OR UNDER MY DIRECT SUPERVISION, THAT THE WORK WAS COMPLETED ON 07/31/2009 FOR AND ON BEHALF OF NOBLE ENERGY, INC., AND THAT THIS MAP DOES NOT REPRESENT A BOUNDARY SURVEY. IT IS NOT A LAND SURVEY PLAT OR AN IMPROVEMENT SURVEY PLAT AND IT IS NOT TO BE RELIED UPON FOR THE ESTABLISHMENT OF FENCE, BUILDING OR OTHER FUTURE IMPROVEMENT LINES.

#### NOTES:

- 1) BASIS OF BEARINGS FOR THIS MAP ARE BASED UPON GPS OBSERVATIONS MADE BETWEEN MONUMENTS LOCATED AT THE SOUTHWEST AND SOUTH QUARTER CORNER OF SECTION 33, T.5N., R.64W., AND ALL BEARINGS SHOWN HEREON ARE RELATIVE THERETO.
- 2) HORIZONTAL DATUM IS NAD83.
- 3) VERTICAL DATUM IS NAVD88. ELEVATIONS ARE DERIVED FROM GPS-RTK OBSERVATIONS PROCESSED THROUGH OPUS, UTILIZING THE GEOID03 MODEL.
- 4) SEE VISIBLE IMPROVEMENTS EXHIBIT FOR ALL VISIBLE IMPROVEMENTS WITHIN 400' OF PROPOSED SURFACE HOLE LOCATION
- 5) SURFACE USE: IRRIGATED CORNFIELD

NOTICE: According to Colorado law you MUST commence any legal action based upon any defect in this W.L.C. within three years after you first discover such defect. In no event may any action based upon any such defect in this W.L.C. be commenced more than ten years from the date of the certification shown herein.



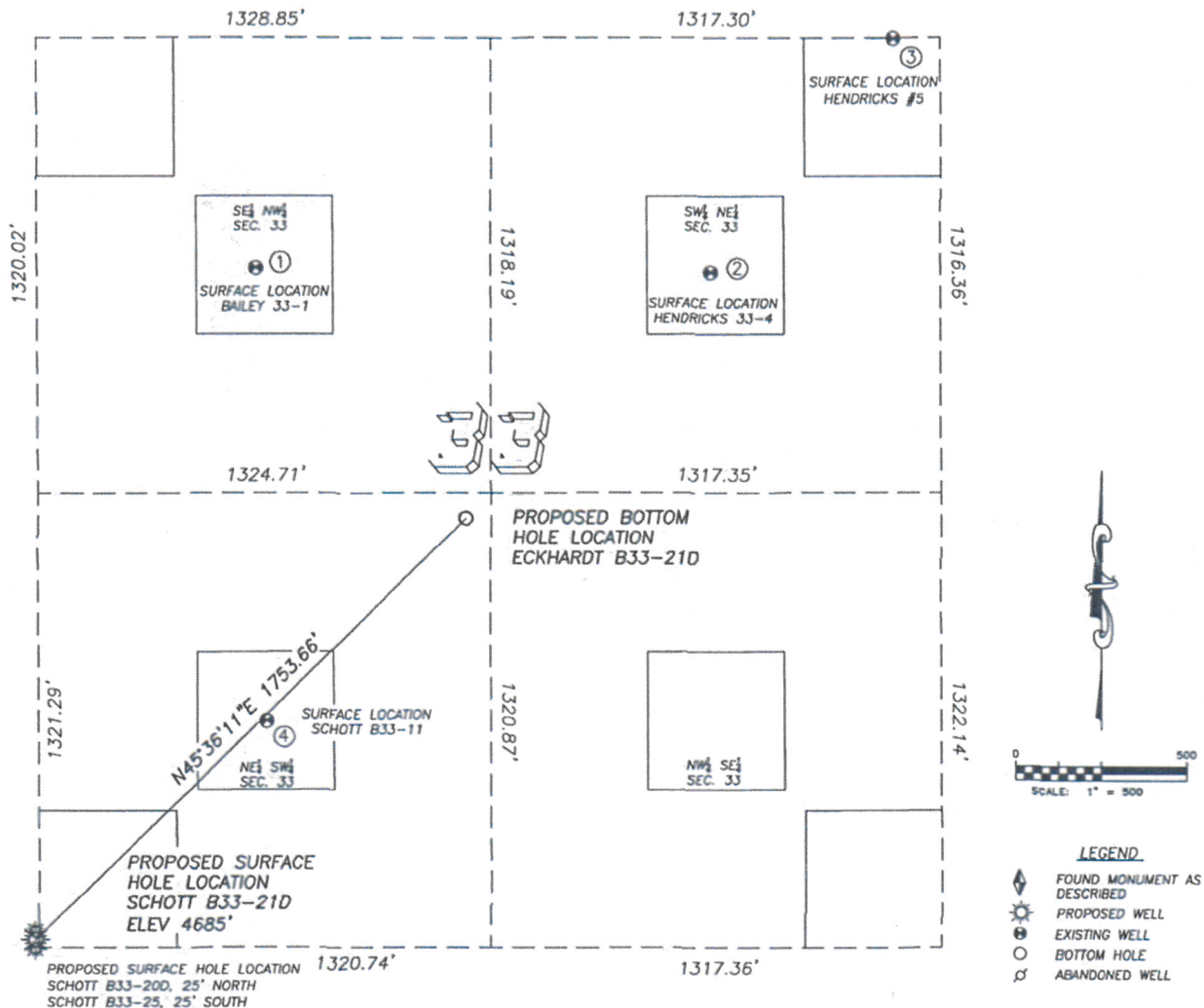
FOR AND ON BEHALF OF  
DALEY LAND SURVEYING, INC.,  
Robert Daley, PLS 35597

Zones: C/N  
 Surf Csg: 500' 212 sxs  
 TD/MD:7018'/7357' 624 sxs

DALEY LAND SURVEYING, INC. PARKER, CO. 80134 303 953 9841

# SITE SKETCH SCHOTT B33-21D

SECTION 33, TOWNSHIP 5 NORTH, RANGE 64 WEST OF THE 6TH PRINCIPLE MERIDIAN



① **BAILEY 33-1**  
 SE/NW SEC. 33  
 1988' FNL, 1966' FWL  
 950' NW OF PROPOSED  
 BOTTOM HOLE LOCATION  
 LAT. N40.35758°  
 LONG. W104.55709°  
 EL: 4690'  
 PDOP 2.6

② **HENDRICKS 33-4**  
 SW/NE SEC. 33  
 1998' FNL, 1990' FEL  
 1012' NE OF PROPOSED  
 BOTTOM HOLE LOCATION  
 LAT. N40.35755°  
 LONG. W104.55231°  
 EL: 4667'  
 PDOP 2.2

③ **HENDRICKS #5**  
 SW/NE SEC. 33  
 1320' FNL, 1456' FEL  
 1870' NE OF PROPOSED  
 BOTTOM HOLE LOCATION  
 LAT. N40.35941°  
 LONG. W104.55040°  
 EL: 4648'  
 PDOP 1.2

④ **SCHOTT B33-11**  
 NE/SW SEC. 33  
 1981' FSL, 1988' FWL  
 826' SW OF PROPOSED  
 BOTTOM HOLE LOCATION  
 LAT. N40.35398°  
 LONG. W104.55697°  
 EL: 4683'  
 PDOP 1.7

NOTES:  
 1) THIS DOES NOT REPRESENT A BOUNDARY SURVEY  
 2) THE LATITUDES AND LONGITUDES SHOWN ARE REFERENCED TO NAD83  
 3) DATUM FOR ELEVATION IS NAVD88. ELEVATIONS ARE DERIVED FROM GPS-RTK OBSERVATIONS PROCESSED THROUGH OPUS, UTILIZING THE GEOID03 MODEL.