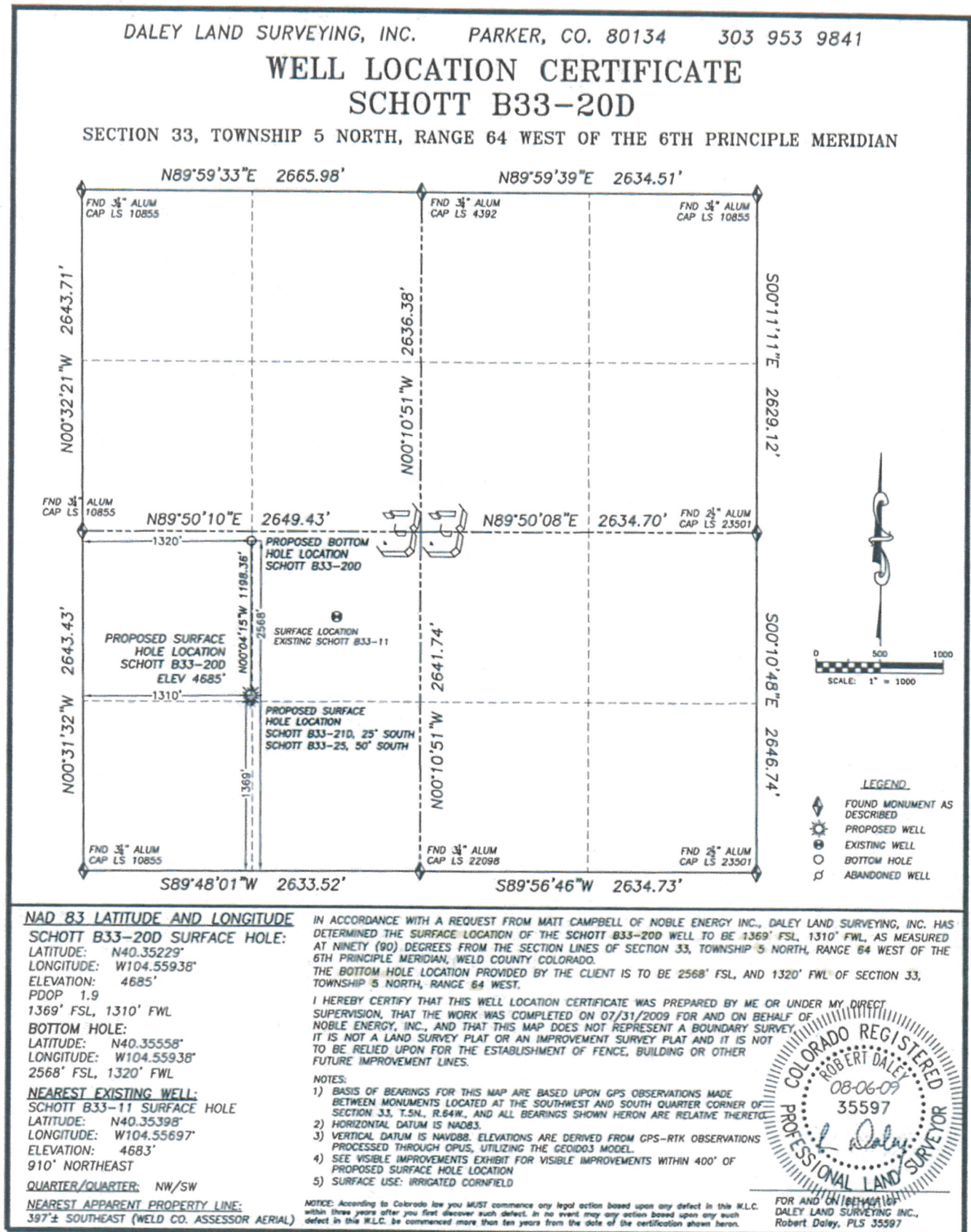


Zones: C/N
Surf Csg: 500 212 sxs
TD/MD: 7023/7189 624 sxs

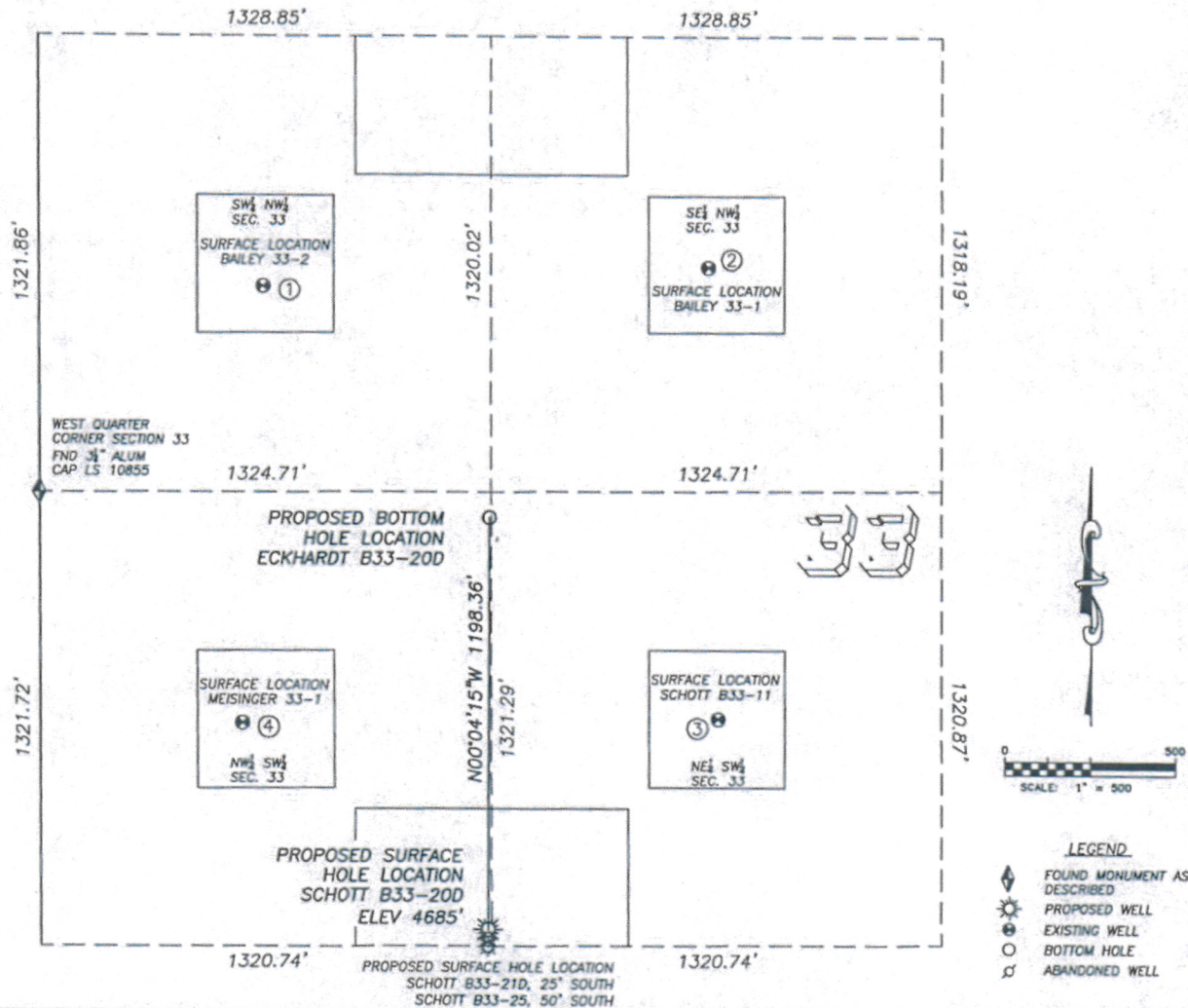


Zones: C/N
Surf Csg: 500 212 sxs
TD/MD: 7023/7189 624 sxs

DALEY LAND SURVEYING, INC. PARKER, CO. 80134 303 953 9841

SITE SKETCH SCHOTT B33-20D

SECTION 33, TOWNSHIP 5 NORTH, RANGE 64 WEST OF THE 6TH PRINCIPLE MERIDIAN



①
BAILEY 33-2
SW/NW SEC. 33
2046' FNL, 657' FWL
946' NW OF PROPOSED
BOTTOM HOLE LOCATION
LAT. N40.35742°
LONG. W104.56179°
EL: 4714'
PDOP 1.8

②
BAILEY 33-1
SE/NW SEC. 33
1988' FNL, 1966' FWL
968' NE OF PROPOSED
BOTTOM HOLE LOCATION
LAT. N40.35758°
LONG. W104.55709°
EL: 4690'
PDOP 2.6

③
SCHOTT B33-11
NE/SW SEC. 33
1981' FSL, 1988' FWL
891' SE OF PROPOSED
BOTTOM HOLE LOCATION
LAT. N40.35398°
LONG. W104.55697°
EL: 4683'
PDOP 1.7

④
MEISINGER 33-1
NW/SW SEC. 33
1972' FSL, 593' FWL
937' SW OF PROPOSED
BOTTOM HOLE LOCATION
LAT. N40.35394°
LONG. W104.56197°
EL: 4702'
PDOP 2.3

NOTES:
1) THIS DOES NOT REPRESENT A BOUNDARY SURVEY
2) THE LATITUDES AND LONGITUDES SHOWN ARE
REFERENCED TO NAD83
3) DATUM FOR ELEVATION IS NAVD88. ELEVATIONS ARE
DERIVED FROM GPS-RTK OBSERVATIONS PROCESSED
THROUGH OPUS, UTILIZING THE GEOID03 MODEL.