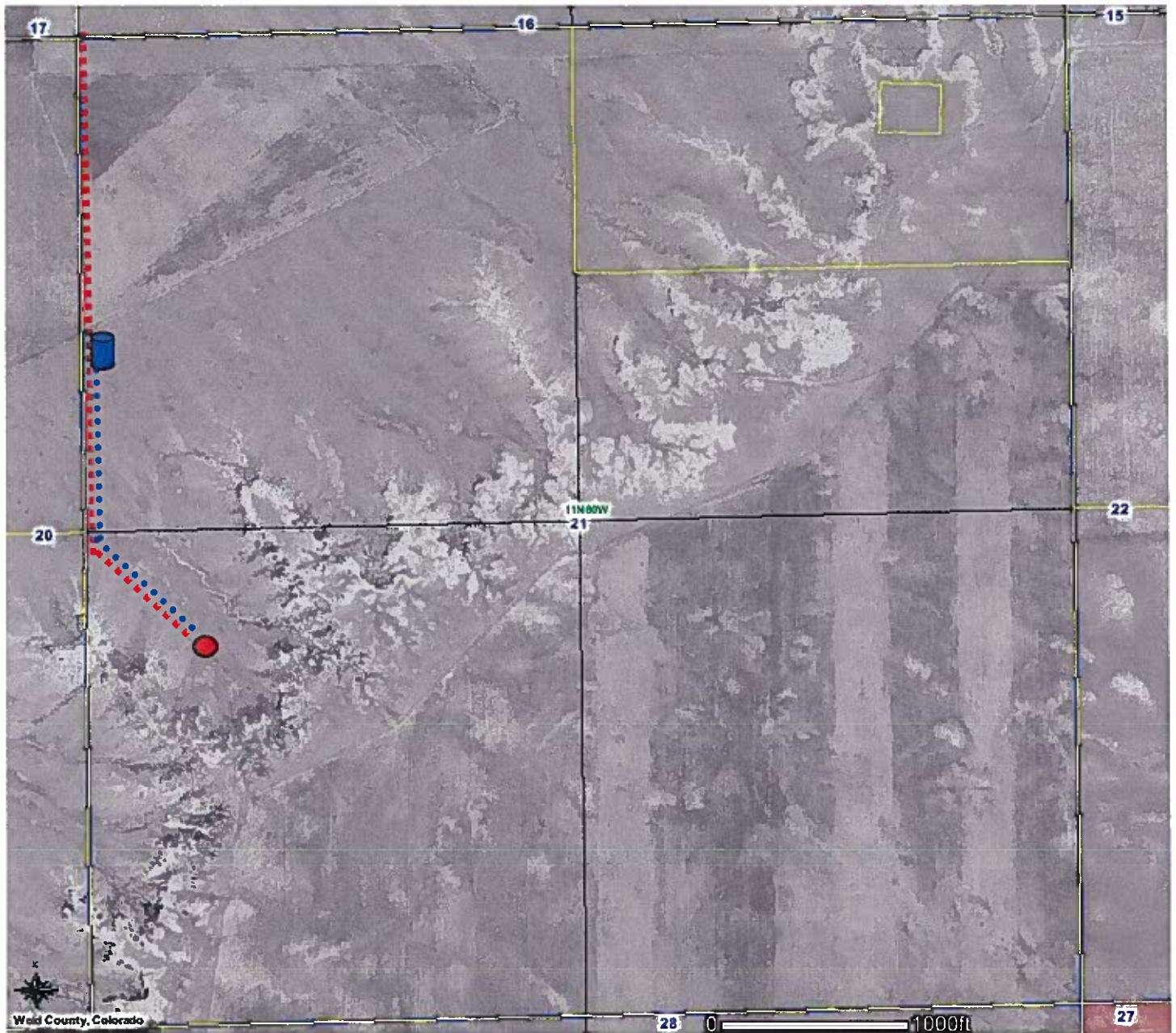



LOCATION DRAWING

EVERITT 1160-21-32 (TANK BATTERY)

T11N-R60W SEC 21: NW/4



Access Road
Flow Line
Tank Battery	

*no visible
improvements within
400 ft. per J.K. phone
11/16/09*

RECEIVED
NOV 13 2009
COGCC

* PER PCR'S AGREEMENT WITH THE SURFACE OWNER, THE SURFACE OWNER WILL DECIDE WHERE THE LOCATION OF THE TANK FACILITIES WILL BE. THE DETERMINATION WILL BE MADE AFTER DRILLING OPERATIONS. THE SITE WILL MOST LIKELY BE LOCATED AS SHOWN ABOVE, AND MUST BE APPROVED BY PCR.