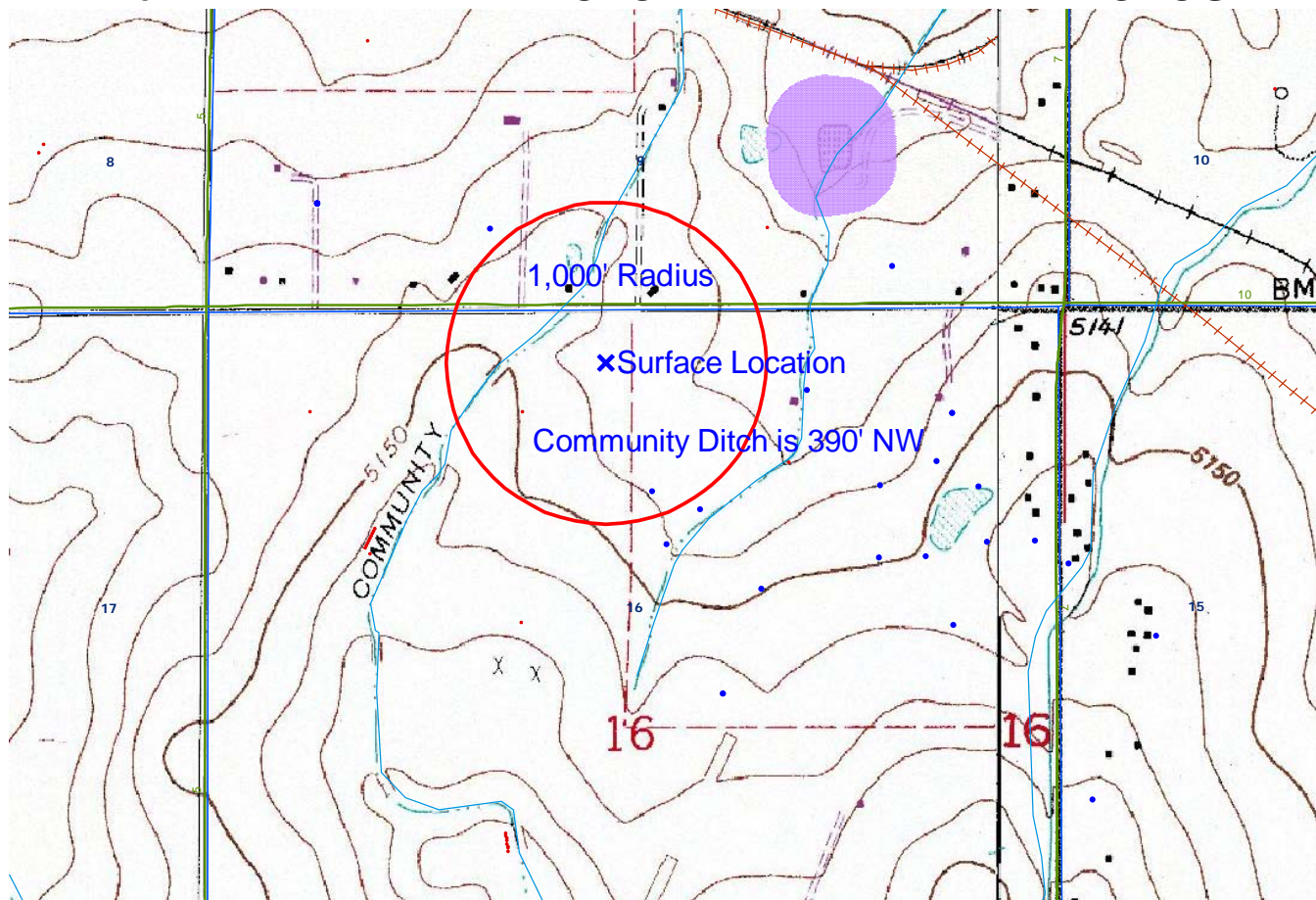


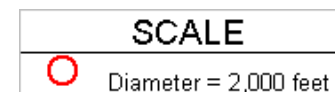
STATE 2-16

TOPO

HYDROLOGY MAP-A



TOWNSHIP 1 NORTH, RANGE 68 WEST



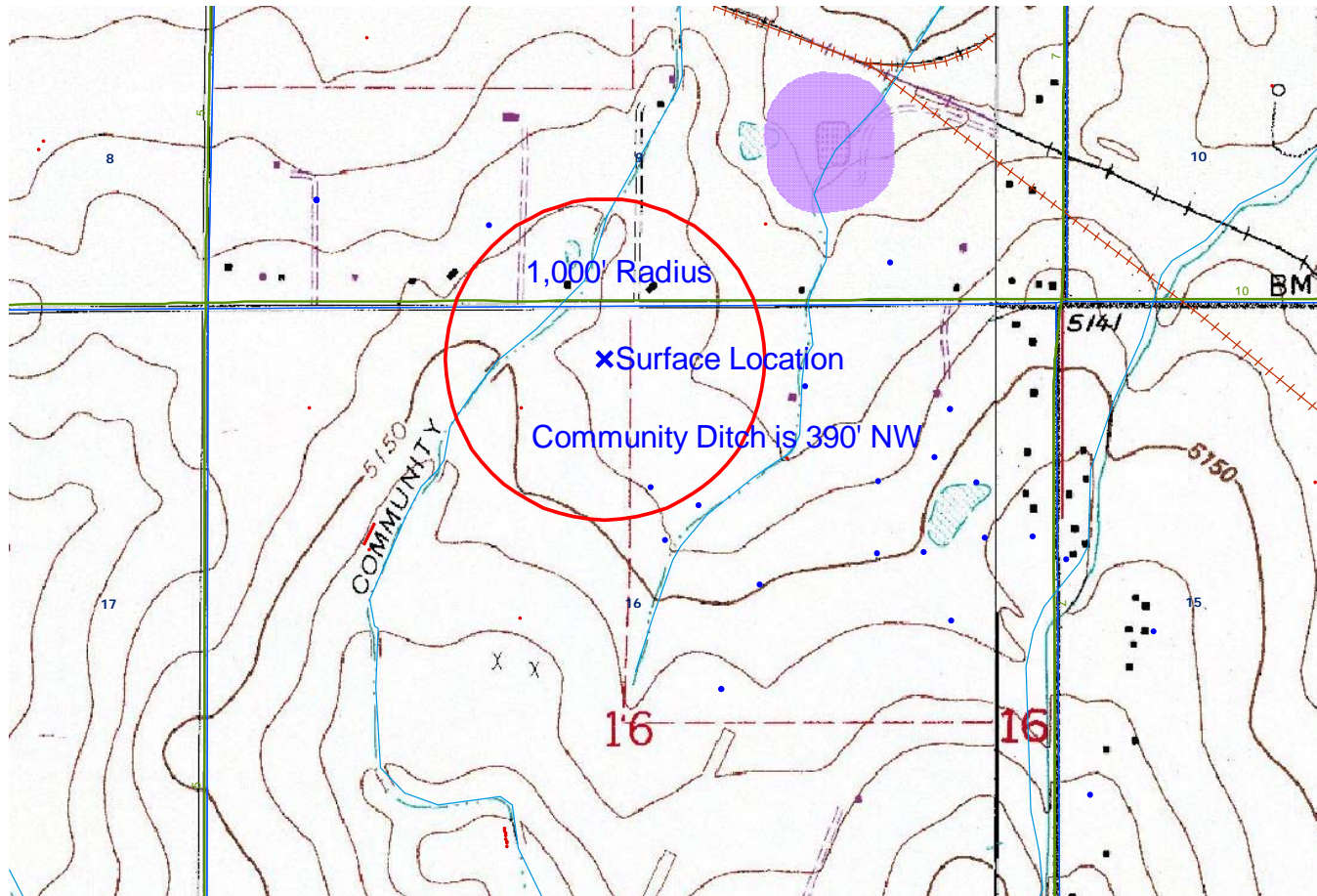
LEGEND A
WATER RESOURCES
Water Wells
Lakes
Major Rivers
Streams
300-Foot Stream Buffers

LEGEND B
1200-SEARIES WILDLIFE AREAS
RSO Areas
RSO_Osprey_Curren
SWH Areas
State Wildlife Areas

STATE 2-16


TOPO

HYDROLOGY MAP-B



TOWNSHIP 1 NORTH, RANGE 68 WEST

SCALE

 Diameter = 2,000 feet

LEGEND A

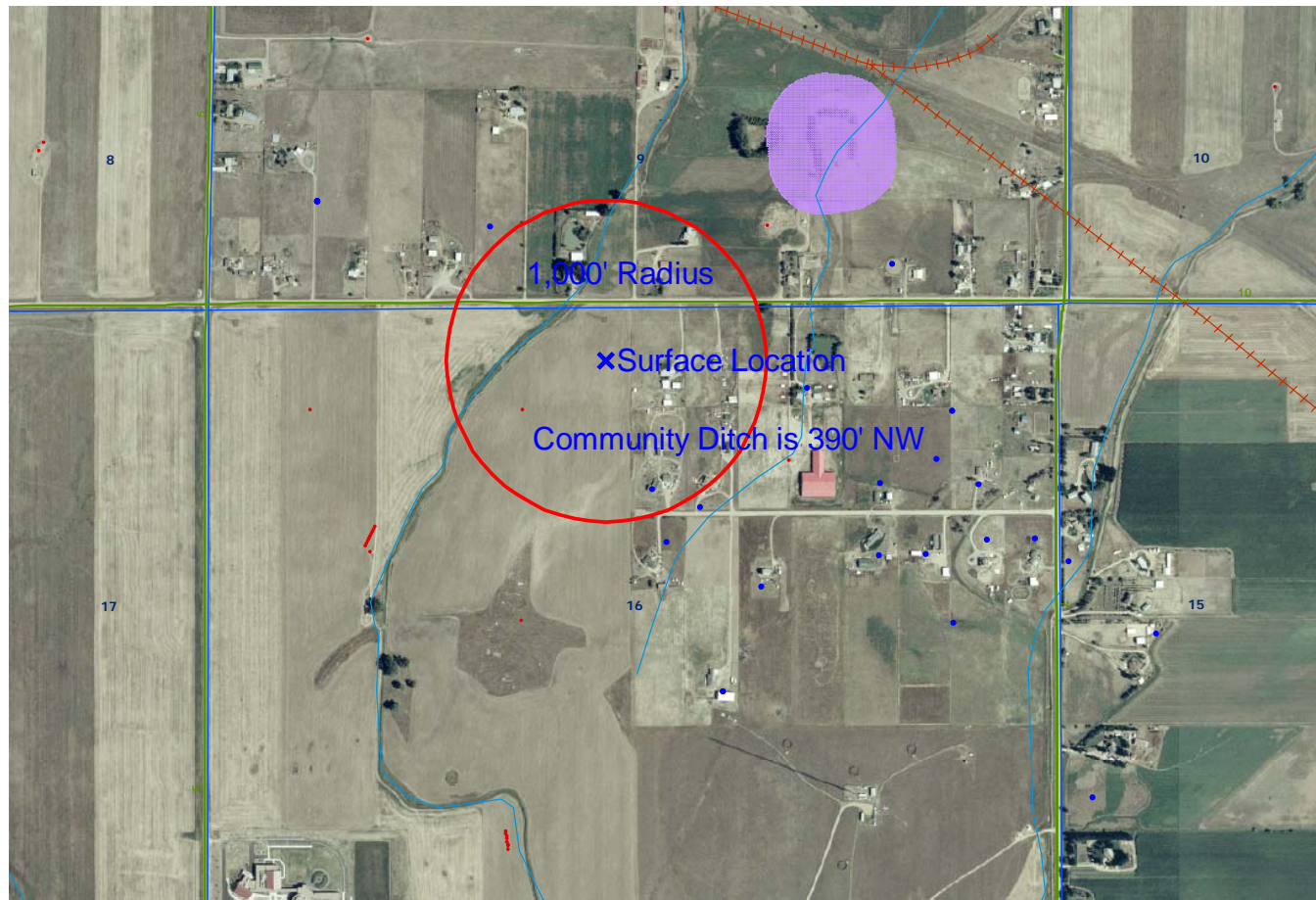
WATER RESOURCES

-  Water Wells
-  Lakes
-  Major Rivers
-  Streams
-  300-Foot Stream Buffers

LEGEND B

1200-SEARIES WILDLIFE AREAS

-  RSO Areas
-  RSO_Osprey_Curren
-  SWH Areas
-  State Wildlife Areas



TOWNSHIP 1 NORTH, RANGE 68 WEST

SCALE



Diameter = 2,000 feet

LEGEND A

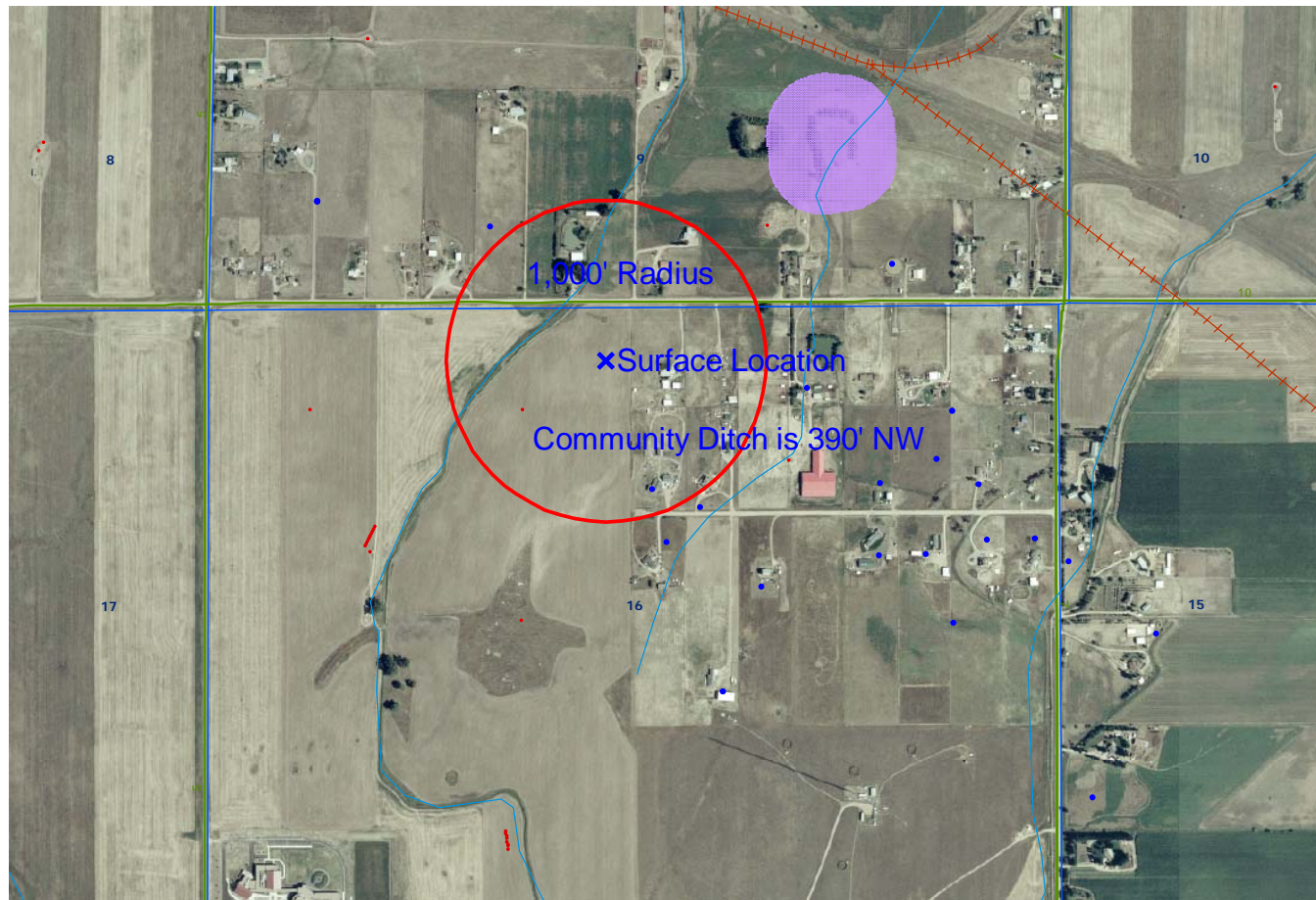
WATER RESOURCES

- Water Wells
- Lakes
- Major Rivers
- Streams
- 300-Foot Stream Buffers

LEGEND B


1200-SEARIES WILDLIFE AREAS

- RSO Areas
- RSO_Osprey_Curren
- SWH Areas
- State Wildlife Areas



TOWNSHIP 1 NORTH, RANGE 68 WEST

SCALE

 Diameter = 2,000 feet

LEGEND A

WATER RESOURCES

-  Water Wells
-  Lakes
-  Major Rivers
-  Streams
-  300-Foot Stream Buffers

LEGEND B

1200-SEARIES WILDLIFE AREAS

-  RSO Areas
-  RSO_Osprey_Curren
-  SWH Areas
-  State Wildlife Areas