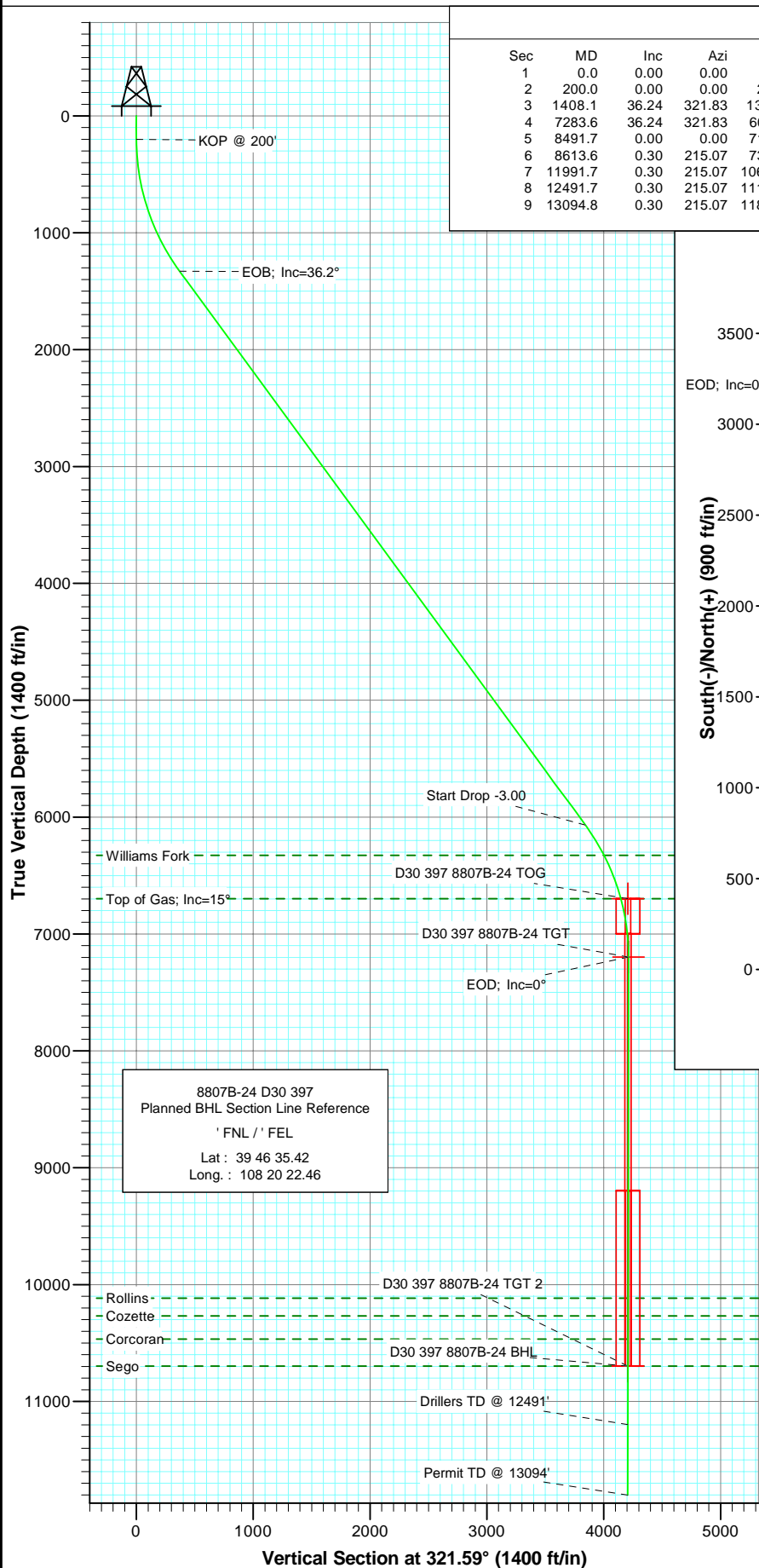
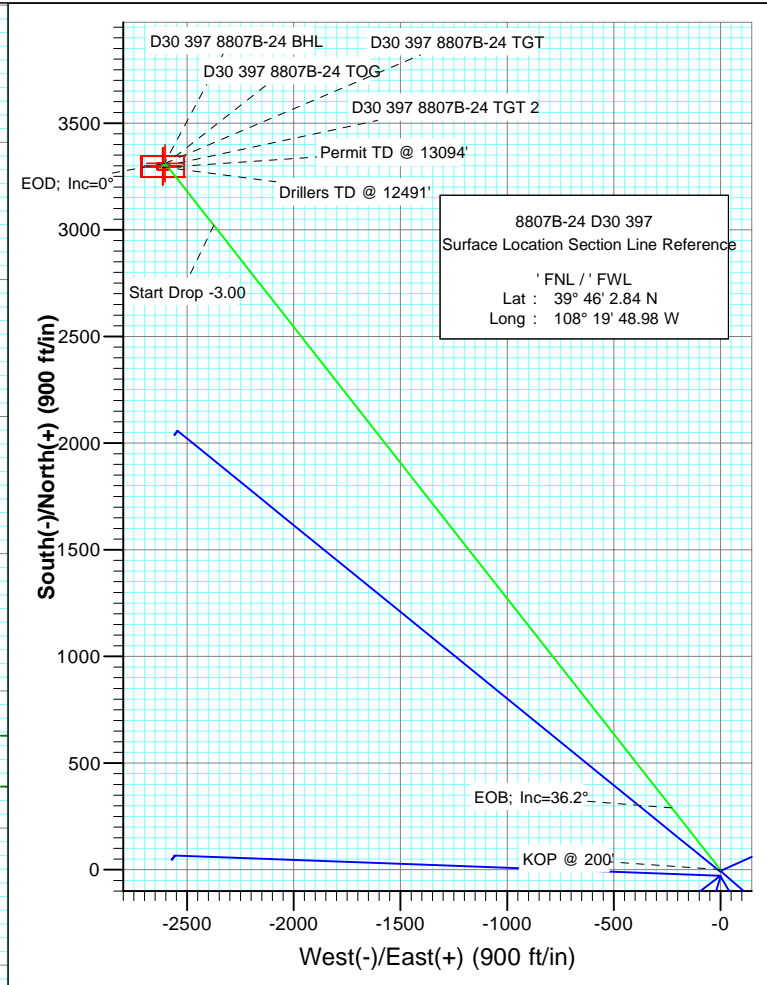




Project: Eureka Unit  
Site: Sec 19-T3S-R97W  
Well: 8807B-24 D30 397  
Wellbore: DD  
Plan: Plan #1



SECTION DETAILS											
Sec	MD	Inc	Azi	TVD	+N/-S	+E/-W	DLeg	TFace	VSec	Target	
1	0.0	0.00	0.00	0.0	0.0	0.0	0.00	0.00	0.0		
2	200.0	0.00	0.00	200.0	0.0	0.0	0.00	0.00	0.0		
3	1408.1	36.24	321.83	1329.1	290.5	-228.4	3.00	321.83	369.5		
4	7283.6	36.24	321.83	6067.9	3021.3	-2375.1	0.00	0.00	3843.1		
5	8491.7	0.00	0.00	7197.0	3311.8	-2603.5	3.00	180.00	4212.6	D30 397 8807B-24 TGT	
6	8613.6	0.30	215.07	7318.9	3311.5	-2603.7	0.25	215.07	4212.5		
7	11991.7	0.30	215.07	10697.0	3296.8	-2614.0	0.00	0.00	4207.4	D30 397 8807B-24 BHL	
8	12491.7	0.30	215.07	11197.0	3294.7	-2615.5	0.00	0.00	4206.6		
9	13094.8	0.30	215.07	11800.0	3292.0	-2617.4	0.00	0.00	4205.7		



FORMATION TOP DETAILS		
TVDPath	MDPath	Formation
6327.0	7588.4	Williams Fork
6697.0	7985.8	Top of Gas; Inc=15°
10117.0	11411.7	Rollins
10267.0	11561.7	Cozette
10467.0	11761.7	Corcoran
10697.0	11991.7	Sego

Azimuths to True North  
Magnetic North: 10.82°

Magnetic Field  
Strength: 52659.4nT  
Dip Angle: 65.97°  
Date: 2/25/2009  
Model: IGRF200510

DESIGN DETAILS: Plan #1				
Job# 95xxx; LR				
KB 8807B-24 D30 @ 7362.0ft (Original Well Elev)				
Target	Azimuth	Origin Type	N/S	E/W From TVD
D30 397 8807B-24 BHL	321.59 Slot		0.0	0.0 0.0

# Cathedral Energy Services

## Planning Report

<b>Database:</b>	EDM 2003.21 US Multi Users DB	<b>Local Co-ordinate Reference:</b>	Well 8807B-24 D30 397
<b>Company:</b>	EnCana Oil & Gas (USA) Inc	<b>TVD Reference:</b>	KB 8807B-24 D30 @ 7362.0ft (Original Well Elev)
<b>Project:</b>	Eureka Unit	<b>MD Reference:</b>	KB 8807B-24 D30 @ 7362.0ft (Original Well Elev)
<b>Site:</b>	Sec 19-T3S-R97W	<b>North Reference:</b>	True
<b>Well:</b>	8807B-24 D30 397	<b>Survey Calculation Method:</b>	Minimum Curvature
<b>Wellbore:</b>	DD		
<b>Design:</b>	Plan #1		

<b>Project</b>	Eureka Unit		
<b>Map System:</b>	US State Plane 1983	<b>System Datum:</b>	Mean Sea Level
<b>Geo Datum:</b>	North American Datum 1983		
<b>Map Zone:</b>	Colorado Central Zone		

<b>Site</b>	Sec 19-T3S-R97W			
<b>Site Position:</b>		<b>Northing:</b>	1,716,819.85 ft	<b>Latitude:</b> 39° 46' 2.82 N
<b>From:</b>	Lat/Long	<b>Easting:</b>	2,204,516.45 ft	<b>Longitude:</b> 108° 19' 48.89 W
<b>Position Uncertainty:</b>	0.0 ft	<b>Slot Radius:</b>	in	<b>Grid Convergence:</b> -1.79 °

<b>Well</b>	8807B-24 D30 397			
<b>Well Position</b>	<b>+N/-S</b>	0.0 ft	<b>Northing:</b>	1,716,822.08 ft
	<b>+E/-W</b>	0.0 ft	<b>Easting:</b>	2,204,509.49 ft
<b>Position Uncertainty</b>		0.0 ft	<b>Wellhead Elevation:</b>	ft
			<b>Ground Level:</b>	7,340.0 ft

<b>Wellbore</b>	DD				
<b>Magnetics</b>	<b>Model Name</b>	<b>Sample Date</b>	<b>Declination (°)</b>	<b>Dip Angle (°)</b>	<b>Field Strength (nT)</b>
	IGRF200510	2/25/2009	10.82	65.97	52,659

<b>Design</b>	Plan #1			
<b>Audit Notes:</b>				
<b>Version:</b>	<b>Phase:</b>	PLAN	<b>Tie On Depth:</b>	0.0
<b>Vertical Section:</b>	<b>Depth From (TVD) (ft)</b>	<b>+N/-S (ft)</b>	<b>+E/-W (ft)</b>	<b>Direction (°)</b>
	0.0	0.0	0.0	321.59

<b>Plan Sections</b>										
Measured Depth (ft)	Inclination (°)	Azimuth (°)	Vertical Depth (ft)	+N/-S (ft)	+E/-W (ft)	Dogleg Rate (°/100ft)	Build Rate (°/100ft)	Turn Rate (°/100ft)	TFO (°)	Target
0.0	0.00	0.00	0.0	0.0	0.0	0.00	0.00	0.00	0.00	
200.0	0.00	0.00	200.0	0.0	0.0	0.00	0.00	0.00	0.00	
1,408.1	36.24	321.83	1,329.1	290.5	-228.4	3.00	3.00	0.00	321.83	
7,283.6	36.24	321.83	6,067.9	3,021.3	-2,375.1	0.00	0.00	0.00	0.00	
8,491.7	0.00	0.00	7,197.0	3,311.8	-2,603.5	3.00	-3.00	0.00	180.00	D30 397 8807B-24 TC
8,613.6	0.30	215.07	7,318.9	3,311.5	-2,603.7	0.25	0.25	-118.91	215.07	
11,991.7	0.30	215.07	10,697.0	3,296.8	-2,614.0	0.00	0.00	0.00	0.00	D30 397 8807B-24 Bt
12,491.7	0.30	215.07	11,197.0	3,294.7	-2,615.5	0.00	0.00	0.00	0.00	
13,094.8	0.30	215.07	11,800.0	3,292.0	-2,617.4	0.00	0.00	0.00	0.00	

# Cathedral Energy Services

## Planning Report

<b>Database:</b>	EDM 2003.21 US Multi Users DB	<b>Local Co-ordinate Reference:</b>	Well 8807B-24 D30 397
<b>Company:</b>	EnCana Oil & Gas (USA) Inc	<b>TVD Reference:</b>	KB 8807B-24 D30 @ 7362.0ft (Original Well Elev)
<b>Project:</b>	Eureka Unit	<b>MD Reference:</b>	KB 8807B-24 D30 @ 7362.0ft (Original Well Elev)
<b>Site:</b>	Sec 19-T3S-R97W	<b>North Reference:</b>	True
<b>Well:</b>	8807B-24 D30 397	<b>Survey Calculation Method:</b>	Minimum Curvature
<b>Wellbore:</b>	DD		
<b>Design:</b>	Plan #1		

### Planned Survey

Measured Depth (ft)	Inclination (°)	Azimuth (°)	Vertical Depth (ft)	+N/-S (ft)	+E/-W (ft)	Vertical Section (ft)	Dogleg Rate (°/100ft)	Build Rate (°/100ft)	Comments / Formations
0.0	0.00	0.00	0.0	0.0	0.0	0.0	0.00	0.00	
30.0	0.00	0.00	30.0	0.0	0.0	0.0	0.00	0.00	
60.0	0.00	0.00	60.0	0.0	0.0	0.0	0.00	0.00	
90.0	0.00	0.00	90.0	0.0	0.0	0.0	0.00	0.00	
120.0	0.00	0.00	120.0	0.0	0.0	0.0	0.00	0.00	
150.0	0.00	0.00	150.0	0.0	0.0	0.0	0.00	0.00	
180.0	0.00	0.00	180.0	0.0	0.0	0.0	0.00	0.00	
200.0	0.00	0.00	200.0	0.0	0.0	0.0	0.00	0.00	KOP @ 200'
210.0	0.30	321.83	210.0	0.0	0.0	0.0	3.00	3.00	
240.0	1.20	321.83	240.0	0.3	-0.3	0.4	3.00	3.00	
270.0	2.10	321.83	270.0	1.0	-0.8	1.3	3.00	3.00	
300.0	3.00	321.83	300.0	2.1	-1.6	2.6	3.00	3.00	
330.0	3.90	321.83	329.9	3.5	-2.7	4.4	3.00	3.00	
360.0	4.80	321.83	359.8	5.3	-4.1	6.7	3.00	3.00	
390.0	5.70	321.83	389.7	7.4	-5.8	9.4	3.00	3.00	
420.0	6.60	321.83	419.5	10.0	-7.8	12.7	3.00	3.00	
450.0	7.50	321.83	449.3	12.8	-10.1	16.3	3.00	3.00	
480.0	8.40	321.83	479.0	16.1	-12.7	20.5	3.00	3.00	
510.0	9.30	321.83	508.6	19.7	-15.5	25.1	3.00	3.00	
540.0	10.20	321.83	538.2	23.7	-18.7	30.2	3.00	3.00	
570.0	11.10	321.83	567.7	28.1	-22.1	35.7	3.00	3.00	
600.0	12.00	321.83	597.1	32.8	-25.8	41.7	3.00	3.00	
630.0	12.90	321.83	626.4	37.9	-29.8	48.2	3.00	3.00	
660.0	13.80	321.83	655.6	43.3	-34.1	55.1	3.00	3.00	
690.0	14.70	321.83	684.6	49.1	-38.6	62.5	3.00	3.00	
720.0	15.60	321.83	713.6	55.3	-43.5	70.4	3.00	3.00	
750.0	16.50	321.83	742.4	61.8	-48.6	78.6	3.00	3.00	
780.0	17.40	321.83	771.1	68.7	-54.0	87.4	3.00	3.00	
810.0	18.30	321.83	799.7	75.9	-59.7	96.6	3.00	3.00	
840.0	19.20	321.83	828.1	83.5	-65.7	106.2	3.00	3.00	
870.0	20.10	321.83	856.3	91.4	-71.9	116.3	3.00	3.00	
900.0	21.00	321.83	884.4	99.7	-78.4	126.9	3.00	3.00	
930.0	21.90	321.83	912.4	108.4	-85.2	137.8	3.00	3.00	
960.0	22.80	321.83	940.1	117.3	-92.2	149.2	3.00	3.00	
990.0	23.70	321.83	967.7	126.6	-99.5	161.1	3.00	3.00	
1,020.0	24.60	321.83	995.0	136.3	-107.1	173.3	3.00	3.00	
1,050.0	25.50	321.83	1,022.2	146.3	-115.0	186.0	3.00	3.00	
1,080.0	26.40	321.83	1,049.2	156.6	-123.1	199.2	3.00	3.00	
1,110.0	27.30	321.83	1,076.0	167.2	-131.5	212.7	3.00	3.00	
1,140.0	28.20	321.83	1,102.5	178.2	-140.1	226.7	3.00	3.00	
1,170.0	29.10	321.83	1,128.8	189.5	-149.0	241.1	3.00	3.00	
1,200.0	30.00	321.83	1,154.9	201.2	-158.1	255.9	3.00	3.00	
1,230.0	30.90	321.83	1,180.8	213.1	-167.5	271.1	3.00	3.00	
1,260.0	31.80	321.83	1,206.4	225.4	-177.2	286.7	3.00	3.00	
1,290.0	32.70	321.83	1,231.8	238.0	-187.1	302.7	3.00	3.00	
1,320.0	33.60	321.83	1,256.9	250.9	-197.2	319.1	3.00	3.00	
1,350.0	34.50	321.83	1,281.8	264.1	-207.6	335.9	3.00	3.00	
1,380.0	35.40	321.83	1,306.3	277.6	-218.2	353.1	3.00	3.00	
1,408.1	36.24	321.83	1,329.1	290.5	-228.4	369.5	3.00	3.00	EOB; Inc=36.2°
1,410.0	36.24	321.83	1,330.7	291.4	-229.1	370.6	0.00	0.00	
1,440.0	36.24	321.83	1,354.9	305.3	-240.0	388.4	0.00	0.00	
1,470.0	36.24	321.83	1,379.1	319.3	-251.0	406.1	0.00	0.00	

# Cathedral Energy Services

## Planning Report

<b>Database:</b>	EDM 2003.21 US Multi Users DB	<b>Local Co-ordinate Reference:</b>	Well 8807B-24 D30 397
<b>Company:</b>	EnCana Oil & Gas (USA) Inc	<b>TVD Reference:</b>	KB 8807B-24 D30 @ 7362.0ft (Original Well Elev)
<b>Project:</b>	Eureka Unit	<b>MD Reference:</b>	KB 8807B-24 D30 @ 7362.0ft (Original Well Elev)
<b>Site:</b>	Sec 19-T3S-R97W	<b>North Reference:</b>	True
<b>Well:</b>	8807B-24 D30 397	<b>Survey Calculation Method:</b>	Minimum Curvature
<b>Wellbore:</b>	DD		
<b>Design:</b>	Plan #1		

### Planned Survey

Measured Depth (ft)	Inclination (°)	Azimuth (°)	Vertical Depth (ft)	+N/-S (ft)	+E/-W (ft)	Vertical Section (ft)	Dogleg Rate (°/100ft)	Build Rate (°/100ft)	Comments / Formations
1,500.0	36.24	321.83	1,403.2	333.2	-262.0	423.9	0.00	0.00	
1,530.0	36.24	321.83	1,427.4	347.2	-272.9	441.6	0.00	0.00	
1,560.0	36.24	321.83	1,451.6	361.1	-283.9	459.3	0.00	0.00	
1,590.0	36.24	321.83	1,475.8	375.0	-294.8	477.1	0.00	0.00	
1,620.0	36.24	321.83	1,500.0	389.0	-305.8	494.8	0.00	0.00	
1,650.0	36.24	321.83	1,524.2	402.9	-316.8	512.5	0.00	0.00	
1,680.0	36.24	321.83	1,548.4	416.9	-327.7	530.3	0.00	0.00	
1,710.0	36.24	321.83	1,572.6	430.8	-338.7	548.0	0.00	0.00	
1,740.0	36.24	321.83	1,596.8	444.8	-349.6	565.7	0.00	0.00	
1,770.0	36.24	321.83	1,621.0	458.7	-360.6	583.5	0.00	0.00	
1,800.0	36.24	321.83	1,645.2	472.7	-371.6	601.2	0.00	0.00	
1,830.0	36.24	321.83	1,669.4	486.6	-382.5	618.9	0.00	0.00	
1,860.0	36.24	321.83	1,693.6	500.5	-393.5	636.7	0.00	0.00	
1,890.0	36.24	321.83	1,717.8	514.5	-404.4	654.4	0.00	0.00	
1,920.0	36.24	321.83	1,742.0	528.4	-415.4	672.2	0.00	0.00	
1,950.0	36.24	321.83	1,766.2	542.4	-426.4	689.9	0.00	0.00	
1,980.0	36.24	321.83	1,790.4	556.3	-437.3	707.6	0.00	0.00	
2,010.0	36.24	321.83	1,814.6	570.3	-448.3	725.4	0.00	0.00	
2,040.0	36.24	321.83	1,838.8	584.2	-459.3	743.1	0.00	0.00	
2,070.0	36.24	321.83	1,863.0	598.1	-470.2	760.8	0.00	0.00	
2,100.0	36.24	321.83	1,887.2	612.1	-481.2	778.6	0.00	0.00	
2,130.0	36.24	321.83	1,911.4	626.0	-492.1	796.3	0.00	0.00	
2,160.0	36.24	321.83	1,935.6	640.0	-503.1	814.0	0.00	0.00	
2,190.0	36.24	321.83	1,959.8	653.9	-514.1	831.8	0.00	0.00	
2,220.0	36.24	321.83	1,983.9	667.9	-525.0	849.5	0.00	0.00	
2,250.0	36.24	321.83	2,008.1	681.8	-536.0	867.2	0.00	0.00	
2,280.0	36.24	321.83	2,032.3	695.7	-546.9	885.0	0.00	0.00	
2,310.0	36.24	321.83	2,056.5	709.7	-557.9	902.7	0.00	0.00	
2,340.0	36.24	321.83	2,080.7	723.6	-568.9	920.5	0.00	0.00	
2,370.0	36.24	321.83	2,104.9	737.6	-579.8	938.2	0.00	0.00	
2,400.0	36.24	321.83	2,129.1	751.5	-590.8	955.9	0.00	0.00	
2,430.0	36.24	321.83	2,153.3	765.5	-601.8	973.7	0.00	0.00	
2,460.0	36.24	321.83	2,177.5	779.4	-612.7	991.4	0.00	0.00	
2,490.0	36.24	321.83	2,201.7	793.3	-623.7	1,009.1	0.00	0.00	

# Cathedral Energy Services

## Planning Report

<b>Database:</b>	EDM 2003.21 US Multi Users DB	<b>Local Co-ordinate Reference:</b>	Well 8807B-24 D30 397
<b>Company:</b>	EnCana Oil & Gas (USA) Inc	<b>TVD Reference:</b>	KB 8807B-24 D30 @ 7362.0ft (Original Well Elev)
<b>Project:</b>	Eureka Unit	<b>MD Reference:</b>	KB 8807B-24 D30 @ 7362.0ft (Original Well Elev)
<b>Site:</b>	Sec 19-T3S-R97W	<b>North Reference:</b>	True
<b>Well:</b>	8807B-24 D30 397	<b>Survey Calculation Method:</b>	Minimum Curvature
<b>Wellbore:</b>	DD		
<b>Design:</b>	Plan #1		

### Planned Survey

Measured Depth (ft)	Inclination (°)	Azimuth (°)	Vertical Depth (ft)	+N/-S (ft)	+E/-W (ft)	Vertical Section (ft)	Dogleg Rate (°/100ft)	Build Rate (°/100ft)	Comments / Formations
2,500.0	36.24	321.83	2,209.8	798.0	-627.3	1,015.0	0.00	0.00	
2,600.0	36.24	321.83	2,290.4	844.5	-663.9	1,074.2	0.00	0.00	
2,700.0	36.24	321.83	2,371.1	891.0	-700.4	1,133.3	0.00	0.00	
2,800.0	36.24	321.83	2,451.7	937.4	-736.9	1,192.4	0.00	0.00	
2,900.0	36.24	321.83	2,532.4	983.9	-773.5	1,251.5	0.00	0.00	
3,000.0	36.24	321.83	2,613.0	1,030.4	-810.0	1,310.6	0.00	0.00	
3,100.0	36.24	321.83	2,693.7	1,076.9	-846.6	1,369.8	0.00	0.00	
3,200.0	36.24	321.83	2,774.3	1,123.3	-883.1	1,428.9	0.00	0.00	
3,300.0	36.24	321.83	2,855.0	1,169.8	-919.6	1,488.0	0.00	0.00	
3,400.0	36.24	321.83	2,935.7	1,216.3	-956.2	1,547.1	0.00	0.00	
3,500.0	36.24	321.83	3,016.3	1,262.8	-992.7	1,606.2	0.00	0.00	
3,600.0	36.24	321.83	3,097.0	1,309.2	-1,029.2	1,665.4	0.00	0.00	
3,700.0	36.24	321.83	3,177.6	1,355.7	-1,065.8	1,724.5	0.00	0.00	
3,800.0	36.24	321.83	3,258.3	1,402.2	-1,102.3	1,783.6	0.00	0.00	
3,900.0	36.24	321.83	3,338.9	1,448.7	-1,138.8	1,842.7	0.00	0.00	
4,000.0	36.24	321.83	3,419.6	1,495.2	-1,175.4	1,901.8	0.00	0.00	
4,100.0	36.24	321.83	3,500.2	1,541.6	-1,211.9	1,961.0	0.00	0.00	
4,200.0	36.24	321.83	3,580.9	1,588.1	-1,248.5	2,020.1	0.00	0.00	
4,300.0	36.24	321.83	3,661.5	1,634.6	-1,285.0	2,079.2	0.00	0.00	
4,400.0	36.24	321.83	3,742.2	1,681.1	-1,321.5	2,138.3	0.00	0.00	
4,500.0	36.24	321.83	3,822.8	1,727.5	-1,358.1	2,197.4	0.00	0.00	
4,600.0	36.24	321.83	3,903.5	1,774.0	-1,394.6	2,256.5	0.00	0.00	
4,700.0	36.24	321.83	3,984.1	1,820.5	-1,431.1	2,315.7	0.00	0.00	
4,800.0	36.24	321.83	4,064.8	1,867.0	-1,467.7	2,374.8	0.00	0.00	
4,900.0	36.24	321.83	4,145.4	1,913.5	-1,504.2	2,433.9	0.00	0.00	
5,000.0	36.24	321.83	4,226.1	1,959.9	-1,540.8	2,493.0	0.00	0.00	
5,100.0	36.24	321.83	4,306.7	2,006.4	-1,577.3	2,552.1	0.00	0.00	
5,200.0	36.24	321.83	4,387.4	2,052.9	-1,613.8	2,611.3	0.00	0.00	
5,300.0	36.24	321.83	4,468.1	2,099.4	-1,650.4	2,670.4	0.00	0.00	
5,400.0	36.24	321.83	4,548.7	2,145.8	-1,686.9	2,729.5	0.00	0.00	
5,500.0	36.24	321.83	4,629.4	2,192.3	-1,723.4	2,788.6	0.00	0.00	
5,600.0	36.24	321.83	4,710.0	2,238.8	-1,760.0	2,847.7	0.00	0.00	
5,700.0	36.24	321.83	4,790.7	2,285.3	-1,796.5	2,906.9	0.00	0.00	
5,800.0	36.24	321.83	4,871.3	2,331.8	-1,833.1	2,966.0	0.00	0.00	
5,900.0	36.24	321.83	4,952.0	2,378.2	-1,869.6	3,025.1	0.00	0.00	
6,000.0	36.24	321.83	5,032.6	2,424.7	-1,906.1	3,084.2	0.00	0.00	
6,100.0	36.24	321.83	5,113.3	2,471.2	-1,942.7	3,143.3	0.00	0.00	
6,200.0	36.24	321.83	5,193.9	2,517.7	-1,979.2	3,202.5	0.00	0.00	
6,300.0	36.24	321.83	5,274.6	2,564.1	-2,015.7	3,261.6	0.00	0.00	
6,400.0	36.24	321.83	5,355.2	2,610.6	-2,052.3	3,320.7	0.00	0.00	
6,500.0	36.24	321.83	5,435.9	2,657.1	-2,088.8	3,379.8	0.00	0.00	
6,600.0	36.24	321.83	5,516.5	2,703.6	-2,125.4	3,438.9	0.00	0.00	
6,700.0	36.24	321.83	5,597.2	2,750.1	-2,161.9	3,498.1	0.00	0.00	
6,800.0	36.24	321.83	5,677.8	2,796.5	-2,198.4	3,557.2	0.00	0.00	
6,900.0	36.24	321.83	5,758.5	2,843.0	-2,235.0	3,616.3	0.00	0.00	
7,000.0	36.24	321.83	5,839.1	2,889.5	-2,271.5	3,675.4	0.00	0.00	
7,100.0	36.24	321.83	5,919.8	2,936.0	-2,308.0	3,734.5	0.00	0.00	
7,200.0	36.24	321.83	6,000.5	2,982.4	-2,344.6	3,793.7	0.00	0.00	
7,283.6	36.24	321.83	6,067.9	3,021.3	-2,375.1	3,843.1	0.00	0.00	Start Drop -3.00
7,300.0	35.75	321.83	6,081.1	3,028.9	-2,381.1	3,852.7	3.00	-3.00	
7,400.0	32.75	321.83	6,163.8	3,073.1	-2,415.9	3,909.0	3.00	-3.00	
7,500.0	29.75	321.83	6,249.3	3,113.9	-2,447.9	3,960.9	3.00	-3.00	

# Cathedral Energy Services

## Planning Report

<b>Database:</b>	EDM 2003.21 US Multi Users DB	<b>Local Co-ordinate Reference:</b>	Well 8807B-24 D30 397
<b>Company:</b>	EnCana Oil & Gas (USA) Inc	<b>TVD Reference:</b>	KB 8807B-24 D30 @ 7362.0ft (Original Well Elev)
<b>Project:</b>	Eureka Unit	<b>MD Reference:</b>	KB 8807B-24 D30 @ 7362.0ft (Original Well Elev)
<b>Site:</b>	Sec 19-T3S-R97W	<b>North Reference:</b>	True
<b>Well:</b>	8807B-24 D30 397	<b>Survey Calculation Method:</b>	Minimum Curvature
<b>Wellbore:</b>	DD		
<b>Design:</b>	Plan #1		

### Planned Survey

Measured Depth (ft)	Inclination (°)	Azimuth (°)	Vertical Depth (ft)	+N/-S (ft)	+E/-W (ft)	Vertical Section (ft)	Dogleg Rate (°/100ft)	Build Rate (°/100ft)	Comments / Formations
7,588.4	27.10	321.83	6,327.0	3,147.0	-2,473.9	4,002.9	3.00	-3.00	Williams Fork
7,600.0	26.75	321.83	6,337.4	3,151.1	-2,477.2	4,008.2	3.00	-3.00	
7,700.0	23.75	321.83	6,427.8	3,184.6	-2,503.5	4,050.8	3.00	-3.00	
7,800.0	20.75	321.83	6,520.3	3,214.4	-2,526.9	4,088.7	3.00	-3.00	
7,900.0	17.75	321.83	6,614.7	3,240.3	-2,547.3	4,121.7	3.00	-3.00	
7,985.8	15.18	321.83	6,697.0	3,259.4	-2,562.3	4,146.0	3.00	-3.00	Top of Gas; Inc=15°
8,000.0	14.75	321.83	6,710.7	3,262.3	-2,564.6	4,149.6	3.00	-3.00	D30 397 8807B-24 TOG
8,100.0	11.75	321.83	6,808.0	3,280.3	-2,578.8	4,172.6	3.00	-3.00	
8,200.0	8.75	321.83	6,906.4	3,294.3	-2,589.8	4,190.4	3.00	-3.00	
8,300.0	5.75	321.83	7,005.6	3,304.2	-2,597.6	4,203.0	3.00	-3.00	
8,400.0	2.75	321.83	7,105.3	3,310.1	-2,602.1	4,210.4	3.00	-3.00	
8,491.7	0.00	0.00	7,197.0	3,311.8	-2,603.5	4,212.6	3.00	-3.00	EOD; Inc=0° - D30 397 8807B-24 TGT
8,500.0	0.02	215.07	7,205.3	3,311.8	-2,603.5	4,212.6	0.25	0.25	
8,600.0	0.27	215.07	7,305.3	3,311.6	-2,603.6	4,212.5	0.25	0.25	
8,613.6	0.30	215.07	7,318.9	3,311.5	-2,603.7	4,212.5	0.25	0.25	
8,700.0	0.30	215.07	7,405.3	3,311.2	-2,604.0	4,212.4	0.00	0.00	
8,800.0	0.30	215.07	7,505.3	3,310.7	-2,604.3	4,212.2	0.00	0.00	
8,900.0	0.30	215.07	7,605.3	3,310.3	-2,604.6	4,212.1	0.00	0.00	
9,000.0	0.30	215.07	7,705.3	3,309.9	-2,604.9	4,211.9	0.00	0.00	
9,100.0	0.30	215.07	7,805.3	3,309.4	-2,605.2	4,211.8	0.00	0.00	
9,200.0	0.30	215.07	7,905.3	3,309.0	-2,605.5	4,211.6	0.00	0.00	
9,300.0	0.30	215.07	8,005.3	3,308.5	-2,605.8	4,211.5	0.00	0.00	
9,400.0	0.30	215.07	8,105.3	3,308.1	-2,606.1	4,211.3	0.00	0.00	
9,500.0	0.30	215.07	8,205.3	3,307.7	-2,606.4	4,211.2	0.00	0.00	
9,600.0	0.30	215.07	8,305.3	3,307.2	-2,606.7	4,211.0	0.00	0.00	
9,700.0	0.30	215.07	8,405.3	3,306.8	-2,607.0	4,210.9	0.00	0.00	
9,800.0	0.30	215.07	8,505.3	3,306.4	-2,607.3	4,210.7	0.00	0.00	
9,900.0	0.30	215.07	8,605.3	3,305.9	-2,607.6	4,210.6	0.00	0.00	
10,000.0	0.30	215.07	8,705.3	3,305.5	-2,607.9	4,210.4	0.00	0.00	
10,100.0	0.30	215.07	8,805.3	3,305.1	-2,608.2	4,210.3	0.00	0.00	
10,200.0	0.30	215.07	8,905.3	3,304.6	-2,608.5	4,210.1	0.00	0.00	
10,300.0	0.30	215.07	9,005.3	3,304.2	-2,608.8	4,209.9	0.00	0.00	
10,400.0	0.30	215.07	9,105.3	3,303.8	-2,609.1	4,209.8	0.00	0.00	
10,500.0	0.30	215.07	9,205.3	3,303.3	-2,609.5	4,209.6	0.00	0.00	
10,600.0	0.30	215.07	9,305.3	3,302.9	-2,609.8	4,209.5	0.00	0.00	
10,700.0	0.30	215.07	9,405.3	3,302.5	-2,610.1	4,209.3	0.00	0.00	
10,800.0	0.30	215.07	9,505.3	3,302.0	-2,610.4	4,209.2	0.00	0.00	
10,900.0	0.30	215.07	9,605.3	3,301.6	-2,610.7	4,209.0	0.00	0.00	
11,000.0	0.30	215.07	9,705.3	3,301.1	-2,611.0	4,208.9	0.00	0.00	
11,100.0	0.30	215.07	9,805.3	3,300.7	-2,611.3	4,208.7	0.00	0.00	
11,200.0	0.30	215.07	9,905.3	3,300.3	-2,611.6	4,208.6	0.00	0.00	
11,300.0	0.30	215.07	10,005.3	3,299.8	-2,611.9	4,208.4	0.00	0.00	
11,400.0	0.30	215.07	10,105.3	3,299.4	-2,612.2	4,208.3	0.00	0.00	
11,411.7	0.30	215.07	10,117.0	3,299.4	-2,612.2	4,208.3	0.00	0.00	Rollins
11,500.0	0.30	215.07	10,205.3	3,299.0	-2,612.5	4,208.1	0.00	0.00	
11,561.7	0.30	215.07	10,267.0	3,298.7	-2,612.7	4,208.0	0.00	0.00	Cozette
11,600.0	0.30	215.07	10,305.3	3,298.5	-2,612.8	4,208.0	0.00	0.00	
11,700.0	0.30	215.07	10,405.3	3,298.1	-2,613.1	4,207.8	0.00	0.00	
11,761.7	0.30	215.07	10,467.0	3,297.8	-2,613.3	4,207.7	0.00	0.00	Corcoran
11,800.0	0.30	215.07	10,505.3	3,297.7	-2,613.4	4,207.7	0.00	0.00	
11,900.0	0.30	215.07	10,605.3	3,297.2	-2,613.7	4,207.5	0.00	0.00	
11,991.7	0.30	215.07	10,697.0	3,296.8	-2,614.0	4,207.4	0.00	0.00	Sego - D30 397 8807B-24 TGT 2 - D30 397 8807B-24 TGT

# Cathedral Energy Services

## Planning Report

<b>Database:</b>	EDM 2003.21 US Multi Users DB	<b>Local Co-ordinate Reference:</b>	Well 8807B-24 D30 397
<b>Company:</b>	EnCana Oil & Gas (USA) Inc	<b>TVD Reference:</b>	KB 8807B-24 D30 @ 7362.0ft (Original Well Elev)
<b>Project:</b>	Eureka Unit	<b>MD Reference:</b>	KB 8807B-24 D30 @ 7362.0ft (Original Well Elev)
<b>Site:</b>	Sec 19-T3S-R97W	<b>North Reference:</b>	True
<b>Well:</b>	8807B-24 D30 397	<b>Survey Calculation Method:</b>	Minimum Curvature
<b>Wellbore:</b>	DD		
<b>Design:</b>	Plan #1		

### Planned Survey

Measured Depth (ft)	Inclination (°)	Azimuth (°)	Vertical Depth (ft)	+N/-S (ft)	+E/-W (ft)	Vertical Section (ft)	Dogleg Rate (°/100ft)	Build Rate (°/100ft)	Comments / Formations
12,000.0	0.30	215.07	10,705.3	3,296.8	-2,614.0	4,207.4	0.00	0.00	
12,100.0	0.30	215.07	10,805.3	3,296.4	-2,614.3	4,207.2	0.00	0.00	
12,200.0	0.30	215.07	10,905.3	3,295.9	-2,614.6	4,207.1	0.00	0.00	
12,300.0	0.30	215.07	11,005.3	3,295.5	-2,615.0	4,206.9	0.00	0.00	
12,400.0	0.30	215.07	11,105.3	3,295.1	-2,615.3	4,206.8	0.00	0.00	
12,491.7	0.30	215.07	11,197.0	3,294.7	-2,615.5	4,206.6	0.00	0.00	Drillers TD @ 12491'
12,500.0	0.30	215.07	11,205.3	3,294.6	-2,615.6	4,206.6	0.00	0.00	
12,600.0	0.30	215.07	11,305.3	3,294.2	-2,615.9	4,206.5	0.00	0.00	
12,700.0	0.30	215.07	11,405.3	3,293.7	-2,616.2	4,206.3	0.00	0.00	
12,800.0	0.30	215.07	11,505.2	3,293.3	-2,616.5	4,206.2	0.00	0.00	
12,900.0	0.30	215.07	11,605.2	3,292.9	-2,616.8	4,206.0	0.00	0.00	
13,000.0	0.30	215.07	11,705.2	3,292.4	-2,617.1	4,205.9	0.00	0.00	
13,094.8	0.30	215.07	11,800.0	3,292.0	-2,617.4	4,205.7	0.00	0.00	

### Targets

Target Name - hit/miss target - Shape	Dip Angle (°)	Dip Dir. (°)	TVD (ft)	+N/-S (ft)	+E/-W (ft)	Northing (ft)	Easting (ft)	Latitude	Longitude
D30 397 8807B-24 TGT - plan hits target center - Point	0.00	0.00	7,197.0	3,311.8	-2,603.5	1,720,213.37	2,202,010.41	39° 46' 35.57 N	108° 20' 22.33 W
D30 397 8807B-24 TGT - plan hits target center - Rectangle (sides W100.0 H200.0 D0.0)	0.00	0.00	10,697.0	3,296.8	-2,614.0	1,720,198.74	2,201,999.44	39° 46' 35.42 N	108° 20' 22.46 W
D30 397 8807B-24 TOG - plan misses target center by 61.8ft at 8000.0ft MD (6710.7 TVD, 3262.3 N, -2564.6 E) - Rectangle (sides W100.0 H200.0 D300.0)	0.00	0.00	6,697.0	3,296.8	-2,614.0	1,720,198.74	2,201,999.44	39° 46' 35.42 N	108° 20' 22.46 W
D30 397 8807B-24 BHL - plan hits target center - Rectangle (sides W30.0 H50.0 D0.0)	0.00	0.00	10,697.0	3,296.8	-2,614.0	1,720,198.74	2,201,999.44	39° 46' 35.42 N	108° 20' 22.46 W

### Formations

Measured Depth (ft)	Vertical Depth (ft)	Name	Lithology	Dip (°)	Dip Direction (°)
7,588.4	6,327.0	Williams Fork		0.00	
7,985.8	6,697.0	Top of Gas; Inc=15°		0.00	
11,411.7	10,117.0	Rollins		0.00	
11,561.7	10,267.0	Cozette		0.00	
11,761.7	10,467.0	Corcoran		0.00	
11,991.7	10,697.0	Sego		0.00	

# Cathedral Energy Services

## Planning Report

<b>Database:</b>	EDM 2003.21 US Multi Users DB	<b>Local Co-ordinate Reference:</b>	Well 8807B-24 D30 397
<b>Company:</b>	EnCana Oil & Gas (USA) Inc	<b>TVD Reference:</b>	KB 8807B-24 D30 @ 7362.0ft (Original Well Elev)
<b>Project:</b>	Eureka Unit	<b>MD Reference:</b>	KB 8807B-24 D30 @ 7362.0ft (Original Well Elev)
<b>Site:</b>	Sec 19-T3S-R97W	<b>North Reference:</b>	True
<b>Well:</b>	8807B-24 D30 397	<b>Survey Calculation Method:</b>	Minimum Curvature
<b>Wellbore:</b>	DD		
<b>Design:</b>	Plan #1		

Plan Annotations				
Measured Depth (ft)	Vertical Depth (ft)	Local Coordinates		Comment
		+N/-S (ft)	+E/-W (ft)	
200.0	200.0	0.0	0.0	KOP @ 200'
1,408.1	1,329.1	290.5	-228.4	EOB; Inc=36.2°
7,283.6	6,067.9	3,021.3	-2,375.1	Start Drop -3.00
8,491.7	7,197.0	3,311.8	-2,603.5	EOD; Inc=0°
12,491.7	11,197.0	3,294.7	-2,615.5	Drillers TD @ 12491'
13,094.8	11,800.0	3,292.0	-2,617.4	Permit TD @ 13094'