

T3S, R97W, 6th P.M.

R 98  
W 97

N87°46'56"W - 2694.43' (Meas.)

N87°21'46"W - 2693.74' (Meas.)

1938 Brass Cap  
0.1' High, Pile  
of Stones  
Lat: 39.781908  
Long: 108.332417

1938 Brass Cap  
0.5' High, Pile  
of Stones  
Lat: 39.781619  
Long: 108.322842

1938 Brass Cap  
0.4' High, Pile  
of Stones  
Lat: 39.781278  
Long: 108.313269

Lot 1

COC065559

Lot 2

NOTE:  
THE PROPOSED BOTTOM HOLE FOR THIS WELL  
IS LOCATED IN THE SW 1/4 NE 1/4 OF SECTION  
24, T3S, R98W, 6th P.M. AT A DISTANCE OF  
1946' PNL 2067' FEL. IT BEARS N38°25'24"W  
4208.85' FROM THE PROPOSED WELL HEAD.

1938 Brass Cap  
0.3' High, Pile  
of Stones  
Lat: 39.774642  
Long: 108.332153

Lot 3

NOTE:  
SEE ADDENDUM PLAT FOR EXISTING  
IMPROVEMENT WITHIN 200' OF THE  
PROPOSED WELL HEAD.

Lot 4

EUREKA UNIT #8807B-24

Elev. Ungraded Ground = 7339.8'

Elev. Graded Ground = 7335.0'

COC065559

FEE

1938 Brass Cap  
2.5' High, Pile  
of Stones  
Lat: 39.786908  
Long: 108.312928

45'

N88°12'54"W - 5333.71' (Meas.)

N01°38'52"W - 2651.54' (Meas.)

N01°37'11"W - 2648.90' (Meas.)

N01°04'57"W - 5237.13' (Meas.)

**Encana Oil & Gas (USA) INC.**  
Well location, EUREKA UNIT #8807B-24 D30  
397 (SURFACE LOCATION), located as shown  
in Lot 4 of Section 19, T3S, R97W, 6th P.M.,  
Rio Blanco County, Colorado.

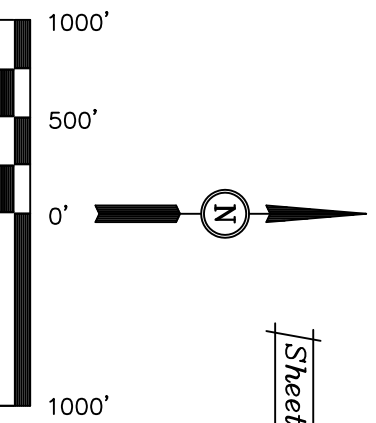
**BASIS OF ELEVATION**

BENCH MARK (H79) LOCATED IN THE NE 1/4 OF SECTION  
35, T4S, R98W, 6th P.M. TAKEN FROM THE BULL FORK  
QUADRANGLE, COLORADO, 7.5 MINUTE SERIES (TOPO  
GRAPHICAL MAP) PUBLISHED BY THE UNITED STATES  
DEPARTMENT OF THE INTERIOR, GEOLOGICAL SURVEY.  
SAID ELEVATION IS MARKED AS BEING 8535 FEET.

**BASIS OF BEARINGS**

BASIS OF BEARINGS IS A G.P.S. OBSERVATION.

Sheet 1e of 11



**CERTIFICATE**

THIS IS TO CERTIFY THAT THE ABOVE PLAT WAS PREPARED FROM  
FIELD NOTES OF ACTUAL SURVEYS MADE BY ME OR UNDER MY  
SUPERVISION AND THAT THE SAME ARE TRUE AND CORRECT TO THE  
BEST OF MY KNOWLEDGE AND BELIEF.

REGISTERED LAND SURVEYOR  
REGISTRATION NO. 17492  
STATE OF COLORADO

**UTAH ENGINEERING & LAND SURVEYING**  
85 SOUTH 200 EAST - VERNAL, UTAH 84078  
(435) 789-1017

**LEGEND:**

- = 90° SYMBOL
- = PROPOSED WELL HEAD.
- ▲ = SECTION CORNERS LOCATED.

PDOP = 2.6

NAD 83 (SURFACE LOCATION)	
LATITUDE = 39°46'02.84" (39.767456)	
LONGITUDE = 108°19'48.98" (108.330272)	
NAD 27 (SURFACE LOCATION)	
LATITUDE = 39°46'02.94" (39.767483)	
LONGITUDE = 108°19'46.67" (108.329631)	

SCALE	1" = 1000'	DATE SURVEYED:	01-22-09	DATE DRAWN:	01-29-09
PARTY	G.O. B.H. D.R.B.	REFERENCES	G.L.O. PLAT		
WEATHER	COLD	FILE	Encana Oil & Gas (USA) INC.		

T3S, R98W, 6th P.M.

5493.18' (G.L.O.)

1938 Brass Cap  
0.1' High, Pile  
of Stones  
Lat: 39.781908  
Long: 108.332417  
R 98 W 97

90°57'  
(G.L.O.)

1946'  
(Comp.)

N02°17'W - 2655.84' (G.L.O.)

N01°37'11"W - 2648.90' (Meas.)

2067'

TARGET BOTTOM HOLE  
EUREKA UNIT  
#8807B-24 D30 397

24

COC060749  
COC065568

1940 Brass Cap  
0.8' High, Pile  
of Stones  
Lat: 39.774453  
Long: 108.351594

1938 Brass Cap  
0.3' High, Pile  
of Stones  
Lat: 39.774642  
Long: 108.332153

N02°10'02"W - 2658.04' (Meas.)

1940 Brass Cap  
1.0' High, Mound  
of Stones, Steel Post  
Lat: 39.767167  
Long: 108.351239

1940 Brass Cap  
0.7' High, Mound  
of Stones, Steel Post  
Lat: 39.767283  
Long: 108.341564

S89°05'52"W - 2720.93' (Meas.)

S89°18'49"W - 2722.54' (Meas.)

N01°38'52"W - 2651.54' (Meas.)

## Encana Oil & Gas (USA) INC.

Well location, EUREKA UNIT #8807B-24 D30 397 (TARGET BOTTOM HOLE), located as shown in the SW 1/4 NE 1/4 of Section 24, T3S, R98W, 6th P.M., Rio Blanco County, Colorado.

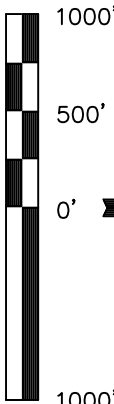
### BASIS OF ELEVATION

BENCH MARK (H79) LOCATED IN THE NE 1/4 OF SECTION 35, T4S, R98W, 6th P.M. TAKEN FROM THE BULL FORK QUADRANGLE, COLORADO, 7.5 MINUTE SERIES (TOPO GRAPHICAL MAP) PUBLISHED BY THE UNITED STATES DEPARTMENT OF THE INTERIOR, GEOLOGICAL SURVEY. SAID ELEVATION IS MARKED AS BEING 8535 FEET.

### BASIS OF BEARINGS

BASIS OF BEARINGS IS A G.P.S. OBSERVATION.

Sheet 1f of 11



SCALE

### CERTIFICATE

THIS IS TO CERTIFY THAT THE ABOVE PLAT WAS PREPARED FROM FIELD NOTES OF ACTUAL SURVEYS MADE BY ME OR UNDER MY SUPERVISION AND THAT THE SAME ARE TRUE AND CORRECT TO THE BEST OF MY KNOWLEDGE AND BELIEF.

REGISTERED LAND SURVEYOR  
REGISTRATION NO. 17492  
STATE OF COLORADO

## UTAH ENGINEERING & LAND SURVEYING

85 SOUTH 200 EAST - VERNAL, UTAH 84078

(435) 789-1017

SCALE  
1" = 1000'

DATE SURVEYED: 01-22-09 DATE DRAWN: 01-29-09

PARTY G.O. B.H. D.R.B. REFERENCES G.L.O. PLAT

WEATHER COLD FILE Encana Oil & Gas (USA) INC.

### LEGEND:

— = 90° SYMBOL

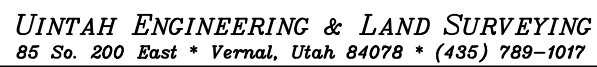
● = PROPOSED WELL HEAD.

▲ = SECTION CORNERS LOCATED.

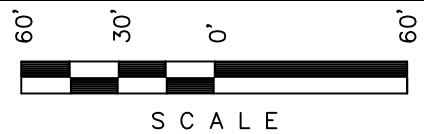
60' 30' 0' 30' 60'

SCALE

*Sheet 1q of 11*



EnCana OIL & GAS (USA) INC.  
WELL PAD INTERFERENCE PLAT  
WELL PAD D30 397  
SECTIONS 19 & 30, T3S, R97W, 6th P.M.  
Lot 4 (Sec 19) & Lot 1 (Sec 30)



SCALE

Sheet 2 of 11



SCALE: 1" = 60'  
DATE: 01-28-09  
Drawn By: D.R.B.  
Revised: 07-01-09 D.R.B.

