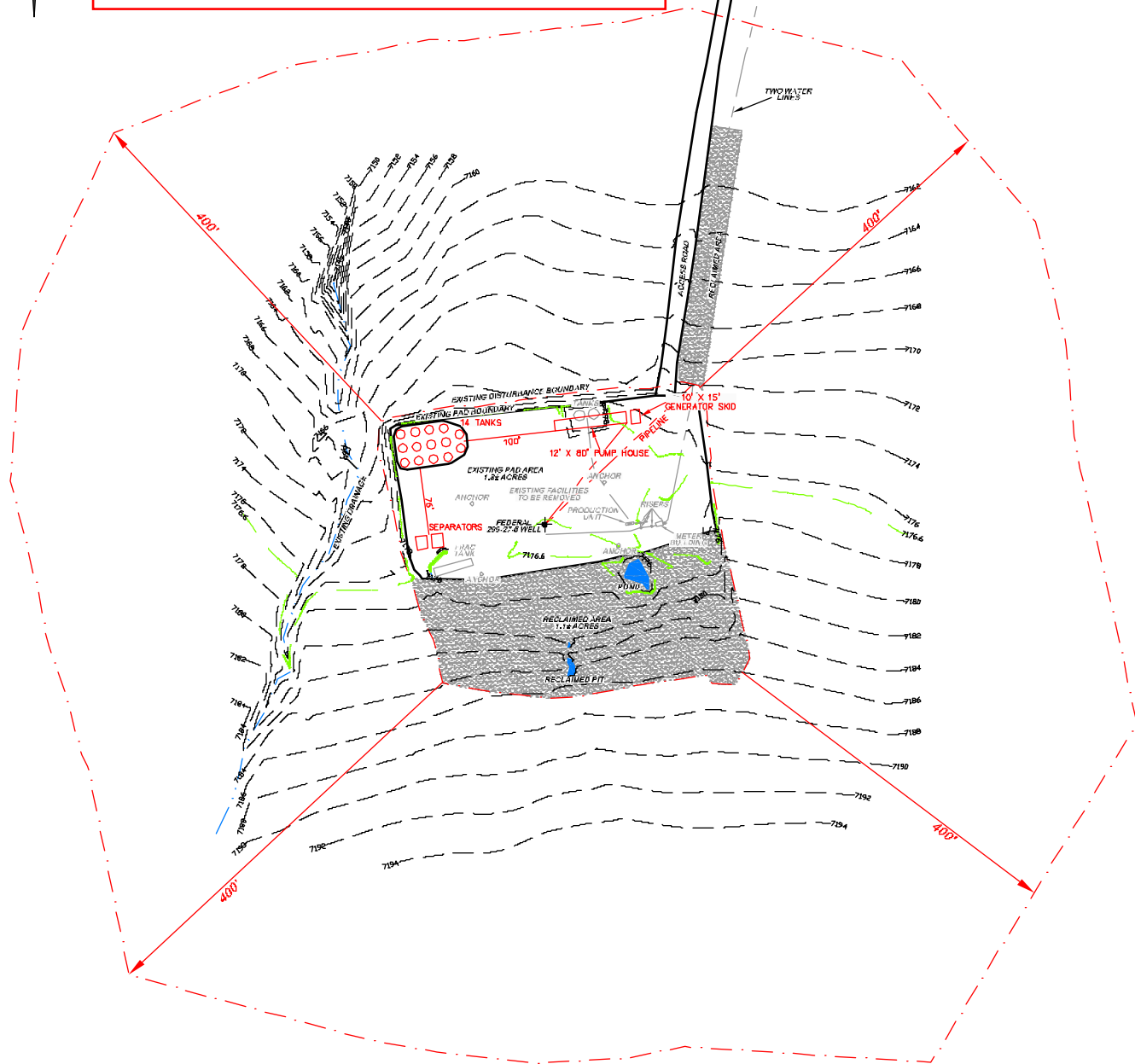


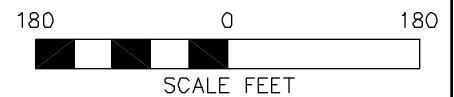
EXISTING ELEVATION: 7176.6'
TOTAL EXISTING DISTURBANCE: 2.6± ACRES

Scan No. 2032650 LAYOUT DRAWING
Form 2A #1712621 November 11, 2009



**BEFORE DIGGING
CALL FOR
UTILITY LINE LOCATION**

NOTE: THE EARTH QUANTITIES ON
THIS DRAWING ARE ESTIMATED
AND THE USE OF IS AT THE
RESPONSIBILITY OF THE USER.



FEDERAL 299-27-5 WELL



(307) 362-5028

RIFFIN & ASSOCIATES, INC.
1414 ELK ST., ROCK SPRINGS, WY 82901

DRAWN: 8/25/09 - MMM

SCALE: 1" = 180'

REVISED: 10/28/09 - MMM

DRG JOB No. 17533

ADDED PROPOSED FACILITIES

EXHIBIT 2D

LOCATION DRAWING

WILLIAMS PRODUCTION RYAN GULCH LLC.
FEDERAL 299-27-5 SWD WELL
SECTION 27, T 2 S, R 99 W

EXISTING ELEVATION: 7176.6'