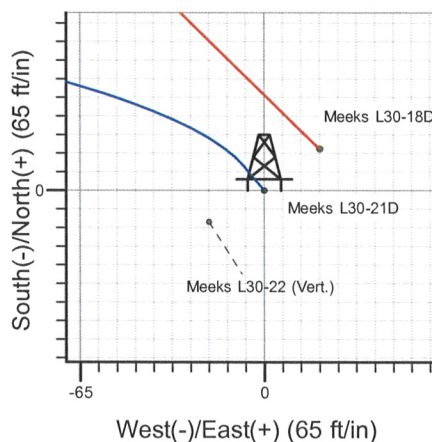
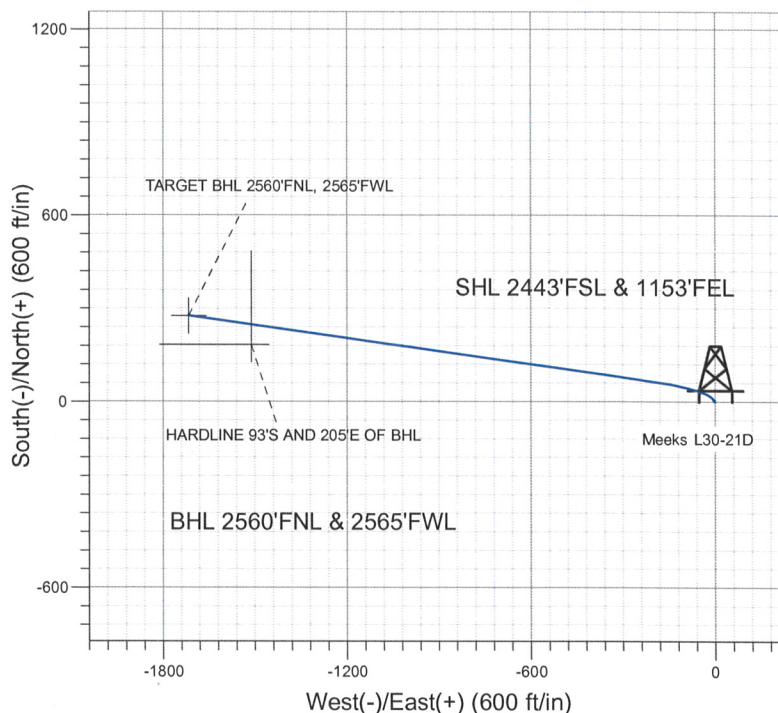
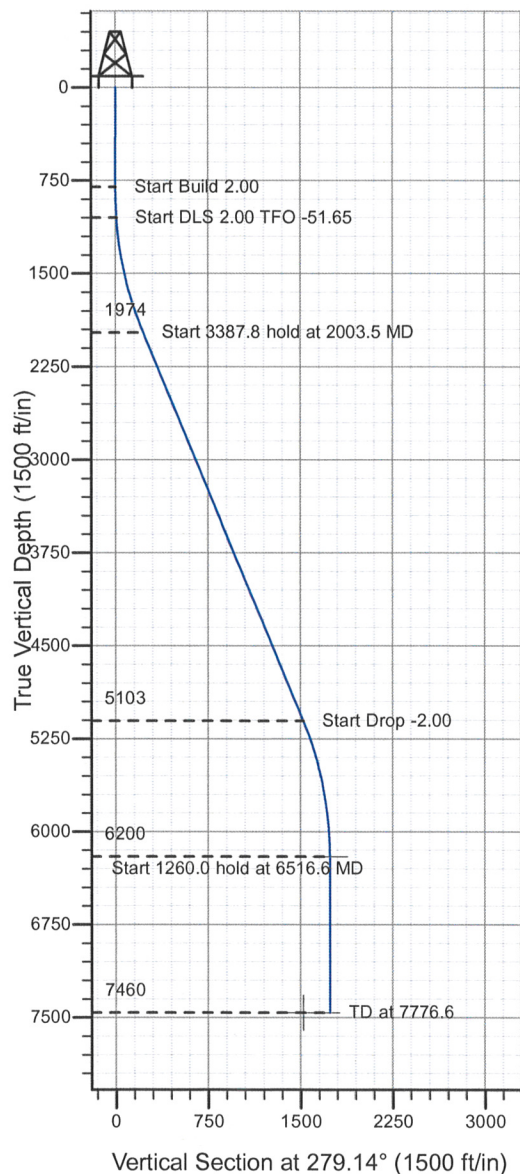


Well Name: Meeks L30-21D

Surface Location: Meeks Pad Sec.30-T3N-R66W
 North American Datum 1983 , US State Plane 1983 , Colorado Northern Zone
 Ground Elevation: 4858.0
 S+E/-W Northing Easting Latitude Longitude S
 0.0 1314639.06 3191446.62 40° 11' 42.180 N 104° 48' 52.812 W
 Original Well Elev WELL @ 4871.0ft (Original Well Elev)

Slot

NOBLE ENERGY INC WELD COUNTY CO



Meeks Pad Sec.30-T3N-R66W
Meeks L30-21D
Plan #3 (07-28-09)
9:30, July 28 2009



Azimuths to True North
Magnetic North: 9.09°

Magnetic Field
Strength: 53234.8snT
Dip Angle: 66.95°
Date: 7/28/2009
Model: IGRF200510

WELLBORE TARGET DETAILS (LAT/LONG)

Name	TVD	+N/-S	+E/-W	Latitude	Longitude	Shape
TARGET BHL 2560°FNL, 2565°FWL	6200.0	276.2	-1716.6	40° 11' 44.908 N	104° 49' 14.932 W	Point
HARDLINE 93°S AND 205°E OF BHL	7460.0	183.2	-1511.6	40° 11' 43.990 N	104° 49' 12.291 W	Polygon

SECTION DETAILS

Sec	MD	Inc	Azi	TVD	+N/-S	+E/-W	DLeg	TFace	VSec	Target
1	0.0	0.00	0.00	0.0	0.0	0.0	0.00	0.00	0.0	
2	800.0	0.00	0.00	800.0	0.0	0.0	0.00	0.00	0.0	
3	1050.0	5.00	320.00	1049.7	8.4	-7.0	2.00	320.00	8.2	
4	2003.5	22.50	277.97	1973.6	66.0	-216.4	2.00	-51.65	224.1	
5	5391.4	22.50	277.97	5103.5	245.9	-1500.5	0.00	0.00	1520.5	
6	6516.6	0.00	0.00	6200.0	276.2	-1716.6	2.00	180.00	1738.6	TARGET BHL 2560'FNL, 2565'FWL
7	7776.6	0.00	0.00	7460.0	276.2	-1716.6	0.00	0.00	1738.6	