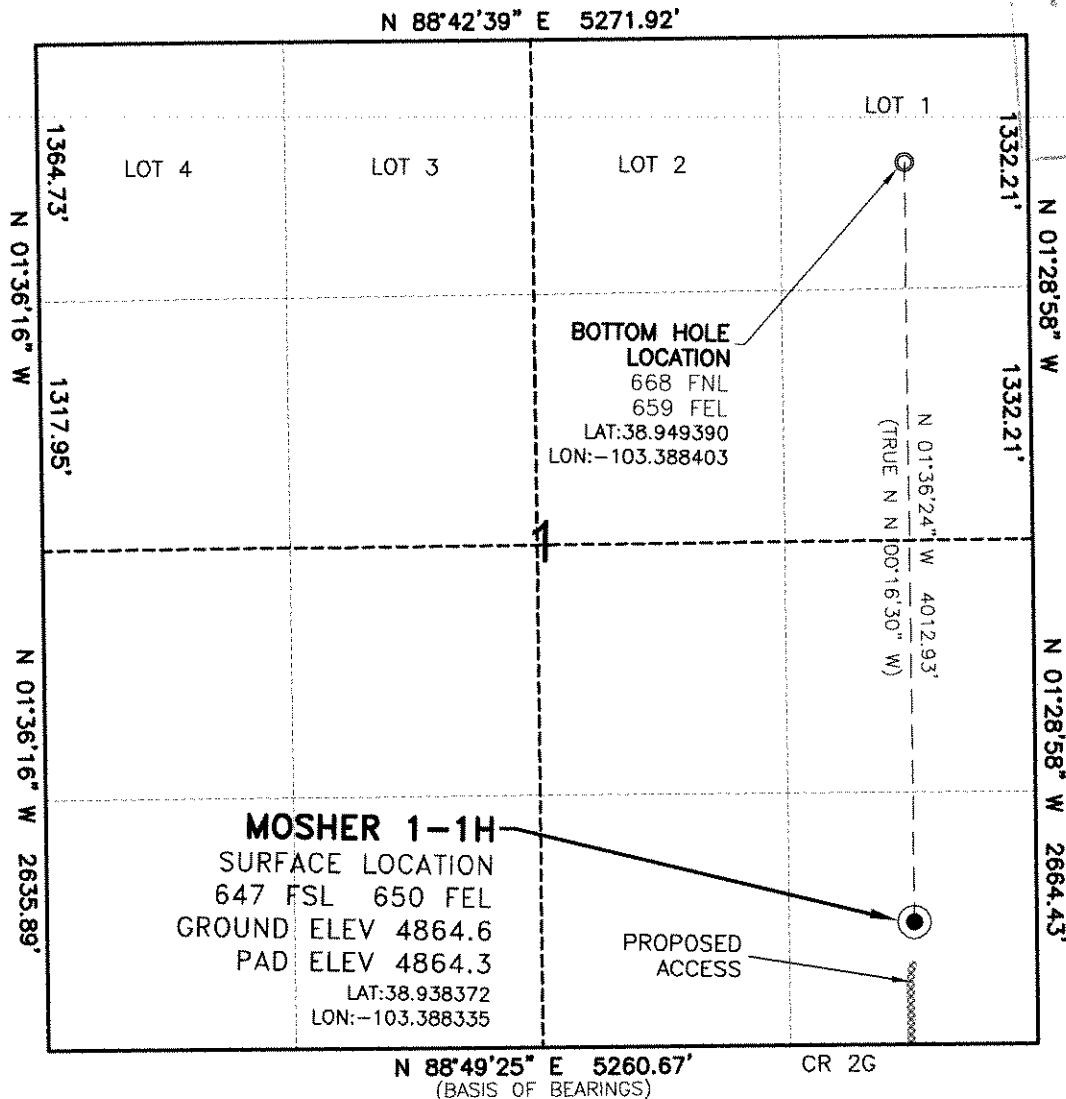




MOSHER 1-1H PAD

6/19/2009

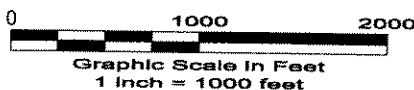
COGCC



NOTES

- 1.) Horizontal coordinates based on NGS control point "CREST" and vertical datum based on NGS control point "S84" with an elevation of 4856.99. NAVD 1988.
- 2.) All directions, distances, and dimensions shown hereon are based on coordinates from the "Colorado coordinate system of 1983 central zone" (article 52 of title 38, C.R.S.).
- 3.) All section line dimensions shown hereon are based on field measurements of existing monuments and/or physical evidence found in the field unless otherwise indicated. Refer to USGLO survey.
- 4.) Physical features shown hereon are for graphical representation only.
- 5.) See Form 2A for visible improvements within 400' of wellhead.
- 6.) Distances to nearest section lines are measured perpendicularly.
- 7.) This is not a land survey nor land survey plat.
- 8.) Date of Survey 10/2/09; Date of Drawing 10/6/09. REV 0

PDOP Reading: 2.3 Instrument Operator: GNA



NEWFIELD PRODUCTION CO.
MOSHER 1-1H

SL SE1/4 SE1/4 SEC. 1 T13S R54W
BL GOV'T LOT 1 SEC. 1 T13S R54W
6th PM LINCOLN COUNTY COLORADO

PAD LAYOUT

MOSHER 1-1H PAD

VEGETATION:
RANGELAND

PROPOSED DIRECTIONAL
ALIGNMENT MOSHER 1-1H
N 01°36'24" W 4012.93'

DAYLIGHT
LINE

RECEIVED
OCT 19 2009
COGCC

MOSHER
1-1H

STORMWATER
CONTROL DITCH

LIMIT OF
DISTURBANCE

PROPOSED
ACCESS

INSTALL 18" CMP

NOTES:

- 1) 10% ALLOWANCE IS MADE FOR SOIL EXPANSION.
- 2) PIT LOCATION & SIZE TO BE DETERMINED AT TIME OF CONSTRUCTION.

PAD 300'x400' ELEV= 4864.3

DISTURBED AREA= 3.6 ACRES

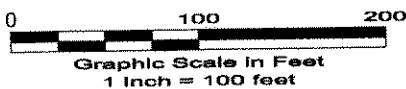
ESTIMATED DIRT QUANTITIES

CUTx10%	FILL	PIT	TOPSOIL	EXCESS
3,120	780	7,550	1,930	410

NOTE: VOLUMES IN CUBIC YARDS. TOPSOIL INCLUDED IN VOLUMES AT A DEPTH OF 6". PIT NOT INCLUDED IN TOTAL EXCESS.



North



GEO SURV

LAND SURVEYING AND MAPPING
LAFAYETTE - WINTER PARK
Ph 303 666 0379 Fx 303 665 6320

NEWFIELD PRODUCTION CO.
MOSHER 1-1H

SL SE1/4 SE1/4 SEC. 1 T13S R54W
BL GOV'T LOT 1 SEC. 1 T13S R54W
6th PM LINCOLN COUNTY COLORADO