

Antero Resources

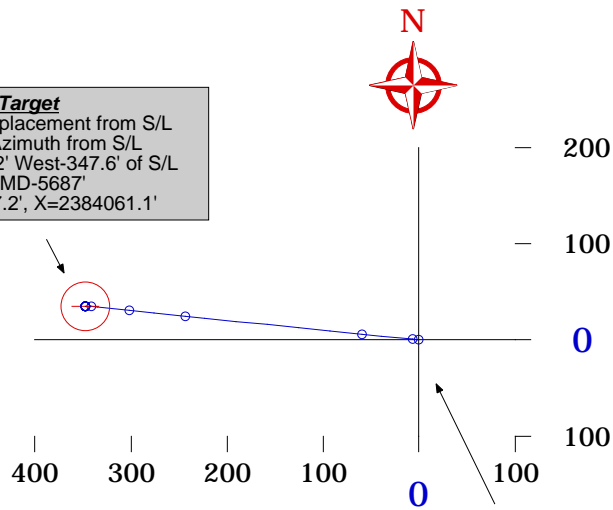
Robinson Well C9
Garfield County, CO



Horizontal Plan 1" = 200'

Proposed Target
349.39' Displacement from S/L
@ 275.8° Azimuth from S/L
North-35.32' West-347.6' of S/L
TVD-5676' MD-5687'
Y=1624337.2', X=2384061.1'

Target Area
25' Radius



Surface Location
Y=1624301.92'
X=2384408.73'
NAD 83

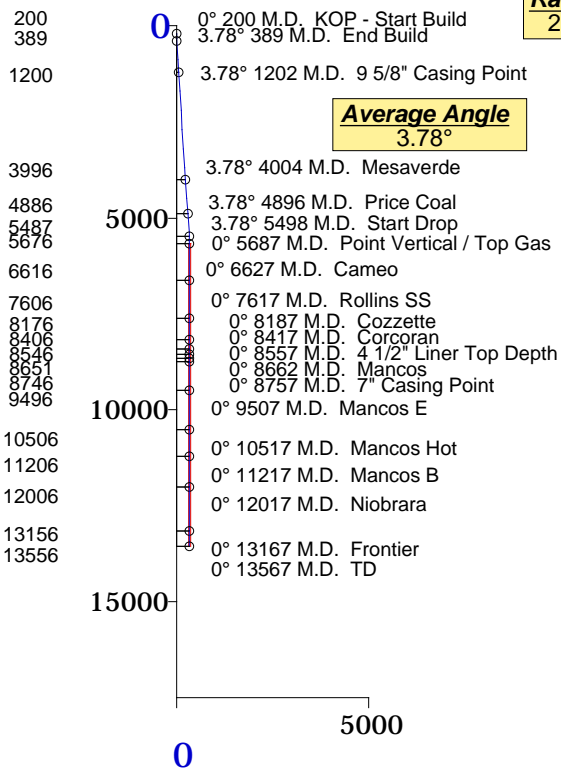
Vertical Section 1" = 5000'

Plane of Proposal
275.8° Azimuth

Rate of Build
2°/100'MD

Average Angle
3.78°

Rate of Drop
2°/100'MD



Formation	TVD
9 5/8" Casing	1200
Mesaverde	3996
Price Coal	4886
Top Gas	5676
Cameo	6616
Rollins SS	7606
Cozzette	8176
Corcoran	8406
4 1/2" Liner Top	8546
Mancos	8651
7" Casing	8746
Mancos E	9496
Mancos Hot	10506
Mancos B	11206
Niobrara	12006
Frontier	13156
TD	13556



01-15-2009

Measured Depth Feet	BORE Inc Degrees	HOLE Direction Degrees	True Vertical Depth Feet	RECTANGULAR COORDINATES		LAMBERT COORDINATES		Vertical Section Feet	CLOSURES		Dogleg Severity Deg/100'
				North(-South)	East(-West)	Y	X		Distance	Direction	
				Feet	Feet	Feet	Feet		Feet	Deg	
200.00	0.00	0.00	200.00	0.00	0.00	1624301.9	2384408.7	0.00	0.00	0.00	0.00
KOP - Start Build											
300.00	2.00	275.80	299.98	0.18	-1.74	1624302.1	2384407.0	1.75	1.75	275.80	2.00
389.07	3.78	275.80	388.93	0.63	-6.20	1624302.5	2384402.5	6.24	6.24	275.80	2.00
End Build											
889.07	3.78	275.80	887.85	3.96	-39.01	1624305.9	2384369.7	39.21	39.21	275.80	0.00
1201.91	3.78	275.80	1200.00	6.05	-59.53	1624308.0	2384349.2	59.84	59.84	275.80	0.00
9 5/8" Casing Point											
1701.91	3.78	275.80	1698.91	9.38	-92.33	1624311.3	2384316.4	92.81	92.81	275.80	0.00
2201.91	3.78	275.80	2197.82	12.72	-125.14	1624314.6	2384283.6	125.78	125.78	275.80	0.00
2701.91	3.78	275.80	2696.74	16.05	-157.94	1624318.0	2384250.8	158.75	158.75	275.80	0.00
3201.91	3.78	275.80	3195.65	19.38	-190.74	1624321.3	2384218.0	191.72	191.72	275.80	0.00
3701.91	3.78	275.80	3694.56	22.71	-223.54	1624324.6	2384185.2	224.69	224.69	275.80	0.00
4004.01	3.78	275.80	3996.00	24.73	-243.36	1624326.6	2384165.4	244.62	244.62	275.80	0.00
Mesaverde											
4504.01	3.78	275.80	4494.91	28.06	-276.17	1624330.0	2384132.6	277.59	277.59	275.80	0.00
4895.95	3.78	275.80	4886.00	30.67	-301.88	1624332.6	2384106.9	303.43	303.43	275.80	0.00
Price Coal											
5395.95	3.78	275.80	5384.91	34.01	-334.68	1624335.9	2384074.1	336.41	336.41	275.80	0.00
5498.35	3.78	275.80	5487.09	34.69	-341.40	1624336.6	2384067.3	343.16	343.16	275.80	0.00
Start Drop											
5598.35	1.78	275.80	5586.97	35.18	-346.23	1624337.1	2384062.5	348.01	348.01	275.80	2.00
5687.42	0.00	275.80	5676.03	35.32	-347.60	1624337.2	2384061.1	349.39	349.39	275.80	2.00
Point Vertical / Top Gas											
6627.40	0.00	275.80	6616.00	35.32	-347.60	1624337.2	2384061.1	349.39	349.39	275.80	0.00
Cameo											
7617.40	0.00	275.80	7606.00	35.32	-347.60	1624337.2	2384061.1	349.39	349.39	275.80	0.00
Rollins SS											

[illegible]