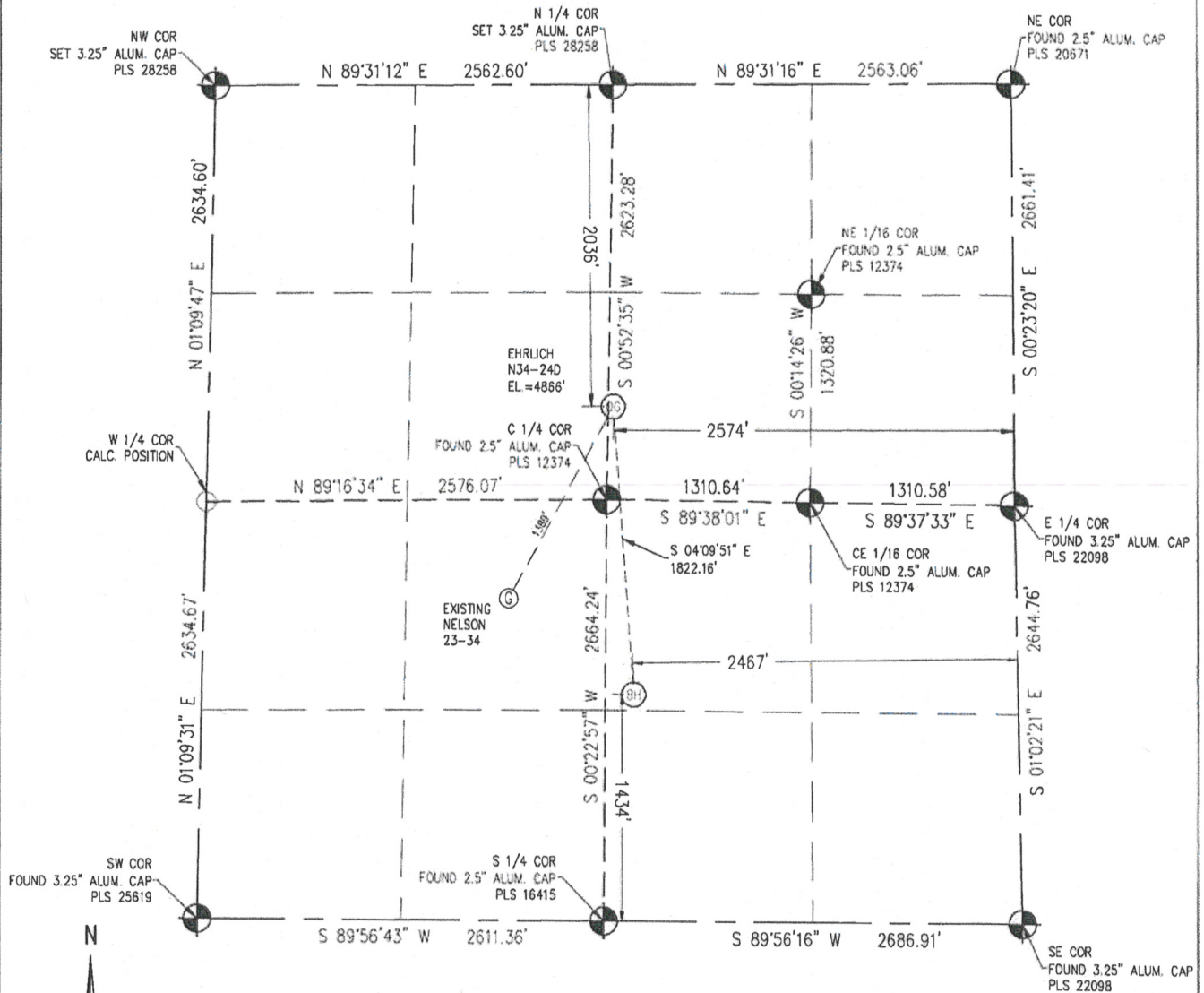


Baseline Engineering Corp. 710 11th Avenue Suite 105 Greeley, Colorado 80631

# WELL LOCATION CERTIFICATE

THIS MAP DOES NOT REPRESENT A BOUNDARY SURVEY

SECTION 34  
TOWNSHIP 5 NORTH  
RANGE 67 WEST



IN ACCORDANCE WITH A REQUEST FROM JOE MARTIN - NOBLE ENERGY INC, BASELINE ENGINEERING CORP. HAS DETERMINED THE LOCATION OF THE EHRLICH N34-240 TO BE 2036' FNL, 2574' FEL, AS MEASURED AT NINETY (90) DEGREES FROM THE SECTION LINE OF SECTION 34, TOWNSHIP 5 NORTH, RANGE 67 WEST AND THE BOTTOM HOLE LOCATION TO BE 1434' FSL AND 2467' FEL OF SECTION 34, TOWNSHIP 5 NORTH, RANGE 67 WEST, 6TH PRINCIPAL MERIDIAN, WELD COUNTY, COLORADO

I HEREBY CERTIFY THAT THIS WELL LOCATION CERTIFICATE WAS PREPARED BY ME, OR UNDER MY DIRECT SUPERVISION, THAT THE FIELD WORK WAS COMPLETED ON 02/06/2009, THAT IT IS NOT A LAND SURVEY PLAT OR AN IMPROVEMENT SURVEY PLAT, AND THAT IT IS NOT TO BE RELIED UPON FOR ESTABLISHMENT OF FENCE, BUILDING, OR OTHER FUTURE IMPROVEMENT LINES

## NOTES:

- 1) LAT/LONG SHOWN ARE BASED ON A GPS OBSERVATION (NAD83).
- 2) BEARINGS SHOWN ARE GRID BEARINGS OF THE COLORADO STATE PLANE COORDINATE SYSTEM, NORTH ZONE, NORTH AMERICAN DATUM 1983/2007
- 3) GROUND ELEVATIONS ARE BASED ON A GPS OBSERVATION (NAVD 88 DATUM)
- 4) ALL DISTANCES SHOWN ARE FIELD MEASURED UNLESS OTHERWISE NOTED.
- 5) THE NEAREST EXISTING WELL IS: NELSON 23-34 1389' SOUTHWEST
- 6) IMPROVEMENTS: SEE VISIBLE IMPROVEMENTS EXHIBIT FOR ALL VISIBLE IMPROVEMENTS WITHIN 400' OF WELL HEAD.
- 7) SURFACE USE: HAY FIELD

NOTICE: According to Colorado law you MUST commence any legal action based upon any defect in this WLC within three years after you first discover such defect. In no event may any action based upon any defect in this WLC be commenced more than ten years from this said date of the certification shown hereon.

## LATITUDE & LONGITUDE (NAD 83 SURFACE HOLE):

LATITUDE: 40.357835° N  
LONGITUDE: 104.879020° W  
POOP: 2.2  
1/4, 1/4: SW 1/4 NE 1/4  
NEAREST PROPERTY LINE: 237' N  
BOTTOM HOLE:  
LATITUDE: 40.352845° N  
LONGITUDE: 104.878591° W

## LEGEND

- ALLOTMENT MONUMENT AS DESCRIBED
- CALCULATED SURVEY MONUMENT POSITION
- CALCULATED DIMENSION



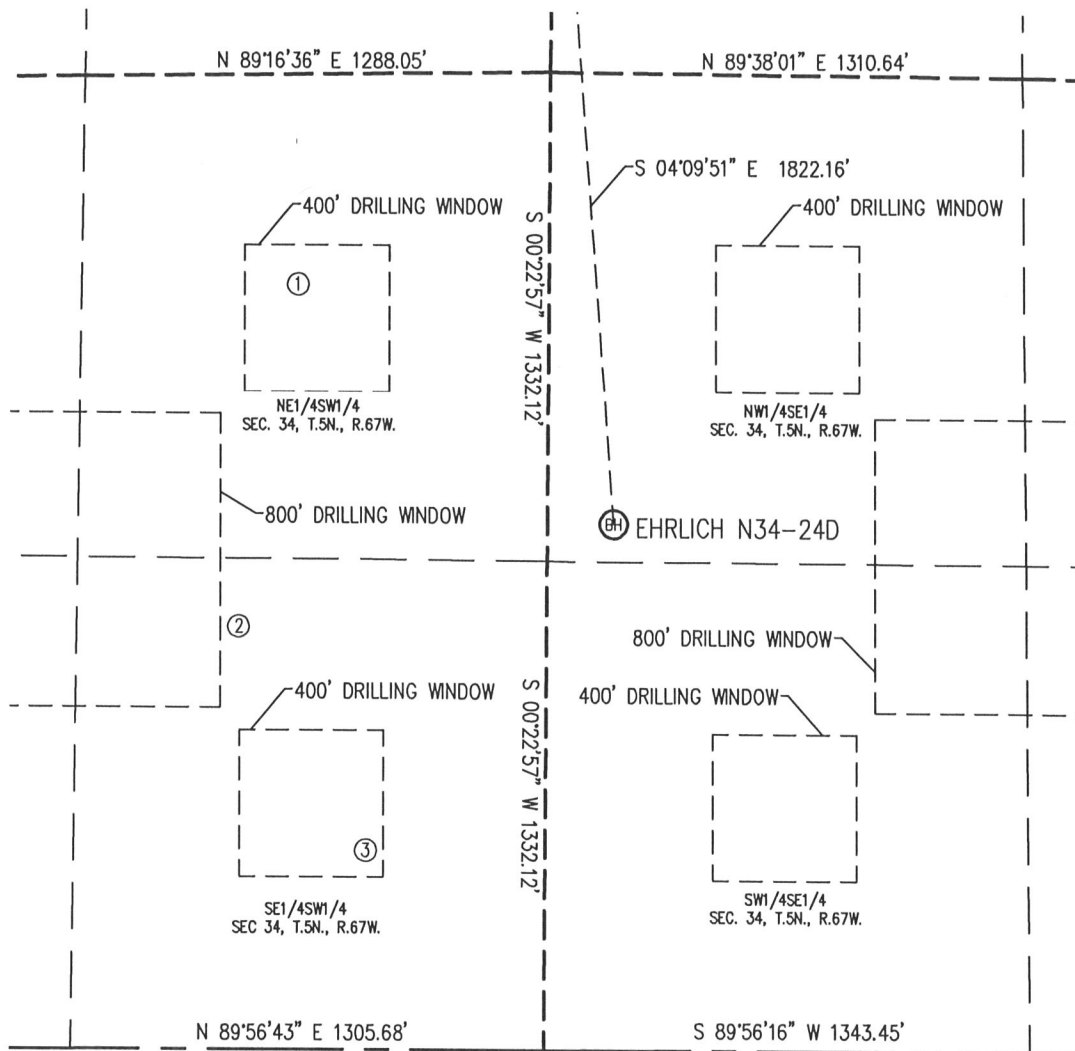
John C. Barickman  
Professional Land Surveyor Registration No. 28258  
State of Colorado  
FOR AND ON BEHALF OF BASELINE ENGINEERING CORP

Completed  
5/8/2009

JOB # N085N67W34-01

# SITE SKETCH

SECTION 34  
TOWNSHIP 5 NORTH  
RANGE 67 WEST



①

NELSON 23-34  
NE/SW  
ELEV: 4822'  
1958' FWL  
2037' FSL  
LAT: 40.354513° N  
LONG: 104.881464° W  
PDOP 2.1

②

NELSON 34-42  
SE/SW  
ELEV: 4759'  
1773' FWL  
1080' FSL  
LAT: 40.351890° N  
LONG: 104.882222° W  
PDOP 2.3

③

NELSON 24-34  
SE/SW  
ELEV: 4753'  
2145' FWL  
464' FSL  
LAT: 40.350194° N  
LONG: 104.880946° W  
PDOP 1.5

## NOTES:

- 1) THIS SKETCH DOES NOT REPRESENT A BOUNDARY SURVEY.
- 2) THE DATUM FOR THE LATITUDES AND LONGITUDES ON THIS SKETCH IS NAD83.

