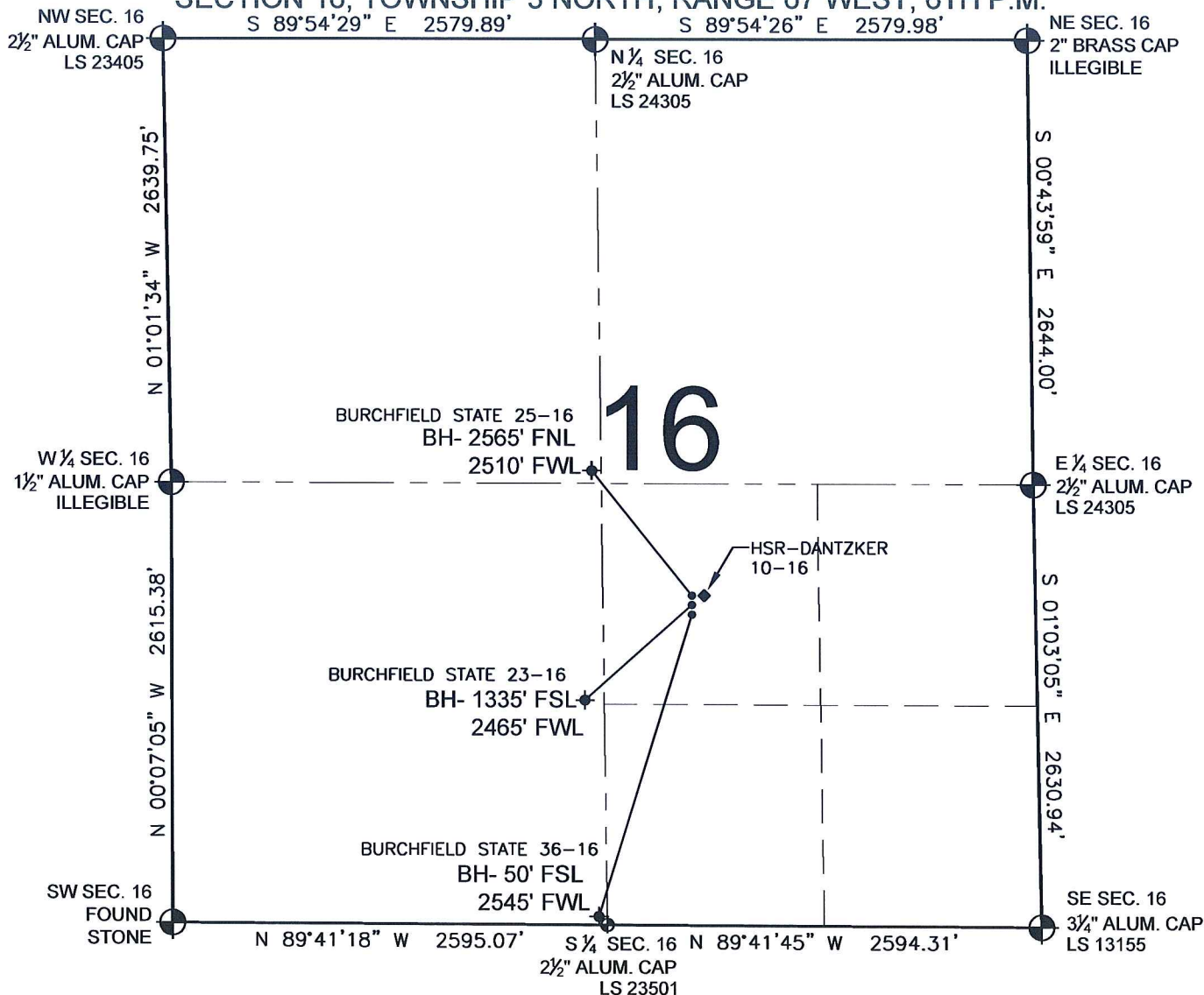


# PAD DRAWING - BURCHFIELD STATE 3 PAD

SECTION 16, TOWNSHIP 3 NORTH, RANGE 67 WEST, 6TH P.M.



## NOTES:

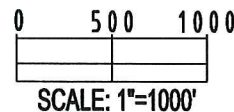
1. THIS SURVEY WAS DONE BY GPS METHODS AND CONFORMS TO THE MINIMUM STANDARDS SET BY THE C.O.G.C.C., RULE NO. 215
2. ELEVATIONS SHOWN AT THE WELL HEAD, AS WELL AS HORIZONTAL CONTROL, ARE BASED ON GPS-RTK VALUES DERIVED FROM DOING 2-HOUR STATIC GPS SESSIONS AND REDUCTIONS USING O.P.U.S. SOLUTIONS.  
VERTICAL = NAVD88; HORIZONTAL = NAD83/92
3. THE BEARINGS SHOWN HEREON ARE BASED ON GPS OBSERVATIONS BETWEEN THE MONUMENTS SHOWN HEREON AS FOUND ON THE FIELD DATE BELOW.
4. DISTANCES SHOWN ARE AT GROUND LEVEL, AS MEASURED IN THE FIELD, WITH TIES TO WELLS MEASURED AT A PERPENDICULAR TO SECTION LINES.

## LEGEND

- = EXISTING MONUMENT   
 = BOTTOM HOLE   
 BH= BOTTOM HOLE  
 = PROPOSED WELL   
 = EXISTING WELL

## NOTES:

BURCHFIELD STATE 36-16 TO BE AT 1928' FSL, 2052' FEL.  
 BOTTOM HOLE AT 50' FSL & 2545' FWL.  
 BURCHFIELD STATE 23-16 TO BE AT 1944' FSL, 2052' FEL.  
 BOTTOM HOLE AT 1335' FSL & 2465' FWL.  
 BURCHFIELD STATE 25-16 TO BE AT 1960' FSL, 2052' FEL.  
 BOTTOM HOLE AT 2565' FNL & 2510' FWL.  
 HSR-DANTZKER 10-16 IS 1960' FSL, 2003' FEL.



## REVISIONS

INITIAL	DATE
SMF	09-01-09

PREPARED BY:

**PFS**

Petroleum Field Services, LLC  
1801 W. 13th Ave.  
Denver, CO 80204



KERR-MCGEE OIL & GAS ONSHORE LP

FIELD DATE:  
08-13-09

DRAWING DATE:  
08-18-09

BY:  
SMF

PAD NAME:  
BURCHFIELD STATE 3 PAD

SURFACE LOCATION:

WELD COUNTY, COLORADO  
NW 1/4 SE 1/4, SEC. 16, T3N, R67W