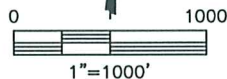
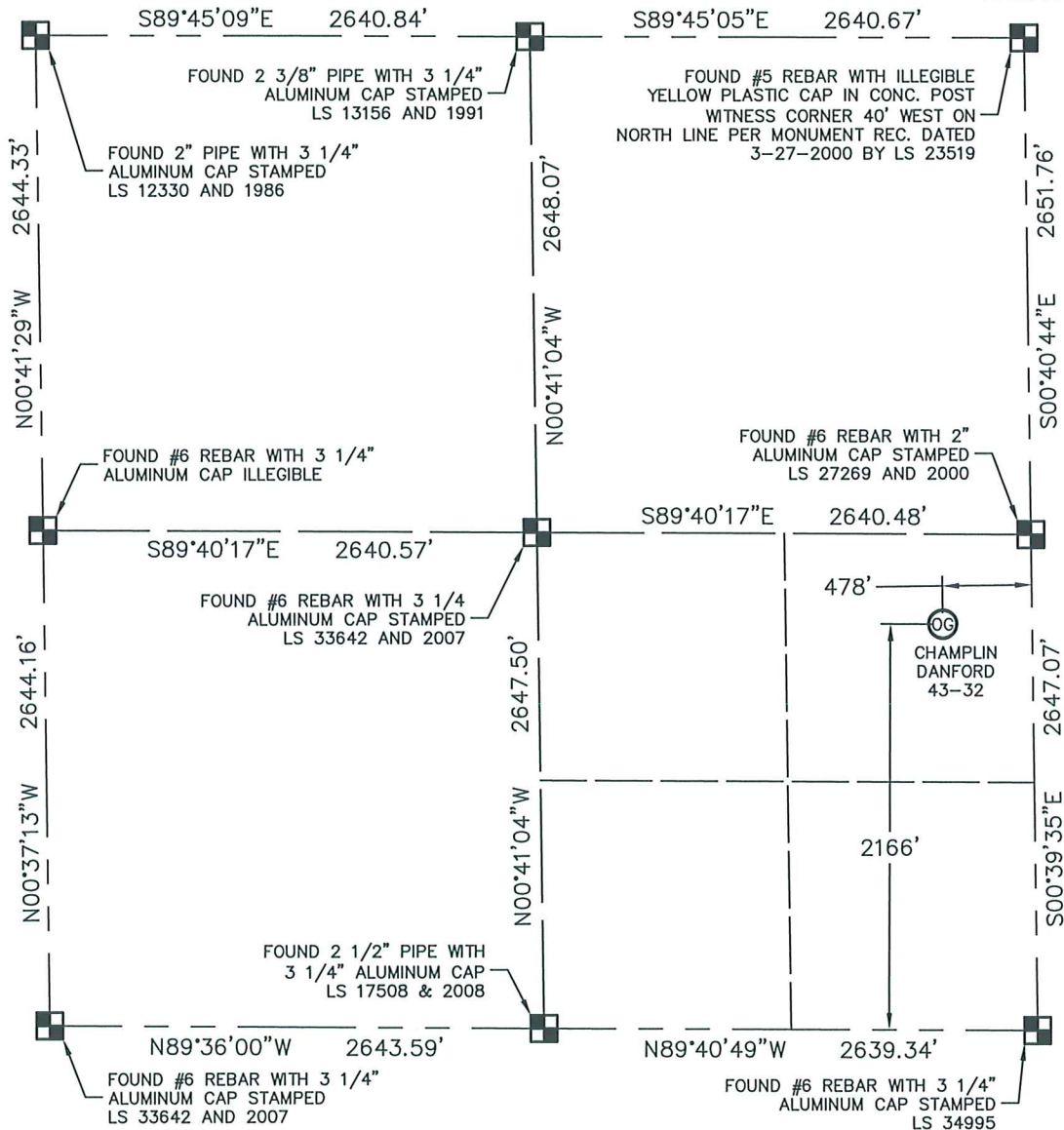


## WELL LOCATION CERTIFICATE

THIS MAP DOES NOT REPRESENT A BOUNDARY SURVEY

SECTION: 32  
TOWNSHIP: 2S  
RANGE: 64W

In accordance with a request from Melissa Lasley with TEXAS AMERICAN RESOURCES CO. King Surveyors Inc. has determined the surface location of the Champlin-Danford 43-32 to be 478' from the East line and 2166' from the South line as measured at right angles from the section lines of Section 32, Township 2 South, Range 64 West of the Sixth Principal Meridian, County of Adams, State of Colorado.

NEAREST:  
BUILDING— NONE WITHIN 1000'  
PUBLIC ROAD— 490' EAST, @ 10' DIRT ROAD  
QUAIL RUN MILE ROAD  
ABOVE GROUND UTILITY— NONE WITHIN 1000'  
RAILROAD— NONE WITHIN 1000'

I hereby state that this Well Location Certificate was prepared by me, or under my direct supervision, that the fieldwork was completed on 06/17/2009, for and on behalf of TEXAS AMERICAN RESOURCES CO. That this is not a Land Survey Plat or an Improvement Survey Plat, and that it is not to be relied upon for establishment of fence, building, or other future improvement lines.

## NOTE:

- 1) Bearings shown are Grid Bearings of the Colorado State Plane Coordinate System, North Zone, North American Datum 1983/2007. The lineal dimensions as contained herein are based upon the "U.S. Survey Foot."
- 2) Ground elevations are based on an observed GPS elevation (NAVD 1988 DATUM).
- 3) IMPROVEMENTS: No visible improvements within 400' of well head.
- 4) SURFACE USE: CROP FIELD

SURFACE LOCATION  
LATITUDE: 39.83212°N  
LONGITUDE: 104.56625°W  
PDOP: 1.9  
ELEV: 5406'  
1/4, 1/4: NE1/4SE1/4  
NEAREST PROPERTY LINE: 478' EAST

## NOTE

According to Colorado law, you must commence any legal action based upon any defect in this W.L.C. within three years after you discover such defect. In no event, may any action based upon any defect in this survey be commenced more than ten years after the date of the certificate shown hereon. (13-80-105 C.R.S.)

## LEGEND

- = ALIQUOT MONUMENT AS DESCRIBED  
○ = CALCULATED POSITION

Steven A. Lund, On behalf of King Surveyors, Inc.  
Licensed Land Surveyor No. 34995  
State of Colorado

PROJECT#: 2009195