

ce use of the area is an
ng well pad. Surrounding
of use is grazing. Vegetation
sts mainly of sage brush,
rsh and native grasses.

Addendum		Scale: 1" = 70'	SHEET 1f OF 10
Project No.	07-04-106	Date Surveyed: 9/27/07	
Date Drawn:	12/06/07	Latest Revision Date: 11/03/09	

EnCana Oil & Gas (USA) Inc.

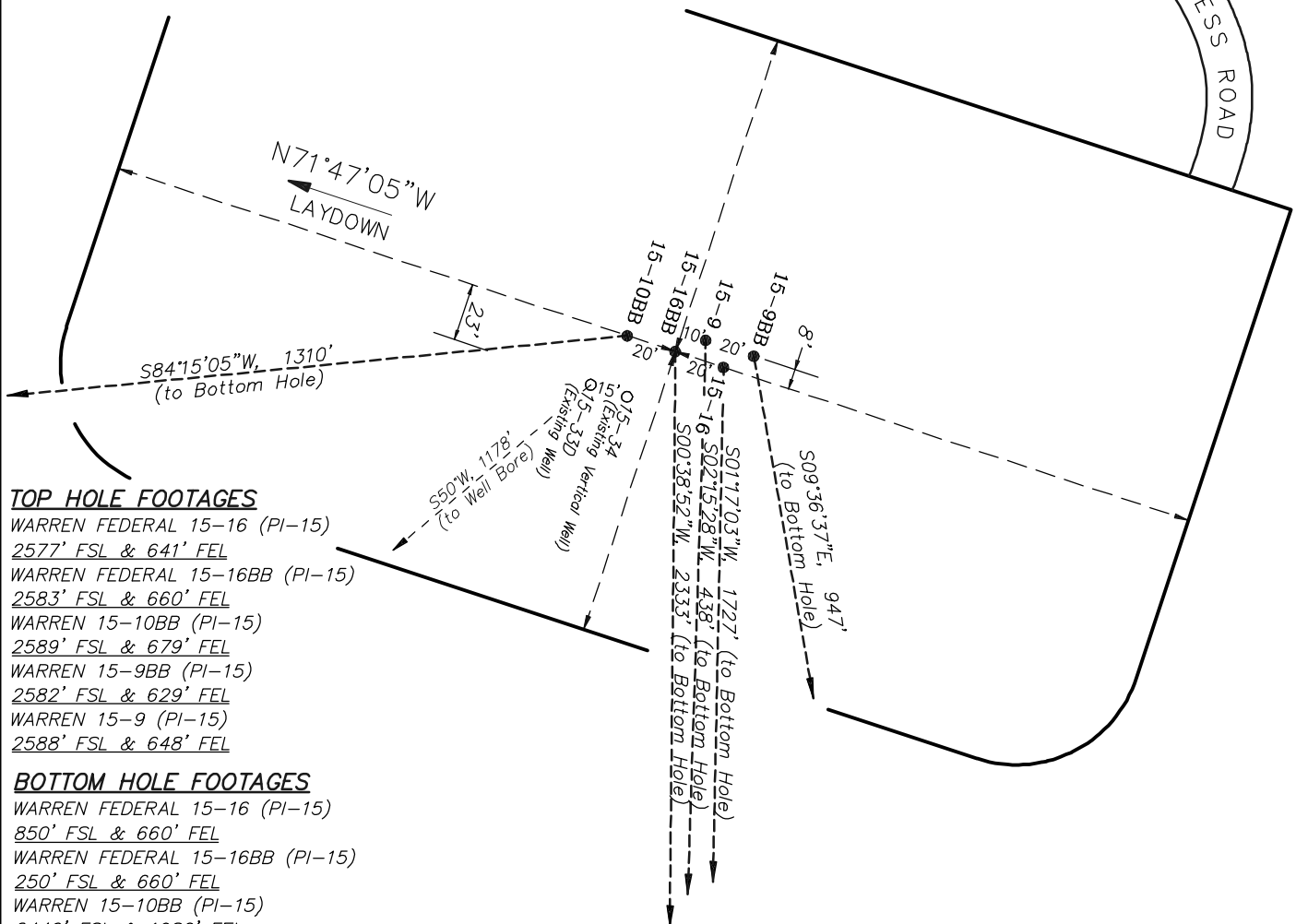
Well Pad PI-15

Section 15, T7S, R95W, 6th P.M.

WELL PAD INTERFERENCE PLAT

LATITUDE & LONGITUDE Surface position of Wellheads (NAD 83)		
WELL	LATITUDE	LONGITUDE
15-16	39.43725°	107.97659°
15-16BB	39.43727°	107.97666°
15-10BB	39.43728°	107.97673°
15-9BB	39.43726°	107.97655°
15-9	39.43728°	107.97662°

RELATIVE COORDINATES From top hole to bottom hole		
WELL	NORTH	EAST
15-16	-1727	-39
15-16BB	-2333	-26
15-10BB	-131	-1303
15-9BB	-934	158
15-9	-438	-17

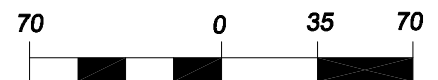


TOP HOLE FOOTAGES

WARREN FEDERAL 15-16 (PI-15)
 2577' FSL & 641' FEL
 WARREN FEDERAL 15-16BB (PI-15)
 2583' FSL & 660' FEL
 WARREN 15-10BB (PI-15)
 2589' FSL & 679' FEL
 WARREN 15-9BB (PI-15)
 2582' FSL & 629' FEL
 WARREN 15-9 (PI-15)
 2588' FSL & 648' FEL

BOTTOM HOLE FOOTAGES

WARREN FEDERAL 15-16 (PI-15)
 850' FSL & 660' FEL
 WARREN FEDERAL 15-16BB (PI-15)
 250' FSL & 660' FEL
 WARREN 15-10BB (PI-15)
 2440' FSL & 1980' FEL
 WARREN 15-9BB (PI-15)
 1650' FSL & 460' FEL
 WARREN 15-9 (PI-15)
 2150' FSL & 660' FEL



(SCALE IN FEET)



906 Main Street
 Evanston, Wyoming 82930
 Phone No. (307) 789-4545

Interference Plat		Scale: 1" = 70'	SHEET 2 OF 10
Project No.	07-04-106	Date Surveyed: 9/27/07	
Date Drawn: 12/06/07		Latest Revision Date: 11/03/09	