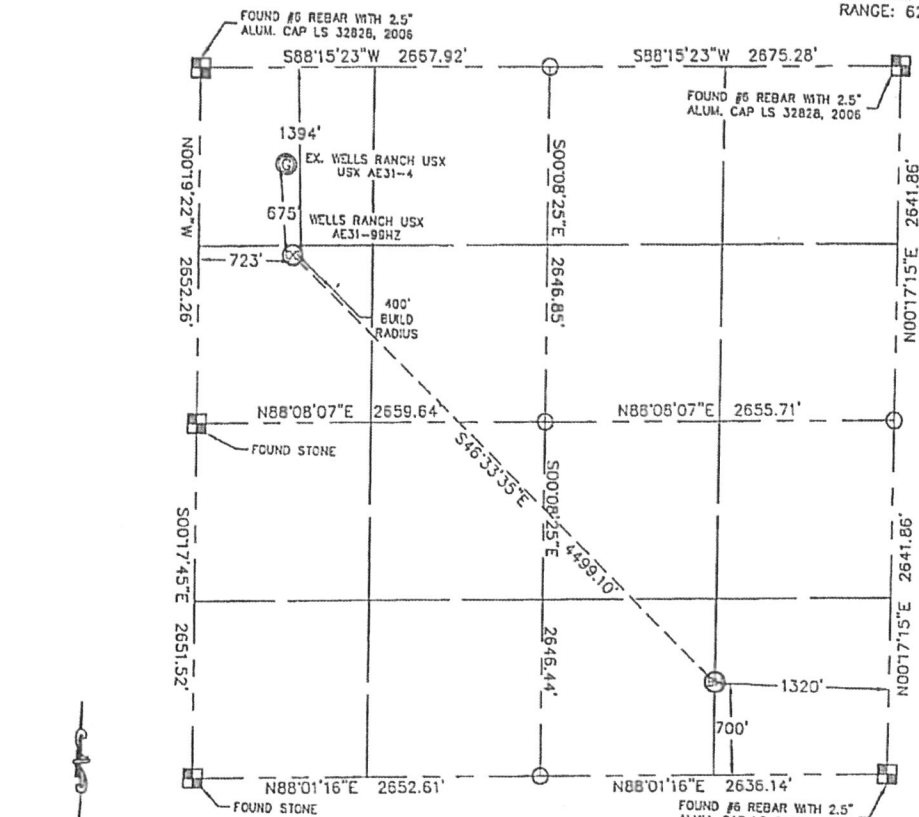


KING SURVEYORS, INC. 650 E. GARDEN DR. WINDSOR, CO 80550
WELL LOCATION CERTIFICATE
 THIS MAP DOES NOT REPRESENT A BOUNDARY SURVEY

SECTION: 31
 TOWNSHIP: 6N
 RANGE: 62W



In accordance with a request from Sean Casner with Noble Energy Inc., King Surveyors Inc. has determined the surface location of the WELLS RANCH USX AE31-99HZ to be 1394' from the NORTH line and 723' from the WEST line and the bottom hole to be 1015' from the SOUTH line and 2350' from the EAST line as measured at right angles from the section line of Section 31, Township 6 North, Range 62 West of the Sixth Principal Meridian, County of Weld, State of Colorado. I hereby state that this Well Location Certificate was prepared by me, or under my direct supervision, that the fieldwork was completed on 6/8/09, for and on behalf of Noble Energy Inc. That this is not a Land Survey Plot or an Improvement Survey Plot, and that it is not to be relied upon for establishment of fence, building, or other future improvement lines.

NOTE:

- 1) Bearings shown are Grid Bearings of the Colorado State Plane Coordinate System, North Zone, North American Datum 1983/2007. The lineal dimensions as contained herein are based upon the "U.S. Survey Foot."
- 2) Ground elevations are based on an observed GPS elevation (NAVD 1988 DATUM).
- 3) NEAREST EXISTING WELL: WELLS RANCH USX AE31-4 675'
- 4) IMPROVEMENTS: See VISIBLE IMPROVEMENTS exhibit for all visible improvements within 400' of well head.
- 5) SURFACE USE: PASTURE

NOTE

According to Colorado law, you must commence any legal action based upon any defect in this W.L.C. within three years after you discover such defect. In no event, may any action based upon any defect in this survey be commenced more than ten years after the date of the certificate shown hereon. (13-80-105 C.R.S.)

LEGEND

- = ALIQUOT MONUMENT AS DESCRIBED
- = CALCULATED POSITION

SURFACE LOCATION
 LATITUDE: 40.446367N
 LONGITUDE: 104.373167W
 PDOP: 1.42
 ELEV: 4694
 1/4, 1/4: SW1/4NW1/4
 NEAREST BOUNDARY LINE: 723' WEST

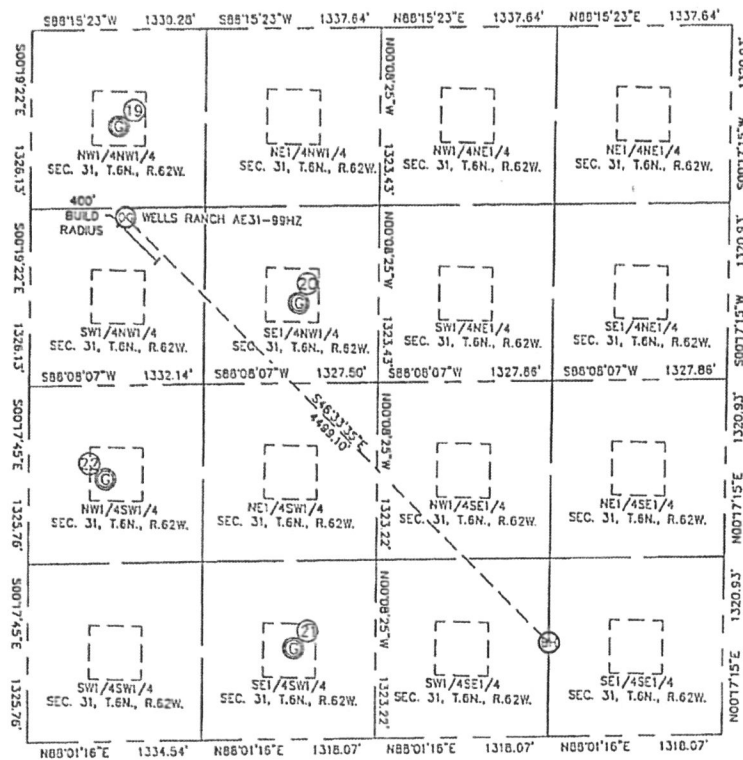
BOTTOM HOLE
 LATITUDE: 40.437767N
 LONGITUDE: 104.361577W

Stevens A. Longoria, Registered Professional Land Surveyor, No. 134995, State of Colorado, acting on behalf of King Surveyors, Inc.

PROJECT#: 2009143

KING SURVEYORS, INC. 650 E. GARDEN DR. WINDSOR, CO 80550
SITE SKETCH

SECTION: 31
TOWNSHIP: 6N
RANGE: 62W



19

WELLS RANCH USX AE31-4
NW1/4NW1/4
720' FSL
665' FWL
LAT-40.44821N
LONG-104.37335W
PDOP:1.8
ELEV:4687

20

WELLS RANCH USX AE31-6
SE1/4NW1/4
2045' FSL
2047' FWL
LAT-40.44464N
LONG-104.36642W
PDOP:1.5
ELEV:4700

21

WELLS RANCH USX AE31-14
SE1/4NW1/4
680' FSL
2024' FWL
LAT-40.43759N
LONG-104.36857W
PDOP:1.2
ELEV:4677

22

WELLS RANCH USX AE31-12
NW1/4SW1/4
1950' FSL
583' FWL
LAT-40.44099N
LONG-104.37371W
PDOP:2.8
ELEV:4684