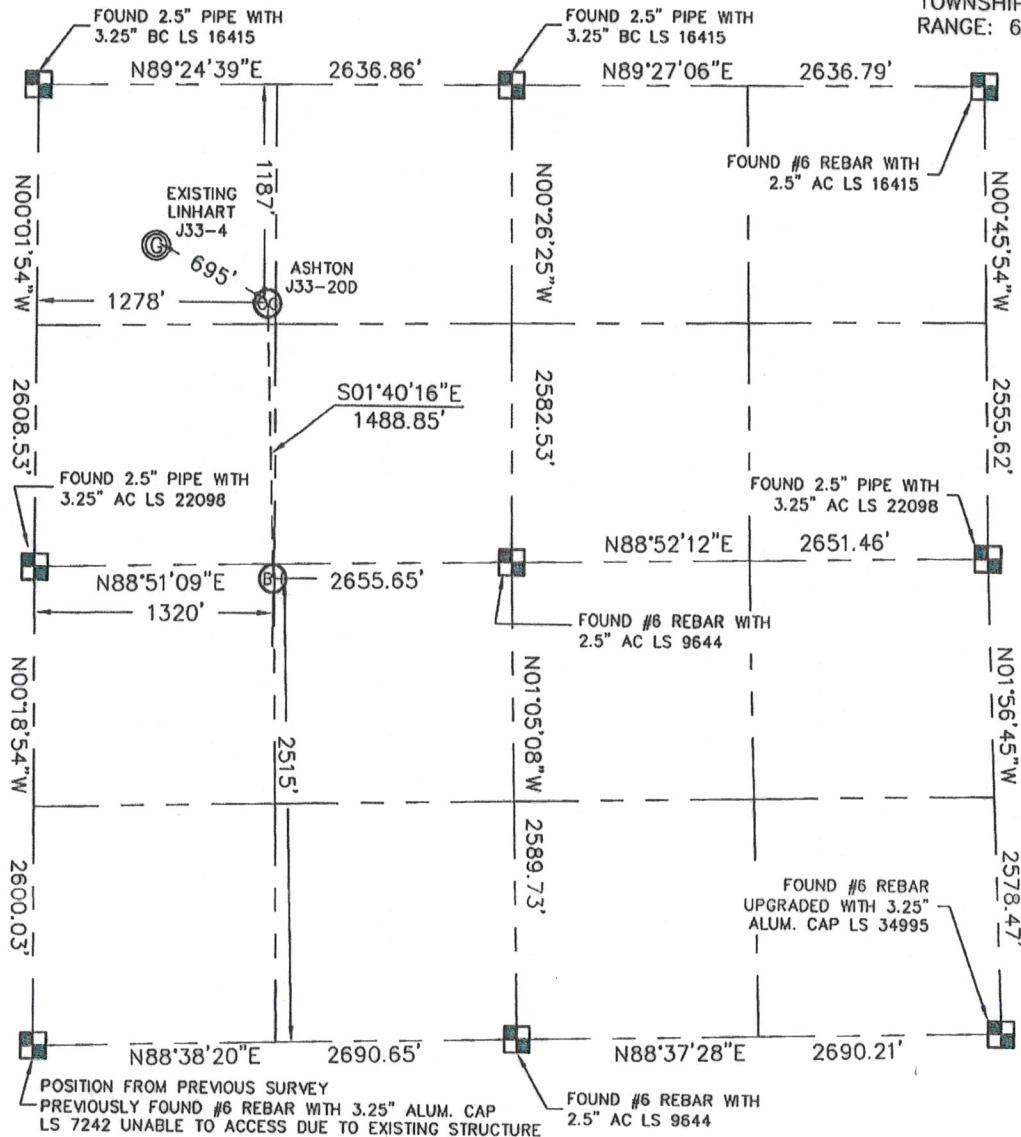


KING SURVEYORS, INC. 650 GARDEN DR. WINDSOR, CO 80550

WELL LOCATION CERTIFICATE

THIS MAP DOES NOT REPRESENT A BOUNDARY SURVEY

SECTION: 33
TOWNSHIP: 5N
RANGE: 66W



In accordance with a request from Drew Hetherington with Noble Energy Inc., King Surveyors Inc. has determined the surface location of the ASHTON J33-200 to be 1187' from the NORTH line and 1278' from the WEST line and the bottom hole to be 2515' from the SOUTH line and 1320' from the WEST line as measured at right angles from the section line of Section 33, Township 5 North, Range 66 West of the Sixth Principal Meridian, County of Weld, State of Colorado. I hereby state that this Well Location Certificate was prepared by me, or under my direct supervision, that the fieldwork was completed on 6/4/2009, for and on behalf of Noble Energy Inc. That this is not a Land Survey Plat or an Improvement Survey Plat, and that it is not to be relied upon for establishment of fence, building, or other future improvement lines.

NOTE:

- 1) Bearings shown are Grid Bearings of the Colorado State Plane Coordinate System, North Zone, North American Datum 1983/92.
- 2) Ground elevations are based on an observed GPS elevation (NAVD 1988 DATUM).
- 3) NEAREST EXISTING WELL: LINHART J33-4 695'
- 4) IMPROVEMENTS: See VISIBLE IMPROVEMENTS exhibit for all improvements within 400' of well head
- 5) SURFACE USE: GRASS AREA, PASTURE

SURFACE LOCATION
LATITUDE: 40.36000°N
LONGITUDE: 104.78955°W
PDOP: 1.6
ELEV: 4804
1/4, 1/4, NW 1/4 NW 1/4



BOTTOM HOLE
LATITUDE: 40.35591°N
LONGITUDE: 104.78944°W

NEAREST PROPERTY LINE: 111' SOUTH

NOTE

According to Colorado law, you must commence any legal action based upon any defect in this W.L.C. within three years after you discover such defect. In no event, may any action based upon any defect in this survey be commenced more than ten years after the date of the certificate shown hereon. (13-80-105 C.R.S.)

LEGEND

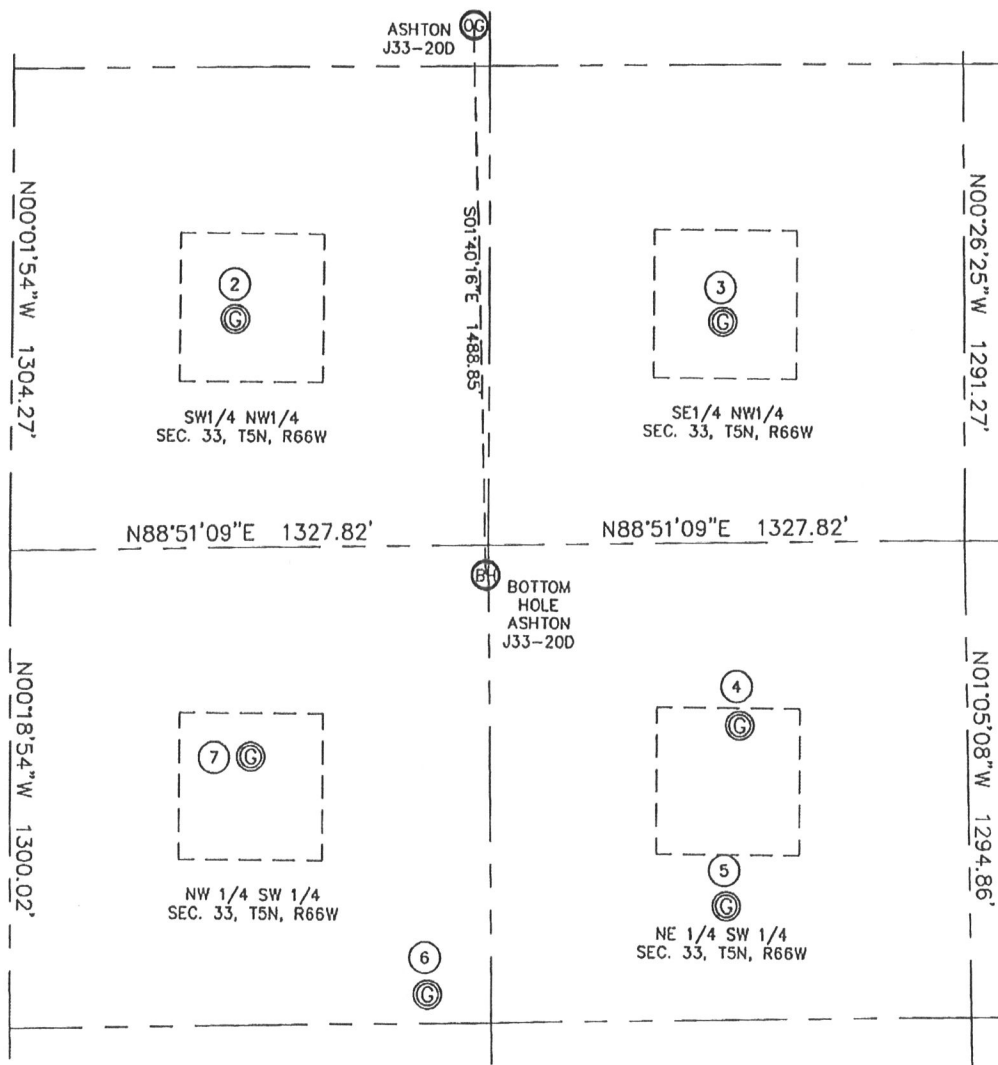
-  = ALIQUOT MONUMENT AS DESCRIBED
-  = CALCULATED POSITION

STEVEN A. LUND
24995
Steven A. Lund - On behalf of King Surveyors, Inc.
Licensed Land Surveyor No. 34995
State of Colorado
PROFESSIONAL LAND SURVEYOR

PROJECT#: 2008108

SITE SKETCH

SECTION: 33
TOWNSHIP: 5N
RANGE: 66W



②
FLACK 33-5H6
SW 1/4 NW 1/4
1982' FNL
616' FWL
LAT: 40.35781°N
LONG: 104.79195°W
PDOP: 1.6
ELEV: 4813

③
FLACK 1
SE 1/4 NW 1/4
1989' FNL
1980' FWL
LAT: 40.35780°N
LONG: 104.78706°W
PDOP: 1.2
ELEV: 4802

④
SPOMER 1
NE 1/4 SW 1/4
2096' FSL
2030' FWL
LAT: 40.35479°N
LONG: 104.78690°W
PDOP: 2.1
ELEV: 4800

⑤
SPOMER BC J33-11
NE 1/4 SW 1/4
1604' FSL
1992' FWL
LAT: 40.35344°N
LONG: 104.78704°W
PDOP: 1.4
ELEV: 4742

⑥
SPOMER J33-25
NW 1/4 SW 1/4
1377' FSL
1159' FWL
LAT: 40.35278°N
LONG: 104.79003°W
PDOP: 1.5
ELEV: 4742

⑦
SPOMER J33-12S
NW 1/4 SW 1/4
2029' FSL
666' FWL
LAT: 40.35455°N
LONG: 104.79179°W
PDOP: 1.9
ELEV: 4796

