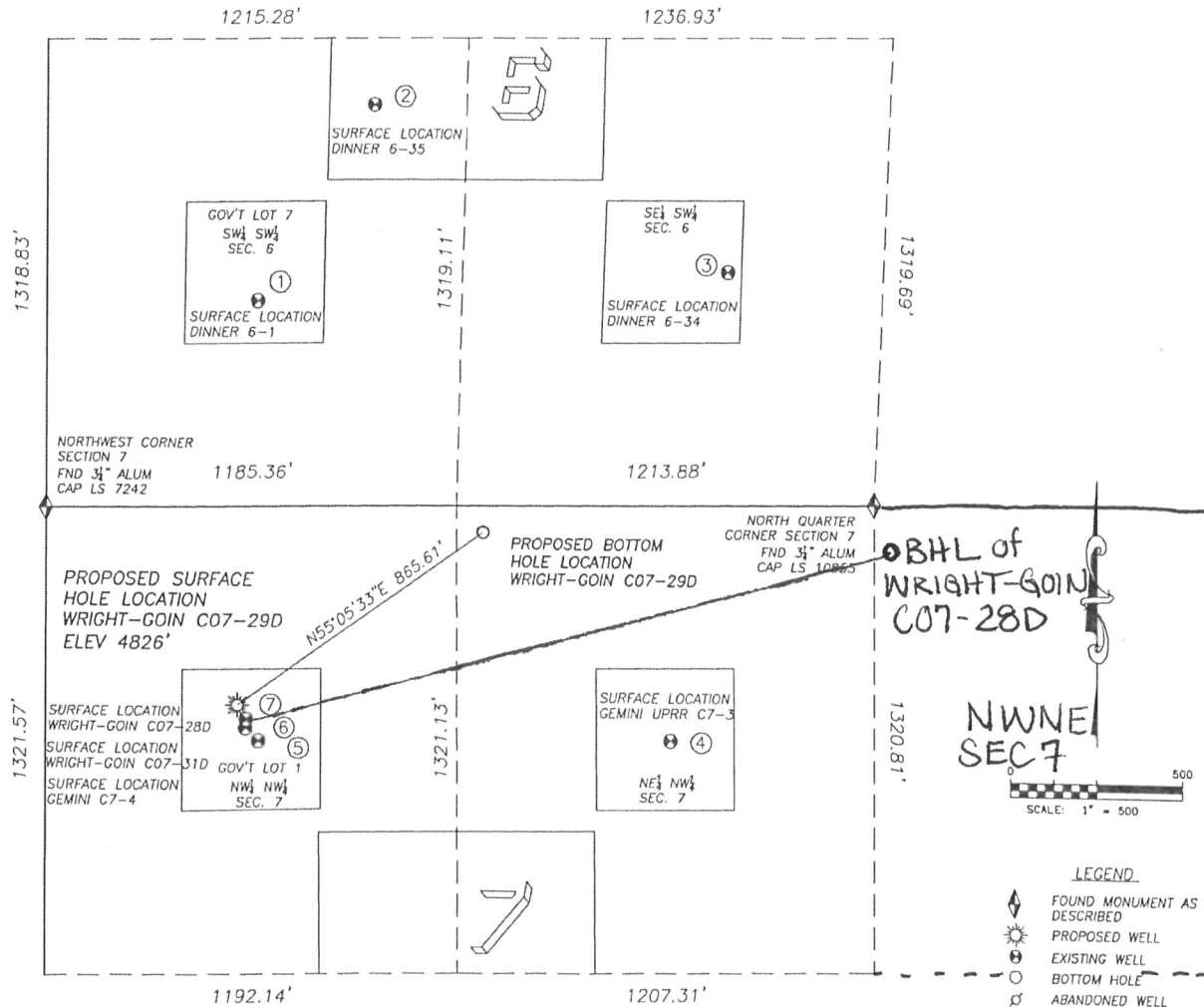


# MULTI WELL PLAN

DALEY LAND SURVEYING, INC. PARKER, CO. 80134 303 953 9841

## SITE SKETCH WRIGHT-GOIN C07-29D

SECTION 7, TOWNSHIP 4 NORTH, RANGE 64 WEST OF THE 6TH PRINCIPLE MERIDIAN



①  
DINNER 6-11  
GOV'T LOT 7  
(SW/SW) SEC. 6  
579' FSL, 607' FWL  
920' NW OF PROPOSED  
BOTTOM HOLE LOCATION  
LAT. N40.33554°  
LONG. W104.59986°  
EL: 4830'  
PDOP 1.5

②  
DINNER 6-35  
GOV'T LOT 7  
(SW/SW) SEC. 6  
1131' FSL, 942' FWL  
1243' NW OF PROPOSED  
BOTTOM HOLE LOCATION  
LAT. N40.33707°  
LONG. W104.59866°  
EL: 4844'  
PDOP 1.6

③  
DINNER 6-34  
SE/SW SEC. 6  
657' FSL, 1973' FWL  
1027' NE OF PROPOSED  
BOTTOM HOLE LOCATION  
LAT. N40.33580°  
LONG. W104.59496°  
EL: 4828'  
PDOP 1.2

④  
GEMINI UPRR C7-3  
NE/NW SEC. 7  
666' FNL, 1809' FWL  
800' SE OF PROPOSED  
BOTTOM HOLE LOCATION  
LAT. N40.33217°  
LONG. W104.59555°  
EL: 4854'  
PDOP 2.3

⑤  
GEMINI C7-4  
GOV'T LOT 1  
(NW/NW) SEC. 7  
663' FNL, 613' FWL  
881' SW OF PROPOSED  
BOTTOM HOLE LOCATION  
LAT. N40.33213°  
LONG. W104.59984°  
EL: 4827'  
PDOP 1.6

⑥  
WRIGHT-GOIN C07-31D  
GOV'T LOT 1  
(NW/NW) SEC. 7  
627' FNL, 577' FWL  
886' SW OF PROPOSED  
BOTTOM HOLE LOCATION  
LAT. N40.33223°  
LONG. W104.59997°  
EL: 4827'  
PDOP 2.3

⑦  
WRIGHT-GOIN C07-28D  
GOV'T LOT 1  
(NW/NW) SEC. 7  
602' FNL, 578' FWL  
869' SW OF PROPOSED  
BOTTOM HOLE LOCATION  
LAT. N40.33230°  
LONG. W104.59997°  
EL: 4826'  
PDOP 1.4

### NOTES:

- THIS DOES NOT REPRESENT A BOUNDARY SURVEY
- THE LATITUDES AND LONGITUDES SHOWN ARE REFERENCED TO NAD83
- DATUM FOR ELEVATION IS NAVD88. ELEVATIONS ARE DERIVED FROM GPS-RTK OBSERVATIONS PROCESSED THROUGH OPUS, UTILIZING THE GEOID03 MODEL.