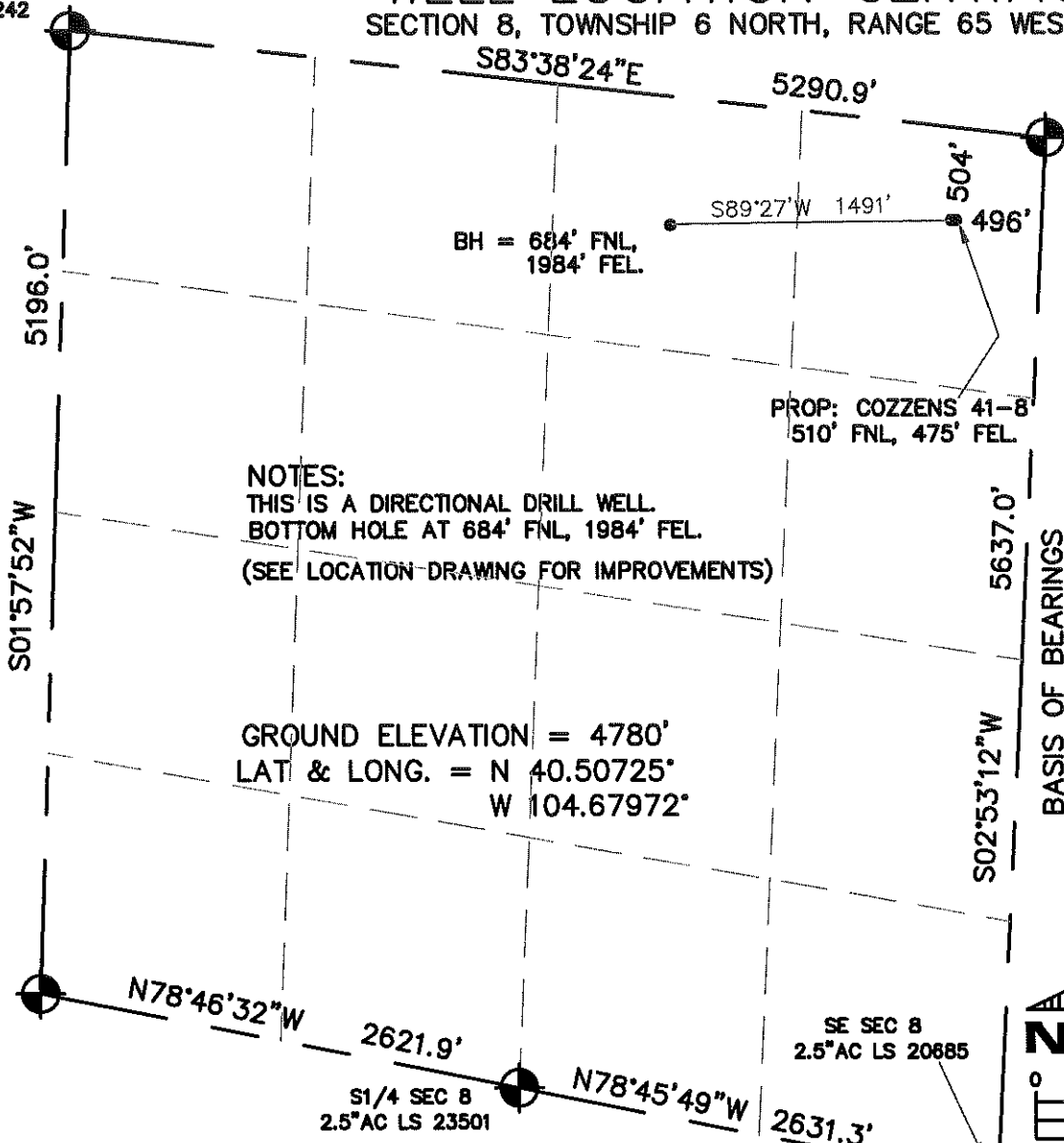


NW SEC 8
3.25"AC LS 7242

WELL LOCATION CERTIFICATE

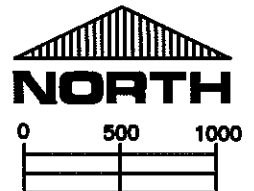
SECTION 8, TOWNSHIP 6 NORTH, RANGE 65 WEST, 6TH P.M.

NE SEC 8
2.5"AC LS 20685



NOTES:
THIS IS A DIRECTIONAL DRILL WELL.
BOTTOM HOLE AT 684' FNL, 1984' FEL.
(SEE LOCATION DRAWING FOR IMPROVEMENTS)

GROUND ELEVATION = 4780'
LAT & LONG. = N 40.50725°
W 104.67972°



SCALE:
1" = 1000'
LEGEND:

- = FOUND MONUMENT
- = PROPOSED WELL
- = IMPROVEMENTS (AS LABELED)

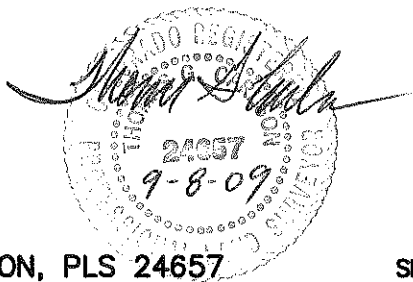
ELEVATION SOURCE = USGS 7.5' QUAD.MAP CONTOURS
NGVD 1929 DATUM.

LAT. & LONG. ARE DIFFERENTIALLY CORRECTED (NAD'83)
USING (DGPS) WITH (PDOP) VALUES LESS THAN SIX (6).

SHOWN DISTANCES ARE FIELD MEASURED - EXTERIOR SECTION LINES
ARE DRAWN TO SCALE (BEST APPROX. OR FOUND MONUMENT).

DISTANCES TO WELL SHOWN PERPENDICULAR
TO SECTION LINES.

I HEREBY STATE TO PETROLEUM DEVELOPMENT CORP. THAT THIS WELL
LOCATION CERTIFICATE FOR THE WELL COZZENS 31-8D IS LOCATED 504' FNL
& 496' FEL, SEC. 8, T6N, R65W, 6PM.



THOMAS G. CARLSON, PLS 24657
HORSESHOE SURVEYING, LLC

THIS IS NOT A MONUMENTED BOUNDARY SURVEY, IT IS ONLY A
DRAWING INTENDED TO DEPICT THE WELL LOCATION TO SECTION LINES.

PREPARED BY:		HORSESHOE SURVEYING, LLC PO BOX 150458 LAKEWOOD, CO 80215 (720)872-0196		WELL NAME: COZZENS 31-8D	
DRAWING DATE: 9-8-09		BY: TGC		LOCATION: WELD COUNTY, CO NE1/4, SEC. 8, T6N, R65W, 6TH P.M.	
FIELD DATE: 7-23-08		CHKD:		JOB NO.	SHEET NO. 1 OF 1