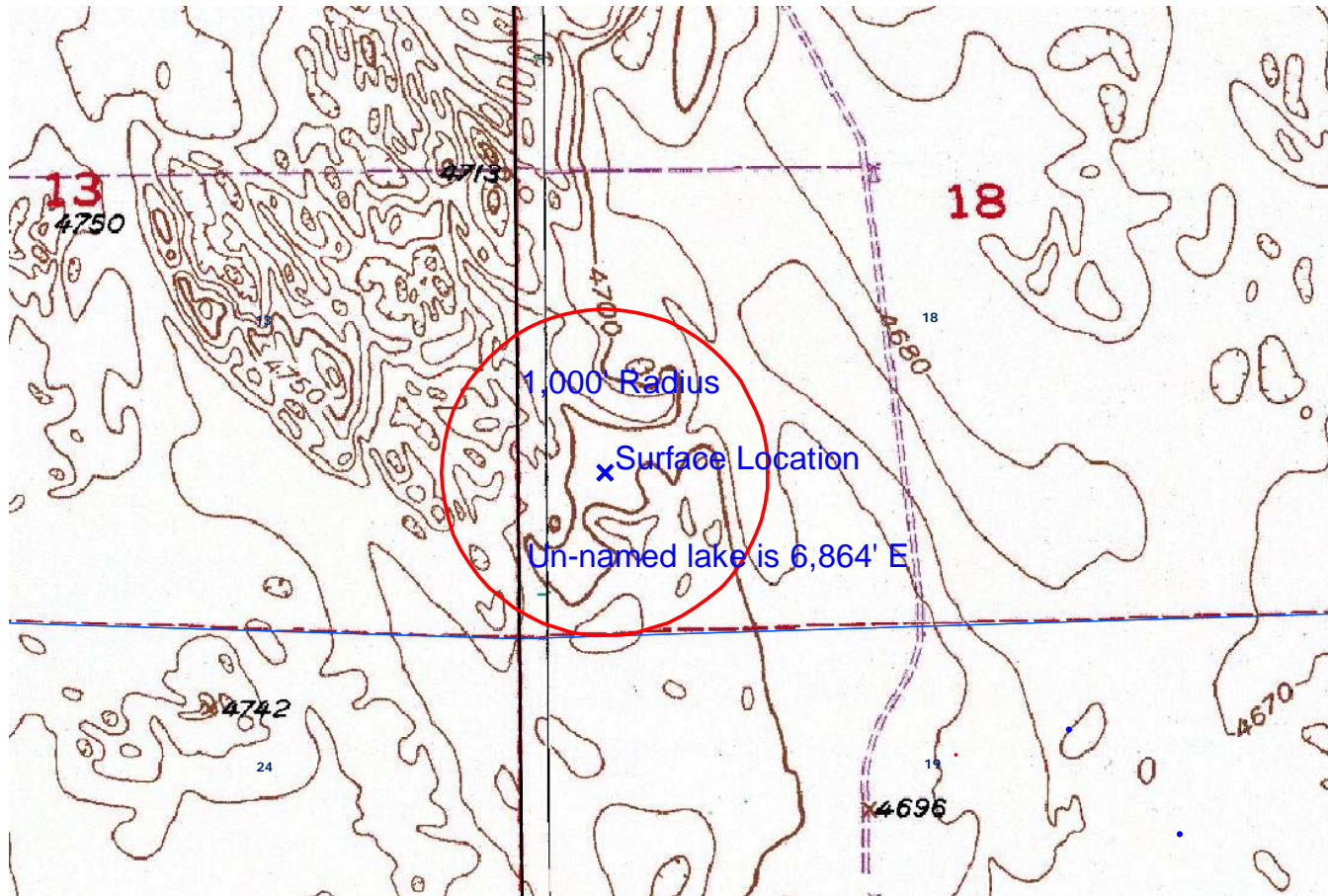


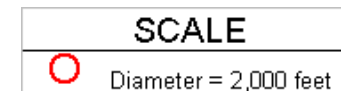
STATE 13-18






TOPO





HYDROLOGY MAP-A



TOWNSHIP 3 NORTH, RANGE 62 WEST



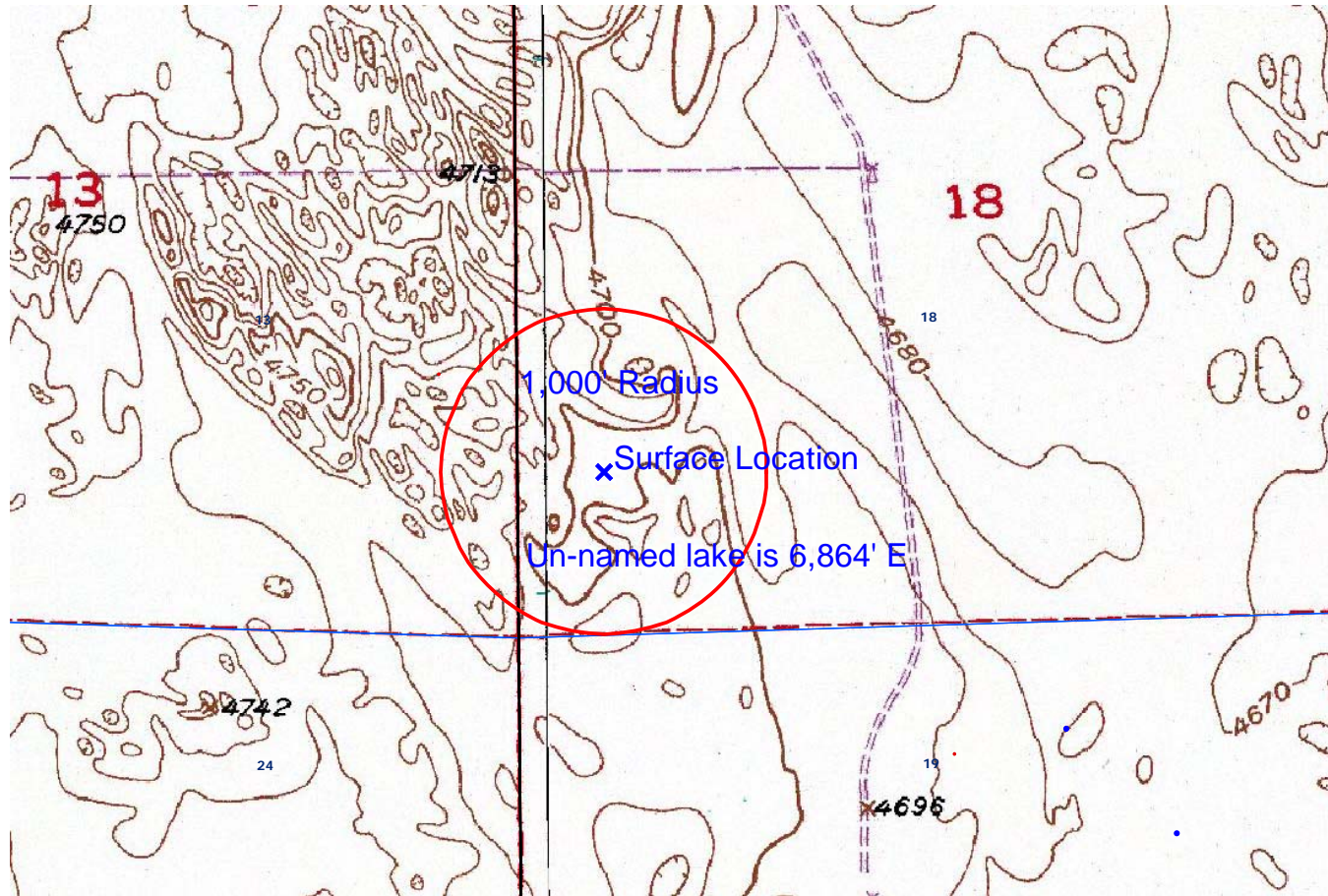
LEGEND A
WATER RESOURCES
 Water Wells
 Lakes
 Major Rivers
 Streams
 300-Foot Stream Buffers

LEGEND B
1200-SEARIES WILDLIFE AREAS
 RSO Areas
 RSO_Osprey_Curren
 SWH Areas
 State Wildlife Areas

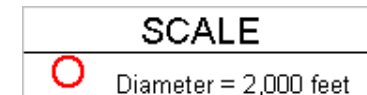
STATE 13-18

TOPO

HYDROLOGY MAP-B-

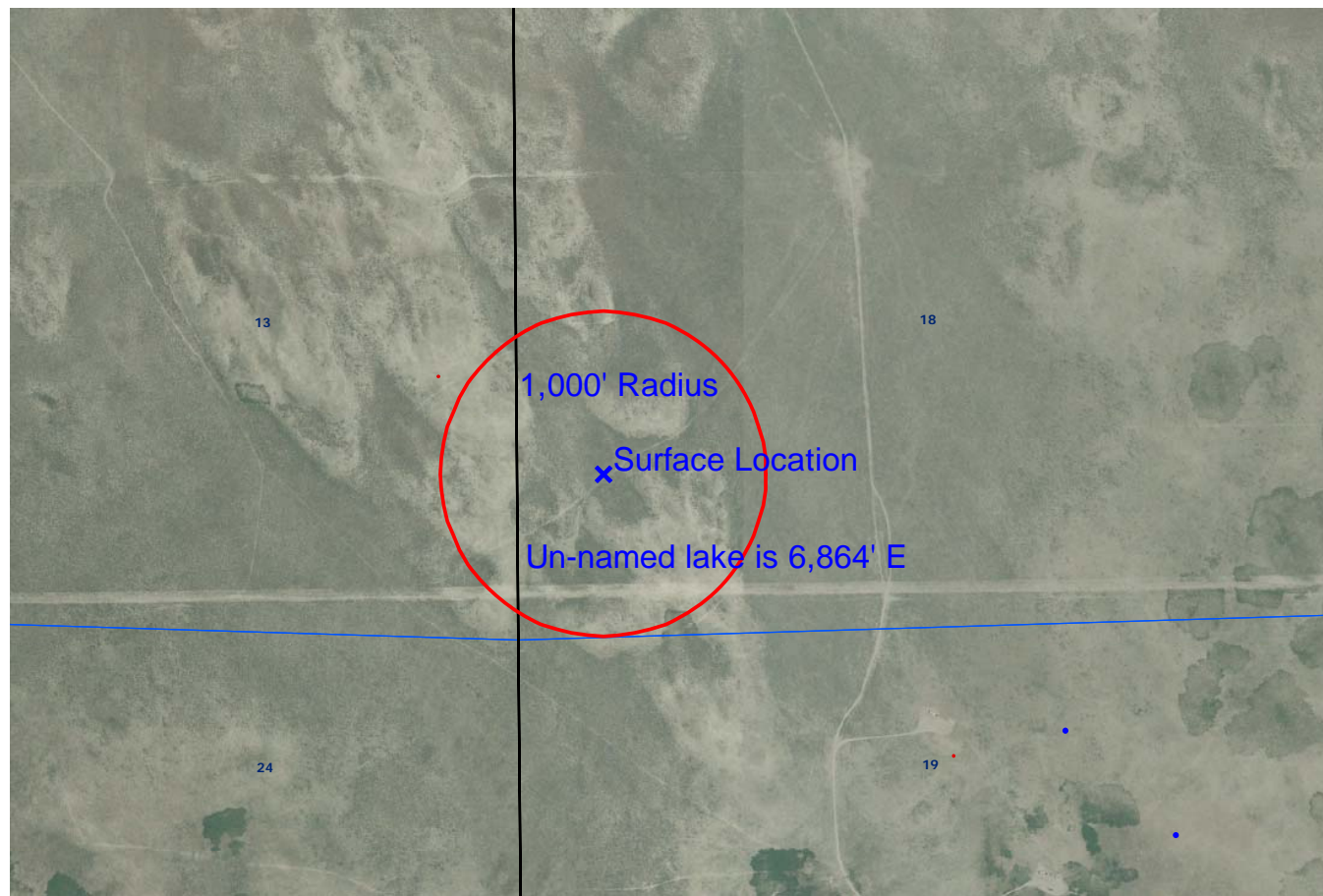


TOWNSHIP 3 NORTH, RANGE 62 WEST




LEGEND A
WATER RESOURCES
Water Wells
Lakes
Major Rivers
Streams
300-Foot Stream Buffers

LEGEND B
1200-SEARIES WILDLIFE AREAS
RSO Areas
RSO_Osprey_Curren
SWH Areas
State Wildlife Areas



TOWNSHIP 3 NORTH, RANGE 62 WEST

SCALE

 Diameter = 2,000 feet

LEGEND A

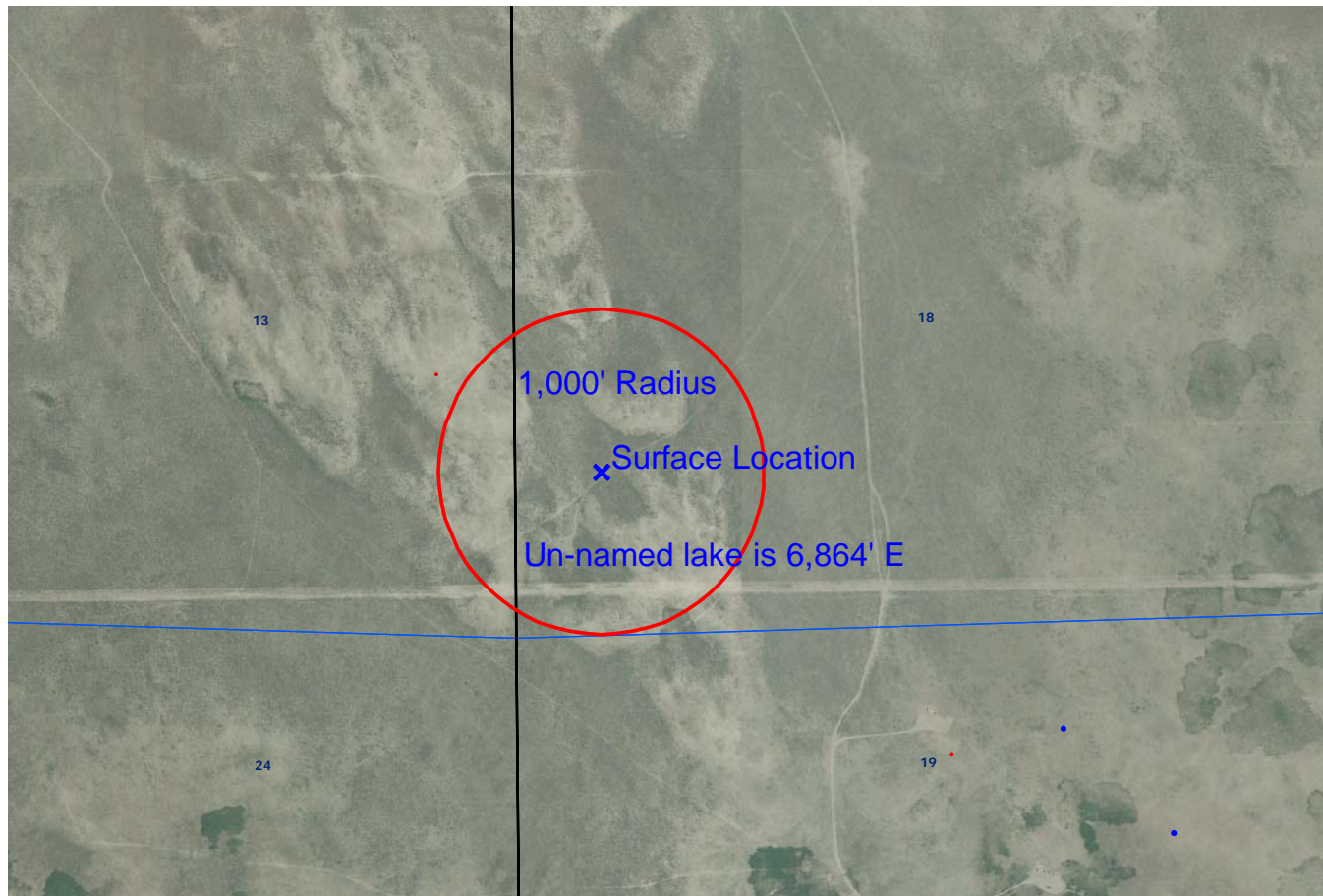
WATER RESOURCES

- Water Wells
- Lakes
- Major Rivers
- Streams
- 300-Foot Stream Buffers

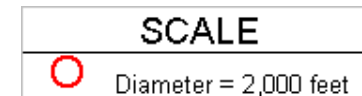
LEGEND B

1200-SEARIES WILDLIFE AREAS

- RSO Areas
- RSO_Osprey_Curren
- SWH Areas
- State Wildlife Areas



TOWNSHIP 3 NORTH, RANGE 62 WEST



LEGEND A	LEGEND B
WATER RESOURCES	1200-SEARIES WILDLIFE AREAS
Water Wells	RSO Areas
Lakes	RSO_Osprey_Curren
Major Rivers	SWH Areas
Streams	State Wildlife Areas
300-Foot Stream Buffers	