

October 13, 2009

Colorado Oil and Gas Conservation Commission
The Chancery Building
1120 Lincoln Street, Suite 801
Denver, CO 80203

Attn: Mr. David Neslin, Director

RE: **IGO FARMS J28-31D**
Codell/Niobrara/ New Drill
Township 5 North, Range 66 West, 6th P.M.
Section 28: SWNW: 1427' FNL & 971' FWL (Surface Location)
Section 28: NWNW: 1100' FNL & 75' FWL (Bottom Hole Location)
Weld County, Colorado

Mr. Neslin:

Noble Energy, Inc. ("NEI") is planning to drill the captioned boundary well in accordance with the provisions of COGCC Rule 318A(e).

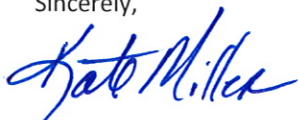
NEI's proposed wellbore spacing unit consists of the W/2NW/4 of Section 28, T5N, R66W and the E/2SE/4 of Section 29, T5N, R66W creating a 160-acre wellbore spacing unit. NEI is the only owner within the proposed wellbore spacing unit, therefore NEI hereby attests that no notice letters are required under COGCC Rule 318A.e.(6).

Also, enclosed are copies of the following documents to assist you in your review and approval of NEI's proposed APD for the captioned well:

- Plat illustrating the proposed wellbore spacing unit and number of Codell/Niobrara/J Sand wells located within the existing 160-acre governmental quarter section (NE/4) to be less than eight (8) in accordance with COGCC Rule 318A.f.
- Plat illustrating proposed wellbore spacing unit on existing location plat.

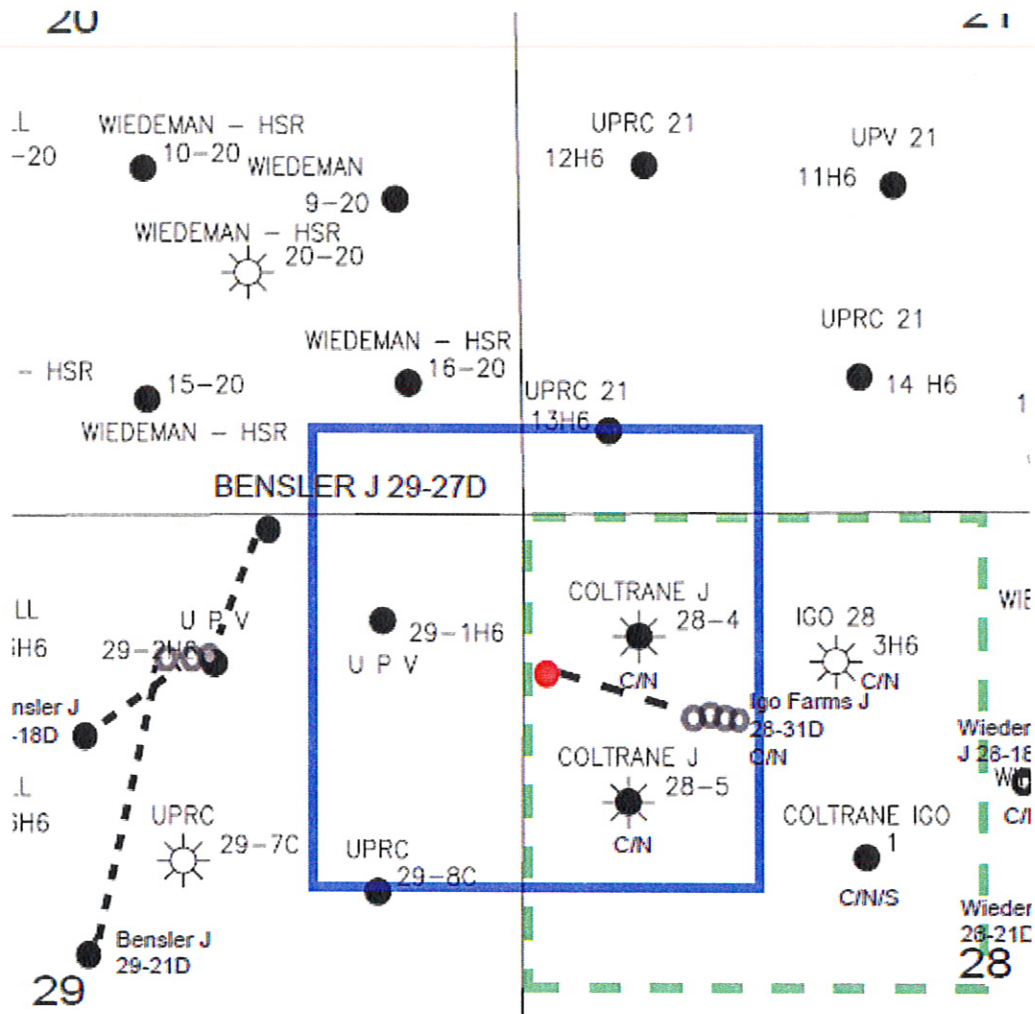
Thank you for your attention to the enclosed. NEI respectfully requests that the COGCC review the enclosed information and approve the Application for Permit to Drill the captioned well.

Sincerely,



Kate Miller
Regulatory Specialist
Noble Energy Inc.

Igo Farms J28-31D
SWNW, Sec 28, T5N, R66W



LEGEND



Proposed 160 acre Spacing Unit



Bottom Hole Located SWNW, Sec 28, T5N, R66W

The governmental $\frac{1}{4}$ Section has less than 8 bottom hole wells producing from the Codell, Niobrara, & J-Sand Formations.

PROPOSED 318Ae SPACING UNIT

Steil Surveying Services, LLC

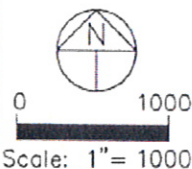
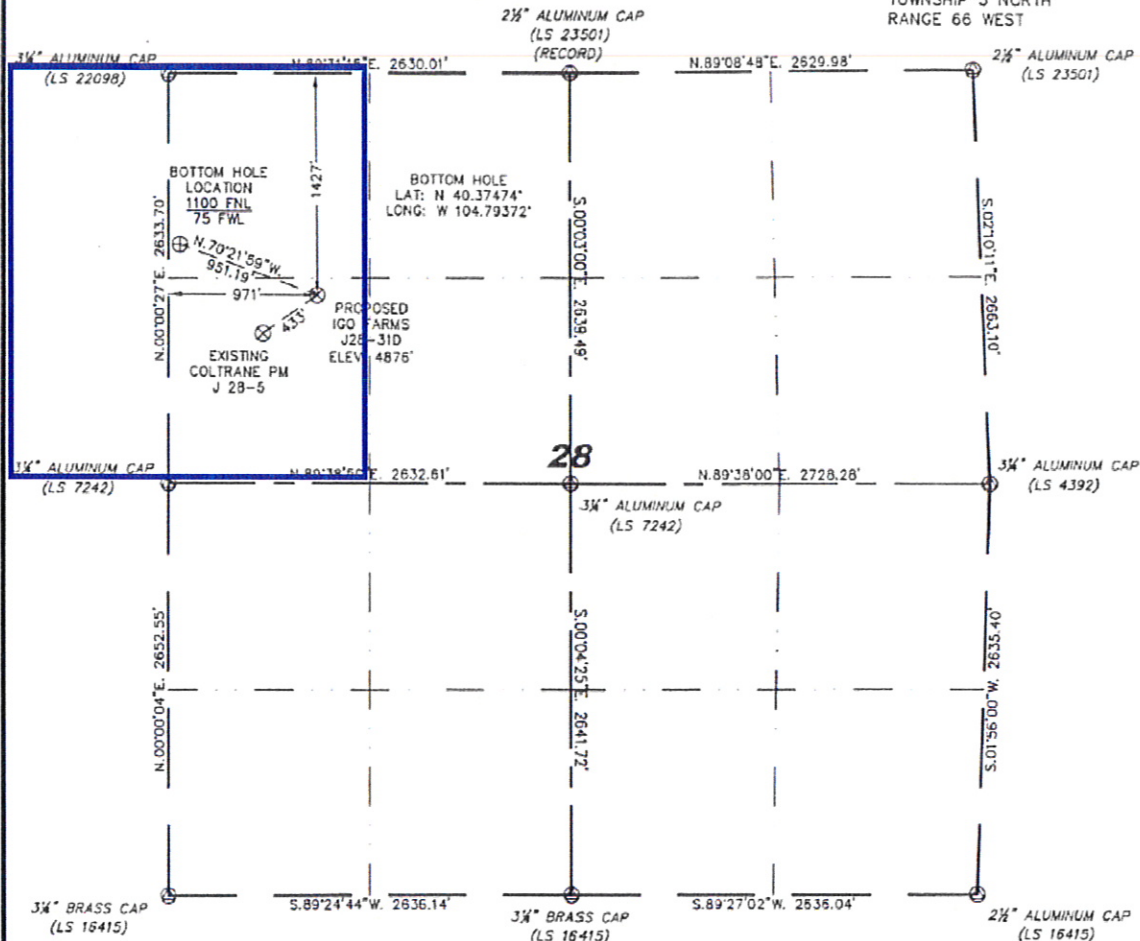
1102 West 19th Street P.O. BOX 2073

Cheyenne, Wyoming 82009

WELL LOCATION CERTIFICATE

THIS MAP DOES NOT REPRESENT A BOUNDARY SURVEY

SECTION 28
TOWNSHIP 5 NORTH
RANGE 66 WEST



IN ACCORDANCE WITH A REQUEST FROM JACK FINCHAM - NOBLE ENERGY INC., STEIL SURVEYING SERVICES, LLC HAS DETERMINED THE LOCATION OF THE IGO FARMS J28-31D WELL TO BE 1427' FNL, 971' FNL, AS MEASURED AT NINETY (90) DEGREES FROM THE SECTION LINES, SECTION 28, TOWNSHIP 5 NORTH, RANGE 66 WEST, 8TH PRINCIPLE MERIDIAN, WELD COUNTY, COLORADO.

I HEREBY CERTIFY THAT THIS WELL LOCATION CERTIFICATE WAS PREPARED BY ME, OR UNDER MY DIRECT SUPERVISION, THAT THE FIELD WORK WAS COMPLETED ON 02/11/2009, FOR AND ON BEHALF OF NOBLE ENERGY INC., THAT IT IS NOT A LAND SURVEY PLAT OR AN IMPROVEMENT SURVEY PLAT, AND THAT IT IS NOT TO BE RELIED UPON FOR ESTABLISHMENT OF FENCE, BUILDING, OR OTHER FUTURE IMPROVEMENT LINES.

NOTES:

- 1) BASIS OF BEARINGS FOR THIS MAP ARE BASED UPON GPS OBSERVATIONS MADE ON 07/03/2007 BETWEEN MONUMENTS LOCATED AT THE SOUTHEAST SECTION CORNER AND THE NORTHEAST SECTION CORNER OF SAID SECTION AND WITH ALL BEARINGS SHOWN HEREON RELATIVE THERETO.
- 2) ELEVATIONS ARE BASED UPON NGS OPUS SOLUTION NAVD 88 DATUM.
- 3) THE NEAREST EXISTING WELL IS: COLTRANE PM J 28-5, 433' SOUTHWEST.
- 4) SEE VISIBLE IMPROVEMENTS EXHIBIT FOR ALL IMPROVEMENTS WITHIN 400'.
- 5) THE LOCATION FALLS IN IRRIGATED CROP LAND.

LATITUDE & LONGITUDE (NAD 83 SURFACE HOLE):
LATITUDE: N 40.37384'
LONGITUDE: W 104.79051'
PDOP: 2.3
QUARTER-QUARTER: SW/4NW/4
NEAREST PROPERTY LINE: 101' TO THE SOUTH

NOTICE: According to Colorado law you MUST commence any legal action based upon any defect in this W.L.C. within three years after you first discover such defect. In no event may any action based upon any defect in this W.L.C. be commenced more than ten years from this date of the certification shown hereon.

LEGEND

- (M) FOUND SURVEY MONUMENT PER MONUMENT RECORD - EXCEPTIONS NOTED.
- (C) CALCULATED DIMENSION

David C. Holmes
Professional Land Surveyor Registration No. 32828
State of Colorado

JOB # 07086

Completed 05/07/2009

