



October 14, 2009

Mr. Mike Cox
Environmental Coordinator
Noble Energy, Inc.
804 Grand Avenue
Platteville, Colorado 80651

**RE: Third Quarter 2009 Remediation and Monitoring Report
Frick 18 – 2 & 8 Natural Gas Wellhead Site
Weld County, Colorado**

Dear Mr. Cox:

LT Environmental, Inc. (LTE) was retained by Noble Energy, Inc. (Noble) to conduct corrective actions at the Frick 18 – 2 & 8 natural gas wellhead site (Site) located approximately 0.4 miles north of the intersection of Weld County Road (WCR) 44 and WCR 51 in Weld County, Colorado (Figure 1). LTE, on behalf of Noble, has completed remediation system design, installation, startup, and operation and maintenance (O&M) of the air sparging/soil vapor extraction (AS/SVE) system. LTE is continuing to conduct groundwater monitoring at the Site to evaluate the performance of the remediation system in mitigating groundwater impact. This correspondence is provided as the Third Quarter 2009 Remediation and Monitoring Report, and summarizes activities conducted at the Site from July 1, 2009 through September 30, 2009. Activities conducted during the reporting period included O&M of the remediation system and one quarterly groundwater monitoring event.

Remediation System Description

The AS system is designed to introduce ambient air into the subsurface water column for dissolved hydrocarbon volatilization and to promote aerobic microbial decomposition of petroleum constituents. The SVE system is designed to volatilize petroleum constituents adsorbed onto soil particles and to remove petroleum vapors released from the groundwater by the AS process. AS and SVE wells are connected to a remediation equipment trailer housing the equipment for the AS/SVE system. The remediation system installation was described in the previously submitted report, *Remediation System Installation and Startup, and Pre-System Groundwater Sampling Results*, dated September 11, 2008. The remediation system initiated operation at the Site on August 8, 2008. The system layout is illustrated on Figures 2 and 3.



Remediation System O&M

O&M activities conducted in the reporting period included:

- Completion of routine, weekly, monthly, and quarterly O&M checks to monitor and adjust system performance;
- Repair of the AS blower cooling fan;
- Adding a direct line to the natural gas well casing to ensure constant generator operation;
- Generator maintenance, which included changing the oil and oil filters;
- System transport from another Noble facility (Becky 2-6 wellhead and tank battery) on September 2, 2009; and
- AS wellhead flow adjustments to enhance remedial efforts in remaining impacted areas.

The remediation program for this Site includes continued intermittent operation of the AS/SVE system. The system runs intermittently, and on a pulsing/cycling schedule, to maximize remediation efforts. Operation of the remediation system is conducted continuously for an approximate three month period, followed by a three month static evaluation with the remediation system inactive. This program will allow for focused removal of hydrocarbon impact along with static evaluations to determine which areas of the Site may require continued operational adjustments. The SVE system was not utilized during the operating period due to high water table conditions, excess water recovery, and potential for freezing in the above ground recovery lines. The generator timer continues to allow system operation during daylight hours only, per the landowner's request.

Groundwater Sampling Procedures

On August 31, 2009, 10 groundwater monitoring wells were sampled to determine the current plume extent following three months of static evaluation. Monitoring well SB18R was not sampled as the casing was bent or blocked approximately 1.5 feet below ground surface. Monitoring well SB20 could not be located due to dense vegetation in the area. Prior to sampling, depth to groundwater in each monitoring well was measured and recorded for calculating purge volumes (Table 1). Each well was purged of three casing volumes and then groundwater samples were collected from the well points by advancing disposable 3/16-inch diameter polyethylene tubing inside 1-inch diameter polyvinyl chloride (PVC) casing and extending the 3/16-inch diameter tubing below the water table. A peristaltic pump was utilized to bring the groundwater to the surface for collection with laboratory prepared sample bottles. Groundwater samples were collected in 40-milliliter vials, placed on ice, and delivered under chain-of-custody (COC) protocol to Origins Laboratory located in Denver, Colorado. Samples



were analyzed for benzene, toluene, ethylbenzene, and total xylenes (BTEX) by Environmental Protection Agency (EPA) Method 8260B.

Hydrogeology

During the August 31, 2009 sampling event, the depth to static groundwater ranged from 1.63 feet below top of casing (btoc) in SB10R to 4.88 feet btoc in SB27 (Table 1). The groundwater flow direction was to the east with an average hydraulic gradient of approximately 0.013 feet per foot (ft/ft).

Groundwater Analytical Results

The Colorado Department of Public Health and Environment (CDPHE) Water Quality Control Commission (WQCC) has established Regulation 41 - The Basic Standards for Groundwater (Regulation 41) for BTEX of 5.0 micrograms per liter (ug/L), 560 ug/L, 700 ug/L, and 1,400 ug/L, respectively. Table 2 summarizes groundwater analytical results for samples collected during all monitoring events. The laboratory analytical report, laboratory quality assurance/quality control data, and COC documentation are presented in Attachment 1.

Ten groundwater samples were collected and submitted to Origins Laboratory for BTEX analysis during the August 31, 2009 sampling event (MW01, MW02, SB02R, SB03, SB07, SB09, SB10R, SB15, SB16, and SB27). Groundwater analytical results indicate that benzene was detected above the Regulation 41 standard for benzene in monitoring wells MW01, MW02, SB02R, SB10R, and SB27 at concentrations ranging from 6.81 ug/L at MW02 to 7,000 ug/L at MW01. Xylenes were detected above the Regulation 41 standard in monitoring well SB02R at 3,055 ug/L. BTEX compounds were not detected above the Regulation 41 standards in the remaining samples. Groundwater analytical results for the August 2009 sampling event are summarized in Table 2 and illustrated on Figure 4.

Summary and Conclusions

Since system startup, benzene concentrations in monitoring wells SB07, SB09, SB16, SB18/18R, and SB20 have successfully decreased into compliance with the Regulation 41 standard. These data indicate that cleanup objectives have been attained for these areas. In addition, BTEX concentrations are exhibiting a stable and decreasing trend site-wide. Flow controls installed in March 2009 have allowed for a more focused and efficient remedial effort onsite. Remaining areas of the Site exhibiting benzene groundwater concentrations above cleanup goals are in the vicinity of MW01, MW02, SB02R, SB10R, and SB27. In order to achieve cleanup goals, remediation system operation efforts will be concentrated in these areas of the Site.

The next groundwater sampling event will be conducted in November 2009. The remediation system will be active at the Site until December 2009 followed by a three month static evaluation. Groundwater monitoring will continue to be conducted at the Site on a quarterly



basis until site closure status is received from the Colorado Oil and Gas Conservation Commission (COGCC).

LTE appreciates the opportunity to provide environmental services to Noble. Please call us at 303-433-9788 if you have any questions or comments regarding this report.

Sincerely,

LT ENVIRONMENTAL, INC.

A handwritten signature in black ink, appearing to read 'Rob Rebel'.

Rob Rebel, E.I.T.
Project Manager

A handwritten signature in black ink, appearing to read 'Steve Kahn'.

Steve Kahn, P.E.
Senior Engineer

Attachments

Figure 1: Site Map

Figure 2: AS System Layout

Figure 3: SVE System Layout

Figure 4: Groundwater Analytical Results – August 31, 2009

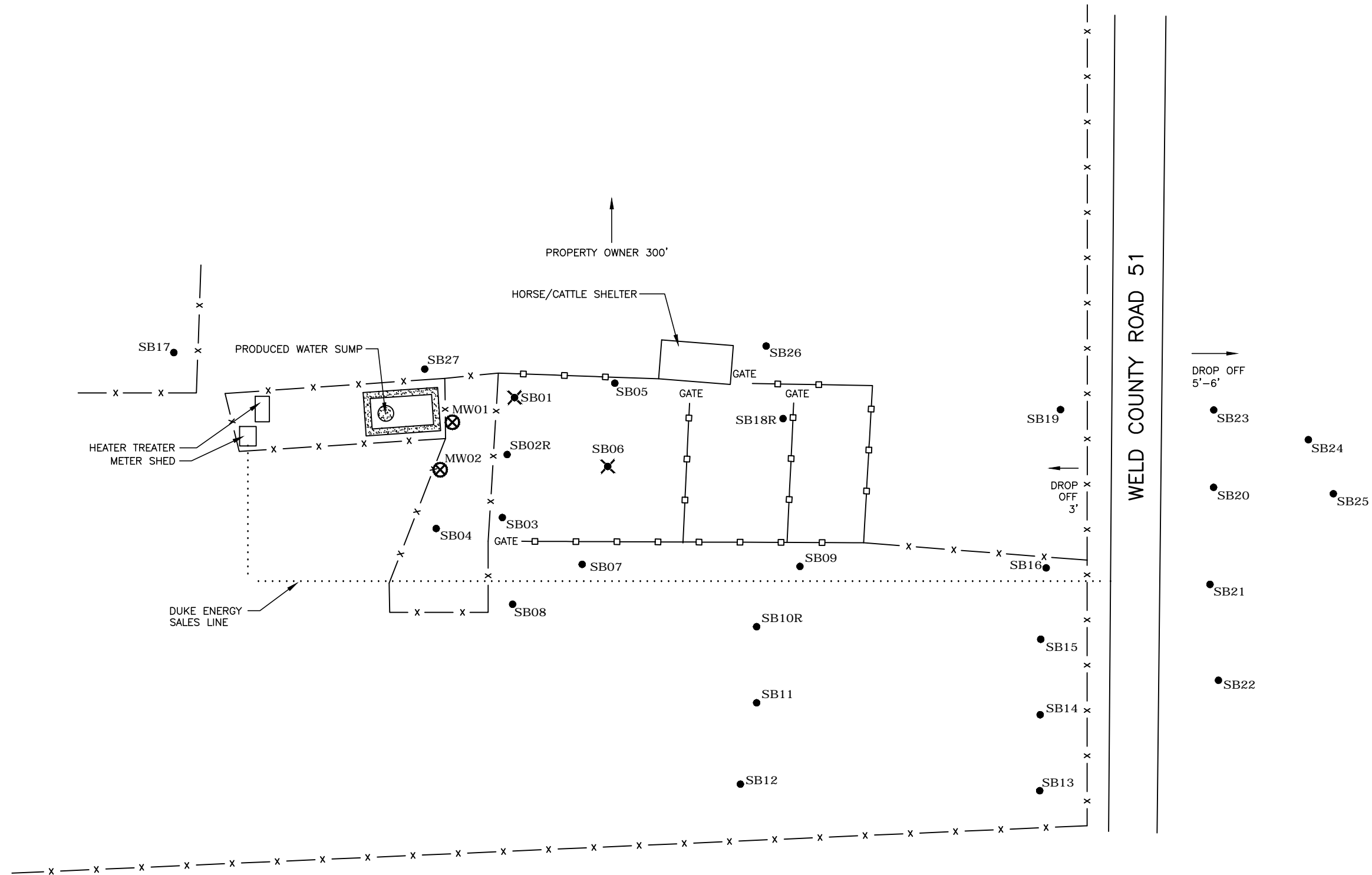
Table 1: Groundwater Elevation Summary

Table 2: Groundwater Analytical Results – Volatile Organic Compounds





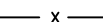
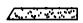
Attachment 1: Laboratory Analytical Report

FIGURES





LEGEND

- MW01  MONITORING WELL LOCATION
- SB03  SOIL BORING/TEMPORARY MONITORING WELL LOCATION
- SB01  DESTROYED SOIL BORING/TEMPORARY MONITORING WELL LOCATION
-  METAL PIPE FENCE
-  BARBED WIRE FENCE
-  BERM

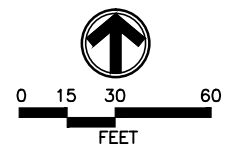
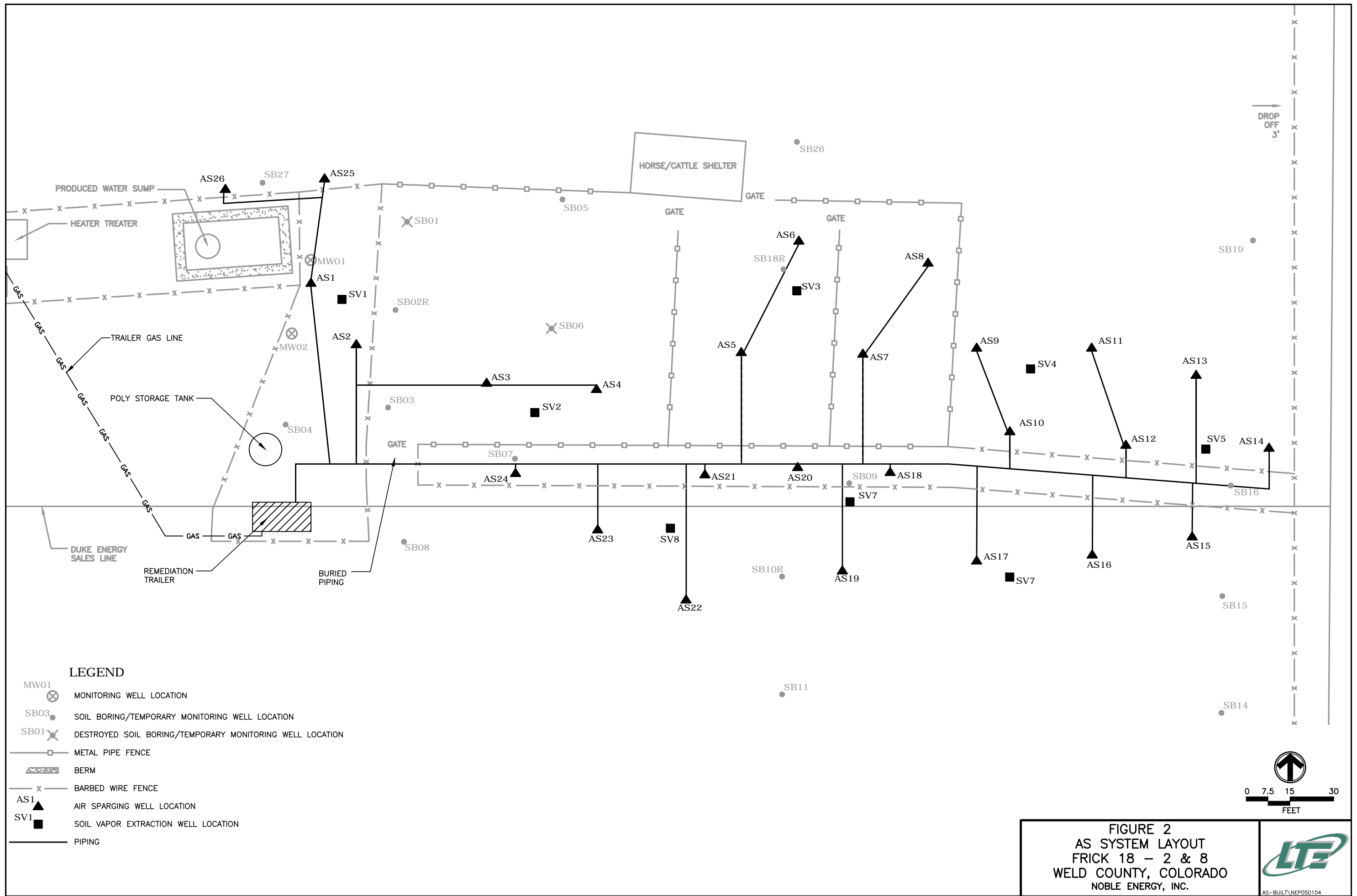
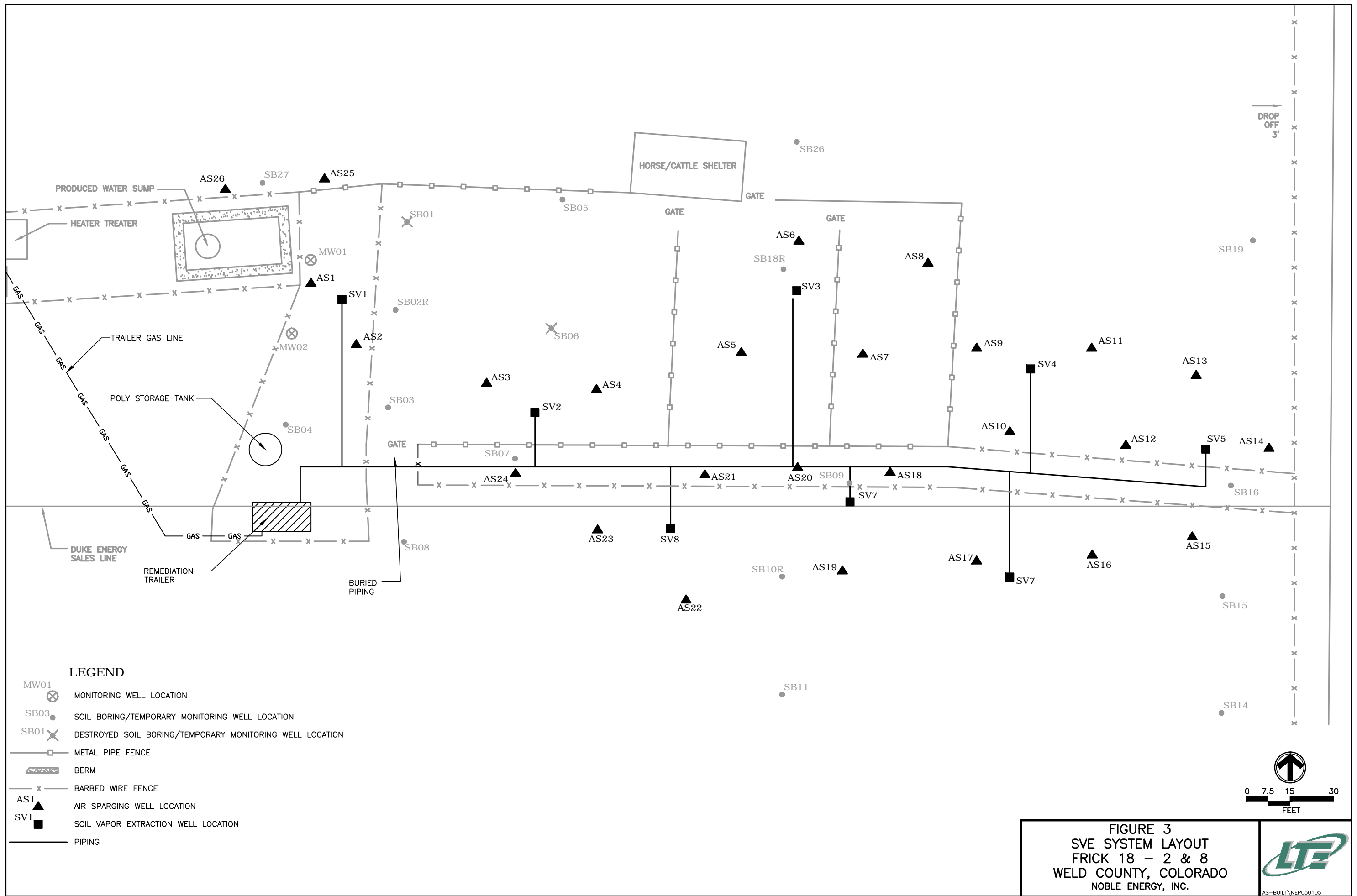
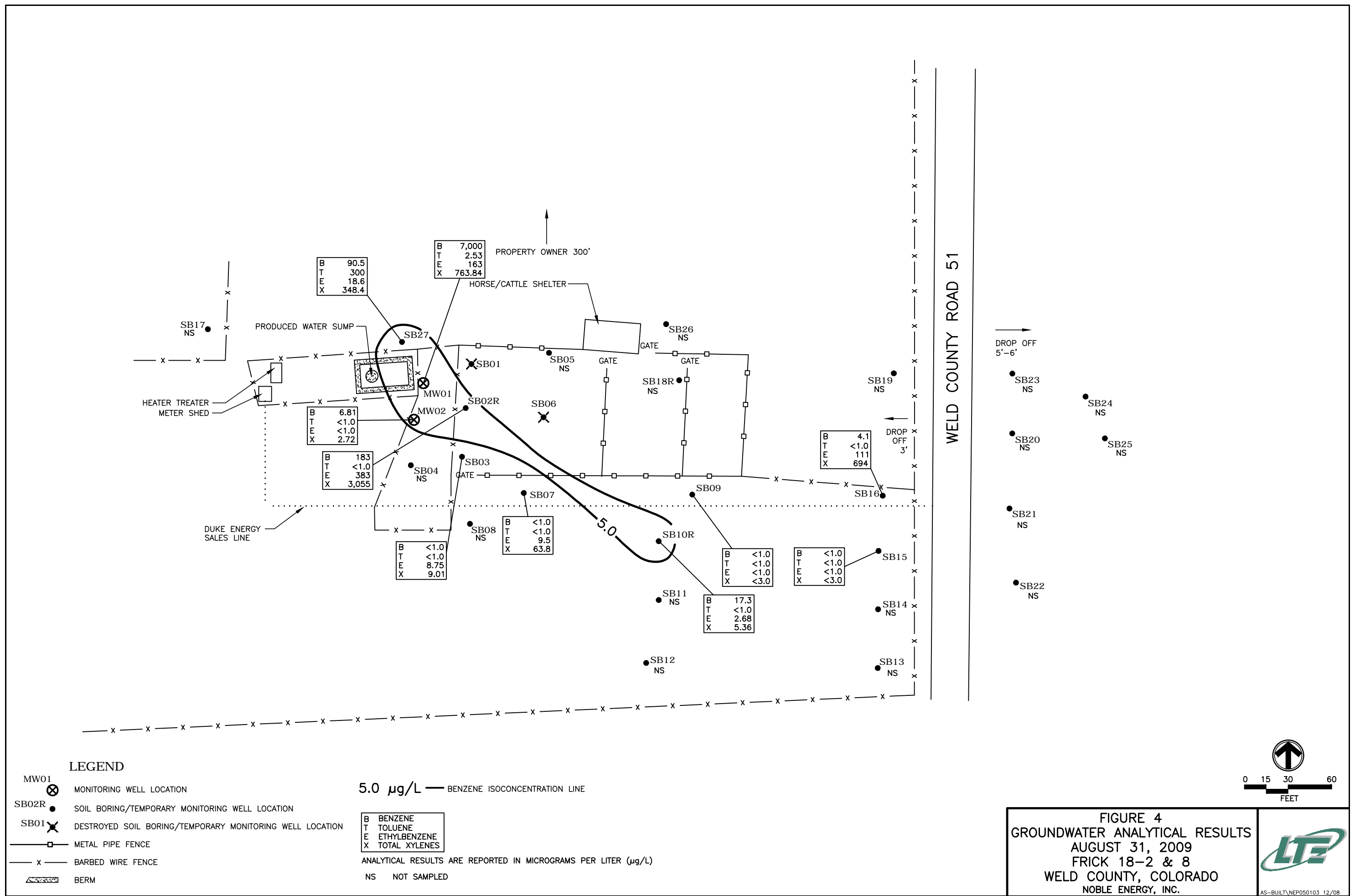


FIGURE 1
SITE MAP
FRICK 18-2 & 8
WELD COUNTY, COLORADO
NOBLE ENERGY, INC.









TABLES

TABLE 1
GROUNDWATER ELEVATION SUMMARY

FRICK 18 - 2 & 8
WELD COUNTY, COLORADO
NOBLE ENERGY, INC.

Well ID	Date	Total Depth (ft)	Depth to Water (ft)	TOC Elevation (ft)	Groundwater Elevation (relative ft)
MW01	10/11/05	17.78	8.80	96.33	87.53
	01/20/06	17.78	8.23	96.33	88.10
	03/28/07	17.78	7.63	96.33	88.70
	08/05/08	17.78	6.27	96.33	90.06
	11/14/08	17.78	4.32	96.33	92.01
	11/24/08	17.78	3.49	96.33	92.84
	02/24/09	17.78	3.31	96.33	93.02
	05/26/09	17.78	0.70	96.33	95.63
	08/31/09	17.78	3.75	96.33	92.58
MW02	10/11/05	18.39	9.68	96.83	87.15
	01/20/06	18.39	8.78	96.83	88.05
	03/28/07	18.39	7.95	96.83	88.88
	08/05/08	18.39	6.51	96.83	90.32
	11/24/08	18.39	3.78	96.83	93.05
	02/24/09	18.39	3.31	96.83	93.52
	05/26/09	18.34	1.00	96.83	95.83
	08/31/09	18.34	4.10	96.83	92.73
SB01	10/11/05	14.98	8.72	95.82	87.10
SB02	10/11/05	12.68	9.24	96.06	86.82
	01/20/06	12.68	8.35	96.06	87.71
	03/28/07	12.68	7.62	96.06	88.44
SB02R	02/24/09	12.72	3.15	NM	NM
	05/26/09	12.72	0.75	NM	NM
	08/31/09	12.72	4.06	NM	NM
SB03	10/11/05	15.01	9.50	96.06	86.56
	01/20/06	15.01	8.45	96.06	87.61
	03/28/07	15.01	7.64	96.06	88.42
	08/05/08	15.01	6.34	96.06	89.72
	11/24/08	15.01	3.44	96.06	92.62
	02/24/09	15.01	3.05	96.06	93.01
	05/26/09	15.01	0.85	96.06	95.21
	08/31/09	15.01	3.58	96.06	92.48
SB04	10/11/05	12.86	10.04	97.26	87.22
SB05	10/11/05	12.09	8.18	94.48	86.30
SB06	10/11/05	12.27	8.56	94.71	86.15
	01/20/06	12.27	7.60	94.71	87.11
	03/28/07	12.27	6.94	94.71	87.77
SB07	10/11/05	12.30	8.86	94.98	86.12
	01/20/06	12.30	7.85	94.98	87.13
	03/28/07	12.30	7.18	94.98	87.80
	02/24/09	12.30	2.63	94.98	92.35
	05/26/09	12.30	0.55	94.98	94.43
	08/31/09	12.30	3.07	94.98	91.91
SB08	01/20/06	12.18	7.79	NM	NM



TABLE 1 (CONTINUED)
GROUNDWATER ELEVATION SUMMARY

FRICK 18 - 2 & 8
WELD COUNTY, COLORADO
NOBLE ENERGY, INC.

Well ID	Date	Total Depth (ft)	Depth to Water (ft)	TOC Elevation (ft)	Groundwater Elevation (relative ft)
SB09	05/28/09	15.04	0.10	NM	NM
	08/31/09	15.04	2.78	NM	NM
SB10R	05/28/09	13.68	0.30	NM	NM
	08/31/09	13.68	1.63	NM	NM
SB11	10/11/05	11.95	7.80	92.87	85.07
	01/20/06	11.95	6.66	92.87	86.21
	03/28/07	11.95	6.06	92.87	86.81
	08/05/08	11.95	4.75	92.87	88.12
	11/24/08	11.95	1.89	92.87	90.98
SB12	10/11/05	11.68	8.23	93.04	84.81
	01/20/06	11.68	6.86	93.04	86.18
	03/28/07	11.68	6.13	93.04	86.91
SB13	10/11/05	11.79	10.23	92.27	82.04
	01/20/06	11.79	9.35	92.27	82.92
	03/28/07	11.79	8.59	92.27	83.86
SB14	10/11/05	12.11	9.95	92.63	82.68
	01/20/06	12.11	9.01	92.63	83.62
	03/28/07	12.11	8.83	92.63	83.80
	08/05/08	12.11	6.07	92.63	86.56
SB15	10/11/05	12.01	10.05	92.80	82.75
	01/20/06	12.01	9.11	92.80	83.69
	03/28/07	12.01	8.95	92.80	83.85
	08/05/08	12.01	7.51	92.80	85.29
	11/24/08	12.01	5.29	92.80	87.51
	02/24/09	12.01	4.41	92.80	88.39
	05/26/09	12.01	0.90	92.80	91.90
	08/31/09	12.01	4.50	92.80	88.30
SB16	10/11/05	12.06	9.27	92.21	82.94
	01/20/06	12.06	8.38	92.21	83.83
	03/28/07	12.06	8.26	92.21	83.95
	08/05/08	12.06	6.96	92.21	85.25
	11/14/08	12.06	5.62	92.21	86.59
	11/24/08	12.06	4.81	92.21	87.40
	02/24/09	12.06	3.92	92.21	88.29
	08/31/09	12.06	4.00	92.21	88.21
SB17	10/11/05	14.56	11.02	101.25	90.23
SB18	10/11/05	12.00	8.66	93.63	84.97
	01/20/06	12.00	7.72	93.63	85.91
SB18R	02/24/09	12.86	3.22	NM	NM
	05/28/09	12.86	0.74	NM	NM
SB19	10/11/05	12.08	9.23	92.37	83.14
	01/20/06	12.08	8.39	92.37	83.98
	03/28/07	12.08	8.27	92.37	84.10



TABLE 1 (CONTINUED)
GROUNDWATER ELEVATION SUMMARY

FRICK 18 - 2 & 8
WELD COUNTY, COLORADO
NOBLE ENERGY, INC.

Well ID	Date	Total Depth (ft)	Depth to Water (ft)	TOC Elevation (ft)	Groundwater Elevation (relative ft)
SB20	10/11/05	13.27	11.54	93.31	81.77
	01/20/06	13.27	8.65	93.31	84.66
	03/28/07	13.27	10.37	93.31	82.94
	08/05/08	13.27	9.38	93.31	83.93
	11/24/08	13.27	7.18	93.31	86.13
	02/24/09	13.30	6.26	93.31	87.05
	05/26/09	13.30	3.00	93.31	90.31
SB21	10/11/05	13.90	9.91	91.36	81.45
	01/20/06	13.90	7.89	91.36	83.47
	03/28/07	13.90	9.60	91.36	81.76
	11/24/08	13.90	5.13	91.36	86.23
SB22	10/11/05	13.93	9.31	90.57	81.26
SB23	10/11/05	13.70	8.40	89.98	81.58
	01/20/06	13.70	7.15	89.98	82.83
	03/28/07	13.70	8.88	89.98	81.10
	11/24/08	13.70	4.19	89.98	85.79
SB24	10/11/05	13.69	8.00	88.90	80.90
	01/20/06	13.69	6.65	88.90	82.25
	03/28/07	13.69	8.58	88.90	80.32
	11/24/08	13.69	3.72	88.90	85.18
SB25	10/11/05	13.77	7.90	88.48	80.58
	11/24/08	13.77	3.58	89.48	85.90
SB26	10/11/05	11.94	8.91	93.85	84.94
SB27	02/24/09	13.35	3.81	NM	NM
	05/26/09	13.35	1.53	NM	NM
	08/31/09	13.35	4.88	NM	NM

Notes:

ft - feet

NM - Not measured

All depths measured from the north side of the top of the casing (TOC).



TABLE 2
GROUNDWATER ANALYTICAL RESULTS - VOLATILE ORGANIC COMPOUNDS

FRICK 18 - 2 & 8
WELD COUNTY, COLORADO
NOBLE ENERGY, INC

Sample ID	Sample Date	Volatile Organic Compounds (ug/L)			
		Benzene	Toluene	Ethylbenzene	Total Xylenes
MW01	10/11/2005	1,200	4.2	150	562
	1/20/2006	1,700	<20	39	337
	3/28/2007	1,200	<20.0	27	260
	8/5/2008	7,770	111	97.6	812.2
	11/14/2008	9,450	129	272	2,858
	11/24/2008	9,210	56.8	50.1	2,573
	2/24/2009	6,130	23.9	65.7	571.7
	5/26/2009	9,680	56.1	633	1,027
	8/31/2009	7,000	2.53	163	763.84
MW02	10/11/2005	390	<1.0	15	285
	1/20/2006	<1.0	<1.0	<1.0	<3.0
	3/28/2007	1.5	<2.0	<2.0	7.2
	8/5/2008	53.8	<1.0	66.7	381.7
	11/24/2008	2.15	<1.0	<1.0	8.1
	2/24/2009	88.5	<1.0	100	655.6
	5/26/2009	65	<1.0	171	1,736.7
	8/31/2009	6.81	<1.0	<1.0	2.72
SB01	6/16/2005	< 1.0	< 1.0	< 1.0	<3.0
SB02	6/16/2005	48	39.8	508	7,160
	10/11/2005	3.6	<1.0	170	7,078
	1/20/2006	<1.0	<1.0	190	586
	3/28/2007	1.2	<2.0	49	38
SB02R	2/24/2009	30.4	1.91	48.9	266.54
	5/26/2009	32.1	<1.0	6.7	48.5
	8/31/2009	183	<1.0	383	3,055
SB03	6/16/2005	630	892	182	2,070
	10/11/2005	4,800	280	280	2,150
	1/20/2006	2,400	38	170	960
	3/28/2007	350	<20.0	230	1,300
	8/5/2008	< 1.0	< 1.0	< 1.0	3.41
	11/24/2008	<1.0	<1.0	<1.0	<3.0
	2/24/2009	<1.0	<1.0	26.6	178
	5/26/2009	<1.0	<1.0	16.9	86.4
	8/31/2009	<1.0	<1.0	8.75	9.01
SB04	6/16/2005	4.8	31.7	46.0	62.6
SB05	6/16/2005	< 1.0	2.9	3.5	41.8
SB06	6/16/2005	9.1	80.3	106	881
	10/11/2005	2.9	<1.0	47	221
	1/20/2006	<1.0	<1.0	16	61.5
	3/28/2007	<1.0	<2.0	<2.0	<6.0
SB07	6/16/2005	7,120	3,090	433	4,610
	10/11/2005	6,400	200	510	1,000
	1/20/2006	3,300	1.2	230	1,698
	3/28/2007	2,100	<100.0	210	1,800
	2/24/2009	<1.0	<1.0	10.4	76.7
	5/26/2009	<1.0	<1.0	<1.0	5.12
	8/31/2009	<1.0	<1.0	9.48	63.8



TABLE 2 (CONTINUED)
GROUNDWATER ANALYTICAL RESULTS - VOLATILE ORGANIC COMPOUNDS

FRICK 18 - 2 & 8
WELD COUNTY, COLORADO
NOBLE ENERGY, INC

Sample ID	Sample Date	Volatile Organic Compounds (ug/L)			
		Benzene	Toluene	Ethylbenzene	Total Xylenes
SB08	6/16/2005	69.0	80.4	15.5	175
	1/20/2006	<1.0	<1.0	<1.0	<3.0
	3/28/2007	<1.0	<2.0	<2.0	<6.0
SB09	6/16/2005	11.1	7.1	2.4	27.8
	1/20/2006	1,800	<1.0	130	1,016
	3/28/2007	68	<2.0	25	200
	2/24/2009	59	<1.0	<1.0	<3.0
	5/28/2009	<1.0	<1.0	<1.0	<3.0
	8/31/2009	<1.0	<1.0	<1.0	<3.0
SB10	6/16/2005	3,260	1,180	211	2,910
	10/11/2005	1,900	450	230	2,030
	1/20/2006	1,900	150	170	1,350
	3/28/2007	1,600	<20.0	190	1,756
	8/5/2008	40.6	<1.0	33.0	68.1
SB10R	2/24/2009	213	<1.0	124	662
	5/28/2009	47.6	<1.0	23	102
	8/31/2009	17.3	<1.0	2.68	5.36
SB11	6/17/2005	17.6	57.4	185	590
	10/14/2005	1.8	<1.0	92	240
	1/20/2006	<1.0	<1.0	15	34
	3/28/2007	<1.0	<2.0	7.9	12
	8/5/2008	<1.0	<1.0	<1.0	<3.0
	11/24/2008	<1.0	<1.0	<1.0	<3.0
SB12	6/17/2005	15.1	28.7	10.2	103
	10/11/2005	1.1	<1.0	<1.0	2.1
	1/20/2006	<1.0	<1.0	<1.0	<3.0
	3/28/2007	<1.0	<2.0	<2.0	<6.0
SB13	6/17/2005	9.2	17.3	6.1	65.4
	10/11/2005	2.4	<1.0	<1.0	4.6
	1/20/2006	<1.0	<1.0	<1.0	<3.0
	3/28/2007	<1.0	<2.0	<2.0	<6.0
SB14	6/17/2005	7.5	15.4	7.0	66.3
	10/11/2005	17	<1.0	54	150
	1/20/2006	1.0	<1.0	5.3	5.6
	3/28/2007	<1.0	<2.0	<2.0	<6.0
	8/5/2008	<1.0	<1.0	<1.0	<3.0
SB15	6/17/2005	21.4	19.0	35.0	812
	10/11/2005	14	<1.0	15	110
	1/20/2006	<1.0	<1.0	5.4	<3.0
	3/28/2007	2.9	<2.0	61.0	101.7
	8/5/2008	<1.0	<1.0	<1.0	<3.0
	11/24/2008	<1.0	<1.0	<1.0	<3.0
	2/24/2009	<1.0	<1.0	2.15	2.73
	5/26/2009	<1.0	<1.0	<1.0	<3.0
	8/31/2009	<1.0	<1.0	<1.0	<3.0

TABLE 2 (CONTINUED)
GROUNDWATER ANALYTICAL RESULTS - VOLATILE ORGANIC COMPOUNDS

FRICK 18 - 2 & 8
WELD COUNTY, COLORADO
NOBLE ENERGY, INC

Sample ID	Sample Date	Volatile Organic Compounds (ug/L)			
		Benzene	Toluene	Ethylbenzene	Total Xylenes
SB16	6/17/2005	7,630	8,210	463	6,770
	10/11/2005	5,400	4,600	470	5,280
	1/20/2006	4,300	4,300	290	3,530
	3/28/2007	2,600	4,400	400	5,860
	8/5/2008	933	86.7	395	3,831
	11/14/2008	<1.0	<1.0	3.31	4.75
	11/24/2008	727	45.9	562	6,906
	2/24/2009	196	13.4	453	5,093
	8/31/2009	4.1	<1.0	111	694
SB17	6/27/2005	< 1.0	< 1.0	< 1.0	< 3.0
SB18	6/17/2005	1,060	190	6.2	870
	10/11/2005	1,000	18	290	2,778
	1/20/2006	41	50	35	700
SB18R	2/24/2009	<1.0	<1.0	103	428.05
	5/28/2009	<1.0	<1.0	8.16	27.6
SB19	6/17/2005	29.9	51.3	9.6	109
	10/11/2005	<1.0	<1.0	<1.0	<3.0
	1/20/2006	<1.0	<1.0	<1.0	<3.0
	3/28/2007	<1.0	<2.0	<2.0	<6.0
SB20	7/18/2005	5,640	< 10	321	4,780
	10/11/2005	2,800	2.0	260	2,500
	1/20/2006	<50	<50	<1.0	2.8
	3/28/2007	140	<2.0	21	130
	8/5/2008	25.3	<1.0	28.9	200.46
	11/24/2008	2.74	<1.0	<1.0	7.98
	2/24/2009	1.12	<1.0	4.26	20.0
	5/26/2009	<1.0	<1.0	<1.0	<3.0
SB21	7/18/2005	209	< 1.0	1.9	22.3
	10/11/2005	11	< 1.0	<1.0	<3.0
	1/20/2006	<1.0	<1.0	<1.0	<3.0
	3/28/2007	<1.0	<2.0	<2.0	<6.0
	11/24/2008	<1.0	<1.0	11.8	49.5
SB22	7/18/2005	< 1.0	< 1.0	< 1.0	3.2
SB23	7/18/2005	13.2	< 1.0	1.5	22.8
	10/11/2005	<1.0	< 1.0	<1.0	<3.0
	1/20/2006	1.0	<1.0	<1.0	<3.0
	3/28/2007	<1.0	<2.0	<2.0	<6.0
	11/24/2008	<1.0	<1.0	<1.0	<3.0
SB24	7/18/2005	21.0	< 1.0	2.7	38.9
	10/11/2005	<1.0	<1.0	<1.0	<3.0
	1/20/2006	<1.0	< 1.0	<1.0	<3.0
	3/28/2007	<1.0	<2.0	<2.0	<6.0
	11/24/2008	<1.0	<1.0	<1.0	<3.0
SB25	7/18/2005	< 1.0	< 1.0	< 1.0	7
	11/24/2008	<1.0	<1.0	<1.0	<3.0
SB26	7/18/2005	1.8	4.7	51.4	648

TABLE 2 (CONTINUED)
GROUNDWATER ANALYTICAL RESULTS - VOLATILE ORGANIC COMPOUNDS

FRICK 18 - 2 & 8
WELD COUNTY, COLORADO
NOBLE ENERGY, INC

Sample ID	Sample Date	Volatile Organic Compounds (ug/L)			
		Benzene	Toluene	Ethylbenzene	Total Xylenes
SB27	2/24/2009	24.7	494	91.9	1,077
	5/26/2009	11.1	188	<1.0	421.9
	8/31/2009	90.5	300	18.6	348.4
Water Well	6/17/2005	< 1.0	< 1.0	< 1.0	< 3.0
	10/11/2005	< 1.0	< 1.0	< 1.0	< 3.0
	1/20/2006	< 1.0	< 1.0	< 1.0	< 3.0
	3/28/2007	<1.0	<2.0	<2.0	<6.0
CDPHE-WQCC Regulation 41 Groundwater Standards		5.0	560	700	1,400

Notes:

ug/L - micrograms per liter

CDPHE-WQCC - Colorado Department of Public Health and Environment Water Quality Control Commission

Bold indicates concentration exceeds CDPHE-WQCC Regulation 41 Groundwater Standards

Analysis by Environmental Protection Agency Method 8260B.

< indicates analytical result is less than the laboratory detection limit

ATTACHMENT 1
LABORATORY ANALYTICAL REPORTS





4640 Pecos Street | Unit C | Denver, Colorado 80211
303.433.1322 Phone 303.265.9645 Fax

September 10, 2009

LT Environmental, Inc.
4600 West 60th Avenue
Arvada CO 80003

Rob Rebel
Project Number: NEP0505
Project: Noble – Frick 18-2&8

Attached are the analytical results for Noble – Frick 18-2&8 received by Origins Laboratory, Inc. 8/31/2009 4:02:00PM. Please let us know if you have any questions, or if we can help with anything at all.

Noelle E Doyle
Laboratory Manager

The analytical results in the following report were analyzed under the guidelines of EPA Methods specified in SW-846. The analytical results apply specifically to the samples and analyses specified per the attached Chain of Custody. This laboratory report is intended solely for the above addressee and it is only to be used and or reproduced in its entirety.

4640 Pecos Street | Unit C
Denver, Colorado 80211
303.433.1322 | Laboratory
303.265.9645 | Fax



LT Environmental, Inc.
4600 West 60th Avenue
Arvada CO 80003

Rob Rebel
Project Number: NEP0505
Project: Noble – Frick 18–2&8

CROSS REFERENCE REPORT

Sample ID	Laboratory ID	Matrix	Sampled	Date Received
MW01	X908117-01	Water	8/31/2009 1:50:00PM	08/31/2009 16:02
MW02	X908117-02	Water	8/31/2009 1:45:00PM	08/31/2009 16:02
SB02R	X908117-03	Water	8/31/2009 2:15:00PM	08/31/2009 16:02
SB03	X908117-04	Water	8/31/2009 2:25:00PM	08/31/2009 16:02
SB07	X908117-05	Water	8/31/2009 1:15:00PM	08/31/2009 16:02
SB09	X908117-06	Water	8/31/2009 1:00:00PM	08/31/2009 16:02
SB10R	X908117-07	Water	8/31/2009 11:45:00AM	08/31/2009 16:02
SB15	X908117-08	Water	8/31/2009 12:00:00PM	08/31/2009 16:02
SB16	X908117-09	Water	8/31/2009 12:30:00PM	08/31/2009 16:02
SB27	X908117-10	Water	8/31/2009 1:30:00PM	08/31/2009 16:02

Origins Laboratory, Inc.

The results in this report apply to the samples analyzed in accordance with the chain of custody document. This analytical report must be reproduced in its entirety.

Noelle E Doyle, Laboratory Manager



Rob Rebel

Project Number: NEP0505

Project: Noble – Frick 18-2&8



ORIGINALS
LABORATORY, INC.

Project Manager- Rob Lebel
Project Name- Frick 18-2
Project Number- NE90505
Samples Collected by- LV/MA

Client- LT ENVIRONMENTAL
Address- 4600 W. 60th Ave
Arvada CO 80003
Telephone Number- 303-433-9788
E-Mail Address- rebel@LTENV.com

[illegible]

4640 North Pecos Street, Unit C | Denver, Colorado 80211 | Laboratory - 303.433.1322 | Fax - 303.265.9645

Naucke

Page 3 of 17

Noelle E Doyle, Laboratory Manager

4640 Pecos Street | Unit C
Denver, Colorado 80211
303.433.1322 | Laboratory
303.265.9645 | Fax



LT Environmental, Inc.
4600 West 60th Avenue
Arvada CO 80003

Rob Rebel
Project Number: NEP0505
Project: Noble – Frick 18–2&8

MW01

X908117–01 (Water)

Analyte	Result	Reporting		Units	Dilution	Batch	Prepared	Analyzed	Notes
		Limit							

Origins Laboratory, Inc.

BTEX by EPA 8260B

Benzene	7.00	0.100	mg/L	100	9103002	09/03/2009	09/04/2009
Toluene	0.00253	0.00100	"	1	"	"	"
Ethylbenzene	0.163	0.00100	"	"	"	"	"
o-Xylene	0.00784	0.00100	"	"	"	"	"
m,p-Xylene	0.756	0.200	"	100	"	"	"

Surrogate: 1,2-Dichloroethane-d4	112 %	85.7–134	"	"	"
Surrogate: Toluene-d8	94.1 %	81.4–121	"	"	"
Surrogate: 4-Bromofluorobenzene	115 %	74.7–127	"	"	"

Origins Laboratory, Inc.

The results in this report apply to the samples analyzed in accordance with the chain of custody document. This analytical report must be reproduced in its entirety.

Noelle E Doyle, Laboratory Manager

4640 Pecos Street | Unit C
Denver, Colorado 80211
303.433.1322 | Laboratory
303.265.9645 | Fax



LT Environmental, Inc.
4600 West 60th Avenue
Arvada CO 80003

Rob Rebel
Project Number: NEP0505
Project: Noble – Frick 18–2&8

MW02

X908117–02 (Water)

Analyte	Result	Reporting		Units	Dilution	Batch	Prepared	Analyzed	Notes
		Limit							

Origins Laboratory, Inc.

BTEX by EPA 8260B

Benzene	0.00681	0.00100	mg/L	1	9103002	09/03/2009	09/04/2009
Toluene	ND	0.00100	"	"	"	"	"
Ethylbenzene	ND	0.00100	"	"	"	"	"
o-Xylene	ND	0.00100	"	"	"	"	"
m,p-Xylene	0.00272	0.00200	"	"	"	"	"

Surrogate: 1,2-Dichloroethane-d4	113 %	85.7–134	"	"	"
Surrogate: Toluene-d8	92.7 %	81.4–121	"	"	"
Surrogate: 4-Bromofluorobenzene	116 %	74.7–127	"	"	"

Origins Laboratory, Inc.

The results in this report apply to the samples analyzed in accordance with the chain of custody document. This analytical report must be reproduced in its entirety.

Noelle E Doyle, Laboratory Manager

4640 Pecos Street | Unit C
Denver, Colorado 80211
303.433.1322 | Laboratory
303.265.9645 | Fax



LT Environmental, Inc.
4600 West 60th Avenue
Arvada CO 80003

Rob Rebel
Project Number: NEP0505
Project: Noble – Frick 18–2&8

SB02R
X908117–03 (Water)

Analyte	Result	Reporting		Units	Dilution	Batch	Prepared	Analyzed	Notes
		Limit							

Origins Laboratory, Inc.

BTEX by EPA 8260B

Benzene	0.183	0.00100	mg/L	1	9103002	09/03/2009	09/04/2009
Toluene	ND	0.00100	"	"	"	"	"
Ethylbenzene	0.383	0.0200	"	20	"	"	09/09/2009
o-Xylene	0.255	0.00100	"	1	"	"	09/04/2009
m,p-Xylene	2.80	0.0400	"	20	"	"	09/09/2009

Surrogate: 1,2-Dichloroethane-d4	105 %	85.7–134	"	"	09/04/2009
Surrogate: Toluene-d8	89.1 %	81.4–121	"	"	"
Surrogate: 4-Bromofluorobenzene	97.6 %	74.7–127	"	"	"

Origins Laboratory, Inc.

The results in this report apply to the samples analyzed in accordance with the chain of custody document. This analytical report must be reproduced in its entirety.

Noelle E Doyle, Laboratory Manager

4640 Pecos Street | Unit C
Denver, Colorado 80211
303.433.1322 | Laboratory
303.265.9645 | Fax



LT Environmental, Inc.
4600 West 60th Avenue
Arvada CO 80003

Rob Rebel
Project Number: NEP0505
Project: Noble – Frick 18–2&8

SB03

X908117–04 (Water)

Analyte	Result	Reporting		Units	Dilution	Batch	Prepared	Analyzed	Notes
		Limit							

Origins Laboratory, Inc.

BTEX by EPA 8260B

Benzene	ND	0.00100	mg/L	1	9103002	09/03/2009	09/09/2009
Toluene	ND	0.00100	"	"	"	"	"
Ethylbenzene	0.00875	0.00100	"	"	"	"	"
o-Xylene	0.00110	0.00100	"	"	"	"	"
m,p-Xylene	0.00791	0.00200	"	"	"	"	"

Surrogate: 1,2-Dichloroethane-d4	107 %	85.7–134	"	"	09/04/2009
Surrogate: Toluene-d8	95.4 %	81.4–121	"	"	"
Surrogate: 4-Bromofluorobenzene	106 %	74.7–127	"	"	"

Origins Laboratory, Inc.

The results in this report apply to the samples analyzed in accordance with the chain of custody document. This analytical report must be reproduced in its entirety.

Noelle E Doyle, Laboratory Manager

4640 Pecos Street | Unit C
Denver, Colorado 80211
303.433.1322 | Laboratory
303.265.9645 | Fax



LT Environmental, Inc.
4600 West 60th Avenue
Arvada CO 80003

Rob Rebel
Project Number: NEP0505
Project: Noble – Frick 18–2&8

SB07

X908117–05 (Water)

Analyte	Result	Reporting		Units	Dilution	Batch	Prepared	Analyzed	Notes
		Limit							

Origins Laboratory, Inc.

BTEX by EPA 8260B

Benzene	ND	0.00100	mg/L	1	9103002	09/03/2009	09/04/2009
Toluene	ND	0.00100	"	"	"	"	"
Ethylbenzene	0.00948	0.00100	"	"	"	"	"
o-Xylene	ND	0.00100	"	"	"	"	"
m,p-Xylene	0.0638	0.00200	"	"	"	"	"

Surrogate: 1,2-Dichloroethane-d4	108 %	85.7–134	"	"	"
Surrogate: Toluene-d8	96.7 %	81.4–121	"	"	"
Surrogate: 4-Bromofluorobenzene	102 %	74.7–127	"	"	"

Origins Laboratory, Inc.

The results in this report apply to the samples analyzed in accordance with the chain of custody document. This analytical report must be reproduced in its entirety.

Noelle E Doyle, Laboratory Manager

4640 Pecos Street | Unit C
Denver, Colorado 80211
303.433.1322 | Laboratory
303.265.9645 | Fax



LT Environmental, Inc.
4600 West 60th Avenue
Arvada CO 80003

Rob Rebel
Project Number: NEP0505
Project: Noble – Frick 18-2&8

SB09

X908117-06 (Water)

Analyte	Result	Reporting		Units	Dilution	Batch	Prepared	Analyzed	Notes
		Limit							

Origins Laboratory, Inc.

BTEX by EPA 8260B

Benzene	ND	0.00100	mg/L	1	9103002	09/03/2009	09/04/2009
Toluene	ND	0.00100	"	"	"	"	"
Ethylbenzene	ND	0.00100	"	"	"	"	"
o-Xylene	ND	0.00100	"	"	"	"	"
m,p-Xylene	ND	0.00200	"	"	"	"	"

Surrogate: 1,2-Dichloroethane-d4	108 %	85.7-134	"	"	"
Surrogate: Toluene-d8	95.5 %	81.4-121	"	"	"
Surrogate: 4-Bromofluorobenzene	112 %	74.7-127	"	"	"

Origins Laboratory, Inc.

The results in this report apply to the samples analyzed in accordance with the chain of custody document. This analytical report must be reproduced in its entirety.

Noelle E Doyle, Laboratory Manager

4640 Pecos Street | Unit C
Denver, Colorado 80211
303.433.1322 | Laboratory
303.265.9645 | Fax



LT Environmental, Inc.
4600 West 60th Avenue
Arvada CO 80003

Rob Rebel
Project Number: NEP0505
Project: Noble – Frick 18–2&8

SB10R

X908117–07 (Water)

Analyte	Result	Reporting		Units	Dilution	Batch	Prepared	Analyzed	Notes
		Limit							

Origins Laboratory, Inc.

BTEX by EPA 8260B

Benzene	0.0173	0.00100	mg/L	1	9103002	09/03/2009	09/04/2009
Toluene	ND	0.00100	"	"	"	"	"
Ethylbenzene	0.00268	0.00100	"	"	"	"	"
o-Xylene	ND	0.00100	"	"	"	"	"
m,p-Xylene	0.00536	0.00200	"	"	"	"	"

Surrogate: 1,2-Dichloroethane-d4	111 %	85.7–134	"	"	"
Surrogate: Toluene-d8	92.6 %	81.4–121	"	"	"
Surrogate: 4-Bromofluorobenzene	110 %	74.7–127	"	"	"

Origins Laboratory, Inc.

The results in this report apply to the samples analyzed in accordance with the chain of custody document. This analytical report must be reproduced in its entirety.

Noelle E Doyle, Laboratory Manager

4640 Pecos Street | Unit C
Denver, Colorado 80211
303.433.1322 | Laboratory
303.265.9645 | Fax



LT Environmental, Inc.
4600 West 60th Avenue
Arvada CO 80003

Rob Rebel
Project Number: NEP0505
Project: Noble – Frick 18–2&8

SB15

X908117–08 (Water)

Analyte	Result	Reporting		Units	Dilution	Batch	Prepared	Analyzed	Notes
		Limit							

Origins Laboratory, Inc.

BTEX by EPA 8260B

Benzene	ND	0.00100	mg/L	1	9103002	09/03/2009	09/04/2009
Toluene	ND	0.00100	"	"	"	"	"
Ethylbenzene	ND	0.00100	"	"	"	"	"
o-Xylene	ND	0.00100	"	"	"	"	"
m,p-Xylene	ND	0.00200	"	"	"	"	"

Surrogate: 1,2-Dichloroethane-d4	110 %	85.7–134	"	"	"
Surrogate: Toluene-d8	93.0 %	81.4–121	"	"	"
Surrogate: 4-Bromofluorobenzene	114 %	74.7–127	"	"	"

Origins Laboratory, Inc.

The results in this report apply to the samples analyzed in accordance with the chain of custody document. This analytical report must be reproduced in its entirety.

Noelle E Doyle, Laboratory Manager

4640 Pecos Street | Unit C
Denver, Colorado 80211
303.433.1322 | Laboratory
303.265.9645 | Fax



LT Environmental, Inc.
4600 West 60th Avenue
Arvada CO 80003

Rob Rebel
Project Number: NEP0505
Project: Noble – Frick 18–2&8

SB16

X908117–09 (Water)

Analyte	Result	Reporting		Units	Dilution	Batch	Prepared	Analyzed	Notes
		Limit							

Origins Laboratory, Inc.

BTEX by EPA 8260B

Benzene	0.00410	0.00100	mg/L	1	9103002	09/03/2009	09/04/2009
Toluene	ND	0.00100	"	"	"	"	"
Ethylbenzene	0.111	0.00100	"	"	"	"	"
o-Xylene	ND	0.00100	"	"	"	"	"
m,p-Xylene	0.694	0.0200	"	10	"	"	09/09/2009

Surrogate: 1,2-Dichloroethane-d4	111 %	85.7–134	"	"	09/04/2009
Surrogate: Toluene-d8	91.9 %	81.4–121	"	"	"
Surrogate: 4-Bromofluorobenzene	101 %	74.7–127	"	"	"

Origins Laboratory, Inc.

The results in this report apply to the samples analyzed in accordance with the chain of custody document. This analytical report must be reproduced in its entirety.

Noelle E Doyle, Laboratory Manager

4640 Pecos Street | Unit C
Denver, Colorado 80211
303.433.1322 | Laboratory
303.265.9645 | Fax



LT Environmental, Inc.
4600 West 60th Avenue
Arvada CO 80003

Rob Rebel
Project Number: NEP0505
Project: Noble – Frick 18–2&8

SB27

X908117–10 (Water)

Analyte	Result	Reporting		Units	Dilution	Batch	Prepared	Analyzed	Notes
		Limit							

Origins Laboratory, Inc.

BTEX by EPA 8260B

Benzene	0.0905	0.00100	mg/L	1	9103002	09/03/2009	09/04/2009
Toluene	0.300	0.100	"	100	"	"	09/09/2009
Ethylbenzene	0.0186	0.00100	"	1	"	"	09/04/2009
o-Xylene	0.0654	0.00100	"	"	"	"	"
m,p-Xylene	0.283	0.00200	"	"	"	"	"

Surrogate: 1,2-Dichloroethane-d4	106 %	85.7–134	"	"	"
Surrogate: Toluene-d8	94.5 %	81.4–121	"	"	"
Surrogate: 4-Bromofluorobenzene	98.7 %	74.7–127	"	"	"

Origins Laboratory, Inc.

The results in this report apply to the samples analyzed in accordance with the chain of custody document. This analytical report must be reproduced in its entirety.

Noelle E Doyle, Laboratory Manager

4640 Pecos Street | Unit C
Denver, Colorado 80211
303.433.1322 | Laboratory
303.265.9645 | Fax



LT Environmental, Inc.
4600 West 60th Avenue
Arvada CO 80003

Rob Rebel
Project Number: NEP0505
Project: Noble – Frick 18–2&8

Volatile Organic Compounds by EPA Method 8260B – Quality Control
Origins Laboratory, Inc.

Analyte	Result	Reporting Limit	Units	Spike Level	Source Result	%REC	%REC Limits	RPD	RPD Limit	Notes
---------	--------	-----------------	-------	-------------	---------------	------	-------------	-----	-----------	-------

Batch 9I03002 – EPA 5030B

Blank (9I03002–BLK1)

Prepared: 09/03/2009 Analyzed: 09/03/2009

Benzene	ND	0.001	mg/L							
Toluene	ND	0.001	"							
Ethylbenzene	ND	0.001	"							
o-Xylene	ND	0.001	"							
m,p-Xylene	ND	0.002	"							
Surrogate: 1,2-Dichloroethane-d4	65.3		ug/L	62.5		104	85.7–134			
Surrogate: Toluene-d8	61.5		"	62.5		98.4	81.4–121			
Surrogate: 4-Bromofluorobenzene	70.3		"	62.5		113	74.7–127			

Blank (9I03002–BLK2)

Prepared: 09/03/2009 Analyzed: 09/03/2009

Benzene	ND	0.001	mg/L							
Toluene	ND	0.001	"							
Ethylbenzene	ND	0.001	"							
o-Xylene	ND	0.001	"							
m,p-Xylene	ND	0.002	"							
Surrogate: 1,2-Dichloroethane-d4	65.4		ug/L	62.5		105	85.7–134			
Surrogate: Toluene-d8	61.4		"	62.5		98.3	81.4–121			
Surrogate: 4-Bromofluorobenzene	73.8		"	62.5		118	74.7–127			

LCS (9I03002–BS1)

Prepared: 09/03/2009 Analyzed: 09/03/2009

Benzene	0.04	0.001	mg/L	0.0500		89.8	74.9–126			
Toluene	0.04	0.001	"	0.0500		83.2	73.3–128			
Surrogate: 1,2-Dichloroethane-d4	67.2		ug/L	62.5		107	85.7–134			
Surrogate: Toluene-d8	59.2		"	62.5		94.8	81.4–121			
Surrogate: 4-Bromofluorobenzene	72.3		"	62.5		116	74.7–127			

LCS (9I03002–BS2)

Prepared: 09/03/2009 Analyzed: 09/03/2009

Benzene	0.05	0.001	mg/L	0.0500		90.2	74.9–126			
Toluene	0.05	0.001	"	0.0500		90.2	73.3–128			

Origins Laboratory, Inc.

The results in this report apply to the samples analyzed in accordance with the chain of custody document. This analytical report must be reproduced in its entirety.

Noelle E Doyle, Laboratory Manager

4640 Pecos Street | Unit C
Denver, Colorado 80211
303.433.1322 | Laboratory
303.265.9645 | Fax



LT Environmental, Inc.
4600 West 60th Avenue
Arvada CO 80003

Rob Rebel
Project Number: NEP0505
Project: Noble – Frick 18-2&8

Volatile Organic Compounds by EPA Method 8260B – Quality Control
Origins Laboratory, Inc.

Analyte	Result	Reporting Limit	Units	Spike Level	Source Result	%REC	%REC Limits	RPD	RPD Limit	Notes
---------	--------	-----------------	-------	-------------	---------------	------	-------------	-----	-----------	-------

Batch 9I03002 – EPA 5030B

LCS (9I03002-BS2)

Prepared: 09/03/2009 Analyzed: 09/03/2009

Surrogate: 1,2-Dichloroethane-d4	66.7		ug/L	62.5		107	85.7-134
Surrogate: Toluene-d8	60.1		"	62.5		96.2	81.4-121
Surrogate: 4-Bromofluorobenzene	72.5		"	62.5		116	74.7-127

Matrix Spike (9I03002-MS1)

Source: X908117-05

Prepared: 09/03/2009 Analyzed: 09/03/2009

Benzene	0.05	0.001	mg/L	0.0500	0.0009	89.4	78.1-132
Toluene	0.04	0.001	"	0.0500	ND	77.4	71.7-124
Surrogate: 1,2-Dichloroethane-d4	66.7		ug/L	62.5		107	85.7-134
Surrogate: Toluene-d8	60.7		"	62.5		97.1	81.4-121
Surrogate: 4-Bromofluorobenzene	67.7		"	62.5		108	74.7-127

Matrix Spike (9I03002-MS2)

Source: X908117-06

Prepared: 09/03/2009 Analyzed: 09/03/2009

Benzene	0.04	0.001	mg/L	0.0500	ND	87.5	78.1-132
Toluene	0.04	0.001	"	0.0500	ND	81.4	71.7-124
Surrogate: 1,2-Dichloroethane-d4	67.0		ug/L	62.5		107	85.7-134
Surrogate: Toluene-d8	60.6		"	62.5		96.9	81.4-121
Surrogate: 4-Bromofluorobenzene	71.7		"	62.5		115	74.7-127

Matrix Spike Dup (9I03002-MSD1)

Source: X908117-05

Prepared: 09/03/2009 Analyzed: 09/03/2009

Benzene	0.04	0.001	mg/L	0.0500	0.0009	87.4	78.1-132	2.21	24.8
Toluene	0.04	0.001	"	0.0500	ND	78.6	71.7-124	1.54	25
Surrogate: 1,2-Dichloroethane-d4	67.0		ug/L	62.5		107	85.7-134		
Surrogate: Toluene-d8	61.0		"	62.5		97.6	81.4-121		
Surrogate: 4-Bromofluorobenzene	66.3		"	62.5		106	74.7-127		

Matrix Spike Dup (9I03002-MSD2)

Source: X908117-06

Prepared: 09/03/2009 Analyzed: 09/03/2009

Benzene	0.05	0.001	mg/L	0.0500	ND	90.8	78.1-132	3.73	24.8
Toluene	0.04	0.001	"	0.0500	ND	82.2	71.7-124	1.08	25
Surrogate: 1,2-Dichloroethane-d4	66.8		ug/L	62.5		107	85.7-134		

Origins Laboratory, Inc.

The results in this report apply to the samples analyzed in accordance with the chain of custody document. This analytical report must be reproduced in its entirety.

Noelle E Doyle, Laboratory Manager

4640 Pecos Street | Unit C
Denver, Colorado 80211
303.433.1322 | Laboratory
303.265.9645 | Fax



LT Environmental, Inc.
4600 West 60th Avenue
Arvada CO 80003

Rob Rebel
Project Number: NEP0505
Project: Noble – Frick 18–2&8

Volatile Organic Compounds by EPA Method 8260B – Quality Control
Origins Laboratory, Inc.

Analyte	Result	Reporting Limit	Units	Spike Level	Source Result	%REC Limits	RPD	RPD Limit	Notes
---------	--------	--------------------	-------	----------------	------------------	----------------	-----	--------------	-------

Batch 9I03002 – EPA 5030B

Matrix Spike Dup (9I03002–MSD2)

Source: X908117–06

Prepared: 09/03/2009 Analyzed: 09/03/2009

Surrogate: Toluene-d8	60.5	ug/L	62.5	96.7	81.4–121
Surrogate: 4–Bromofluorobenzene	70.9	"	62.5	113	74.7–127

Origins Laboratory, Inc.

The results in this report apply to the samples analyzed in accordance with the chain of custody document. This analytical report must be reproduced in its entirety.

Noelle E Doyle, Laboratory Manager

4640 Pecos Street | Unit C
Denver, Colorado 80211
303.433.1322 | Laboratory
303.265.9645 | Fax



LT Environmental, Inc.
4600 West 60th Avenue
Arvada CO 80003

Rob Rebel
Project Number: NEP0505
Project: Noble – Frick 18-2&8

Notes and Definitions

ND Analyte NOT DETECTED at or above the reporting limit
RPD Relative Percent Difference

Origins Laboratory, Inc.

The results in this report apply to the samples analyzed in accordance with the chain of custody document. This analytical report must be reproduced in its entirety.

Noelle E Doyle, Laboratory Manager