

Steil Surveying Services, LLC

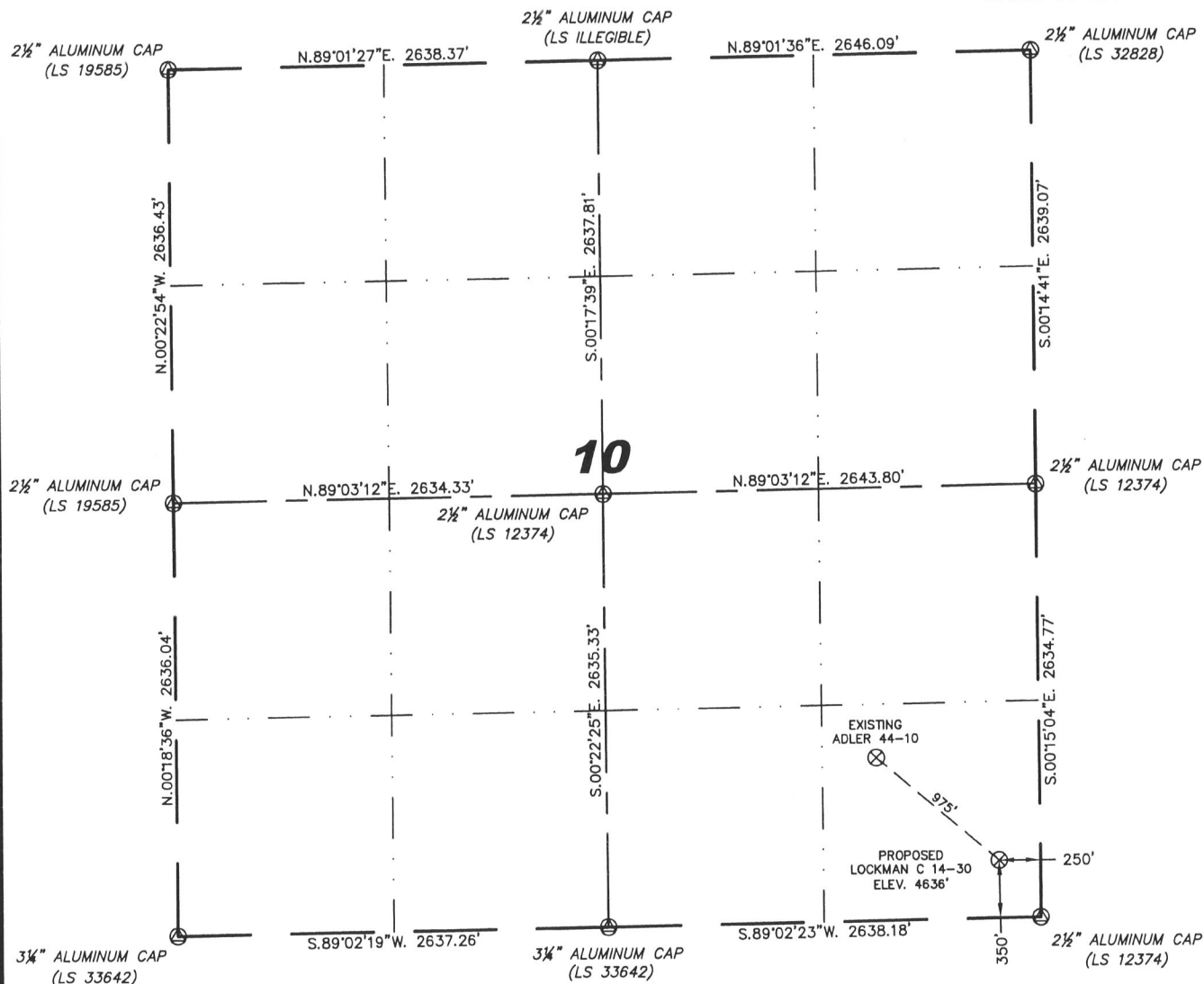
1102 West 19th Street P.O. BOX 2073

Cheyenne, Wyoming 82009

WELL LOCATION CERTIFICATE

THIS MAP DOES NOT REPRESENT A BOUNDARY SURVEY

SECTION 10
TOWNSHIP 4 NORTH
RANGE 64 WEST



0 1000'

Scale: 1" = 1000'

IN ACCORDANCE WITH A REQUEST FROM JACK FINCHAM - NOBLE ENERGY INC, STEIL SURVEYING SERVICES, LLC HAS DETERMINED THE LOCATION OF THE LOCKMAN C 14-30 WELL TO BE 350' FSL, 250' FEL, AS MEASURED AT NINETY (90) DEGREES FROM THE SECTION LINES, SECTION 10, TOWNSHIP 4 NORTH, RANGE 64 WEST, 6TH PRINCIPLE MERIDIAN, WELD COUNTY, COLORADO.

I HEREBY CERTIFY THAT THIS WELL LOCATION CERTIFICATE WAS PREPARED BY ME, OR UNDER MY DIRECT SUPERVISION, THAT THE FIELD WORK WAS COMPLETED ON 05/28/2009, FOR AND ON BEHALF OF NOBLE ENERGY INC, THAT IT IS NOT A LAND SURVEY PLAT OR AN IMPROVEMENT SURVEY PLAT, AND THAT IT IS NOT TO BE RELIED UPON FOR ESTABLISHMENT OF FENCE, BUILDING, OR OTHER FUTURE IMPROVEMENT LINES.

NOTES:

- 1) BASIS OF BEARINGS FOR THIS MAP ARE BASED UPON GPS OBSERVATIONS MADE ON 10/18/2007 BETWEEN MONUMENTS LOCATED AT THE SOUTHEAST SECTION CORNER AND THE NORTHEAST SECTION CORNER OF SAID SECTION AND WITH ALL BEARINGS SHOWN HEREON RELATIVE THERETO.
- 2) ELEVATIONS ARE BASED UPON NGS OPUS SOLUTION NAVD 88 DATUM.
- 3) THE NEAREST EXISTING WELL IS: ADLER 44-10, 975' NORTHWEST
- 4) SEE VISIBLE IMPROVEMENTS EXHIBIT FOR ALL IMPROVEMENTS WITHIN 400'.
- 5) THE LOCATION FALLS IN IRRIGATED CROP LAND.

LATITUDE & LONGITUDE (NAD 83 SURFACE HOLE):

LATITUDE: N 40.32066°

LONGITUDE: W 104.52809°

PDOP: 2.0

1/4, 1/4: SE/SE

NEAREST PROPERTY LINE: 250' TO THE EAST

LEGEND

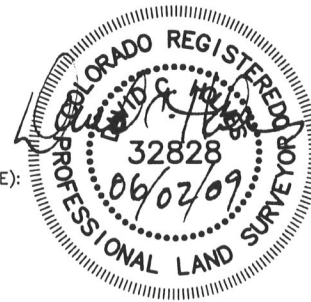
- ⊙ FOUND SURVEY MONUMENT PER
MONUMENT RECORD - EXCEPTIONS NOTED.
- (C) CALCULATED DIMENSION

NOTICE: According to Colorado law you MUST commence any legal action based upon any defect in this W.L.C. within three years after you first discover such defect. In no event may any action based upon any defect in this W.L.C. be commenced more than ten years from this sold date of the certification shown hereon.

David C. Holmes
Professional Land Surveyor Registration No. 32828
State of Colorado

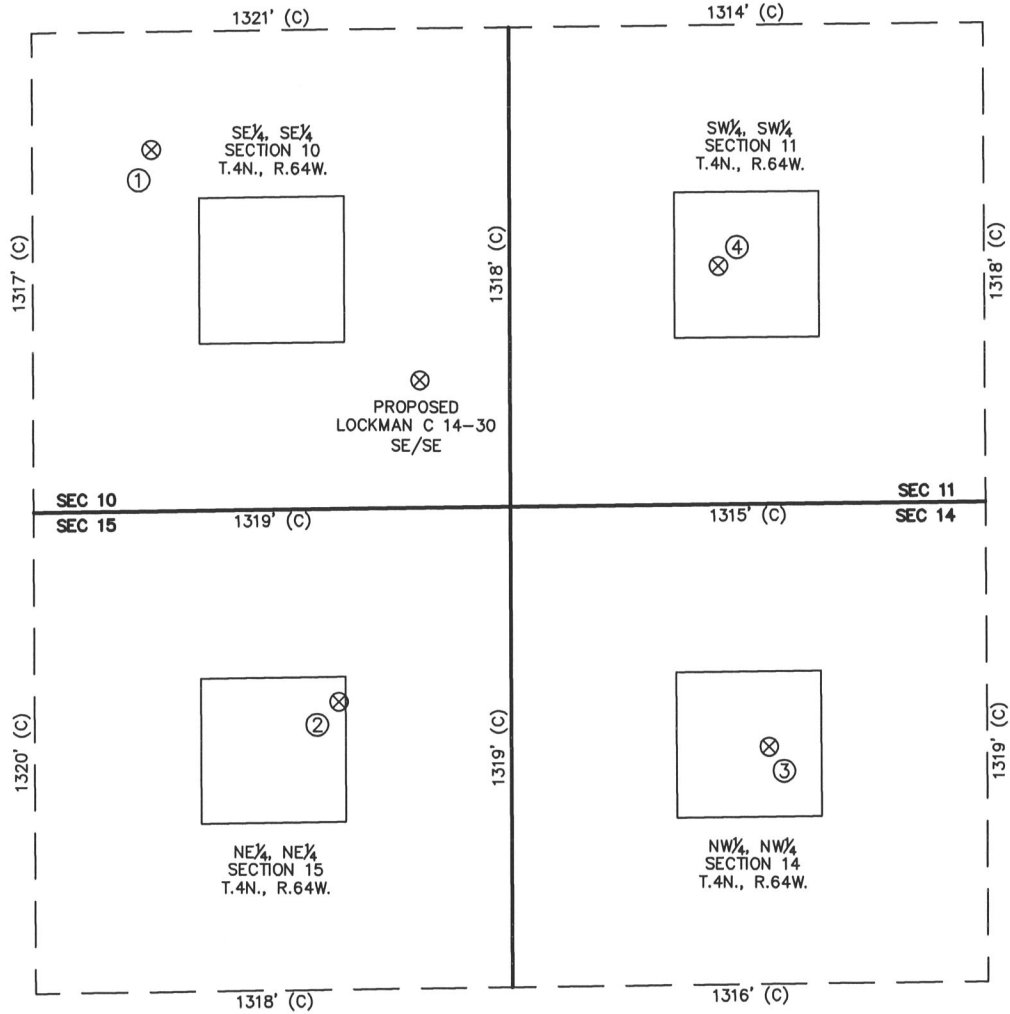
JOB #: 07086

Completed 06/02/2009

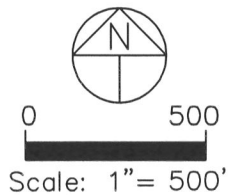


SITE SKETCH – LOCKMAN C 14–30

SECTION 10
TOWNSHIP 4 NORTH
RANGE 64 WEST



①	②	③	④	⑤	⑥	⑦	⑧
ADLER 44-10 SE/SE SEC. 10 993' FSL 991' FEL EL 4633' N 40.32241 E 104.53074 PDOP 2.0	BOCKIUS 15-1 NE/NE SEC. 15 529' FNL 477' FEL EL 4638' N 40.31824 E 104.52893 PDOP 1.9	WILMOTH 14-3 NW/NW SEC. 14 663' FNL 714' FWL EL 4640' N 40.31788 E 104.52466 PDOP 2.2	FOOS C 11-13 SW/SW SEC. 11 659' FSL 579' FWL EL 4637' N 40.32151 E 104.52511 PDOP 2.3				



NOTES:

- THIS SKETCH DOES NOT REPRESENT A BOUNDARY SURVEY.
- THE DATUM FOR THE LATITUDES AND LONGITUDES ON THIS SKETCH IS NAD83.