

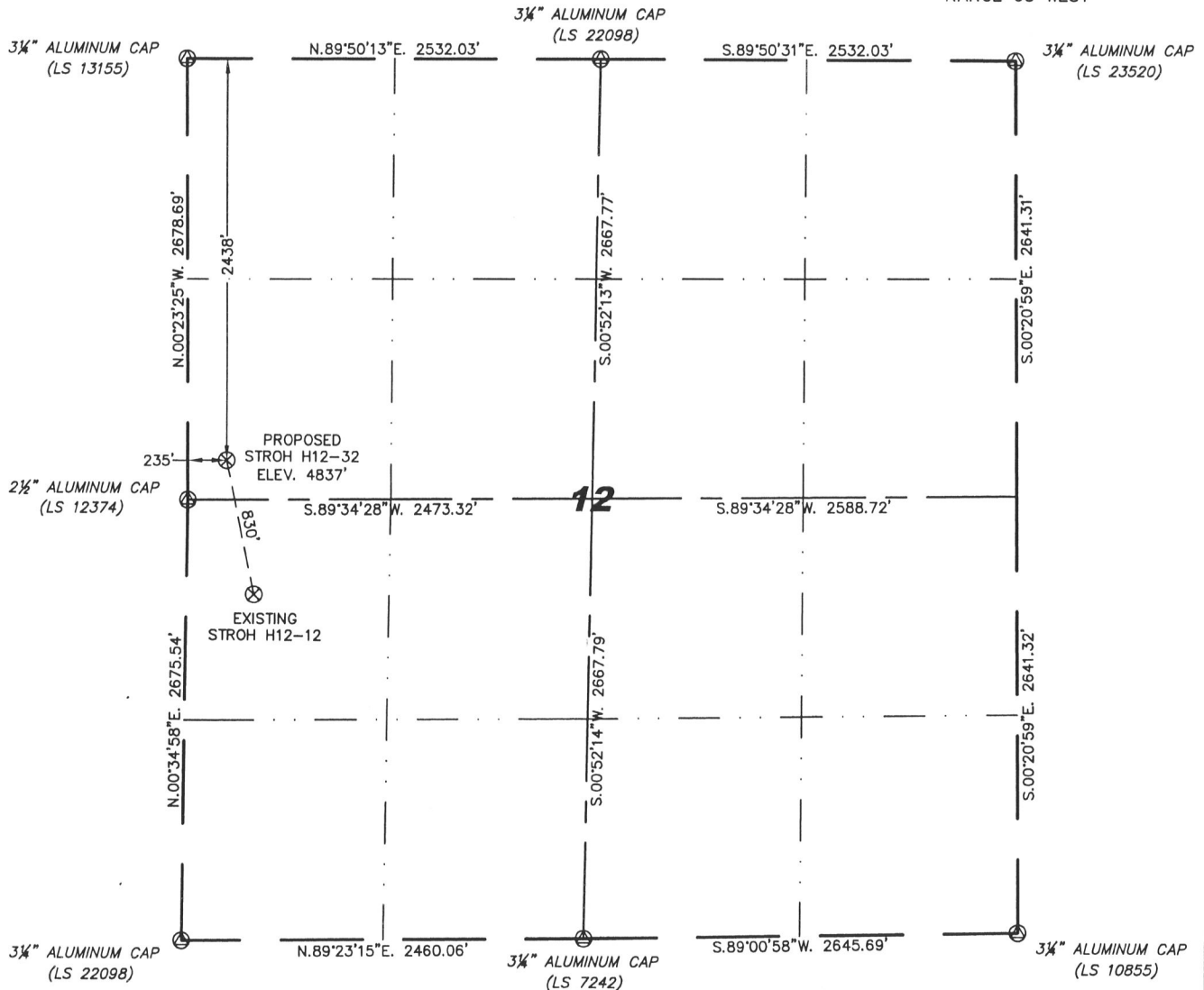
Steil Surveying Services, LLC

1102 West 19th Street P.O. BOX 2073

Cheyenne, Wyoming 82009

WELL LOCATION CERTIFICATE
THIS MAP DOES NOT REPRESENT A BOUNDARY SURVEY

SECTION 12
TOWNSHIP 3 NORTH
RANGE 65 WEST



0 1000
Scale: 1" = 1000'

IN ACCORDANCE WITH A REQUEST FROM JACK FINCHAM - NOBLE ENERGY INC., STEIL SURVEYING SERVICES, LLC HAS DETERMINED THE LOCATION OF THE STROH H12-32 WELL TO BE 2438' FNL, 235' FWL, AS MEASURED AT NINETY (90) DEGREES FROM THE SECTION LINES, SECTION 12, TOWNSHIP 3 NORTH, RANGE 65 WEST, 6TH PRINCIPLE MERIDIAN, WELD COUNTY, COLORADO.

I HEREBY CERTIFY THAT THIS WELL LOCATION CERTIFICATE WAS PREPARED BY ME, OR UNDER MY DIRECT SUPERVISION, THAT THE FIELD WORK WAS COMPLETED ON 05/06/2009, FOR AND ON BEHALF OF NOBLE ENERGY INC., THAT IT IS NOT A LAND SURVEY PLAT OR AN IMPROVEMENT SURVEY PLAT, AND THAT IT IS NOT TO BE RELIED UPON FOR ESTABLISHMENT OF FENCE, BUILDING, OR OTHER FUTURE IMPROVEMENT LINES.

NOTES:

- 1) BASIS OF BEARINGS FOR THIS MAP ARE BASED UPON GPS OBSERVATIONS MADE ON 01/18/2008 BETWEEN MONUMENTS LOCATED AT THE SOUTHEAST SECTION CORNER AND THE NORTHEAST SECTION CORNER OF SAID SECTION AND WITH ALL BEARINGS SHOWN HEREON RELATIVE THERETO.
- 2) ELEVATIONS ARE BASED UPON NGS OPUS SOLUTION NAVD 88 DATUM.
- 3) THE NEAREST EXISTING WELL IS: STROH H12-12, 830' SOUTHEAST.
- 4) SEE VISIBLE IMPROVEMENTS EXHIBIT FOR ALL IMPROVEMENTS WITHIN 400'.
- 5) THE LOCATION FALLS IN PASTURE LAND.

LATITUDE & LONGITUDE (NAD 83 SURFACE HOLE):
LATITUDE: N 40.24043°
LONGITUDE: W 104.61984°
PDOP: 1.9
QUARTER-QUARTER: SW/4NW/4
NEAREST PROPERTY LINE: 235' TO THE WEST

LEGEND

- ⊙ FOUND SURVEY MONUMENT PER MONUMENT RECORD - EXCEPTIONS NOTED.
- (C) CALCULATED DIMENSION

NOTICE: According to Colorado law you MUST commence any legal action based upon any defect in this W.L.C. within three years after you first discover such defect. In no event may any action based upon any defect in this W.L.C. be commenced more than ten years from this sold date of the certification shown hereon.



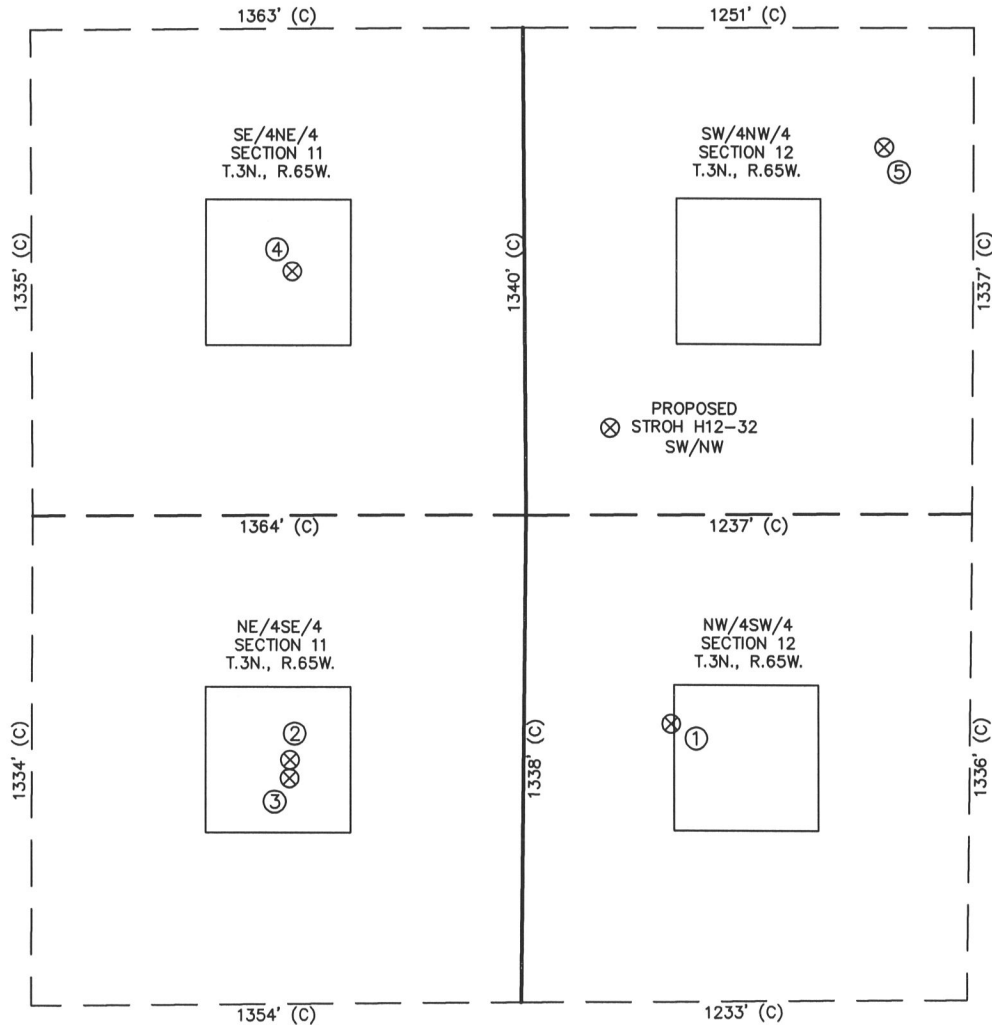
David C. Holmes
Professional Land Surveyor Registration No. 32828
State of Colorado

JOB #: 09086

Completed 05/13/2009

SITE SKETCH – STROH H12-32

SECTION 12
TOWNSHIP 3 NORTH
RANGE 65 WEST



①	②	③	④	⑤
STROH H12-12 NW/SW SEC. 12 2099' FSL 408' FWL EL 4842' N 40.23820 W 104.61927 PDOP 2.2	HSR-PORTER 9-11 NE/SE SEC. 11 1999' FSL 646' FEL EL 4828' N 40.23794 W 104.62305 PDOP 2.3	ARISTOCRAT 39-11D NE/SE SEC. 11 1949' FSL 647' FEL EL 4829' N 40.23780 W 104.62306 PDOP 2.3	ARISTOCRAT 11-1 SE/NE SEC. 11 2003' FNL 642' FEL EL 4828' N 40.24163 W 104.62298 PDOP 2.2	STROH H12-5 SW/NW SEC. 12 1665' FNL 1000' FWL EL 4846' N 40.24254 W 104.61710 PDOP 2.2

NOTES:

- THIS SKETCH DOES NOT REPRESENT A BOUNDARY SURVEY.
- THE DATUM FOR THE LATITUDES AND LONGITUDES ON THIS SKETCH IS NAD83.

