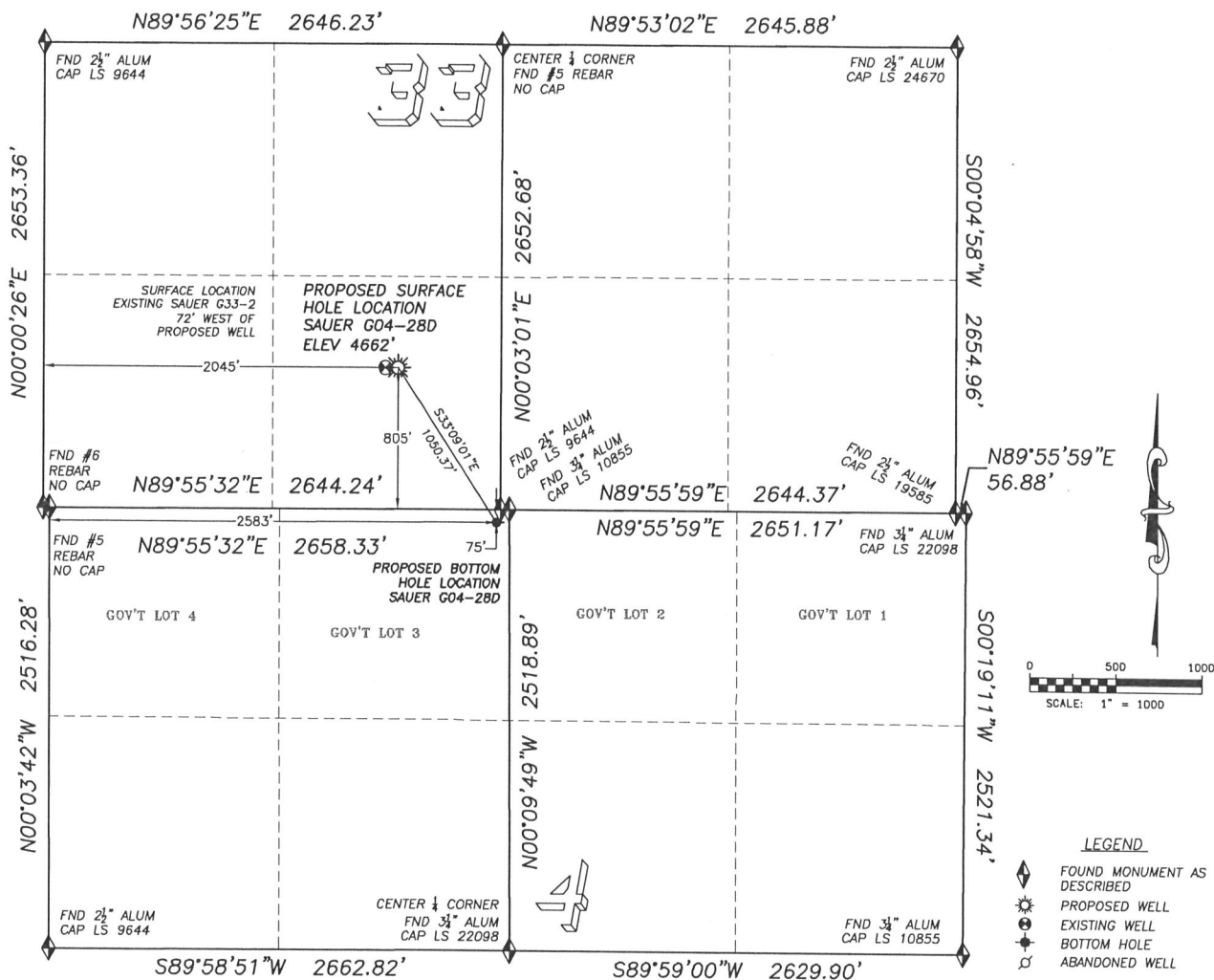


303 953 9841

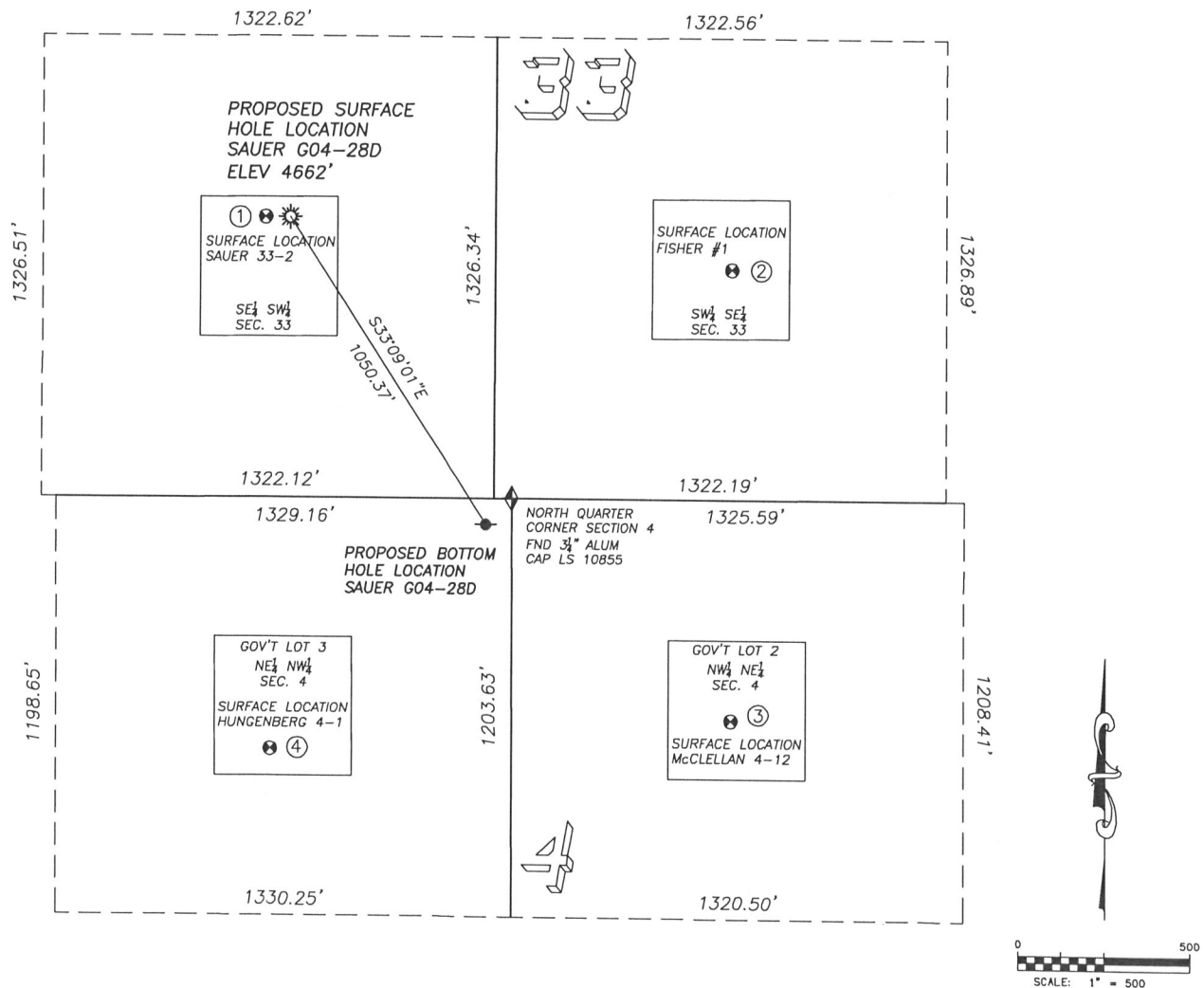
SECTION 33, TOWNSHIP 5 NORTH, RANGE 65 WEST OF THE 6TH PRINCIPLE MERIDIAN



FOR AND ON BEHALF OF
DALEY LAND SURVEYING INC.,
Robert Daley, PLS 35597

SITE SKETCH SAUER G04-28D

SECTION 33, TOWNSHIP 5 NORTH, RANGE 65 WEST OF THE 6TH PRINCIPLE MERIDIAN



①

SAUER 33-2
SE/SW SEC. 33
805' FSL, 1973' FWL
1091' NW OF PROPOSED
BOTTOM HOLE LOCATION
LAT. N40.35069°
LONG. W104.67078°
EL: 4661'
PDOP 3.6

②

FISHER #1
SW/SE SEC. 33
661' FSL, 1952' FEL
1029' NE OF PROPOSED
BOTTOM HOLE LOCATION
LAT. N40.35030°
LONG. W104.66588°
EL: 4666'
PDOP 2.3

③

McCLELLAN 4-12
GOV'T LOT 2
(NW/NE) SEC. 4
636 FNL, 2004' FEL
910' SE OF PROPOSED
BOTTOM HOLE LOCATION
LAT. N40.34674°
LONG. W104.66588°
EL: 4669'
PDOP 1.8

④

HUNGENBERG 4-1
GOV'T LOT 3
(NE/NW) SEC. 4
723' FNL, 1957' FWL
901' SW OF PROPOSED
BOTTOM HOLE LOCATION
LAT. N40.34650°
LONG. W104.67070°
EL: 4673'
PDOP 2.2

LEGEND

- FOUND MONUMENT
AS DESCRIBED
- PROPOSED WELL
- EXISTING WELL
- PROPOSED BOTTOM
HOLE LOCATION

NOTES:

- 1) THIS DOES NOT REPRESENT A BOUNDARY SURVEY
- 2) THE LATITUDES AND LONGITUDES SHOWN ARE REFERENCED TO NAD83
- 3) DATUM FOR ELEVATION IS NAVD88. ELEVATIONS ARE DERIVED FROM GPS-RTK OBSERVATIONS PROCESSED THROUGH OPUS, UTILIZING THE GEOID03 MODEL.