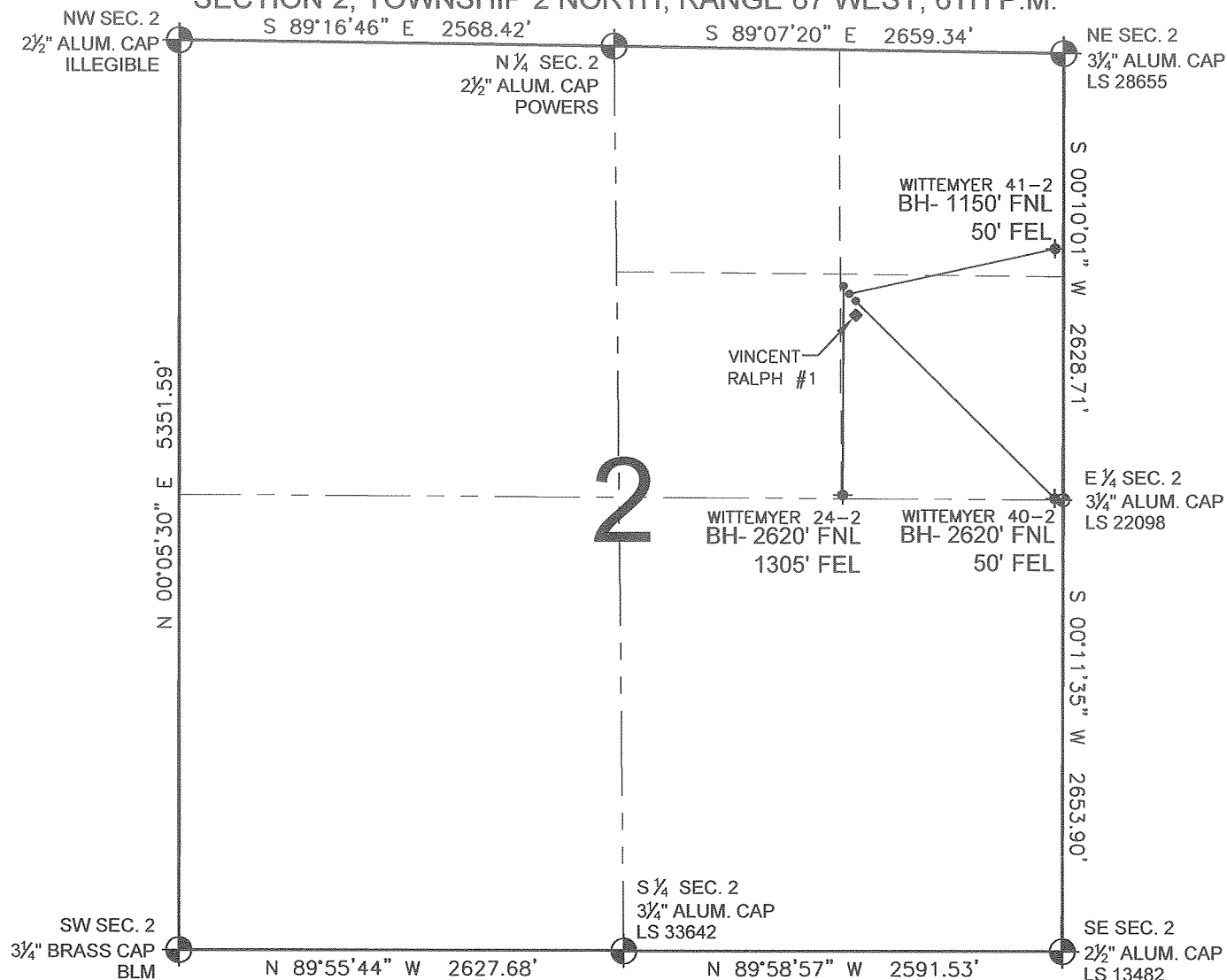


# PAD DRAWING - WITTEMYER 3 PAD

SECTION 2, TOWNSHIP 2 NORTH, RANGE 67 WEST, 6TH P.M.



## NOTES:

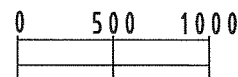
1. THIS SURVEY WAS DONE BY GPS METHODS AND CONFORMS TO THE MINIMUM STANDARDS SET BY THE C.O.G.C.C., RULE NO. 215
2. ELEVATIONS SHOWN AT THE WELL HEAD, AS WELL AS HORIZONTAL CONTROL, ARE BASED ON GPS-RTK VALUES DERIVED FROM DOING 2-HOUR STATIC GPS SESSIONS AND REDUCTIONS USING O.P.U.S. SOLUTIONS.  
VERTICAL = NAVD88; HORIZONTAL = NAD83/92
3. THE BEARINGS SHOWN HEREON ARE BASED ON GPS OBSERVATIONS BETWEEN THE MONUMENTS SHOWN HEREON AS FOUND ON THE FIELD DATE BELOW.
4. DISTANCES SHOWN ARE AT GROUND LEVEL, AS MEASURED IN THE FIELD, WITH TIES TO WELLS MEASURED AT A PERPENDICULAR TO SECTION LINES.

## LEGEND


- = EXISTING MONUMENT    
 = BOTTOM HOLE    
 BH= BOTTOM HOLE  
 = PROPOSED WELL    
 = EXISTING WELL

## NOTES:

WITTEMYER 24-2 TO BE AT 1428' FNL, 1264' FEL.  
 BOTTOM HOLE AT 2620' FNL & 1305' FEL.  
 WITTEMYER 41-2 TO BE AT 1452' FNL, 1247' FEL.  
 BOTTOM HOLE AT 1150' FNL & 50' FEL.  
 WITTEMYER 40-2 TO BE AT 1476' FNL, 1229' FEL.  
 BOTTOM HOLE AT 2620' FNL & 50' FEL.  
 VINCENT RALPH #1 IS 1525' FNL, 1229' FEL.



SCALE: 1"=1000'

REVISIONS		PREPARED BY:	
INITIAL	DATE		
		KERR-MCGEE OIL & GAS ONSHORE LP FIELD DATE: 08-10-09 PAD NAME: WITTEMYER 3 PAD DRAWING DATE: 08-11-09 SURFACE LOCATION: WELD COUNTY, COLORADO SE 1/4 NE 1/4, SEC. 2, T2N, R67W	BY: SMF

**PFS**  
 Petroleum Field Services, LLC  
 1801 W. 13th Ave.  
 Denver, CO 80204