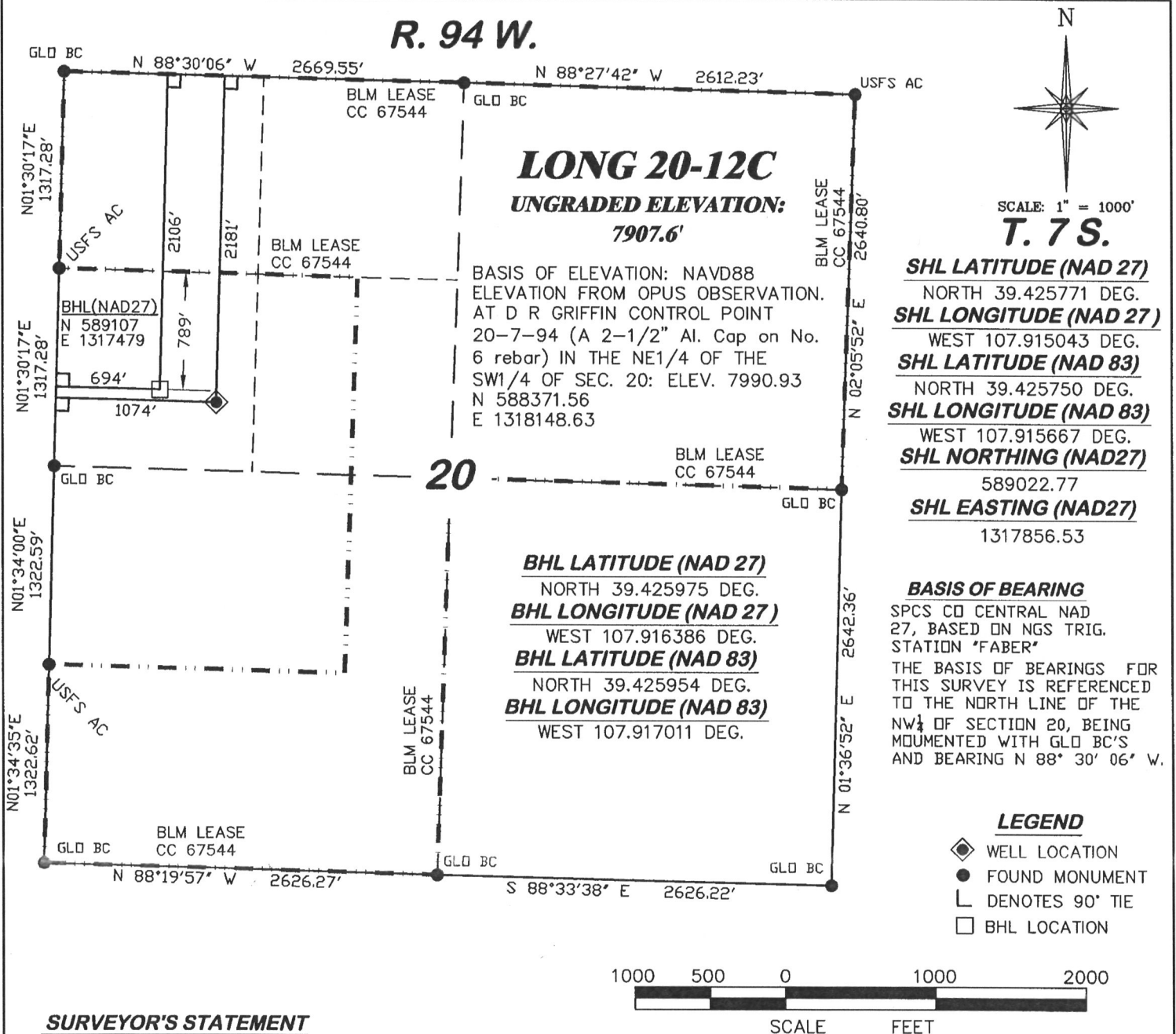


R. 94 W.



**SURVEYOR'S STATEMENT**

I, Ronald C. Rennke, an employee and agent on behalf of D.R. GRIFFIN & ASSOCIATES, INC. state the plat hereon is a correct representation of a survey made under my supervision on September 18, 2008 of the shown LONG 20-12C staked on the ground as shown hereon.

**NOTES**

GPS OPERATOR RICHARD BULLEN OBSERVED A PDOP OF 2.5.

ALL GPS OBSERVATIONS ARE IN COMPLIANCE WITH COGCC RULE NO. 215.

HIGH PLATEAU DESERT  
2-TRACK ROAD WITHIN  
400' RADIUS OF WELL SITE SEE EXHIBIT 2.  
SURFACE USE IS NATIVE WOODS

EXHIBIT 1

8/17/09  
*Ronald C. Rennke*  
COLORADO PLS No. 37065

**DGR** RIFFIN & ASSOCIATES, INC.  
(307) 382-5028 1414 ELK ST., ROCK SPRINGS, WY 82901

**PLAT OF DRILLING LOCATION  
FOR  
NOBLE ENERGY, INC.**

DATE DRAWN: 9/22/08-RAB

SCALE: 1" = 1000'

REVISED: 6/08/09-WWG

JOB No. 15455

INCREASE IMPROVEMENT  
RADIUS - 400'

EXHIBIT 1

**2181' F/NL & 1074' F/WL, SECTION 20,  
T. 7 S., R. 94 W., 6th P.M.  
GARFIELD COUNTY, COLORADO**