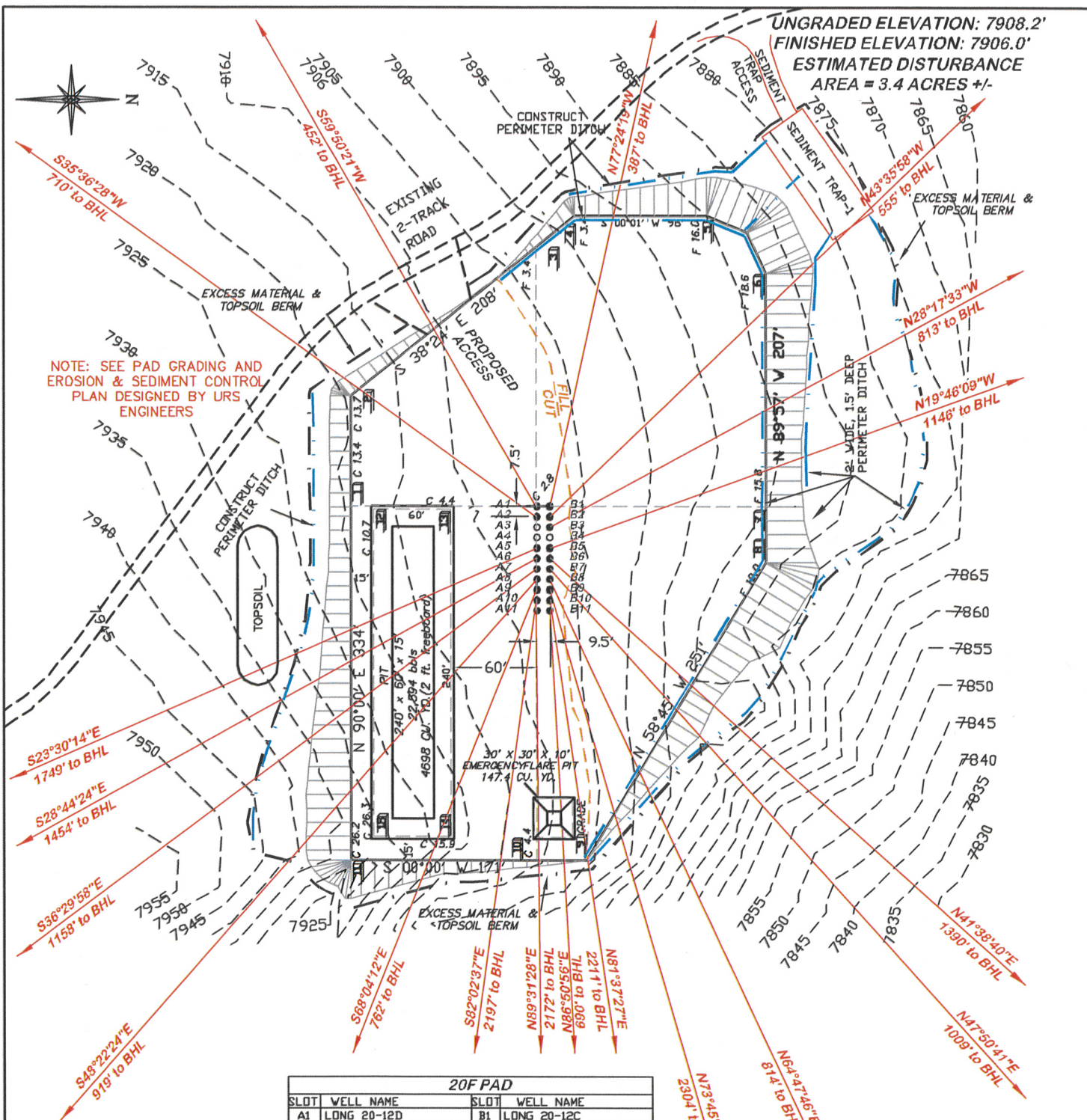


RIFFIN & ASSOCIATES, INC.
1414 ELK ST., ROCK SPRINGS, WY 82901

(307) 362-5028

DRAWN: 9/25/08 - RAB		SCALE: 1" = 100'		NOBLE ENERGY, INC.	
REVISED: n/a		DRG JOB No. 15455		RULISON FEDERAL 20-11D, 20-21D, 20-32A, 20-33B, 20-32C, & 20-32D; LONG 20-12A, 20-12B, 20-12C, 20-12D, 20-13A, 20-22A, 20-22B, 20-22C, 20-22D, 20-23A, 20-23B, 20-23C, 20-23D	
EXHIBIT 2		ESTIMATED EARTHWORK			
		ITEM	CUT	FILL	TOPSOIL
		PAD	18172 CY	16438 CY	3394 CY
		PIT	5750 CY		5750 CY
		TOTALS	23922 CY	16438 CY	4090 CY



**BEFORE DIGGING
CALL FOR
UTILITY LINE LOCATION**

NOTE: THE EARTH QUANTIES ON
THIS DRAWING ARE ESTIMATED
AND THE USE OF IS AT THE
RESPONSIBILITY OF THE USER.

20F PAD			
SLOT	WELL NAME	SLOT	WELL NAME
A1	LONG 20-12D	B1	LONG 20-12C
A2	LONG 20-13A	B2	LONG 20-12B
A3	OPEN	B3	LONG 20-12A
A4	OPEN	B4	OPEN
A5	LONG 20-23D	B5	RULISON FED. 20-11D
A6	LONG 20-23C	B6	RULISON FED. 20-21D
A7	LONG 20-23B	B7	LONG 20-22A
A8	LONG 20-23A	B8	LONG 20-22B
A9	LONG 20-22D	B9	RULISON FED. 20-32A
A10	RULISON FED. 20-32D	B10	RULISON FED. 20-32B
A11	RULISON FED. 20-32C	B11	LONG 20-22C



RIFFIN & ASSOCIATES, INC.
 (307) 362-5028 1414 ELK ST., ROCK SPRINGS, WY 82901

DRAWN: 9/25/08 - RAB	SCALE: 1" = 100'
REVISED: n/a	DRG JOB No. 15455
	EXHIBIT 2A

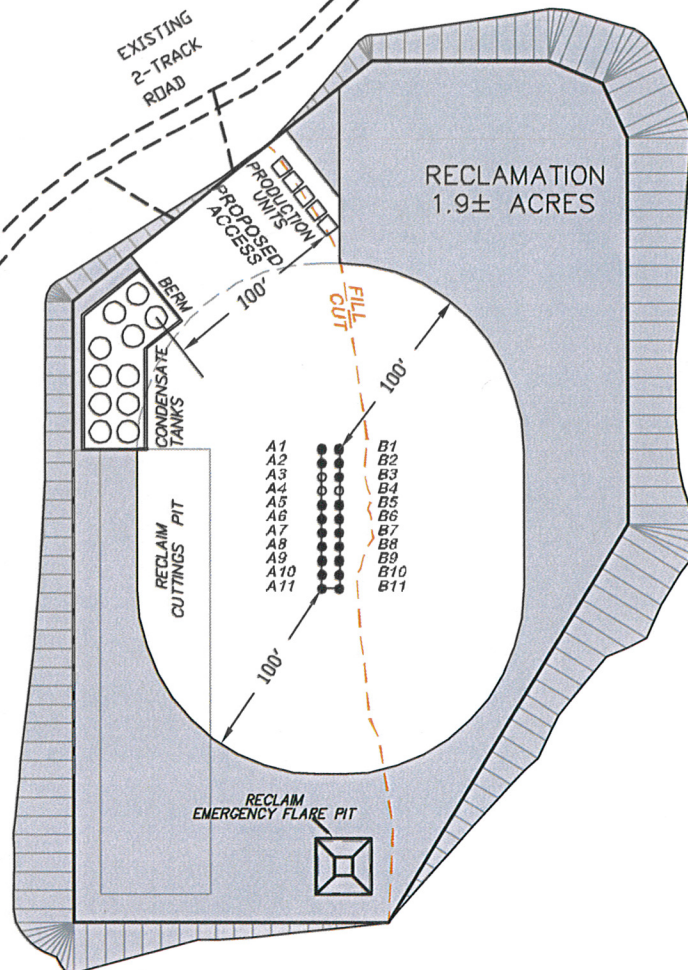
NOBLE ENERGY, INC.
RULISON FEDERAL 20-11D, 20-21D, 20-32A,
20-33B, 20-32C, & 20-32D; LONG 20-12A,
20-12B, 20-12C, 20-12D, 20-13A, 20-22A, 20-22B,
20-22C, 20-22D, 20-23A, 20-23B, 20-23C, 20-23D

UNGRADED ELEVATION: 7908.2'
 FINISHED ELEVATION: 7906.0'





UNGRADED ELEVATION: 7908.2'
FINISHED ELEVATION: 7906.0'
ESTIMATED DISTURBANCE
AREA = 3.4 ACRES +/-



**BEFORE DIGGING
CALL FOR
UTILITY LINE LOCATION**

NOTE: THE EARTH QUANTITIES ON
THIS DRAWING ARE ESTIMATED
AND THE USE OF IS AT THE
RESPONSIBILITY OF THE USER.

20F PAD			
SLOT	WELL NAME	SLOT	WELL NAME
A1	LONG 20-12D	B1	LONG 20-12C
A2	LONG 20-13A	B2	LONG 20-12B
A3	OPEN	B3	LONG 20-12A
A4	OPEN	B4	OPEN
A5	LONG 20-23D	B5	RULISON FED. 20-11D
A6	LONG 20-23C	B6	RULISON FED. 20-21D
A7	LONG 20-23B	B7	LONG 20-22A
A8	LONG 20-23A	B8	LONG 20-22B
A9	LONG 20-22D	B9	RULISON FED. 20-32A
A10	RULISON FED. 20-32D	B10	RULISON FED. 20-32B
A11	RULISON FED. 20-32C	B11	LONG 20-22C

100 0 100
SCALE FEET



(307) 362-5028

1414 ELK ST., ROCK SPRINGS, WY 82901

DRAWN: 9/25/08 - RAB

SCALE: 1" = 100'

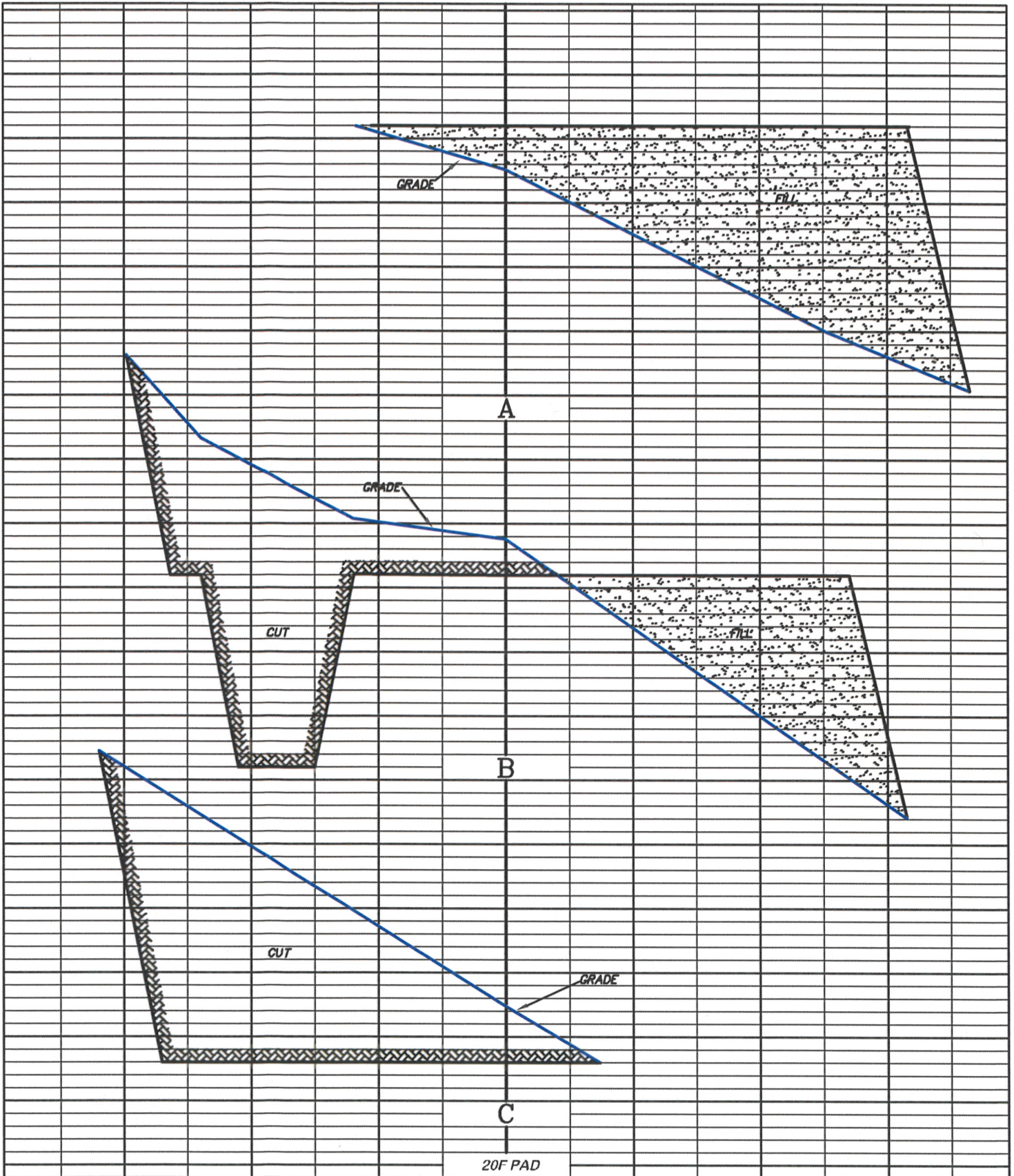
REVISED: n/a

DRG JOB No. 15455

EXHIBIT 2C

NOBLE ENERGY, INC. - RECLAMTION PLAN:
RULISON FEDERAL 20-11D, 20-21D, 20-32A,
20-33B, 20-32C, & 20-32D; LONG 20-12A,
20-12B, 20-12C, 20-12D, 20-13A, 20-22A, 20-22B,
20-22C, 20-22D, 20-23A, 20-23B, 20-23C, 20-23D

UNGRADED ELEVATION: 7908.2'
FINISHED ELEVATION: 7906.0'



RIFFIN & ASSOCIATES, INC.
1414 ELK ST., ROCK SPRINGS, WY 82901

(307) 362-5028

DRAWN: 9/25/08 - RAB

HORZ. 1" = 50' VERT. 1" = 10'

REVISED: n/a

DRG JOB No. 15455

EXHIBIT 3

NOBLE ENERGY, INC.

RULISON FEDERAL 20-11D, 20-21D, 20-32A, 20-33B, 20-32C, &
20-32D; LONG 20-12A, 20-12B, 20-12C, 20-12D, 20-13A, 20-22A,
20-22B, 20-22C, 20-22D, 20-23A, 20-23B, 20-23C, 20-23D

UNGRADED ELEVATION: 7908.2'
FINISHED ELEVATION: 7906.0'