

Steil Surveying Services, LLC

1102 West 19th Street P.O. BOX 2073

Cheyenne, Wyoming 82009

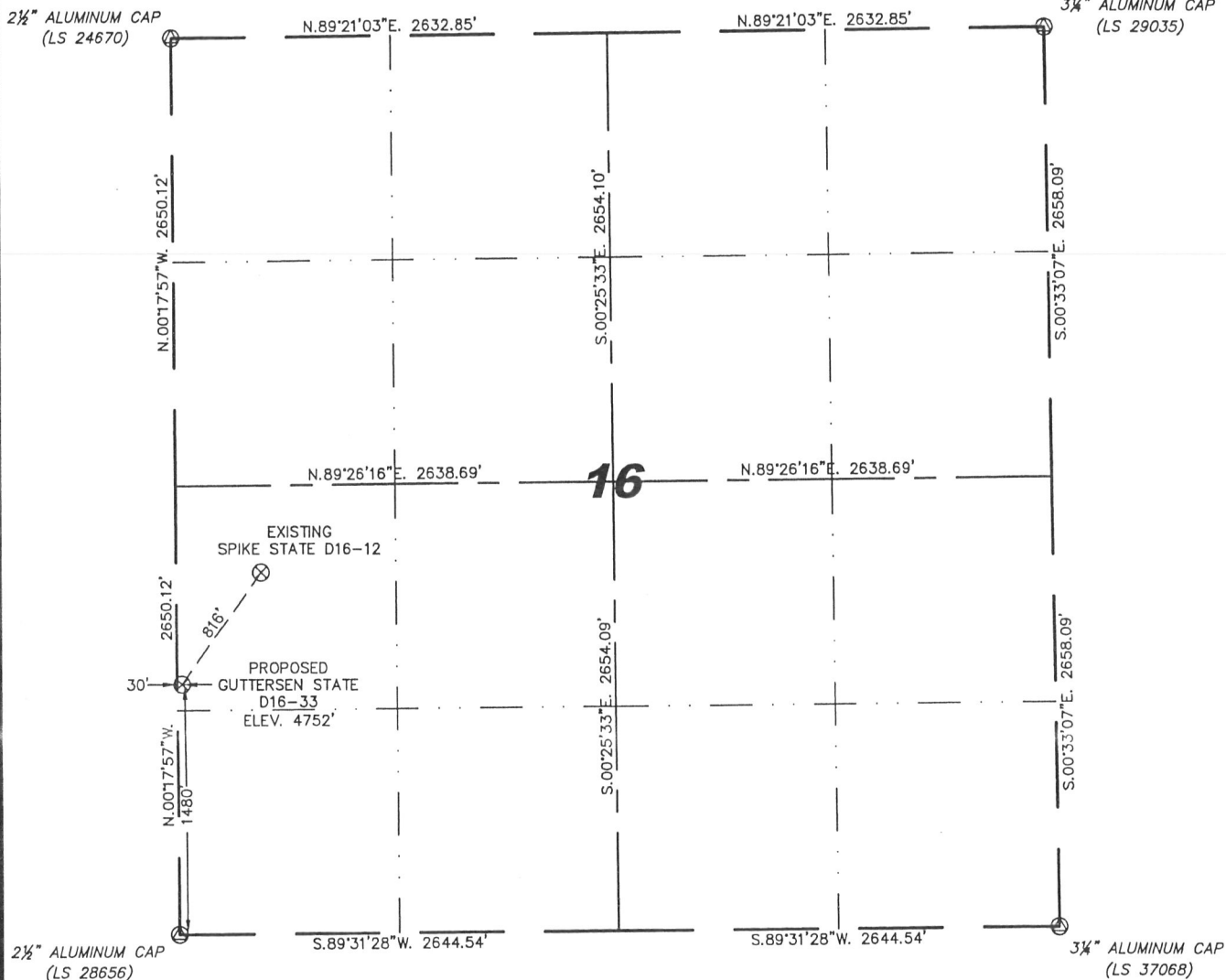
# WELL LOCATION CERTIFICATE

THIS MAP DOES NOT REPRESENT A BOUNDARY SURVEY

SECTION 16  
TOWNSHIP 3 NORTH  
RANGE 64 WEST

2 1/2" ALUMINUM CAP  
(LS 24670)

3 1/4" ALUMINUM CAP  
(LS 29035)



0 1000

Scale: 1" = 1000'

IN ACCORDANCE WITH A REQUEST FROM ERIK VAN DECAR - NOBLE ENERGY INC, STEIL SURVEYING SERVICES, LLC HAS DETERMINED THE LOCATION OF THE GUTTERSEN STATE D16-33 WELL TO BE 1480' FSL, 30' FWL, AS MEASURED AT NINETY (90) DEGREES FROM THE SECTION LINES, SECTION 16, TOWNSHIP 3 NORTH, RANGE 64 WEST, 6TH PRINCIPLE MERIDIAN, WELD COUNTY, COLORADO.

I HEREBY CERTIFY THAT THIS WELL LOCATION CERTIFICATE WAS PREPARED BY ME, OR UNDER MY DIRECT SUPERVISION, THAT THE FIELD WORK WAS COMPLETED ON 04/29/2009, FOR AND ON BEHALF OF NOBLE ENERGY INC, THAT IT IS NOT A LAND SURVEY PLAT OR AN IMPROVEMENT SURVEY PLAT, AND THAT IT IS NOT TO BE RELIED UPON FOR ESTABLISHMENT OF FENCE, BUILDING, OR OTHER FUTURE IMPROVEMENT LINES.

## NOTES:

- 1) BASIS OF BEARINGS FOR THIS MAP ARE BASED UPON GPS OBSERVATIONS MADE ON 04/29/2009 BETWEEN MONUMENTS LOCATED AT THE SOUTHEAST SECTION CORNER AND THE NORTHEAST SECTION CORNER OF SAID SECTION AND WITH ALL BEARINGS SHOWN HEREON RELATIVE THERETO.
- 2) ELEVATIONS ARE BASED UPON NGS OPUS SOLUTION NAVD 88 DATUM.
- 3) THE NEAREST EXISTING WELL IS: SPIKE STATE D16-12, 816' NORTHEAST.
- 4) SEE VISIBLE IMPROVEMENTS EXHIBIT FOR ALL IMPROVEMENTS WITHIN 400'.
- 5) THE LOCATION FALLS IN PASTURE LAND.

LATITUDE & LONGITUDE (NAD 83 SURFACE HOLE):

LATITUDE: N 40.22219°  
LONGITUDE: W 104.56552°  
PDOP: 2.4

QUARTER-QUARTER: NW/4SW/4

NEAREST PROPERTY LINE: 30' TO THE WEST

## LEGEND

- ⊙ FOUND SURVEY MONUMENT PER  
MONUMENT RECORD - EXCEPTIONS NOTED.
- (C) CALCULATED DIMENSION

NOTICE: According to Colorado law you MUST commence any legal action based upon any defect in this W.L.C. within three years after you first discover such defect. In no event may any action based upon any defect in this W.L.C. be commenced more than ten years from this sold date of the certification shown hereon.

David C. Holmes  
Professional Land Surveyor Registration No. 32828  
State of Colorado

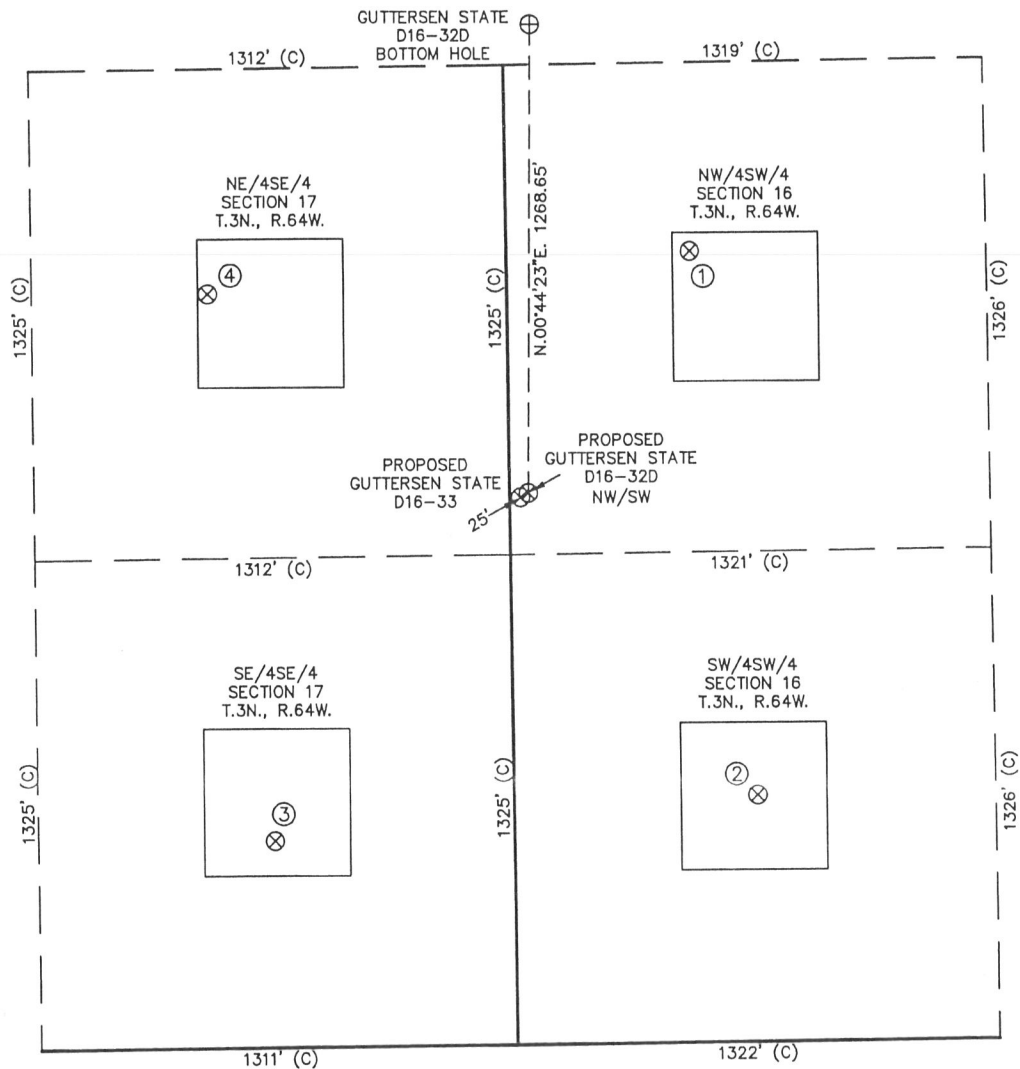
JOB #: 09086

Completed 05/04/2009



# SITE SKETCH - GUTTERSEN STATE D16-33

SECTION 16  
TOWNSHIP 3 NORTH  
RANGE 64 WEST



①	②	③	④
SPIKE STATE D16-12 NW/SW SEC. 16 2140' FSL 509' FWL EL 4768' N 40.22400 W 104.56379 PDOP 2.0	DIGGIN STATE D16-13J SW/SW SEC. 16 665' FSL 672' FWL EL 4763' N 40.21996 W 104.56324 PDOP 2.1	HSR-MIKE GUTTERSEN 16-17X SE/SE SEC. 17 562' FSL 662' FEL EL 4755' N 40.21967 W 104.56802 PDOP 2.1	HSR-WEEKS 9-17 NE/SE SEC. 17 2046' FSL 829' FEL EL 4749' N 40.22374 W 104.56859 PDOP 2.4

## NOTES:

- THIS SKETCH DOES NOT REPRESENT A BOUNDARY SURVEY.
- THE DATUM FOR THE LATITUDES AND LONGITUDES ON THIS SKETCH IS NAD83.

