

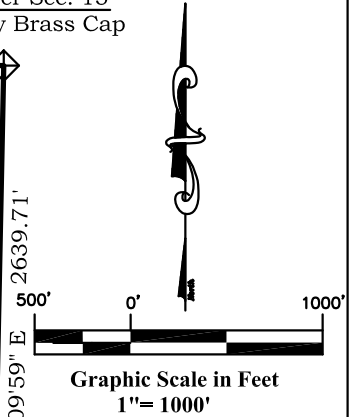
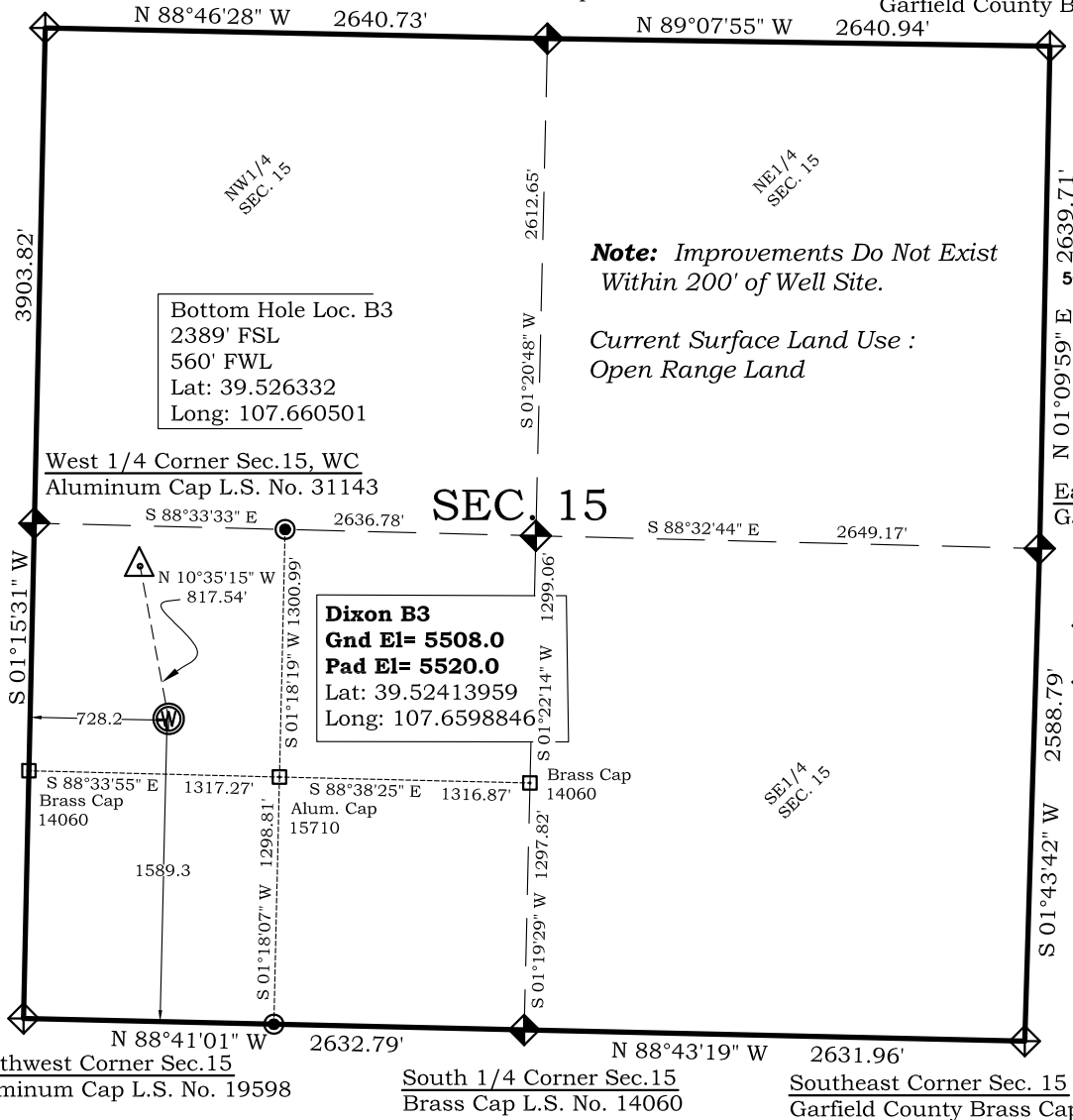
Well Location Plat

Dixon Well B3

Northwest Corner Sec.15
Stone Monument 17' WC

North 1/4 Corner Sec.15
Aluminum Cap L.S. No. 24303

Northeast Corner Sec. 15
Garfield County Brass Cap



Legend

- ◆ - Field Surveyed Section Corner
- ◆ - Field Surveyed Quarter Corner
- - Calculated Section Corner Location
- - Field Surveyed 1/6 Corner

DIXON B PAD

WELL B3

1589' FSL

728' FWL

WGS 84

LATITUDE

39.52413959

LONGITUDE

107.6598846

UTM 13 NORTH

NAD 1983

NORTHING

14364545.6

EASTING

890316.8

Prepared For Antero Resources

Proposed Dixon B3 Well Situate in The NW 1/4 SW 1/4 Section

15, Township 6 South, Range 92 West of the 6 th. Principal

Meridian, County of Garfield, State of Colorado

SURVEYOR'S CERTIFICATE

I, SCOTT E. AIBNER, A REGISTERED LAND SURVEYOR, LICENSED UNDER THE LAWS OF THE STATE OF COLORADO DO HEREBY CERTIFY THAT THE SURVEY SHOWN HEREON WAS PREPARED BY RIVER VALLEY SURVEY, INC., FOR ANTERO RESOURCES, BY ME OR UNDER MY DIRECT SUPERVISION AND THAT THIS PLAT IS A TRUE REPRESENTATION THEREOF.

BY:

SCOTT E. AIBNER, COLORADO REG. NO. 31143

Notes:

- 1.) LATITUDE AND LONGITUDE COORDINATES ARE DIFFERENTIALLY CORRECTED AND BASED ON PUBLISHED NGS CONTROL STATION "WDP-5".
- SYSTEM: UTM ZONE: 13 NORTH DATUM: NAD 1983 (CONUS)
- 2.) ELEVATIONS ARE BASED ON NAVD OF 1929.
- 3.) ALL BOTTOM AND TOP HOLE LOCATIONS ARE MEASURED 90 DEGREES FROM SECTION LINE.
- 4.) USGS QUADRANGLE MAP "SILT CO".
- 5.) CURRENT SURFACE LAND USE: OPEN RANGELAND
- 6.) PDOP AT THE TIME OF LOCATION OF SURFACE WELL = 1.4
- 7.) BOTTOM HOLE DISTANCE TO NEAREST LEASE LINE IS 212.2'



River Valley Survey, Inc.
110 East 3rd. Street, Suite 207
Rifle, Colorado 81650
Ph: 970-379-7846

Project: Dixon B Pad

Proj. No. 06001-07

Field Date: 11-15-06

Scale: 1"= 1000'

Date: 09-30-09

Sheet: 1 of 8

Well Location Plat
Prepared For Antero Resources

Situate In:
NW 1/4 SW 1/4 Section 15, T6S., R. 92
W. of the 6th P.M., Garfield County,
Colorado

