

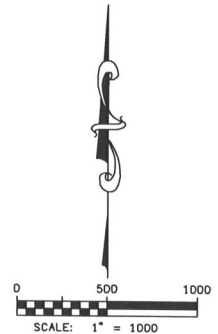
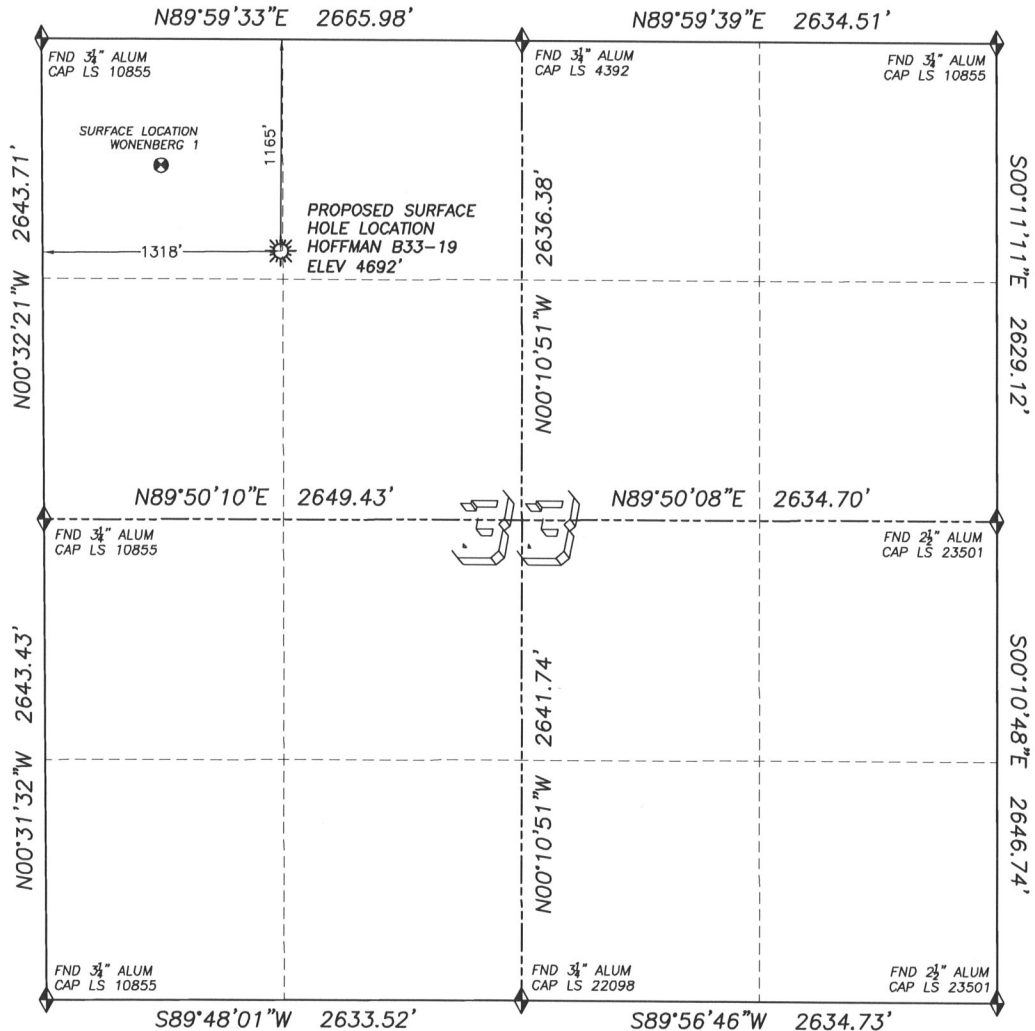
DALEY LAND SURVEYING, INC.

PARKER, CO. 80134

303 953 9841

WELL LOCATION CERTIFICATE HOFFMAN B33-19

SECTION 33, TOWNSHIP 5 NORTH, RANGE 64 WEST OF THE 6TH PRINCIPLE MERIDIAN



LEGEND

- ◆ FOUND MONUMENT AS DESCRIBED
- ☀ PROPOSED WELL
- EXISTING WELL
- BOTTOM HOLE
- ⊕ ABANDONED WELL

NAD 83 LATITUDE AND LONGITUDE

HOFFMAN B33-19 SURFACE HOLE:

LATITUDE: N40.35983°
LONGITUDE: W104.55943°
ELEVATION: 4692'
PDOP 1.2
1165' FNL, 1318' FWL

NEAREST EXISTING WELL:

WONENBERG 1 SURFACE HOLE
LATITUDE: N40.36112°
LONGITUDE: W104.56182°
ELEVATION: 4700'
814' NORTHWEST

QUARTER/QUARTER: NW4 NW4

NEAREST APPARENT PROPERTY LINE:
155± SOUTH

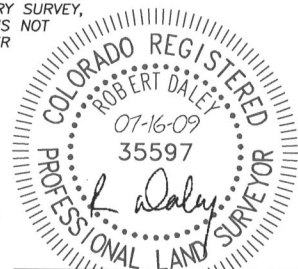
IN ACCORDANCE WITH A REQUEST FROM MATT CAMPBELL OF NOBLE ENERGY INC., DALEY LAND SURVEYING, INC. HAS DETERMINED THE SURFACE LOCATION OF THE HOFFMAN B33-19 WELL TO BE 1165' FNL, 1318' FWL, AS MEASURED AT NINETY (90) DEGREES FROM THE SECTION LINES OF SECTION 33, TOWNSHIP 5 NORTH, RANGE 64 WEST OF THE 6TH PRINCIPLE MERIDIAN, WELD COUNTY COLORADO.

I HEREBY CERTIFY THAT THIS WELL LOCATION CERTIFICATE WAS PREPARED BY ME OR UNDER MY DIRECT SUPERVISION, THAT THE WORK WAS COMPLETED ON 07/14/2009 FOR AND ON BEHALF OF NOBLE ENERGY, INC., AND THAT THIS MAP DOES NOT REPRESENT A BOUNDARY SURVEY, IT IS NOT A LAND SURVEY PLAT OR AN IMPROVEMENT SURVEY PLAT AND IT IS NOT TO BE RELIED UPON FOR THE ESTABLISHMENT OF FENCE, BUILDING OR OTHER FUTURE IMPROVEMENT LINES.

NOTES:

- 1) BASIS OF BEARINGS FOR THIS MAP ARE ASSUMED AND BASED UPON GPS OBSERVATIONS MADE BETWEEN MONUMENTS LOCATED AT THE NORTHWEST AND NORTH QUARTER CORNER OF SECTION 33, T.5N, R.64W., AND ALL BEARINGS SHOWN HEREON ARE RELATIVE THERETO.
- 2) HORIZONTAL DATUM IS NAD83.
- 3) VERTICAL DATUM IS NAVD88. ELEVATIONS ARE DERIVED FROM GPS-RTK OBSERVATIONS PROCESSED THROUGH OPUS, UTILIZING THE GEIOD03 MODEL.
- 4) SEE VISIBLE IMPROVEMENTS EXHIBIT FOR VISIBLE IMPROVEMENTS WITHIN 400' OF PROPOSED SURFACE HOLE LOCATION.
- 5) SURFACE USE: IRRIGATED CROPLAND

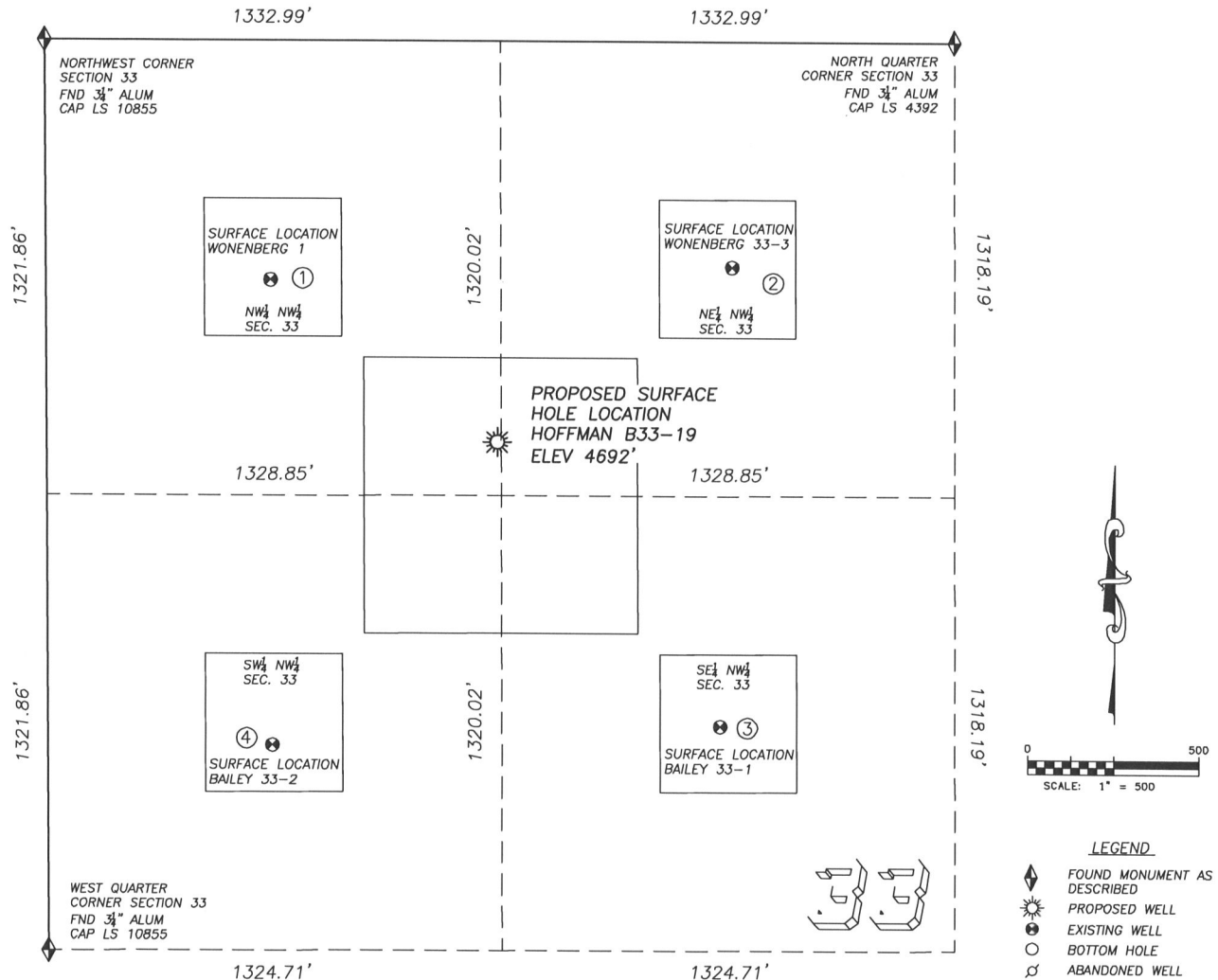
NOTICE: According to Colorado law you MUST commence any legal action based upon any defect in this W.L.C. within three years after you first discover such defect. In no event may any action based upon any such defect in this W.L.C. be commenced more than ten years from the date of the certification shown hereon.



FOR AND ON BEHALF OF
DALEY LAND SURVEYING INC.,
Robert Daley, PLS 35597

SITE SKETCH HOFFMAN B33-19

SECTION 33, TOWNSHIP 5 NORTH, RANGE 64 WEST OF THE 6TH PRINCIPLE MERIDIAN



①

WONENBERG 1
NW/NW SEC. 33
696' FNL, 658' FWL
814' NW OF PROPOSED
SURFACE HOLE LOCATION
LAT. N40.36112"
LONG. W104.56182"
EL: 4700'
PDOP 2.1

②

WONENBERG 33-3
NE/NW SEC. 33
656' FNL, 2010' FWL
856' NE OF PROPOSED
SURFACE HOLE LOCATION
LAT. N40.36123"
LONG. W104.55697"
EL: 4664'
PDOP 2.3

③

BAILEY 33-1
SE/NW SEC. 33
1988' FNL, 1966' FWL
1050' SE OF PROPOSED
SURFACE HOLE LOCATION
LAT. N40.35757"
LONG. W104.55708"
EL: 4687'
PDOP 2.6

④

BAILEY 33-2
SW/NW SEC. 33
2046' FNL, 657' FWL
1095' SW OF PROPOSED
SURFACE HOLE LOCATION
LAT. N40.35741"
LONG. W104.56177"
EL: 4711'
PDOP 1.8

NOTES:

- THIS DOES NOT REPRESENT A BOUNDARY SURVEY
- THE LATITUDES AND LONGITUDES SHOWN ARE REFERENCED TO NAD83
- DATUM FOR ELEVATION IS NAVD88. ELEVATIONS ARE DERIVED FROM GPS-RTK OBSERVATIONS PROCESSED THROUGH OPUS, UTILIZING THE GEOID03 MODEL.