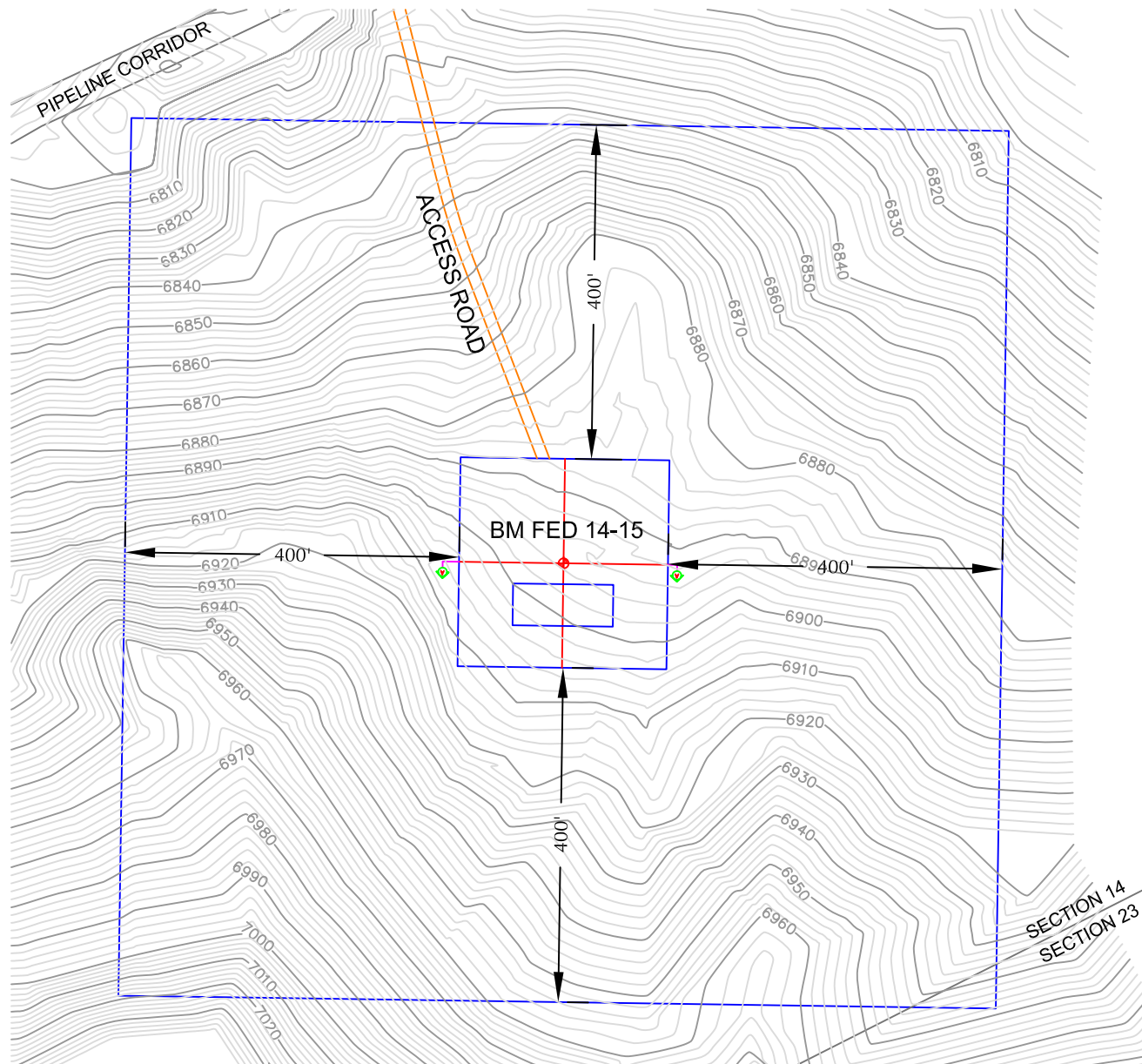


# Scaled Location Drawing - No Visible Improvements Within 400 Feet



NEW FRONTIER ENERGY, INC.

BATTLE MOUNTAIN FED 14-15  
TOPOGRAPHY WITHIN 400' OF LAYOUT  
662' FSL, 2017' FEL  
SW $\frac{1}{4}$ SE $\frac{1}{4}$ , SEC 14, T.12N., R.89W., 6th PM  
MOFFAT COUNTY, COLORADO

CHOICE ENGINEERING SERVICES

404 "N" Street - Suite 201 | Rock Springs, WY 82901  
Phone 307-362-6065 | Fax 307-362-6064

Scale: 1"=200'	Date: 10/09/09	SHEET NO:
REVISED:	BY DATE	1



0 100 200

SCALE: 1" = 200'  
2' CONTOUR INTERVAL

**NFE**INC.