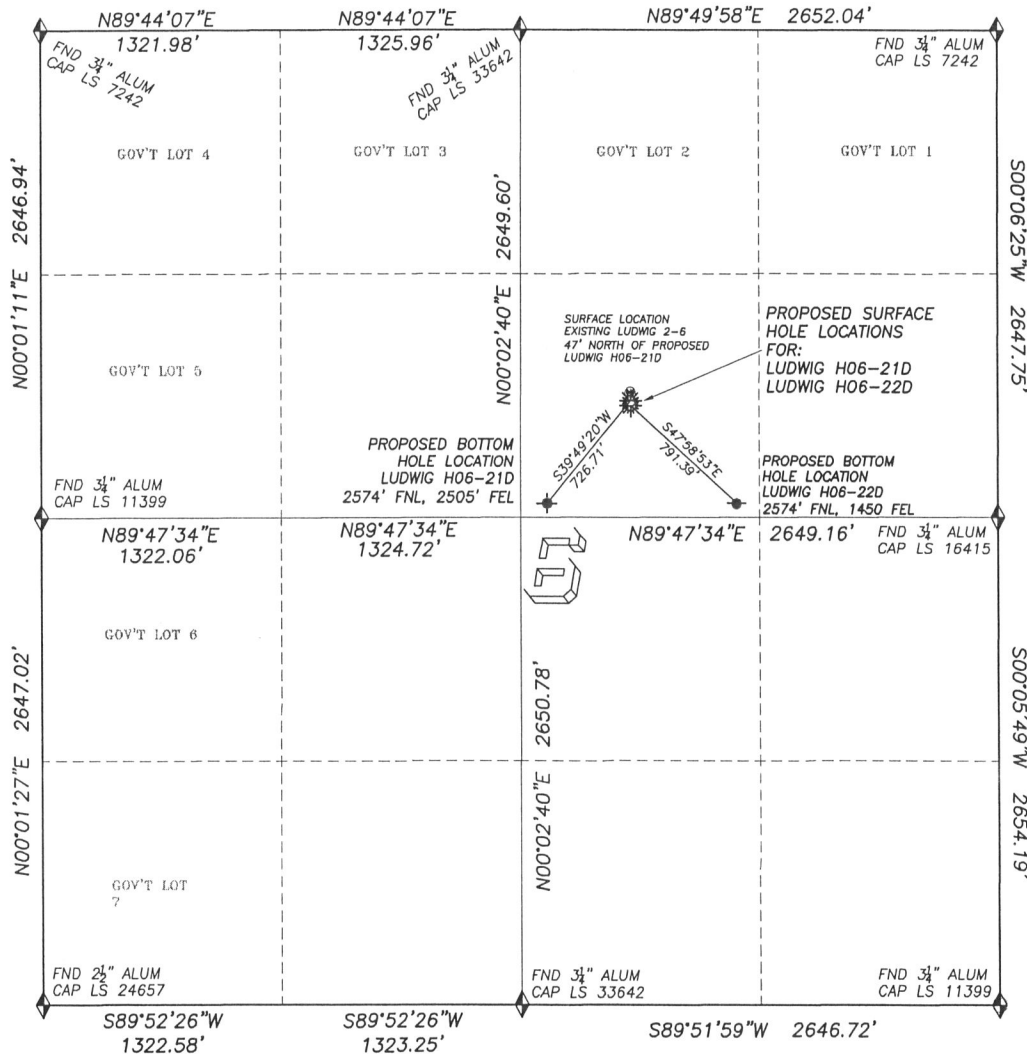


# MULTI WELL PLAN

DALEY LAND SURVEYING, INC. 10727 FLAGLER DR. PARKER, CO. 80134

## DIRECTIONAL LAYOUT LUDWIG H06-21D & LUDWIG H06-22D

SECTION 6, TOWNSHIP 3 NORTH, RANGE 65 WEST OF THE 6TH PRINCIPLE MERIDIAN



- LEGEND**
- FOUND MONUMENT AS DESCRIBED
  - PROPOSED WELL
  - EXISTING WELL
  - BOTTOM HOLE
  - ABANDONED WELL

### NAD 83 LATITUDE AND LONGITUDE

#### LUDWIG H06-21D SURFACE HOLE:

LATITUDE: N40.25614°  
LONGITUDE: W104.70399°  
ELEVATION: 4968'  
PDOP: 1.7  
2018' FNL, 2041' FEL

#### BOTTOM HOLE:

LATITUDE: N40.25461°  
LONGITUDE: W104.70566°  
2574' FNL, 2505' FEL

#### NEAREST EXISTING WELL:

LUDWIG 2-6 SURFACE HOLE  
LATITUDE: N40.25627°  
LONGITUDE: W104.70400°  
ELEVATION: 4969'  
47' NORTH

### NAD 83 LATITUDE AND LONGITUDE

#### LUDWIG H06-22D SURFACE HOLE:

LATITUDE: N40.25608°  
LONGITUDE: W104.70399°  
ELEVATION: 4969'  
PDOP: 1.7  
2042' FNL, 2039' FEL

#### BOTTOM HOLE:

LATITUDE: N40.25462°  
LONGITUDE: W104.70188°  
2574' FNL, 1450' FEL

#### NEAREST EXISTING WELL:

LUDWIG 2-6 SURFACE HOLE  
LATITUDE: N40.25627°  
LONGITUDE: W104.70400°  
ELEVATION: 4969'  
72' NORTH