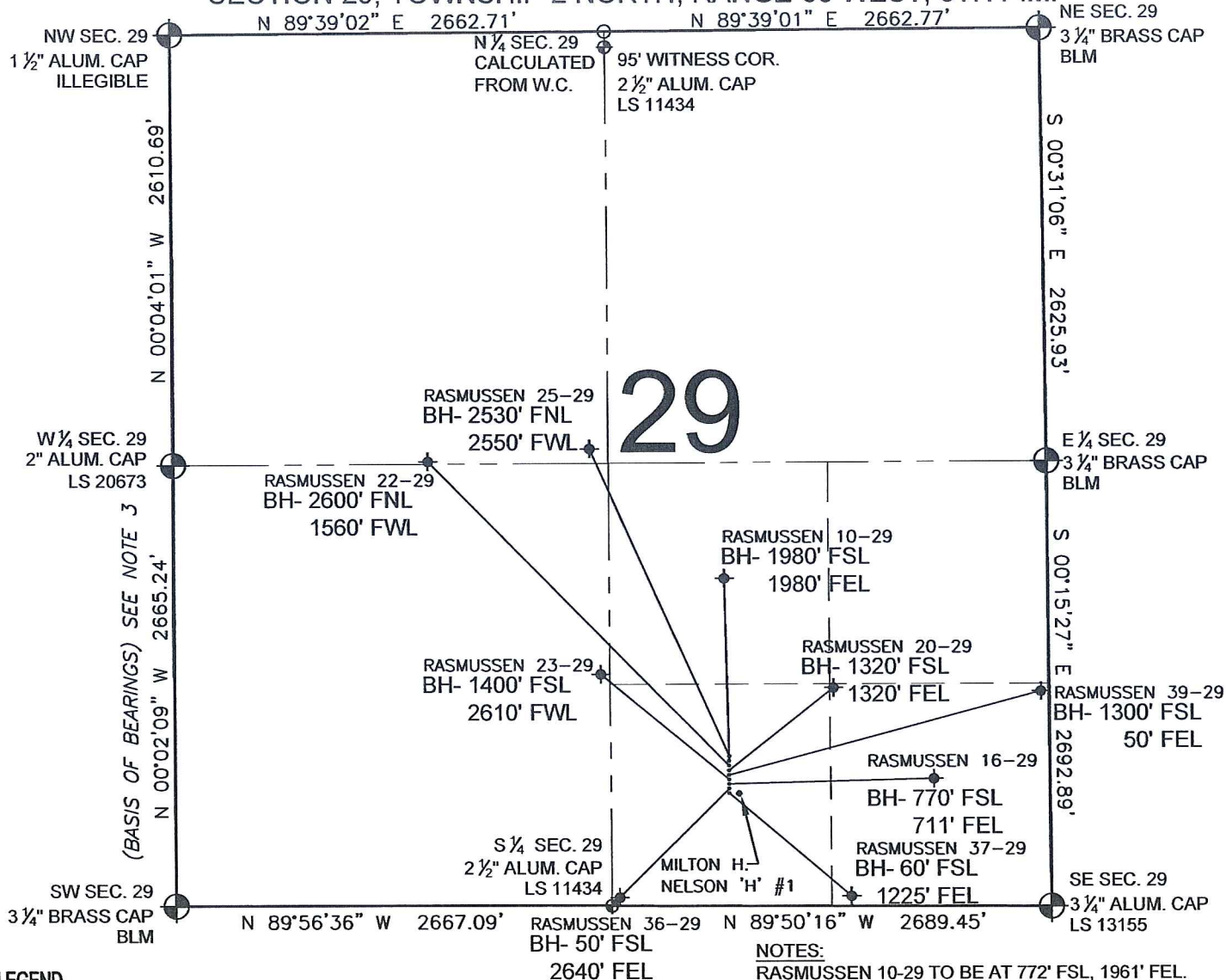


PAD DRAWING - RASMUSSEN 9 PAD

SECTION 29, TOWNSHIP 2 NORTH, RANGE 68 WEST, 6TH P.M.



LEGEND

- ⊕ = EXISTING MONUMENT
- ⊙ = PROPOSED WELL
- ⬮ = BOTTOM HOLE
- ⬮ = EXISTING WELL
- BH= BOTTOM HOLE

NOTES:

- THIS SURVEY WAS DONE BY GPS METHODS AND CONFORMS TO THE MINIMUM STANDARDS SET BY THE C.O.G.C.C., RULE NO. 215
- ELEVATIONS SHOWN AT THE WELL HEAD, AS WELL AS HORIZONTAL CONTROL, ARE BASED ON GPS-RTK VALUES DERIVED FROM DOING 2-HOUR STATIC GPS SESSIONS AND REDUCTIONS USING O.P.U.S. SOLUTIONS.
VERTICAL = NAVD88; HORIZONTAL = NAD83/92
- THE BEARINGS SHOWN HEREON ARE BASED ON GPS OBSERVATIONS BETWEEN THE MONUMENTS SHOWN HEREON AS FOUND ON THE FIELD DATE BELOW.
- DISTANCES SHOWN ARE AT GROUND LEVEL, AS MEASURED IN THE FIELD, WITH TIES TO WELLS MEASURED AT A PERPENDICULAR TO SECTION LINES.

NOTES:

- RASMUSSEN 10-29 TO BE AT 772' FSL, 1961' FEL. BOTTOM HOLE AT 1980' FSL & 1980' FEL.
- RASMUSSEN 25-29 TO BE AT 787' FSL, 1961' FEL. BOTTOM HOLE AT 2530' FNL & 2550' FWL.
- RASMUSSEN 22-29 TO BE AT 757' FSL, 1962' FEL. BOTTOM HOLE AT 2600' FNL & 1560' FWL.
- RASMUSSEN 20-29 TO BE AT 742' FSL, 1962' FEL. BOTTOM HOLE AT 1320' FSL & 1320' FEL.
- RASMUSSEN 39-29 TO BE AT 727' FSL, 1962' FEL. BOTTOM HOLE AT 1300' FSL & 50' FEL.
- RASMUSSEN 16-29 TO BE AT 697' FSL, 1963' FEL. BOTTOM HOLE AT 770' FSL & 711' FEL.
- RASMUSSEN 23-29 TO BE AT 712' FSL, 1962' FEL. BOTTOM HOLE AT 1400' FSL & 2610' FWL.
- RASMUSSEN 36-29 TO BE AT 682' FSL, 1963' FEL. BOTTOM HOLE AT 50' FSL & 2640' FEL.
- RASMUSSEN 37-29 TO BE AT 667' FSL, 1963' FEL. BOTTOM HOLE AT 60' FSL & 1225' FEL.
- MILTON H. NELSON 'H' #1 IS 664' FSL, 1916' FEL.

0 500 1000

SCALE: 1"=1000'

REVISIONS

INITIAL	DATE

PREPARED BY:

PFS

Petroleum Field Services, LLC
1801 W. 13th Ave.
Denver, CO 80204



KERR-MCGEE OIL & GAS ONSHORE LP

FIELD DATE:

08-20-09

DRAWING DATE:

08-24-09

BY:

SMF

PAD NAME:

RASMUSSEN 9 PAD

SURFACE LOCATION:

WELD COUNTY, COLORADO
SW 1/4 SE 1/4, SEC. 29, T2N, R68W