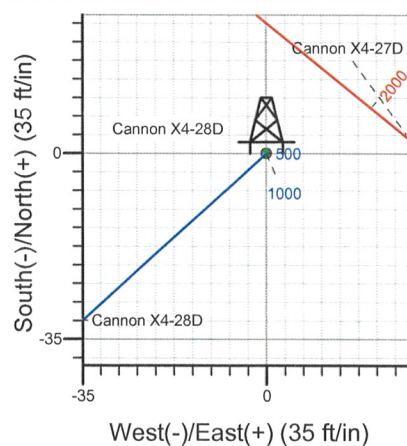
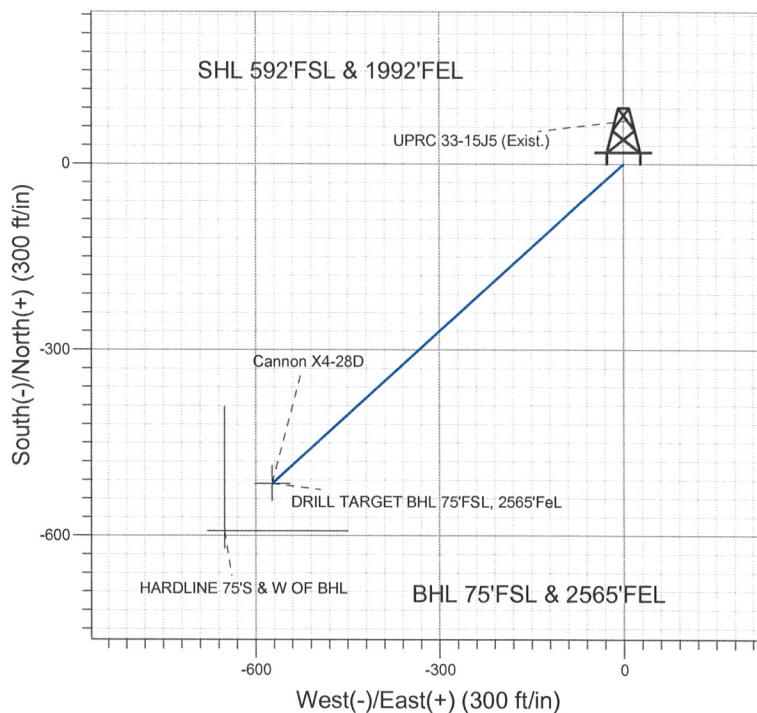
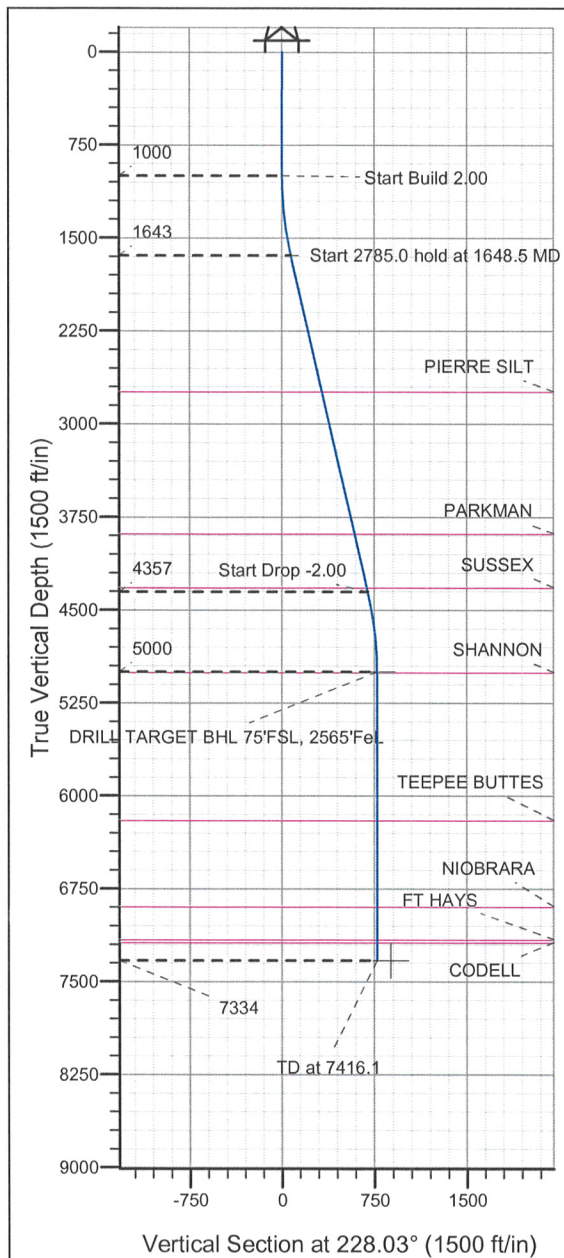


Well Name: Cannon X4-28D
 Surface Location: Cannon X4-27D Pad Sec.33-T3N-R65W
 North American Datum 1983 , US State Plane 1983 , Colorado Northern Zone
 Ground Elevation: 4844.0
 +N/-S +E/-W Northing Easting Latitude Longitude Slot
 0.0 0.0 1308156.86 3232965.27 40° 10' 34.608 N 104° 39' 58.572 W
 Original Well Elev WELL @ 4856.0ft (Original Well Elev)

NOBLE ENERGY INC WELD COUNTY CO



Cannon X4-28D
 Noble Cannon X4-28D Plan #7 (10-7-09)
 13:48, October 07 2009



Azimuths to True North
 Magnetic North: 9.00°
 Magnetic Field
 Strength: 53233.2snT
 Dip Angle: 66.96°
 Date: 8/25/2009
 Model: IGRF200510

WELLBORE TARGET DETAILS (LAT/LONG)

Name	TVD	+N/-S	+E/-W	Latitude	Longitude	Shape
DRILL TARGET BHL 75°FSL, 2565°FEL	5000.0	-515.8	-573.4	40° 10' 29.510 N	104° 40' 5.959 W	Point
HARDLINE 75°S & W OF BHL	7334.0	-592.4	-650.4	40° 10' 28.754 N	104° 40' 6.951 W	Polygon

SECTION DETAILS

Sec	MD	Inc	Azi	TVD	+N/-S	+E/-W	DLeg	TFace	VSec	Target
1	0.0	0.00	0.00	0.0	0.0	0.0	0.00	0.00	0.0	
2	1000.0	0.00	0.00	1000.0	0.0	0.0	0.00	0.00	0.0	
3	1648.5	12.97	228.03	1643.0	-48.9	-54.3	2.00	228.03	73.1	
4	4433.6	12.97	228.03	4357.0	-466.9	-519.1	0.00	0.00	698.2	
5	5082.1	0.00	0.00	5000.0	-515.8	-573.4	2.00	180.00	771.3	DRILL TARGET BHL 75°FSL, 2565°FEL
6	7416.1	0.00	0.00	7334.0	-515.8	-573.4	0.00	0.00	771.3	