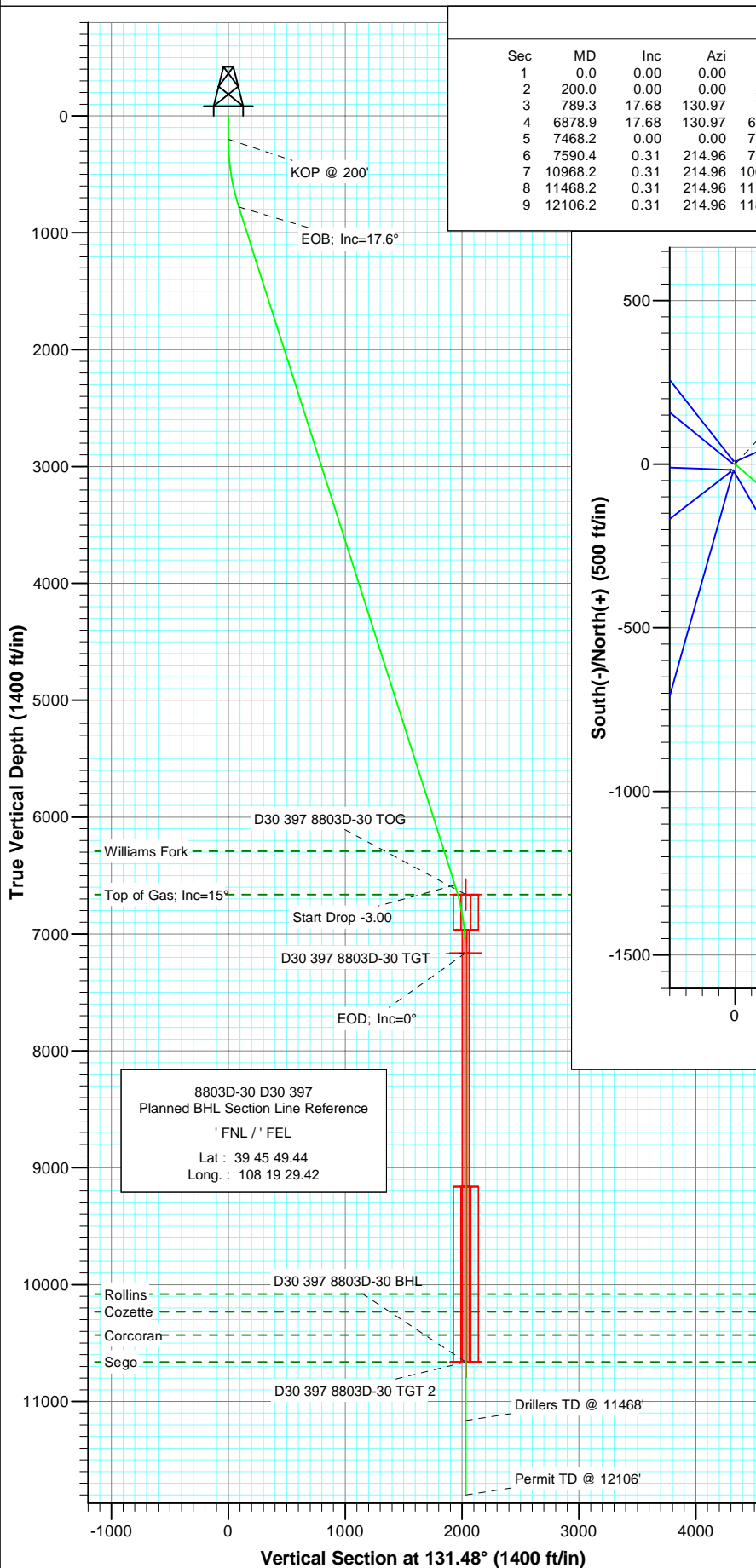
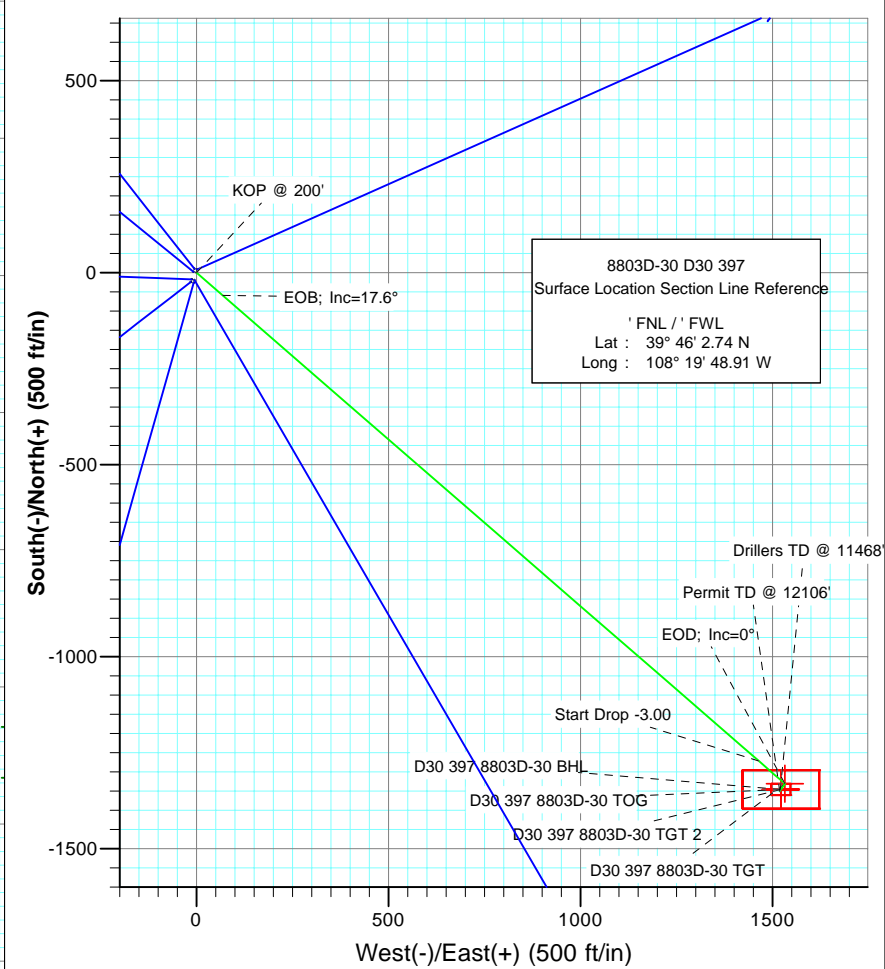




Project: Eureka Unit
Site: Sec 19-T3S-R97W
Well: 8803D-30 D30 397
Wellbore: DD
Plan: Plan #1



SECTION DETAILS											
Sec	MD	Inc	Azi	TVD	+N/-S	+E/-W	DLeg	TFace	VSec	Target	
1	0.0	0.00	0.00	0.0	0.0	0.0	0.00	0.00	0.0		
2	200.0	0.00	0.00	200.0	0.0	0.0	0.00	0.00	0.0		
3	789.3	17.68	130.97	780.0	-59.1	68.1	3.00	130.97	90.2		
4	6878.9	17.68	130.97	6582.0	-1271.6	1464.4	0.00	0.00	1939.3		
5	7468.2	0.00	0.00	7162.0	-1330.7	1532.5	3.00	180.00	2029.5	D30 397 8803D-30 TGT	
6	7590.4	0.31	214.96	7284.2	-1331.0	1532.3	0.25	214.96	2029.6		
7	10968.2	0.31	214.96	10662.0	-1345.7	1522.0	0.00	0.00	2031.6	D30 397 8803D-30 BHL	
8	11468.2	0.31	214.96	11162.0	-1347.9	1520.5	0.00	0.00	2031.9		
9	12106.2	0.31	214.96	11800.0	-1350.7	1518.5	0.00	0.00	2032.3		



FORMATION TOP DETAILS		
TVDPath	MDPath	Formation
6292.0	6574.5	Williams Fork
6662.0	6962.3	Top of Gas; Inc=15°
10082.0	10388.2	Rollins
10232.0	10538.2	Cozette
10432.0	10738.2	Corcoran
10662.0	10968.2	Sego

Azimuths to True North
Magnetic North: 10.82°

Magnetic Field
Strength: 52659.4nT
Dip Angle: 65.97°
Date: 2/25/2009
Model: IGRF200510

DESIGN DETAILS: Plan #1				
Job# 95xxx; LR				
KB 8803D-30 D30 @ 7362.0ft (Original Well Elev)				
Target	Azimuth	Origin Type	N/S	E/W From TVD
D30 397 8803D-30 BHL	131.48	Slot	0.0	0.0 0.0

Cathedral Energy Services

Planning Report

Database:	EDM 2003.21 US Multi Users DB	Local Co-ordinate Reference:	Well 8803D-30 D30 397
Company:	EnCana Oil & Gas (USA) Inc	TVD Reference:	KB 8803D-30 D30 @ 7362.0ft (Original Well Elev)
Project:	Eureka Unit	MD Reference:	KB 8803D-30 D30 @ 7362.0ft (Original Well Elev)
Site:	Sec 19-T3S-R97W	North Reference:	True
Well:	8803D-30 D30 397	Survey Calculation Method:	Minimum Curvature
Wellbore:	DD		
Design:	Plan #1		

Project	Eureka Unit		
Map System:	US State Plane 1983	System Datum:	Mean Sea Level
Geo Datum:	North American Datum 1983		
Map Zone:	Colorado Central Zone		

Site	Sec 19-T3S-R97W			
Site Position:		Northing:	1,716,819.85 ft	Latitude: 39° 46' 2.82 N
From:	Lat/Long	Easting:	2,204,516.45 ft	Longitude: 108° 19' 48.89 W
Position Uncertainty:	0.0 ft	Slot Radius:	in	Grid Convergence: -1.79 °

Well	8803D-30 D30 397			
Well Position	+N/-S	0.0 ft	Northing:	1,716,811.80 ft
	+E/-W	0.0 ft	Easting:	2,204,514.64 ft
Position Uncertainty		0.0 ft	Wellhead Elevation:	ft
			Ground Level:	7,340.0 ft

Wellbore	DD				
Magnetics	Model Name	Sample Date	Declination (°)	Dip Angle (°)	Field Strength (nT)
	IGRF200510	2/25/2009	10.82	65.97	52,659

Design	Plan #1			
Audit Notes:				
Version:	Phase:	PLAN	Tie On Depth:	0.0
Vertical Section:	Depth From (TVD) (ft)	+N/-S (ft)	+E/-W (ft)	Direction (°)
	0.0	0.0	0.0	131.48

Plan Sections										
Measured Depth (ft)	Inclination (°)	Azimuth (°)	Vertical Depth (ft)	+N/-S (ft)	+E/-W (ft)	Dogleg Rate (°/100ft)	Build Rate (°/100ft)	Turn Rate (°/100ft)	TFO (°)	Target
0.0	0.00	0.00	0.0	0.0	0.0	0.00	0.00	0.00	0.00	
200.0	0.00	0.00	200.0	0.0	0.0	0.00	0.00	0.00	0.00	
789.3	17.68	130.97	780.0	-59.1	68.1	3.00	3.00	0.00	130.97	
6,878.9	17.68	130.97	6,582.0	-1,271.6	1,464.4	0.00	0.00	0.00	0.00	
7,468.2	0.00	0.00	7,162.0	-1,330.7	1,532.5	3.00	-3.00	0.00	180.00	D30 397 8803D-30 TC
7,590.4	0.31	214.96	7,284.2	-1,331.0	1,532.3	0.25	0.25	-118.69	214.96	
10,968.2	0.31	214.96	10,662.0	-1,345.7	1,522.0	0.00	0.00	0.00	0.00	D30 397 8803D-30 BI
11,468.2	0.31	214.96	11,162.0	-1,347.9	1,520.5	0.00	0.00	0.00	0.00	
12,106.2	0.31	214.96	11,800.0	-1,350.7	1,518.5	0.00	0.00	0.00	0.00	

Cathedral Energy Services

Planning Report

Database:	EDM 2003.21 US Multi Users DB	Local Co-ordinate Reference:	Well 8803D-30 D30 397
Company:	EnCana Oil & Gas (USA) Inc	TVD Reference:	KB 8803D-30 D30 @ 7362.0ft (Original Well Elev)
Project:	Eureka Unit	MD Reference:	KB 8803D-30 D30 @ 7362.0ft (Original Well Elev)
Site:	Sec 19-T3S-R97W	North Reference:	True
Well:	8803D-30 D30 397	Survey Calculation Method:	Minimum Curvature
Wellbore:	DD		
Design:	Plan #1		

Planned Survey

Measured Depth (ft)	Inclination (°)	Azimuth (°)	Vertical Depth (ft)	+N/-S (ft)	+E/-W (ft)	Vertical Section (ft)	Dogleg Rate (°/100ft)	Build Rate (°/100ft)	Comments / Formations
0.0	0.00	0.00	0.0	0.0	0.0	0.0	0.00	0.00	
30.0	0.00	0.00	30.0	0.0	0.0	0.0	0.00	0.00	
60.0	0.00	0.00	60.0	0.0	0.0	0.0	0.00	0.00	
90.0	0.00	0.00	90.0	0.0	0.0	0.0	0.00	0.00	
120.0	0.00	0.00	120.0	0.0	0.0	0.0	0.00	0.00	
150.0	0.00	0.00	150.0	0.0	0.0	0.0	0.00	0.00	
180.0	0.00	0.00	180.0	0.0	0.0	0.0	0.00	0.00	
200.0	0.00	0.00	200.0	0.0	0.0	0.0	0.00	0.00	KOP @ 200'
210.0	0.30	130.97	210.0	0.0	0.0	0.0	3.00	3.00	
240.0	1.20	130.97	240.0	-0.3	0.3	0.4	3.00	3.00	
270.0	2.10	130.97	270.0	-0.8	1.0	1.3	3.00	3.00	
300.0	3.00	130.97	300.0	-1.7	2.0	2.6	3.00	3.00	
330.0	3.90	130.97	329.9	-2.9	3.3	4.4	3.00	3.00	
360.0	4.80	130.97	359.8	-4.4	5.1	6.7	3.00	3.00	
390.0	5.70	130.97	389.7	-6.2	7.1	9.4	3.00	3.00	
420.0	6.60	130.97	419.5	-8.3	9.6	12.7	3.00	3.00	
450.0	7.50	130.97	449.3	-10.7	12.3	16.3	3.00	3.00	
480.0	8.40	130.97	479.0	-13.4	15.5	20.5	3.00	3.00	
510.0	9.30	130.97	508.6	-16.5	19.0	25.1	3.00	3.00	
540.0	10.20	130.97	538.2	-19.8	22.8	30.2	3.00	3.00	
570.0	11.10	130.97	567.7	-23.4	27.0	35.7	3.00	3.00	
600.0	12.00	130.97	597.1	-27.4	31.5	41.7	3.00	3.00	
630.0	12.90	130.97	626.4	-31.6	36.4	48.2	3.00	3.00	
660.0	13.80	130.97	655.6	-36.1	41.6	55.1	3.00	3.00	
690.0	14.70	130.97	684.6	-41.0	47.2	62.5	3.00	3.00	
720.0	15.60	130.97	713.6	-46.1	53.1	70.4	3.00	3.00	
750.0	16.50	130.97	742.4	-51.6	59.4	78.6	3.00	3.00	
780.0	17.40	130.97	771.1	-57.3	66.0	87.4	3.00	3.00	
789.3	17.68	130.97	780.0	-59.1	68.1	90.2	3.00	3.00	EOB; Inc=17.6°
810.0	17.68	130.97	799.7	-63.3	72.9	96.5	0.00	0.00	
840.0	17.68	130.97	828.3	-69.2	79.7	105.6	0.00	0.00	
870.0	17.68	130.97	856.9	-75.2	86.6	114.7	0.00	0.00	
900.0	17.68	130.97	885.5	-81.2	93.5	123.8	0.00	0.00	
930.0	17.68	130.97	914.0	-87.2	100.4	132.9	0.00	0.00	
960.0	17.68	130.97	942.6	-93.1	107.2	142.0	0.00	0.00	
990.0	17.68	130.97	971.2	-99.1	114.1	151.1	0.00	0.00	
1,020.0	17.68	130.97	999.8	-105.1	121.0	160.2	0.00	0.00	
1,050.0	17.68	130.97	1,028.4	-111.0	127.9	169.4	0.00	0.00	
1,080.0	17.68	130.97	1,057.0	-117.0	134.8	178.5	0.00	0.00	
1,110.0	17.68	130.97	1,085.5	-123.0	141.6	187.6	0.00	0.00	
1,140.0	17.68	130.97	1,114.1	-129.0	148.5	196.7	0.00	0.00	
1,170.0	17.68	130.97	1,142.7	-134.9	155.4	205.8	0.00	0.00	
1,200.0	17.68	130.97	1,171.3	-140.9	162.3	214.9	0.00	0.00	
1,230.0	17.68	130.97	1,199.9	-146.9	169.2	224.0	0.00	0.00	
1,260.0	17.68	130.97	1,228.5	-152.9	176.0	233.1	0.00	0.00	
1,290.0	17.68	130.97	1,257.0	-158.8	182.9	242.2	0.00	0.00	
1,320.0	17.68	130.97	1,285.6	-164.8	189.8	251.3	0.00	0.00	
1,350.0	17.68	130.97	1,314.2	-170.8	196.7	260.5	0.00	0.00	
1,380.0	17.68	130.97	1,342.8	-176.7	203.5	269.6	0.00	0.00	
1,410.0	17.68	130.97	1,371.4	-182.7	210.4	278.7	0.00	0.00	
1,440.0	17.68	130.97	1,400.0	-188.7	217.3	287.8	0.00	0.00	
1,470.0	17.68	130.97	1,428.5	-194.7	224.2	296.9	0.00	0.00	

Cathedral Energy Services

Planning Report

Database:	EDM 2003.21 US Multi Users DB	Local Co-ordinate Reference:	Well 8803D-30 D30 397
Company:	EnCana Oil & Gas (USA) Inc	TVD Reference:	KB 8803D-30 D30 @ 7362.0ft (Original Well Elev)
Project:	Eureka Unit	MD Reference:	KB 8803D-30 D30 @ 7362.0ft (Original Well Elev)
Site:	Sec 19-T3S-R97W	North Reference:	True
Well:	8803D-30 D30 397	Survey Calculation Method:	Minimum Curvature
Wellbore:	DD		
Design:	Plan #1		

Planned Survey

Measured Depth (ft)	Inclination (°)	Azimuth (°)	Vertical Depth (ft)	+N/-S (ft)	+E/-W (ft)	Vertical Section (ft)	Dogleg Rate (°/100ft)	Build Rate (°/100ft)	Comments / Formations
1,500.0	17.68	130.97	1,457.1	-200.6	231.1	306.0	0.00	0.00	
1,530.0	17.68	130.97	1,485.7	-206.6	237.9	315.1	0.00	0.00	
1,560.0	17.68	130.97	1,514.3	-212.6	244.8	324.2	0.00	0.00	
1,590.0	17.68	130.97	1,542.9	-218.6	251.7	333.3	0.00	0.00	
1,620.0	17.68	130.97	1,571.5	-224.5	258.6	342.4	0.00	0.00	
1,650.0	17.68	130.97	1,600.0	-230.5	265.5	351.6	0.00	0.00	
1,680.0	17.68	130.97	1,628.6	-236.5	272.3	360.7	0.00	0.00	
1,710.0	17.68	130.97	1,657.2	-242.4	279.2	369.8	0.00	0.00	
1,740.0	17.68	130.97	1,685.8	-248.4	286.1	378.9	0.00	0.00	
1,770.0	17.68	130.97	1,714.4	-254.4	293.0	388.0	0.00	0.00	
1,800.0	17.68	130.97	1,743.0	-260.4	299.9	397.1	0.00	0.00	
1,830.0	17.68	130.97	1,771.5	-266.3	306.7	406.2	0.00	0.00	
1,860.0	17.68	130.97	1,800.1	-272.3	313.6	415.3	0.00	0.00	
1,890.0	17.68	130.97	1,828.7	-278.3	320.5	424.4	0.00	0.00	
1,920.0	17.68	130.97	1,857.3	-284.3	327.4	433.5	0.00	0.00	
1,950.0	17.68	130.97	1,885.9	-290.2	334.2	442.6	0.00	0.00	
1,980.0	17.68	130.97	1,914.5	-296.2	341.1	451.8	0.00	0.00	
2,010.0	17.68	130.97	1,943.0	-302.2	348.0	460.9	0.00	0.00	
2,040.0	17.68	130.97	1,971.6	-308.1	354.9	470.0	0.00	0.00	
2,070.0	17.68	130.97	2,000.2	-314.1	361.8	479.1	0.00	0.00	
2,100.0	17.68	130.97	2,028.8	-320.1	368.6	488.2	0.00	0.00	
2,130.0	17.68	130.97	2,057.4	-326.1	375.5	497.3	0.00	0.00	
2,160.0	17.68	130.97	2,086.0	-332.0	382.4	506.4	0.00	0.00	
2,190.0	17.68	130.97	2,114.5	-338.0	389.3	515.5	0.00	0.00	
2,220.0	17.68	130.97	2,143.1	-344.0	396.2	524.6	0.00	0.00	
2,250.0	17.68	130.97	2,171.7	-350.0	403.0	533.7	0.00	0.00	
2,280.0	17.68	130.97	2,200.3	-355.9	409.9	542.9	0.00	0.00	
2,310.0	17.68	130.97	2,228.9	-361.9	416.8	552.0	0.00	0.00	
2,340.0	17.68	130.97	2,257.5	-367.9	423.7	561.1	0.00	0.00	
2,370.0	17.68	130.97	2,286.0	-373.9	430.5	570.2	0.00	0.00	
2,400.0	17.68	130.97	2,314.6	-379.8	437.4	579.3	0.00	0.00	
2,430.0	17.68	130.97	2,343.2	-385.8	444.3	588.4	0.00	0.00	
2,460.0	17.68	130.97	2,371.8	-391.8	451.2	597.5	0.00	0.00	
2,490.0	17.68	130.97	2,400.4	-397.7	458.1	606.6	0.00	0.00	

Cathedral Energy Services

Planning Report

Database:	EDM 2003.21 US Multi Users DB	Local Co-ordinate Reference:	Well 8803D-30 D30 397
Company:	EnCana Oil & Gas (USA) Inc	TVD Reference:	KB 8803D-30 D30 @ 7362.0ft (Original Well Elev)
Project:	Eureka Unit	MD Reference:	KB 8803D-30 D30 @ 7362.0ft (Original Well Elev)
Site:	Sec 19-T3S-R97W	North Reference:	True
Well:	8803D-30 D30 397	Survey Calculation Method:	Minimum Curvature
Wellbore:	DD		
Design:	Plan #1		

Planned Survey

Measured Depth (ft)	Inclination (°)	Azimuth (°)	Vertical Depth (ft)	+N/-S (ft)	+E/-W (ft)	Vertical Section (ft)	Dogleg Rate (°/100ft)	Build Rate (°/100ft)	Comments / Formations
2,500.0	17.68	130.97	2,409.9	-399.7	460.4	609.7	0.00	0.00	
2,600.0	17.68	130.97	2,505.2	-419.6	483.3	640.0	0.00	0.00	
2,700.0	17.68	130.97	2,600.5	-439.6	506.2	670.4	0.00	0.00	
2,800.0	17.68	130.97	2,695.7	-459.5	529.1	700.8	0.00	0.00	
2,900.0	17.68	130.97	2,791.0	-479.4	552.1	731.1	0.00	0.00	
3,000.0	17.68	130.97	2,886.3	-499.3	575.0	761.5	0.00	0.00	
3,100.0	17.68	130.97	2,981.6	-519.2	597.9	791.9	0.00	0.00	
3,200.0	17.68	130.97	3,076.9	-539.1	620.9	822.2	0.00	0.00	
3,300.0	17.68	130.97	3,172.1	-559.0	643.8	852.6	0.00	0.00	
3,400.0	17.68	130.97	3,267.4	-578.9	666.7	883.0	0.00	0.00	
3,500.0	17.68	130.97	3,362.7	-598.8	689.6	913.3	0.00	0.00	
3,600.0	17.68	130.97	3,458.0	-618.7	712.6	943.7	0.00	0.00	
3,700.0	17.68	130.97	3,553.2	-638.7	735.5	974.0	0.00	0.00	
3,800.0	17.68	130.97	3,648.5	-658.6	758.4	1,004.4	0.00	0.00	
3,900.0	17.68	130.97	3,743.8	-678.5	781.4	1,034.8	0.00	0.00	
4,000.0	17.68	130.97	3,839.1	-698.4	804.3	1,065.1	0.00	0.00	
4,100.0	17.68	130.97	3,934.4	-718.3	827.2	1,095.5	0.00	0.00	
4,200.0	17.68	130.97	4,029.6	-738.2	850.2	1,125.9	0.00	0.00	
4,300.0	17.68	130.97	4,124.9	-758.1	873.1	1,156.2	0.00	0.00	
4,400.0	17.68	130.97	4,220.2	-778.0	896.0	1,186.6	0.00	0.00	
4,500.0	17.68	130.97	4,315.5	-797.9	918.9	1,217.0	0.00	0.00	
4,600.0	17.68	130.97	4,410.7	-817.8	941.9	1,247.3	0.00	0.00	
4,700.0	17.68	130.97	4,506.0	-837.8	964.8	1,277.7	0.00	0.00	
4,800.0	17.68	130.97	4,601.3	-857.7	987.7	1,308.1	0.00	0.00	
4,900.0	17.68	130.97	4,696.6	-877.6	1,010.7	1,338.4	0.00	0.00	
5,000.0	17.68	130.97	4,791.9	-897.5	1,033.6	1,368.8	0.00	0.00	
5,100.0	17.68	130.97	4,887.1	-917.4	1,056.5	1,399.2	0.00	0.00	
5,200.0	17.68	130.97	4,982.4	-937.3	1,079.4	1,429.5	0.00	0.00	
5,300.0	17.68	130.97	5,077.7	-957.2	1,102.4	1,459.9	0.00	0.00	
5,400.0	17.68	130.97	5,173.0	-977.1	1,125.3	1,490.3	0.00	0.00	
5,500.0	17.68	130.97	5,268.2	-997.0	1,148.2	1,520.6	0.00	0.00	
5,600.0	17.68	130.97	5,363.5	-1,016.9	1,171.2	1,551.0	0.00	0.00	
5,700.0	17.68	130.97	5,458.8	-1,036.9	1,194.1	1,581.4	0.00	0.00	
5,800.0	17.68	130.97	5,554.1	-1,056.8	1,217.0	1,611.7	0.00	0.00	
5,900.0	17.68	130.97	5,649.4	-1,076.7	1,239.9	1,642.1	0.00	0.00	
6,000.0	17.68	130.97	5,744.6	-1,096.6	1,262.9	1,672.5	0.00	0.00	
6,100.0	17.68	130.97	5,839.9	-1,116.5	1,285.8	1,702.8	0.00	0.00	
6,200.0	17.68	130.97	5,935.2	-1,136.4	1,308.7	1,733.2	0.00	0.00	
6,300.0	17.68	130.97	6,030.5	-1,156.3	1,331.7	1,763.6	0.00	0.00	
6,400.0	17.68	130.97	6,125.7	-1,176.2	1,354.6	1,793.9	0.00	0.00	
6,500.0	17.68	130.97	6,221.0	-1,196.1	1,377.5	1,824.3	0.00	0.00	
6,574.5	17.68	130.97	6,292.0	-1,211.0	1,394.6	1,846.9	0.00	0.00	Williams Fork
6,600.0	17.68	130.97	6,316.3	-1,216.0	1,400.5	1,854.7	0.00	0.00	
6,700.0	17.68	130.97	6,411.6	-1,235.9	1,423.4	1,885.0	0.00	0.00	
6,800.0	17.68	130.97	6,506.9	-1,255.9	1,446.3	1,915.4	0.00	0.00	
6,878.9	17.68	130.97	6,582.0	-1,271.6	1,464.4	1,939.3	0.00	0.00	Start Drop -3.00
6,900.0	17.05	130.97	6,602.2	-1,275.7	1,469.2	1,945.6	3.00	-3.00	
6,962.3	15.18	130.97	6,662.0	-1,287.0	1,482.2	1,962.9	3.00	-3.00	Top of Gas; Inc=15°
6,979.6	14.66	130.97	6,678.7	-1,289.9	1,485.6	1,967.4	3.00	-3.00	D30 397 8803D-30 TOG
7,000.0	14.05	130.97	6,698.5	-1,293.3	1,489.4	1,972.4	3.00	-3.00	
7,100.0	11.05	130.97	6,796.1	-1,307.5	1,505.8	1,994.2	3.00	-3.00	
7,200.0	8.05	130.97	6,894.7	-1,318.4	1,518.3	2,010.7	3.00	-3.00	

Cathedral Energy Services

Planning Report

Database:	EDM 2003.21 US Multi Users DB	Local Co-ordinate Reference:	Well 8803D-30 D30 397
Company:	EnCana Oil & Gas (USA) Inc	TVD Reference:	KB 8803D-30 D30 @ 7362.0ft (Original Well Elev)
Project:	Eureka Unit	MD Reference:	KB 8803D-30 D30 @ 7362.0ft (Original Well Elev)
Site:	Sec 19-T3S-R97W	North Reference:	True
Well:	8803D-30 D30 397	Survey Calculation Method:	Minimum Curvature
Wellbore:	DD		
Design:	Plan #1		

Planned Survey

Measured Depth (ft)	Inclination (°)	Azimuth (°)	Vertical Depth (ft)	+N/-S (ft)	+E/-W (ft)	Vertical Section (ft)	Dogleg Rate (°/100ft)	Build Rate (°/100ft)	Comments / Formations
7,300.0	5.05	130.97	6,994.0	-1,325.8	1,526.9	2,022.1	3.00	-3.00	
7,400.0	2.05	130.97	7,093.8	-1,329.9	1,531.6	2,028.3	3.00	-3.00	
7,468.2	0.00	0.00	7,162.0	-1,330.7	1,532.5	2,029.5	3.00	-3.00	EOD; Inc=0° - D30 397 8803D-30 TGT
7,500.0	0.08	214.96	7,193.8	-1,330.7	1,532.5	2,029.5	0.25	0.25	
7,590.4	0.31	214.96	7,284.2	-1,331.0	1,532.3	2,029.6	0.25	0.25	
7,600.0	0.31	214.96	7,293.8	-1,331.0	1,532.3	2,029.6	0.00	0.00	
7,700.0	0.31	214.96	7,393.8	-1,331.4	1,532.0	2,029.6	0.00	0.00	
7,800.0	0.31	214.96	7,493.8	-1,331.9	1,531.7	2,029.7	0.00	0.00	
7,900.0	0.31	214.96	7,593.8	-1,332.3	1,531.4	2,029.8	0.00	0.00	
8,000.0	0.31	214.96	7,693.8	-1,332.8	1,531.1	2,029.8	0.00	0.00	
8,100.0	0.31	214.96	7,793.8	-1,333.2	1,530.8	2,029.9	0.00	0.00	
8,200.0	0.31	214.96	7,893.8	-1,333.6	1,530.5	2,029.9	0.00	0.00	
8,300.0	0.31	214.96	7,993.8	-1,334.1	1,530.1	2,030.0	0.00	0.00	
8,400.0	0.31	214.96	8,093.8	-1,334.5	1,529.8	2,030.1	0.00	0.00	
8,500.0	0.31	214.96	8,193.8	-1,334.9	1,529.5	2,030.1	0.00	0.00	
8,600.0	0.31	214.96	8,293.8	-1,335.4	1,529.2	2,030.2	0.00	0.00	
8,700.0	0.31	214.96	8,393.8	-1,335.8	1,528.9	2,030.2	0.00	0.00	
8,800.0	0.31	214.96	8,493.8	-1,336.3	1,528.6	2,030.3	0.00	0.00	
8,900.0	0.31	214.96	8,593.8	-1,336.7	1,528.3	2,030.4	0.00	0.00	
9,000.0	0.31	214.96	8,693.8	-1,337.1	1,528.0	2,030.4	0.00	0.00	
9,100.0	0.31	214.96	8,793.8	-1,337.6	1,527.7	2,030.5	0.00	0.00	
9,200.0	0.31	214.96	8,893.8	-1,338.0	1,527.4	2,030.5	0.00	0.00	
9,300.0	0.31	214.96	8,993.8	-1,338.4	1,527.1	2,030.6	0.00	0.00	
9,400.0	0.31	214.96	9,093.8	-1,338.9	1,526.8	2,030.7	0.00	0.00	
9,500.0	0.31	214.96	9,193.8	-1,339.3	1,526.5	2,030.7	0.00	0.00	
9,600.0	0.31	214.96	9,293.8	-1,339.7	1,526.2	2,030.8	0.00	0.00	
9,700.0	0.31	214.96	9,393.8	-1,340.2	1,525.9	2,030.8	0.00	0.00	
9,800.0	0.31	214.96	9,493.8	-1,340.6	1,525.6	2,030.9	0.00	0.00	
9,900.0	0.31	214.96	9,593.8	-1,341.1	1,525.3	2,031.0	0.00	0.00	
10,000.0	0.31	214.96	9,693.8	-1,341.5	1,525.0	2,031.0	0.00	0.00	
10,100.0	0.31	214.96	9,793.8	-1,341.9	1,524.6	2,031.1	0.00	0.00	
10,200.0	0.31	214.96	9,893.8	-1,342.4	1,524.3	2,031.1	0.00	0.00	
10,300.0	0.31	214.96	9,993.8	-1,342.8	1,524.0	2,031.2	0.00	0.00	
10,388.2	0.31	214.96	10,082.0	-1,343.2	1,523.8	2,031.3	0.00	0.00	Rollins
10,400.0	0.31	214.96	10,093.8	-1,343.2	1,523.7	2,031.3	0.00	0.00	
10,500.0	0.31	214.96	10,193.8	-1,343.7	1,523.4	2,031.3	0.00	0.00	
10,538.2	0.31	214.96	10,232.0	-1,343.8	1,523.3	2,031.4	0.00	0.00	Cozette
10,600.0	0.31	214.96	10,293.8	-1,344.1	1,523.1	2,031.4	0.00	0.00	
10,700.0	0.31	214.96	10,393.8	-1,344.6	1,522.8	2,031.5	0.00	0.00	
10,738.2	0.31	214.96	10,432.0	-1,344.7	1,522.7	2,031.5	0.00	0.00	Corcoran
10,800.0	0.31	214.96	10,493.8	-1,345.0	1,522.5	2,031.5	0.00	0.00	
10,900.0	0.31	214.96	10,593.8	-1,345.4	1,522.2	2,031.6	0.00	0.00	
10,968.2	0.31	214.96	10,662.0	-1,345.7	1,522.0	2,031.6	0.00	0.00	Sego - D30 397 8803D-30 BHL - D30 397 8803
11,000.0	0.31	214.96	10,693.8	-1,345.9	1,521.9	2,031.6	0.00	0.00	
11,100.0	0.31	214.96	10,793.8	-1,346.3	1,521.6	2,031.7	0.00	0.00	
11,200.0	0.31	214.96	10,893.8	-1,346.7	1,521.3	2,031.8	0.00	0.00	
11,300.0	0.31	214.96	10,993.8	-1,347.2	1,521.0	2,031.8	0.00	0.00	
11,400.0	0.31	214.96	11,093.8	-1,347.6	1,520.7	2,031.9	0.00	0.00	
11,468.2	0.31	214.96	11,162.0	-1,347.9	1,520.5	2,031.9	0.00	0.00	Drillers TD @ 11468'
11,500.0	0.31	214.96	11,193.8	-1,348.1	1,520.4	2,031.9	0.00	0.00	
11,600.0	0.31	214.96	11,293.8	-1,348.5	1,520.1	2,032.0	0.00	0.00	
11,700.0	0.31	214.96	11,393.8	-1,348.9	1,519.8	2,032.1	0.00	0.00	

Cathedral Energy Services

Planning Report

Database:	EDM 2003.21 US Multi Users DB	Local Co-ordinate Reference:	Well 8803D-30 D30 397
Company:	EnCana Oil & Gas (USA) Inc	TVD Reference:	KB 8803D-30 D30 @ 7362.0ft (Original Well Elev)
Project:	Eureka Unit	MD Reference:	KB 8803D-30 D30 @ 7362.0ft (Original Well Elev)
Site:	Sec 19-T3S-R97W	North Reference:	True
Well:	8803D-30 D30 397	Survey Calculation Method:	Minimum Curvature
Wellbore:	DD		
Design:	Plan #1		

Planned Survey

Measured Depth (ft)	Inclination (°)	Azimuth (°)	Vertical Depth (ft)	+N/-S (ft)	+E/-W (ft)	Vertical Section (ft)	Dogleg Rate (°/100ft)	Build Rate (°/100ft)	Comments / Formations
11,800.0	0.31	214.96	11,493.8	-1,349.4	1,519.5	2,032.1	0.00	0.00	
11,900.0	0.31	214.96	11,593.8	-1,349.8	1,519.1	2,032.2	0.00	0.00	
12,000.0	0.31	214.96	11,693.8	-1,350.2	1,518.8	2,032.2	0.00	0.00	
12,100.0	0.31	214.96	11,793.8	-1,350.7	1,518.5	2,032.3	0.00	0.00	
12,106.2	0.31	214.96	11,800.0	-1,350.7	1,518.5	2,032.3	0.00	0.00	Permit TD @ 12106'

Targets

Target Name - hit/miss target - Shape	Dip Angle (°)	Dip Dir. (°)	TVD (ft)	+N/-S (ft)	+E/-W (ft)	Northing (ft)	Easting (ft)	Latitude	Longitude
D30 397 8803D-30 BHL - plan hits target center - Rectangle (sides W30.0 H50.0 D0.0)	0.00	0.00	10,662.0	-1,345.7	1,522.0	1,715,419.31	2,205,993.97	39° 45' 49.44 N	108° 19' 29.42 W
D30 397 8803D-30 TOG - plan misses target center by 68.7ft at 6979.6ft MD (6678.7 TVD, -1289.9 N, 1485.6 E) - Rectangle (sides W100.0 H200.0 D300.0)	0.00	0.00	6,662.0	-1,345.7	1,522.0	1,715,419.31	2,205,993.97	39° 45' 49.44 N	108° 19' 29.42 W
D30 397 8803D-30 TGT - plan hits target center - Rectangle (sides W100.0 H200.0 D0.0)	0.00	0.00	10,662.0	-1,345.7	1,522.0	1,715,419.31	2,205,993.97	39° 45' 49.44 N	108° 19' 29.42 W
D30 397 8803D-30 TGT - plan hits target center - Point	0.00	0.00	7,162.0	-1,330.7	1,532.5	1,715,434.00	2,206,004.94	39° 45' 49.59 N	108° 19' 29.29 W

Formations

Measured Depth (ft)	Vertical Depth (ft)	Name	Lithology	Dip (°)	Dip Direction (°)
6,574.5	6,292.0	Williams Fork		0.00	
6,962.3	6,662.0	Top of Gas; Inc=15°		0.00	
10,388.2	10,082.0	Rollins		0.00	
10,538.2	10,232.0	Cozette		0.00	
10,738.2	10,432.0	Corcoran		0.00	
10,968.2	10,662.0	Sego		0.00	

Plan Annotations

Measured Depth (ft)	Vertical Depth (ft)	+N/-S (ft)	+E/-W (ft)	Comment
200.0	200.0	0.0	0.0	KOP @ 200'
789.3	780.0	-59.1	68.1	EOB; Inc=17.6°
6,878.9	6,582.0	-1,271.6	1,464.4	Start Drop -3.00
7,468.2	7,162.0	-1,330.7	1,532.5	EOD; Inc=0°
11,468.2	11,162.0	-1,347.9	1,520.5	Drillers TD @ 11468'
12,106.2	11,800.0	-1,350.7	1,518.5	Permit TD @ 12106'

Cathedral Energy Services

Anticollision Report

Company:	EnCana Oil & Gas (USA) Inc	Local Co-ordinate Reference:	Well 8803D-30 D30 397
Project:	Eureka Unit	TVD Reference:	KB 8803D-30 D30 @ 7362.0ft (Original Well Elev)
Reference Site:	Sec 19-T3S-R97W	MD Reference:	KB 8803D-30 D30 @ 7362.0ft (Original Well Elev)
Site Error:	0.0ft	North Reference:	True
Reference Well:	8803D-30 D30 397	Survey Calculation Method:	Minimum Curvature
Well Error:	0.0ft	Output errors are at	2.00 sigma
Reference Wellbore	DD	Database:	EDM 2003.21 US Multi Users DB
Reference Design:	Plan #1	Offset TVD Reference:	Offset Datum

Reference	Plan #1		
Filter type:	NO GLOBAL FILTER: Using user defined selection & filtering criteria		
Interpolation Method:	MD Interval 100.0ft	Error Model:	Systematic Ellipse
Depth Range:	Unlimited	Scan Method:	Closest Approach 3D
Results Limited by:	Maximum center-center distance of 100.0ft	Error Surface:	Elliptical Conic
Warning Levels Evaluated at:	2.00 Sigma		

Survey Tool Program	Date	2/26/2009		
From (ft)	To (ft)	Survey (Wellbore)	Tool Name	Description
0.0	12,106.2	Plan #1 (DD)	MWD	Geolink MWD

Summary						
Site Name	Reference Measured Depth (ft)	Offset Measured Depth (ft)	Distance Between Centres (ft)	Distance Between Ellipses (ft)	Separation Factor	Warning
Offset Well - Wellbore - Design						
Sec 19-T3S-R97W						
8806D-30 D30 397 - DD - Plan #1	353.2	352.8	18.6	17.4	15.642	CC, ES
8806D-30 D30 397 - DD - Plan #1	1,200.0	1,195.3	86.1	77.1	9.573	SF
8807B-24 D30 397 - DD - Plan #1	200.0	200.0	11.5	10.9	18.510	CC, ES
8807B-24 D30 397 - DD - Plan #1	300.0	299.1	16.6	15.6	17.095	SF
8807B-25 D30 397 - DD - Plan #1	200.0	200.0	28.5	27.8	45.802	CC, ES
8807B-25 D30 397 - DD - Plan #1	400.0	396.0	38.9	37.5	28.489	SF
8809B-25 D30 397 - DD - Plan #1	200.0	200.0	27.2	26.6	43.827	CC, ES
8809B-25 D30 397 - DD - Plan #1	500.0	493.8	45.3	43.5	24.438	SF
8810B-24 D30 397 - DD - Plan #1	200.0	200.0	8.1	7.4	12.983	CC, ES, SF
8814B-19 D30 397 - DD - Plan #1	200.0	200.0	8.3	7.6	13.282	CC, ES
8814B-19 D30 397 - DD - Plan #1	300.0	299.7	11.1	10.1	11.264	SF
8815D-24 D30 397 - DD - Plan #1	200.0	200.0	21.3	20.6	34.217	CC, ES
8815D-24 D30 397 - DD - Plan #1	300.0	299.1	23.0	22.0	23.412	SF

Cathedral Energy Services

Anticollision Report

Company:	EnCana Oil & Gas (USA) Inc	Local Co-ordinate Reference:	Well 8803D-30 D30 397
Project:	Eureka Unit	TVD Reference:	KB 8803D-30 D30 @ 7362.0ft (Original Well Elev)
Reference Site:	Sec 19-T3S-R97W	MD Reference:	KB 8803D-30 D30 @ 7362.0ft (Original Well Elev)
Site Error:	0.0ft	North Reference:	True
Reference Well:	8803D-30 D30 397	Survey Calculation Method:	Minimum Curvature
Well Error:	0.0ft	Output errors are at	2.00 sigma
Reference Wellbore	DD	Database:	EDM 2003.21 US Multi Users DB
Reference Design:	Plan #1	Offset TVD Reference:	Offset Datum

Offset Design Sec 19-T3S-R97W - 8806D-30 D30 397 - DD - Plan #1												Offset Site Error:	0.0 ft
Survey Program: 0-MWD												Offset Well Error:	0.0 ft
Reference		Offset		Semi Major Axis			Distance						Warning
Measured Depth (ft)	Vertical Depth (ft)	Measured Depth (ft)	Vertical Depth (ft)	Reference (ft)	Offset (ft)	Highside Toolface (°)	Offset Wellbore Centre +N/-S (ft)	+E/-W (ft)	Between Centres (ft)	Between Ellipses (ft)	Total Uncertainty Axis	Separation Factor	
0.0	0.0	0.0	0.0	0.0	0.0	-164.13	-19.2	-5.5	20.0				
100.0	100.0	100.0	100.0	0.1	0.1	-164.13	-19.2	-5.5	20.0	19.7	0.27	73.410	
200.0	200.0	200.0	200.0	0.3	0.3	-164.13	-19.2	-5.5	20.0	19.4	0.62	32.168	
300.0	300.0	300.0	300.0	0.5	0.5	72.08	-19.2	-5.5	19.0	18.0	0.98	19.454	
353.2	353.0	352.8	352.8	0.6	0.6	80.59	-19.9	-5.1	18.6	17.4	1.19	15.642 CC, ES	
400.0	399.6	399.3	399.3	0.7	0.7	88.51	-21.5	-4.2	18.9	17.6	1.38	13.744	
500.0	498.8	498.9	498.6	1.0	0.9	103.49	-28.2	-0.3	22.1	20.2	1.87	11.841	
600.0	597.1	598.7	597.4	1.4	1.1	113.29	-39.4	6.2	28.0	25.5	2.45	11.410	
700.0	694.3	698.5	695.6	1.8	1.5	118.56	-55.1	15.3	36.0	32.9	3.16	11.391	
800.0	790.2	798.5	792.8	2.3	1.9	120.99	-75.2	27.0	45.8	41.8	4.02	11.408	
900.0	885.5	898.5	888.8	2.9	2.4	119.28	-99.7	41.2	55.6	50.5	5.04	11.026	
1,000.0	980.7	998.4	982.9	3.5	3.1	113.50	-128.4	57.9	64.6	58.4	6.27	10.303	
1,100.0	1,076.0	1,097.5	1,074.5	4.0	3.8	105.22	-161.2	76.9	74.3	66.6	7.64	9.720	
1,200.0	1,171.3	1,195.3	1,162.9	4.6	4.5	95.66	-197.4	97.9	86.1	77.1	8.99	9.573 SF	

Cathedral Energy Services

Anticollision Report

Company:	EnCana Oil & Gas (USA) Inc	Local Co-ordinate Reference:	Well 8803D-30 D30 397
Project:	Eureka Unit	TVD Reference:	KB 8803D-30 D30 @ 7362.0ft (Original Well Elev)
Reference Site:	Sec 19-T3S-R97W	MD Reference:	KB 8803D-30 D30 @ 7362.0ft (Original Well Elev)
Site Error:	0.0ft	North Reference:	True
Reference Well:	8803D-30 D30 397	Survey Calculation Method:	Minimum Curvature
Well Error:	0.0ft	Output errors are at	2.00 sigma
Reference Wellbore	DD	Database:	EDM 2003.21 US Multi Users DB
Reference Design:	Plan #1	Offset TVD Reference:	Offset Datum

Offset Design Sec 19-T3S-R97W - 8807B-24 D30 397 - DD - Plan #1												Offset Site Error:	0.0 ft
Survey Program: 0-MWD												Offset Well Error:	0.0 ft
Reference		Offset		Semi Major Axis			Distance						
Measured Depth (ft)	Vertical Depth (ft)	Measured Depth (ft)	Vertical Depth (ft)	Reference (ft)	Offset (ft)	Highside Toolface (°)	Offset Wellbore Centre +N/-S (ft)	+E/-W (ft)	Between Centres (ft)	Between Ellipses (ft)	Total Uncertainty Axis	Separation Factor	Warning
0.0	0.0	0.0	0.0	0.0	0.0	-28.38	10.1	-5.5	11.5				
100.0	100.0	100.0	100.0	0.1	0.1	-28.38	10.1	-5.5	11.5	11.2	0.27	42.240	
200.0	200.0	200.0	200.0	0.3	0.3	-28.38	10.1	-5.5	11.5	10.9	0.62	18.510 CC, ES	
300.0	300.0	299.1	299.1	0.5	0.5	-164.00	12.1	-7.1	16.6	15.6	0.97	17.095 SF	
400.0	399.6	396.7	396.4	0.7	0.7	-168.99	18.1	-11.7	31.9	30.6	1.31	24.322	
500.0	498.8	491.2	490.1	1.0	1.0	-171.33	27.5	-19.2	57.3	55.7	1.65	34.831	
600.0	597.1	581.3	578.8	1.4	1.3	-172.40	39.9	-28.9	92.3	90.3	1.97	46.923	

Cathedral Energy Services

Anticollision Report

Company:	EnCana Oil & Gas (USA) Inc	Local Co-ordinate Reference:	Well 8803D-30 D30 397
Project:	Eureka Unit	TVD Reference:	KB 8803D-30 D30 @ 7362.0ft (Original Well Elev)
Reference Site:	Sec 19-T3S-R97W	MD Reference:	KB 8803D-30 D30 @ 7362.0ft (Original Well Elev)
Site Error:	0.0ft	North Reference:	True
Reference Well:	8803D-30 D30 397	Survey Calculation Method:	Minimum Curvature
Well Error:	0.0ft	Output errors are at	2.00 sigma
Reference Wellbore	DD	Database:	EDM 2003.21 US Multi Users DB
Reference Design:	Plan #1	Offset TVD Reference:	Offset Datum

Offset Design Sec 19-T3S-R97W - 8807B-25 D30 397 - DD - Plan #1													Offset Site Error:	0.0 ft
Survey Program: 0-MWD													Offset Well Error:	0.0 ft
Reference		Offset		Semi Major Axis			Distance						Warning	
Measured Depth (ft)	Vertical Depth (ft)	Measured Depth (ft)	Vertical Depth (ft)	Reference (ft)	Offset (ft)	Highside Toolface (°)	Offset Wellbore Centre +N/-S (ft)	+E/-W (ft)	Between Centres (ft)	Between Ellipses (ft)	Total Uncertainty Axis	Separation Factor		
0.0	0.0	0.0	0.0	0.0	0.0	-148.58	-24.3	-14.8	28.5					
100.0	100.0	100.0	100.0	0.1	0.1	-148.58	-24.3	-14.8	28.5	28.2	0.27	104.522		
200.0	200.0	200.0	200.0	0.3	0.3	-148.58	-24.3	-14.8	28.5	27.8	0.62	45.802 CC, ES		
300.0	300.0	298.5	298.4	0.5	0.5	86.85	-25.8	-16.8	30.6	29.7	0.98	31.360		
400.0	399.6	396.0	395.6	0.7	0.7	100.83	-30.4	-22.8	38.9	37.5	1.37	28.489 SF		
500.0	498.8	491.7	490.5	1.0	1.0	113.40	-37.9	-32.4	55.6	53.8	1.80	30.895		
600.0	597.1	584.7	582.1	1.4	1.3	121.56	-47.9	-45.4	81.0	78.7	2.29	35.353		

Cathedral Energy Services

Anticollision Report

Company:	EnCana Oil & Gas (USA) Inc	Local Co-ordinate Reference:	Well 8803D-30 D30 397
Project:	Eureka Unit	TVD Reference:	KB 8803D-30 D30 @ 7362.0ft (Original Well Elev)
Reference Site:	Sec 19-T3S-R97W	MD Reference:	KB 8803D-30 D30 @ 7362.0ft (Original Well Elev)
Site Error:	0.0ft	North Reference:	True
Reference Well:	8803D-30 D30 397	Survey Calculation Method:	Minimum Curvature
Well Error:	0.0ft	Output errors are at	2.00 sigma
Reference Wellbore	DD	Database:	EDM 2003.21 US Multi Users DB
Reference Design:	Plan #1	Offset TVD Reference:	Offset Datum

Offset Design Sec 19-T3S-R97W - 8809B-25 D30 397 - DD - Plan #1													Offset Site Error:	0.0 ft
Survey Program: 0-MWD													Offset Well Error:	0.0 ft
Reference		Offset		Semi Major Axis			Distance						Warning	
Measured Depth (ft)	Vertical Depth (ft)	Measured Depth (ft)	Vertical Depth (ft)	Reference (ft)	Offset (ft)	Highside Toolface (°)	Offset Wellbore Centre +N/-S (ft)	+E/-W (ft)	Between Centres (ft)	Between Ellipses (ft)	Total Uncertainty Axis	Separation Factor		
0.0	0.0	0.0	0.0	0.0	0.0	-165.04	-26.3	-7.0	27.2					
100.0	100.0	100.0	100.0	0.1	0.1	-165.04	-26.3	-7.0	27.2	27.0	0.27	100.015		
200.0	200.0	200.0	200.0	0.3	0.3	-165.04	-26.3	-7.0	27.2	26.6	0.62	43.827 CC, ES		
300.0	300.0	298.5	298.5	0.5	0.5	68.64	-28.8	-7.7	28.8	27.8	0.98	29.491		
400.0	399.6	396.6	396.2	0.7	0.7	79.71	-36.0	-9.8	34.3	32.9	1.37	25.016		
500.0	498.8	493.8	492.6	1.0	1.0	91.27	-48.0	-13.2	45.3	43.5	1.86	24.438 SF		
600.0	597.1	589.6	586.9	1.4	1.3	99.93	-64.4	-17.8	62.5	60.1	2.46	25.399		
700.0	694.3	683.8	678.6	1.8	1.7	105.60	-85.0	-23.6	85.6	82.4	3.20	26.790		

Cathedral Energy Services

Anticollision Report

Company:	EnCana Oil & Gas (USA) Inc	Local Co-ordinate Reference:	Well 8803D-30 D30 397
Project:	Eureka Unit	TVD Reference:	KB 8803D-30 D30 @ 7362.0ft (Original Well Elev)
Reference Site:	Sec 19-T3S-R97W	MD Reference:	KB 8803D-30 D30 @ 7362.0ft (Original Well Elev)
Site Error:	0.0ft	North Reference:	True
Reference Well:	8803D-30 D30 397	Survey Calculation Method:	Minimum Curvature
Well Error:	0.0ft	Output errors are at	2.00 sigma
Reference Wellbore	DD	Database:	EDM 2003.21 US Multi Users DB
Reference Design:	Plan #1	Offset TVD Reference:	Offset Datum

Offset Design Sec 19-T3S-R97W - 8810B-24 D30 397 - DD - Plan #1												Offset Site Error:	0.0 ft
Survey Program: 0-MWD												Offset Well Error:	0.0 ft
Reference		Offset		Semi Major Axis			Distance						
Measured Depth (ft)	Vertical Depth (ft)	Measured Depth (ft)	Vertical Depth (ft)	Reference (ft)	Offset (ft)	Highside Toolface (°)	Offset Wellbore Centre +N/-S (ft)	+E/-W (ft)	Between Centres (ft)	Between Ellipses (ft)	Total Uncertainty Axis	Separation Factor	Warning
0.0	0.0	0.0	0.0	0.0	0.0	-75.47	2.0	-7.8	8.1				
100.0	100.0	100.0	100.0	0.1	0.1	-75.47	2.0	-7.8	8.1	7.8	0.27	29.627	
200.0	200.0	200.0	200.0	0.3	0.3	-75.47	2.0	-7.8	8.1	7.4	0.62	12.983 CC, ES, SF	
300.0	300.0	299.3	299.3	0.5	0.5	163.45	3.7	-9.8	13.0	12.0	0.97	13.376	
400.0	399.6	397.1	396.7	0.7	0.7	171.85	8.4	-15.7	28.3	27.0	1.31	21.546	
500.0	498.8	491.7	490.6	1.0	1.0	175.16	16.0	-25.1	53.8	52.1	1.64	32.719	
600.0	597.1	582.0	579.4	1.4	1.3	176.60	26.0	-37.4	88.9	87.0	1.96	45.345	

Cathedral Energy Services

Anticollision Report

Company:	EnCana Oil & Gas (USA) Inc	Local Co-ordinate Reference:	Well 8803D-30 D30 397
Project:	Eureka Unit	TVD Reference:	KB 8803D-30 D30 @ 7362.0ft (Original Well Elev)
Reference Site:	Sec 19-T3S-R97W	MD Reference:	KB 8803D-30 D30 @ 7362.0ft (Original Well Elev)
Site Error:	0.0ft	North Reference:	True
Reference Well:	8803D-30 D30 397	Survey Calculation Method:	Minimum Curvature
Well Error:	0.0ft	Output errors are at	2.00 sigma
Reference Wellbore	DD	Database:	EDM 2003.21 US Multi Users DB
Reference Design:	Plan #1	Offset TVD Reference:	Offset Datum

Offset Design Sec 19-T3S-R97W - 8814B-19 D30 397 - DD - Plan #1												Offset Site Error:	0.0 ft
Survey Program: 0-MWD												Offset Well Error:	0.0 ft
Reference		Offset		Semi Major Axis			Distance						
Measured Depth (ft)	Vertical Depth (ft)	Measured Depth (ft)	Vertical Depth (ft)	Reference (ft)	Offset (ft)	Highside Toolface (°)	Offset Wellbore Centre +N/-S (ft)	+E/-W (ft)	Between Centres (ft)	Between Ellipses (ft)	Total Uncertainty Axis	Separation Factor	Warning
0.0	0.0	0.0	0.0	0.0	0.0	10.91	8.1	1.6	8.3				
100.0	100.0	100.0	100.0	0.1	0.1	10.91	8.1	1.6	8.3	8.0	0.27	30.310	
200.0	200.0	200.0	200.0	0.3	0.3	10.91	8.1	1.6	8.3	7.6	0.62	13.282 CC, ES	
300.0	300.0	299.7	299.6	0.5	0.5	-120.64	9.2	3.9	11.1	10.1	0.98	11.264 SF	
400.0	399.6	398.9	398.5	0.7	0.7	-121.32	12.3	11.0	19.5	18.1	1.39	13.953	
500.0	498.8	497.2	496.0	1.0	1.0	-121.57	17.5	22.6	33.4	31.5	1.90	17.605	
600.0	597.1	594.1	591.3	1.4	1.3	-121.54	24.6	38.6	52.8	50.2	2.51	21.004	
700.0	694.3	689.8	684.5	1.8	1.7	-121.44	33.5	58.5	77.3	74.1	3.24	23.905	

Cathedral Energy Services

Anticollision Report

Company:	EnCana Oil & Gas (USA) Inc	Local Co-ordinate Reference:	Well 8803D-30 D30 397
Project:	Eureka Unit	TVD Reference:	KB 8803D-30 D30 @ 7362.0ft (Original Well Elev)
Reference Site:	Sec 19-T3S-R97W	MD Reference:	KB 8803D-30 D30 @ 7362.0ft (Original Well Elev)
Site Error:	0.0ft	North Reference:	True
Reference Well:	8803D-30 D30 397	Survey Calculation Method:	Minimum Curvature
Well Error:	0.0ft	Output errors are at	2.00 sigma
Reference Wellbore	DD	Database:	EDM 2003.21 US Multi Users DB
Reference Design:	Plan #1	Offset TVD Reference:	Offset Datum

Offset Design Sec 19-T3S-R97W - 8815D-24 D30 397 - DD - Plan #1												Offset Site Error:	0.0 ft
Survey Program: 0-MWD												Offset Well Error:	0.0 ft
Reference		Offset		Semi Major Axis			Distance						Warning
Measured Depth (ft)	Vertical Depth (ft)	Measured Depth (ft)	Vertical Depth (ft)	Reference (ft)	Offset (ft)	Highside Toolface (°)	Offset Wellbore Centre +N/-S (ft)	+E/-W (ft)	Between Centres (ft)	Between Ellipses (ft)	Total Uncertainty Axis	Separation Factor	
0.0	0.0	0.0	0.0	0.0	0.0	-144.01	-17.2	-12.5	21.3				
100.0	100.0	100.0	100.0	0.1	0.1	-144.01	-17.2	-12.5	21.3	21.0	0.27	78.085	
200.0	200.0	200.0	200.0	0.3	0.3	-144.01	-17.2	-12.5	21.3	20.6	0.62	34.217 CC, ES	
300.0	300.0	299.1	299.1	0.5	0.5	96.82	-17.1	-15.1	23.0	22.0	0.98	23.412 SF	
400.0	399.6	396.9	396.5	0.7	0.7	120.30	-16.8	-22.6	32.3	30.9	1.36	23.704	
500.0	498.8	491.8	490.7	1.0	1.0	136.67	-16.4	-34.7	53.1	51.4	1.73	30.718	
600.0	597.1	582.9	580.3	1.4	1.3	145.06	-15.8	-50.7	84.7	82.6	2.10	40.396	

Cathedral Energy Services

Anticollision Report

Company:	EnCana Oil & Gas (USA) Inc	Local Co-ordinate Reference:	Well 8803D-30 D30 397
Project:	Eureka Unit	TVD Reference:	KB 8803D-30 D30 @ 7362.0ft (Original Well Elev)
Reference Site:	Sec 19-T3S-R97W	MD Reference:	KB 8803D-30 D30 @ 7362.0ft (Original Well Elev)
Site Error:	0.0ft	North Reference:	True
Reference Well:	8803D-30 D30 397	Survey Calculation Method:	Minimum Curvature
Well Error:	0.0ft	Output errors are at	2.00 sigma
Reference Wellbore	DD	Database:	EDM 2003.21 US Multi Users DB
Reference Design:	Plan #1	Offset TVD Reference:	Offset Datum

Reference Depths are relative to KB 8803D-30 D30 @ 7362.0ft (Origin)
Offset Depths are relative to Offset Datum
Central Meridian is 105° 30' 0.00 W °

Coordinates are relative to: 8803D-30 D30 397
Coordinate System is US State Plane 1983, Colorado Central Zone
Grid Convergence at Surface is: -1.79°

