

Encana Oil & Gas (USA) INC.

Well location, EUREKA UNIT #8803D-30 D30 397 (SURFACE LOCATION), located as shown in Lot 4 of Section 19, T3S, R97W, 6th P.M., Rio Blanco County, Colorado.

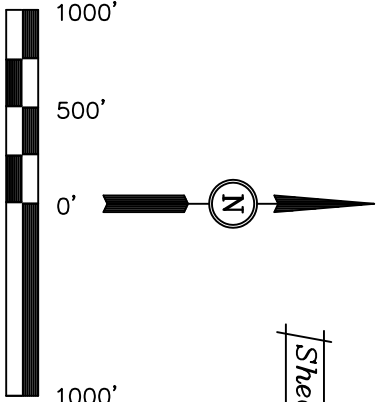
BASIS OF ELEVATION

BENCH MARK (H79) LOCATED IN THE NE 1/4 OF SECTION 35, T4S, R98W, 6th P.M. TAKEN FROM THE BULL FORK QUADRANGLE, COLORADO, 7.5 MINUTE SERIES (TOPO GRAPHICAL MAP) PUBLISHED BY THE UNITED STATES DEPARTMENT OF THE INTERIOR, GEOLOGICAL SURVEY. SAID ELEVATION IS MARKED AS BEING 8535 FEET.

BASIS OF BEARINGS

BASIS OF BEARINGS IS A G.P.S. OBSERVATION.

Sheet 1a of 11



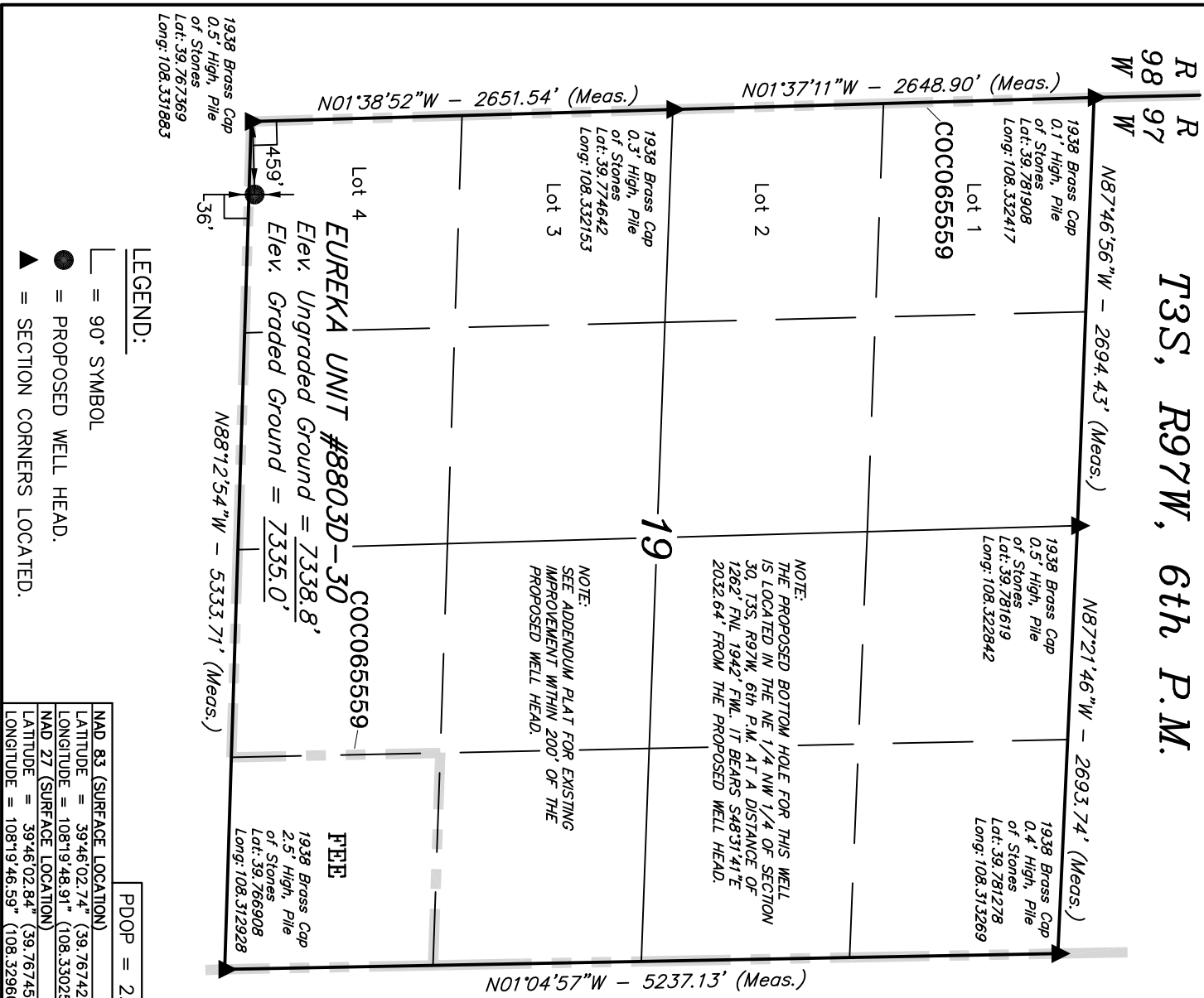
CERTIFICATE

THIS IS TO CERTIFY THAT THE ABOVE PLAT WAS PREPARED FROM FIELD NOTES OF ACTUAL SURVEYS MADE BY ME, OR UNDER MY SUPERVISION AND THAT THE SAME ARE TRUE AND CORRECT TO THE BEST OF MY KNOWLEDGE AND BELIEF.

REGISTERED LAND SURVEYOR  
REGISTRATION NO. 17492  
STATE OF COLORADO

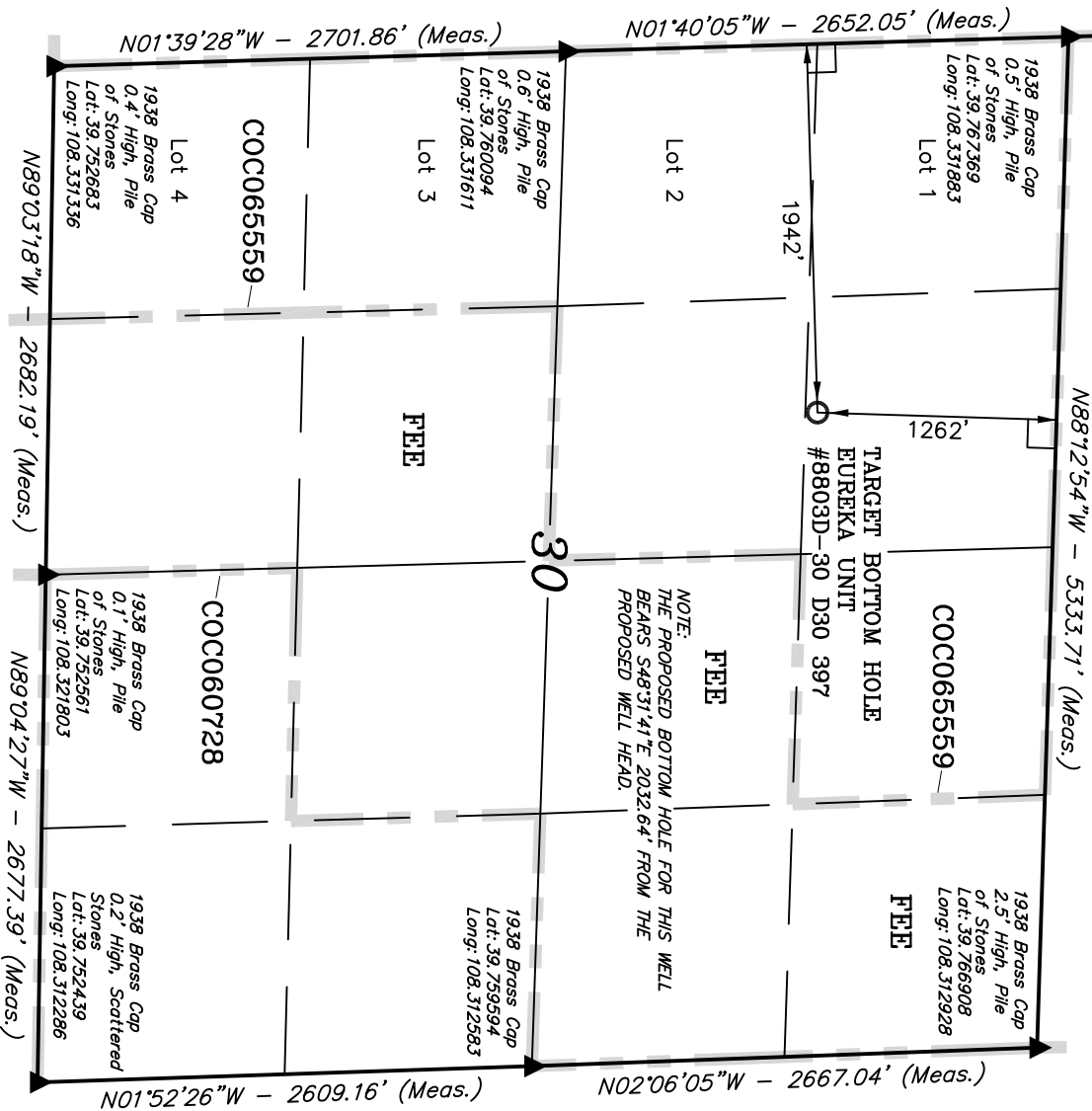
UTAH ENGINEERING & LAND SURVEYING  
85 SOUTH 200 EAST - VERNAL, UTAH 84078  
(435) 789-1017

SCALE		DATE SURVEYED:	DATE DRAWN:
1" = 1000'		01-22-09	01-29-09
PARTY	REFERENCES		
G.O. B.H. D.R.B.	G.L.O. PLAT		
WEATHER	FILE		
COLD	Encana Oil & Gas (USA) INC.		



T3S, R97W, 6th P.M.

R  
98  
W  
R  
97  
W

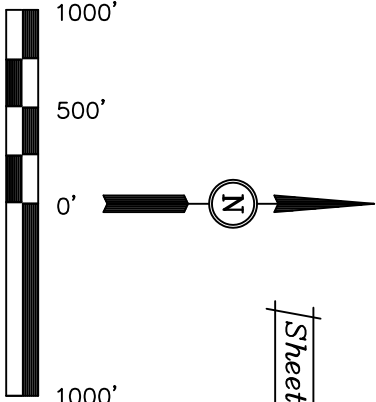


**Encana Oil & Gas (USA) INC.**  
Well location, EUREKA UNIT #8803D-30 D30 397 (TARGET BOTTOM HOLE), located as shown in the NE 1/4 NW 1/4 of Section 30, T3S, R97W, 6th P.M., Rio Blanco County, Colorado.  
BASIS OF ELEVATION

BENCH MARK (H79) LOCATED IN THE NE 1/4 OF SECTION 35, T4S, R98W, 6th P.M. TAKEN FROM THE BULL FORK QUADRANGLE, COLORADO, 7.5 MINUTE SERIES (TOPO GRAPHICAL MAP) PUBLISHED BY THE UNITED STATES DEPARTMENT OF THE INTERIOR, GEOLOGICAL SURVEY. SAID ELEVATION IS MARKED AS BEING 8535 FEET.

BASIS OF BEARINGS  
BASIS OF BEARINGS IS A G.P.S. OBSERVATION.

Sheet 1b of 11



THIS IS TO CERTIFY THAT THE ABOVE PLAT WAS PREPARED FROM FIELD NOTES OF ACTUAL SURVEYS MADE BY ME OR UNDER MY SUPERVISION AND THAT THE SAME ARE TRUE AND CORRECT TO THE BEST OF MY KNOWLEDGE AND BELIEF.

Revised: 03-02-09 D.R.B.

REGISTERED LAND SURVEYOR  
REGISTRATION NO. 17492  
STATE OF COLORADO

**UNTAH ENGINEERING & LAND SURVEYING**  
85 SOUTH 200 EAST - VERNAL, UTAH 84078  
(435) 789-1017

NAD 83 (TARGET BOTTOM HOLE)	
LATITUDE =	39°45'49.44" (39.763733)
LONGITUDE =	108°19'29.42" (108.324839)
NAD 27 (TARGET BOTTOM HOLE)	
LATITUDE =	39°45'49.54" (39.763761)
LONGITUDE =	108°19'27.10" (108.324194)

SCALE	DATE SURVEYED:	DATE DRAWN:
1" = 1000'	01-22-09	01-29-09
PARTY	REFERENCES	
G.O. B.H. D.R.B.	G.L.O. PLAT	
WEATHER	FILE	
COLD	Encana Oil & Gas (USA) INC.	

- LEGEND:
- = 90° SYMBOL
  - = PROPOSED WELL HEAD.
  - ▲ = SECTION CORNERS LOCATED.