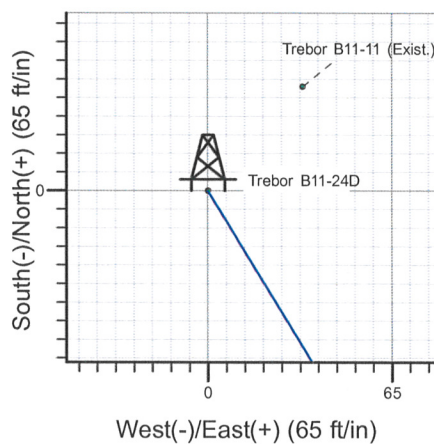
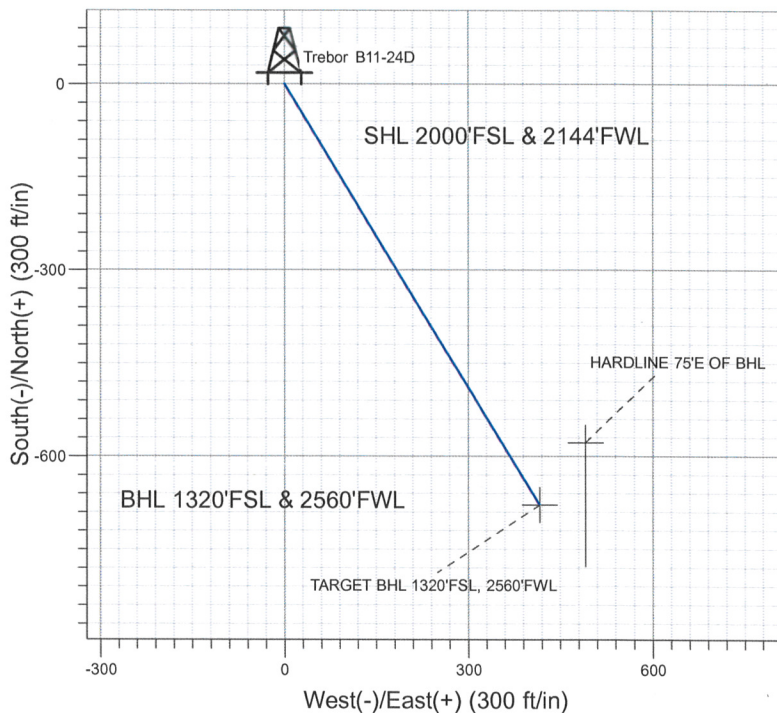
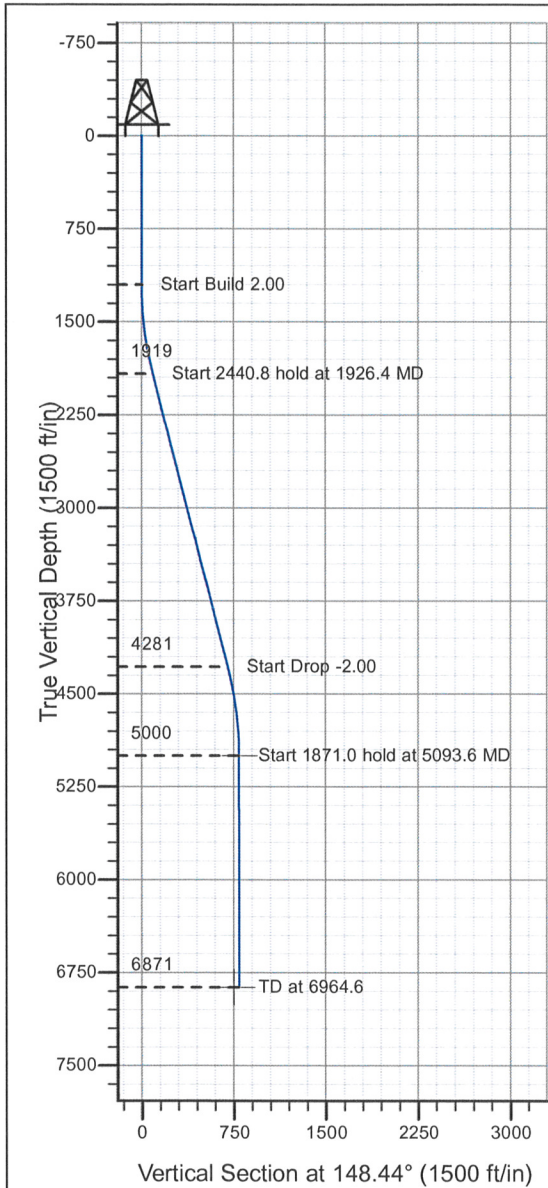


Well Name: Trebor B11-24D

Surface Location: Trebor B11-24D Sec.11-T5N-R64W
 North American Datum 1983 , US State Plane 1983 , Colorado Northern Zone
 Ground Elevation: 4598.0
 +N/-S+E/-W Northing Easting Latitude Longitude Slot
 0.0 0.0 1394434.57 3273064.57 40° 24' 43.128 N 104° 31' 9.696 W
 Original Well Elev WELL @ 4611.0ft (Original Well Elev)

NOBLE ENERGY INC WELD COUNTY CO



Trebor B11-24D Sec.11-T5N-R64W
 Trebor B11-24D
 Plan #1 (07-27-09)
 16:45, July 27 2009



Azimuths to True North
 Magnetic North: 8.95°
 Magnetic Field
 Strength: 53383.0snT
 Dip Angle: 67.17°
 Date: 7/27/2009
 Model: IGRF200510

WELLBORE TARGET DETAILS (LAT/LONG)

Name	TVD	+N/-S	+E/-W	Latitude	Longitude	Shape
TARGET BHL 1320'FSL, 2560'FWL	5000.0	-677.8	416.3	40° 24' 36.430 N	104° 31' 4.314 W	Point
HARDLINE 75'E OF BHL	6871.0	-577.8	491.3	40° 24' 37.418 N	104° 31' 3.345 W	Polygon

SECTION DETAILS

Sec	MD	Inc	Azi	TVD	+N/-S	+E/-W	DLeg	TFace	VSec	Target
1	0.0	0.00	0.00	0.0	0.0	0.0	0.00	0.00	0.0	
2	1200.0	0.00	0.00	1200.0	0.0	0.0	0.00	0.00	0.0	
3	1926.4	14.53	148.44	1918.6	-78.0	47.9	2.00	148.44	91.6	
4	4367.2	14.53	148.44	4281.4	-599.8	368.4	0.00	0.00	703.9	
5	5093.6	0.00	0.00	5000.0	-677.8	416.3	2.00	180.00	795.5	TARGET BHL 1320'FSL, 2560'FWL
6	6964.6	0.00	0.00	6871.0	-677.8	416.3	0.00	0.00	795.5	



Directional

NOBLE ENERGY INC WELD COUNTY CO

SEC.11-T5N-R64W

Trebor B11-24D Sec.11-T5N-R64W

Trebor B11-24D

Wellbore #1

Plan: Plan #1 (07-27-09)

Standard Planning Report

27 July, 2009



Database:	EDM den0-adp01 Server Data	Local Co-ordinate Reference:	Well Trebor B11-24D
Company:	NOBLE ENERGY INC WELD COUNTY CO	TVD Reference:	WELL @ 4611.0ft (Original Well Elev)
Project:	SEC.11-T5N-R64W	MD Reference:	WELL @ 4611.0ft (Original Well Elev)
Site:	Trebor B11-24D Sec.11-T5N-R64W	North Reference:	True
Well:	Trebor B11-24D	Survey Calculation Method:	Minimum Curvature
Wellbore:	Wellbore #1		
Design:	Plan #1 (07-27-09)		

Project	SEC.11-T5N-R64W, Weld County, Colorado		
Map System:	US State Plane 1983	System Datum:	Mean Sea Level
Geo Datum:	North American Datum 1983		
Map Zone:	Colorado Northern Zone		Using geodetic scale factor

Site	Trebor B11-24D Sec.11-T5N-R64W				
Site Position:		Northing:	1,394,434.58 ft	Latitude:	40° 24' 43.128 N
From:	Lat/Long	Easting:	3,273,064.57 ft	Longitude:	104° 31' 9.696 W
Position Uncertainty:	0.0 ft	Slot Radius:	"	Grid Convergence:	0.63 °

Well	Trebor B11-24D					
Well Position	+N/-S	0.0 ft	Northing:	1,394,434.57 ft	Latitude:	40° 24' 43.128 N
	+E/-W	0.0 ft	Easting:	3,273,064.57 ft	Longitude:	104° 31' 9.696 W
Position Uncertainty		0.0 ft	Wellhead Elevation:	ft	Ground Level:	4,598.0 ft

Wellbore	Wellbore #1
-----------------	-------------

Magnetics	Model Name	Sample Date	Declination (°)	Dip Angle (°)	Field Strength (nT)
	IGRF200510	7/27/2009	8.95	67.17	53,383

Design	Plan #1 (07-27-09)
---------------	--------------------

Audit Notes:				
Version:	Phase:	PROTOTYPE	Tie On Depth:	0.0
Vertical Section:	Depth From (TVD) (ft)	+N/-S (ft)	+E/-W (ft)	Direction (°)
	0.0	0.0	0.0	148.44

Plan Sections										
Measured Depth (ft)	Inclination (°)	Azimuth (°)	Vertical Depth (ft)	+N/-S (ft)	+E/-W (ft)	Dogleg Rate (°/100ft)	Build Rate (°/100ft)	Turn Rate (°/100ft)	TFO (°)	Target
0.0	0.00	0.00	0.0	0.0	0.0	0.00	0.00	0.00	0.00	
1,200.0	0.00	0.00	1,200.0	0.0	0.0	0.00	0.00	0.00	0.00	
1,926.4	14.53	148.44	1,918.6	-78.0	47.9	2.00	2.00	0.00	148.44	
4,367.2	14.53	148.44	4,281.4	-599.8	368.4	0.00	0.00	0.00	0.00	
5,093.6	0.00	0.00	5,000.0	-677.8	416.3	2.00	-2.00	0.00	180.00	TARGET BHL 132C
6,964.6	0.00	0.00	6,871.0	-677.8	416.3	0.00	0.00	0.00	0.00	

Database:	EDM den0-adp01 Server Data	Local Co-ordinate Reference:	Well Trebor B11-24D
Company:	NOBLE ENERGY INC WELD COUNTY CO	TVD Reference:	WELL @ 4611.0ft (Original Well Elev)
Project:	SEC.11-T5N-R64W	MD Reference:	WELL @ 4611.0ft (Original Well Elev)
Site:	Trebor B11-24D Sec.11-T5N-R64W	North Reference:	True
Well:	Trebor B11-24D	Survey Calculation Method:	Minimum Curvature
Wellbore:	Wellbore #1		
Design:	Plan #1 (07-27-09)		

Planned Survey

Measured Depth (ft)	Inclination (°)	Azimuth (°)	Vertical Depth (ft)	+N/-S (ft)	+E/-W (ft)	Vertical Section (ft)	Dogleg Rate (°/100ft)	Build Rate (°/100ft)	Turn Rate (°/100ft)
0.0	0.00	0.00	0.0	0.0	0.0	0.0	0.00	0.00	0.00
40.0	0.00	0.00	40.0	0.0	0.0	0.0	0.00	0.00	0.00
80.0	0.00	0.00	80.0	0.0	0.0	0.0	0.00	0.00	0.00
120.0	0.00	0.00	120.0	0.0	0.0	0.0	0.00	0.00	0.00
160.0	0.00	0.00	160.0	0.0	0.0	0.0	0.00	0.00	0.00
200.0	0.00	0.00	200.0	0.0	0.0	0.0	0.00	0.00	0.00
240.0	0.00	0.00	240.0	0.0	0.0	0.0	0.00	0.00	0.00
280.0	0.00	0.00	280.0	0.0	0.0	0.0	0.00	0.00	0.00
320.0	0.00	0.00	320.0	0.0	0.0	0.0	0.00	0.00	0.00
360.0	0.00	0.00	360.0	0.0	0.0	0.0	0.00	0.00	0.00
400.0	0.00	0.00	400.0	0.0	0.0	0.0	0.00	0.00	0.00
440.0	0.00	0.00	440.0	0.0	0.0	0.0	0.00	0.00	0.00
480.0	0.00	0.00	480.0	0.0	0.0	0.0	0.00	0.00	0.00
520.0	0.00	0.00	520.0	0.0	0.0	0.0	0.00	0.00	0.00
560.0	0.00	0.00	560.0	0.0	0.0	0.0	0.00	0.00	0.00
600.0	0.00	0.00	600.0	0.0	0.0	0.0	0.00	0.00	0.00
640.0	0.00	0.00	640.0	0.0	0.0	0.0	0.00	0.00	0.00
680.0	0.00	0.00	680.0	0.0	0.0	0.0	0.00	0.00	0.00
720.0	0.00	0.00	720.0	0.0	0.0	0.0	0.00	0.00	0.00
760.0	0.00	0.00	760.0	0.0	0.0	0.0	0.00	0.00	0.00
800.0	0.00	0.00	800.0	0.0	0.0	0.0	0.00	0.00	0.00
840.0	0.00	0.00	840.0	0.0	0.0	0.0	0.00	0.00	0.00
880.0	0.00	0.00	880.0	0.0	0.0	0.0	0.00	0.00	0.00
920.0	0.00	0.00	920.0	0.0	0.0	0.0	0.00	0.00	0.00
960.0	0.00	0.00	960.0	0.0	0.0	0.0	0.00	0.00	0.00
1,000.0	0.00	0.00	1,000.0	0.0	0.0	0.0	0.00	0.00	0.00
1,040.0	0.00	0.00	1,040.0	0.0	0.0	0.0	0.00	0.00	0.00
1,080.0	0.00	0.00	1,080.0	0.0	0.0	0.0	0.00	0.00	0.00
1,120.0	0.00	0.00	1,120.0	0.0	0.0	0.0	0.00	0.00	0.00
1,160.0	0.00	0.00	1,160.0	0.0	0.0	0.0	0.00	0.00	0.00
1,200.0	0.00	0.00	1,200.0	0.0	0.0	0.0	0.00	0.00	0.00
1,240.0	0.80	148.44	1,240.0	-0.2	0.1	0.3	2.00	2.00	0.00
1,280.0	1.60	148.44	1,280.0	-1.0	0.6	1.1	2.00	2.00	0.00
1,320.0	2.40	148.44	1,320.0	-2.1	1.3	2.5	2.00	2.00	0.00
1,360.0	3.20	148.44	1,359.9	-3.8	2.3	4.5	2.00	2.00	0.00
1,400.0	4.00	148.44	1,399.8	-5.9	3.7	7.0	2.00	2.00	0.00
1,440.0	4.80	148.44	1,439.7	-8.6	5.3	10.0	2.00	2.00	0.00
1,480.0	5.60	148.44	1,479.6	-11.7	7.2	13.7	2.00	2.00	0.00
1,520.0	6.40	148.44	1,519.3	-15.2	9.3	17.9	2.00	2.00	0.00
1,560.0	7.20	148.44	1,559.1	-19.2	11.8	22.6	2.00	2.00	0.00
1,600.0	8.00	148.44	1,598.7	-23.8	14.6	27.9	2.00	2.00	0.00
1,640.0	8.80	148.44	1,638.3	-28.7	17.7	33.7	2.00	2.00	0.00
1,680.0	9.60	148.44	1,677.8	-34.2	21.0	40.1	2.00	2.00	0.00
1,720.0	10.40	148.44	1,717.1	-40.1	24.6	47.1	2.00	2.00	0.00
1,760.0	11.20	148.44	1,756.4	-46.5	28.6	54.6	2.00	2.00	0.00
1,800.0	12.00	148.44	1,795.6	-53.3	32.8	62.6	2.00	2.00	0.00
1,840.0	12.80	148.44	1,834.7	-60.7	37.3	71.2	2.00	2.00	0.00
1,880.0	13.60	148.44	1,873.6	-68.4	42.0	80.3	2.00	2.00	0.00
1,920.0	14.40	148.44	1,912.4	-76.7	47.1	90.0	2.00	2.00	0.00
1,926.4	14.53	148.44	1,918.6	-78.0	47.9	91.6	2.00	2.00	0.00
1,960.0	14.53	148.44	1,951.2	-85.2	52.4	100.0	0.00	0.00	0.00
2,000.0	14.53	148.44	1,989.9	-93.8	57.6	110.1	0.00	0.00	0.00
2,040.0	14.53	148.44	2,028.6	-102.3	62.9	120.1	0.00	0.00	0.00
2,080.0	14.53	148.44	2,067.3	-110.9	68.1	130.1	0.00	0.00	0.00

Database:	EDM den0-adp01 Server Data	Local Co-ordinate Reference:	Well Trebor B11-24D
Company:	NOBLE ENERGY INC WELD COUNTY CO	TVD Reference:	WELL @ 4611.0ft (Original Well Elev)
Project:	SEC.11-T5N-R64W	MD Reference:	WELL @ 4611.0ft (Original Well Elev)
Site:	Trebor B11-24D Sec.11-T5N-R64W	North Reference:	True
Well:	Trebor B11-24D	Survey Calculation Method:	Minimum Curvature
Wellbore:	Wellbore #1		
Design:	Plan #1 (07-27-09)		

Planned Survey

Measured Depth (ft)	Inclination (°)	Azimuth (°)	Vertical Depth (ft)	+N/-S (ft)	+E/-W (ft)	Vertical Section (ft)	Dogleg Rate (°/100ft)	Build Rate (°/100ft)	Turn Rate (°/100ft)
2,120.0	14.53	148.44	2,106.1	-119.4	73.4	140.2	0.00	0.00	0.00
2,160.0	14.53	148.44	2,144.8	-128.0	78.6	150.2	0.00	0.00	0.00
2,200.0	14.53	148.44	2,183.5	-136.5	83.9	160.2	0.00	0.00	0.00
2,240.0	14.53	148.44	2,222.2	-145.1	89.1	170.3	0.00	0.00	0.00
2,280.0	14.53	148.44	2,260.9	-153.6	94.4	180.3	0.00	0.00	0.00
2,320.0	14.53	148.44	2,299.7	-162.2	99.6	190.3	0.00	0.00	0.00
2,360.0	14.53	148.44	2,338.4	-170.7	104.9	200.4	0.00	0.00	0.00
2,400.0	14.53	148.44	2,377.1	-179.3	110.1	210.4	0.00	0.00	0.00
2,440.0	14.53	148.44	2,415.8	-187.8	115.4	220.4	0.00	0.00	0.00
2,480.0	14.53	148.44	2,454.5	-196.4	120.6	230.5	0.00	0.00	0.00
2,520.0	14.53	148.44	2,493.3	-204.9	125.9	240.5	0.00	0.00	0.00
2,560.0	14.53	148.44	2,532.0	-213.5	131.1	250.5	0.00	0.00	0.00
2,600.0	14.53	148.44	2,570.7	-222.0	136.4	260.6	0.00	0.00	0.00
2,640.0	14.53	148.44	2,609.4	-230.6	141.6	270.6	0.00	0.00	0.00
2,680.0	14.53	148.44	2,648.1	-239.1	146.9	280.6	0.00	0.00	0.00
2,720.0	14.53	148.44	2,686.9	-247.7	152.1	290.7	0.00	0.00	0.00
2,760.0	14.53	148.44	2,725.6	-256.2	157.4	300.7	0.00	0.00	0.00
2,800.0	14.53	148.44	2,764.3	-264.8	162.6	310.7	0.00	0.00	0.00
2,840.0	14.53	148.44	2,803.0	-273.3	167.9	320.8	0.00	0.00	0.00
2,880.0	14.53	148.44	2,841.8	-281.9	173.1	330.8	0.00	0.00	0.00
2,920.0	14.53	148.44	2,880.5	-290.4	178.4	340.8	0.00	0.00	0.00
2,960.0	14.53	148.44	2,919.2	-299.0	183.6	350.9	0.00	0.00	0.00
3,000.0	14.53	148.44	2,957.9	-307.5	188.9	360.9	0.00	0.00	0.00
3,040.0	14.53	148.44	2,996.6	-316.1	194.1	370.9	0.00	0.00	0.00
3,080.0	14.53	148.44	3,035.4	-324.6	199.4	381.0	0.00	0.00	0.00
3,120.0	14.53	148.44	3,074.1	-333.2	204.7	391.0	0.00	0.00	0.00
3,160.0	14.53	148.44	3,112.8	-341.7	209.9	401.0	0.00	0.00	0.00
3,200.0	14.53	148.44	3,151.5	-350.3	215.2	411.1	0.00	0.00	0.00
3,240.0	14.53	148.44	3,190.2	-358.8	220.4	421.1	0.00	0.00	0.00
3,280.0	14.53	148.44	3,229.0	-367.4	225.7	431.1	0.00	0.00	0.00
3,320.0	14.53	148.44	3,267.7	-375.9	230.9	441.2	0.00	0.00	0.00
3,360.0	14.53	148.44	3,306.4	-384.5	236.2	451.2	0.00	0.00	0.00
3,400.0	14.53	148.44	3,345.1	-393.0	241.4	461.3	0.00	0.00	0.00
3,440.0	14.53	148.44	3,383.8	-401.6	246.7	471.3	0.00	0.00	0.00
3,480.0	14.53	148.44	3,422.6	-410.1	251.9	481.3	0.00	0.00	0.00
3,520.0	14.53	148.44	3,461.3	-418.7	257.2	491.4	0.00	0.00	0.00
3,560.0	14.53	148.44	3,500.0	-427.2	262.4	501.4	0.00	0.00	0.00
3,600.0	14.53	148.44	3,538.7	-435.8	267.7	511.4	0.00	0.00	0.00
3,640.0	14.53	148.44	3,577.5	-444.3	272.9	521.5	0.00	0.00	0.00
3,680.0	14.53	148.44	3,616.2	-452.9	278.2	531.5	0.00	0.00	0.00
3,720.0	14.53	148.44	3,654.9	-461.4	283.4	541.5	0.00	0.00	0.00
3,760.0	14.53	148.44	3,693.6	-470.0	288.7	551.6	0.00	0.00	0.00
3,800.0	14.53	148.44	3,732.3	-478.5	293.9	561.6	0.00	0.00	0.00
3,840.0	14.53	148.44	3,771.1	-487.1	299.2	571.6	0.00	0.00	0.00
3,880.0	14.53	148.44	3,809.8	-495.6	304.4	581.7	0.00	0.00	0.00
3,920.0	14.53	148.44	3,848.5	-504.2	309.7	591.7	0.00	0.00	0.00
3,960.0	14.53	148.44	3,887.2	-512.7	314.9	601.7	0.00	0.00	0.00
4,000.0	14.53	148.44	3,925.9	-521.3	320.2	611.8	0.00	0.00	0.00
4,040.0	14.53	148.44	3,964.7	-529.8	325.4	621.8	0.00	0.00	0.00
4,080.0	14.53	148.44	4,003.4	-538.4	330.7	631.8	0.00	0.00	0.00
4,120.0	14.53	148.44	4,042.1	-546.9	335.9	641.9	0.00	0.00	0.00
4,160.0	14.53	148.44	4,080.8	-555.5	341.2	651.9	0.00	0.00	0.00
4,200.0	14.53	148.44	4,119.5	-564.0	346.4	661.9	0.00	0.00	0.00
4,240.0	14.53	148.44	4,158.3	-572.6	351.7	672.0	0.00	0.00	0.00

Database:	EDM den0-adp01 Server Data	Local Co-ordinate Reference:	Well Trebor B11-24D
Company:	NOBLE ENERGY INC WELD COUNTY CO	TVD Reference:	WELL @ 4611.0ft (Original Well Elev)
Project:	SEC.11-T5N-R64W	MD Reference:	WELL @ 4611.0ft (Original Well Elev)
Site:	Trebor B11-24D Sec.11-T5N-R64W	North Reference:	True
Well:	Trebor B11-24D	Survey Calculation Method:	Minimum Curvature
Wellbore:	Wellbore #1		
Design:	Plan #1 (07-27-09)		

Planned Survey

Measured Depth (ft)	Inclination (°)	Azimuth (°)	Vertical Depth (ft)	+N/-S (ft)	+E/-W (ft)	Vertical Section (ft)	Dogleg Rate (°/100ft)	Build Rate (°/100ft)	Turn Rate (°/100ft)
4,280.0	14.53	148.44	4,197.0	-581.1	357.0	682.0	0.00	0.00	0.00
4,320.0	14.53	148.44	4,235.7	-589.7	362.2	692.0	0.00	0.00	0.00
4,360.0	14.53	148.44	4,274.4	-598.2	367.5	702.1	0.00	0.00	0.00
4,367.2	14.53	148.44	4,281.4	-599.8	368.4	703.9	0.00	0.00	0.00
4,400.0	13.87	148.44	4,313.2	-606.6	372.6	711.9	2.00	-2.00	0.00
4,440.0	13.07	148.44	4,352.1	-614.6	377.5	721.2	2.00	-2.00	0.00
4,480.0	12.27	148.44	4,391.1	-622.0	382.1	730.0	2.00	-2.00	0.00
4,520.0	11.47	148.44	4,430.3	-629.0	386.4	738.2	2.00	-2.00	0.00
4,560.0	10.67	148.44	4,469.5	-635.6	390.4	745.9	2.00	-2.00	0.00
4,600.0	9.87	148.44	4,508.9	-641.7	394.1	753.0	2.00	-2.00	0.00
4,640.0	9.07	148.44	4,548.3	-647.3	397.6	759.6	2.00	-2.00	0.00
4,680.0	8.27	148.44	4,587.9	-652.4	400.7	765.7	2.00	-2.00	0.00
4,720.0	7.47	148.44	4,627.5	-657.1	403.6	771.1	2.00	-2.00	0.00
4,760.0	6.67	148.44	4,667.2	-661.3	406.2	776.1	2.00	-2.00	0.00
4,800.0	5.87	148.44	4,707.0	-665.0	408.5	780.4	2.00	-2.00	0.00
4,840.0	5.07	148.44	4,746.8	-668.3	410.5	784.2	2.00	-2.00	0.00
4,880.0	4.27	148.44	4,786.6	-671.0	412.2	787.5	2.00	-2.00	0.00
4,920.0	3.47	148.44	4,826.5	-673.3	413.6	790.2	2.00	-2.00	0.00
4,960.0	2.67	148.44	4,866.5	-675.2	414.7	792.3	2.00	-2.00	0.00
5,000.0	1.87	148.44	4,906.5	-676.5	415.5	793.9	2.00	-2.00	0.00
5,040.0	1.07	148.44	4,946.4	-677.4	416.1	795.0	2.00	-2.00	0.00
5,080.0	0.27	148.44	4,986.4	-677.8	416.3	795.4	2.00	-2.00	0.00
5,093.6	0.00	0.00	5,000.0	-677.8	416.3	795.5	2.00	-2.00	0.00
TARGET BHL 1320'FSL, 2560'FWL									
5,120.0	0.00	0.00	5,026.4	-677.8	416.3	795.5	0.00	0.00	0.00
5,160.0	0.00	0.00	5,066.4	-677.8	416.3	795.5	0.00	0.00	0.00
5,200.0	0.00	0.00	5,106.4	-677.8	416.3	795.5	0.00	0.00	0.00
5,240.0	0.00	0.00	5,146.4	-677.8	416.3	795.5	0.00	0.00	0.00
5,280.0	0.00	0.00	5,186.4	-677.8	416.3	795.5	0.00	0.00	0.00
5,320.0	0.00	0.00	5,226.4	-677.8	416.3	795.5	0.00	0.00	0.00
5,360.0	0.00	0.00	5,266.4	-677.8	416.3	795.5	0.00	0.00	0.00
5,400.0	0.00	0.00	5,306.4	-677.8	416.3	795.5	0.00	0.00	0.00
5,440.0	0.00	0.00	5,346.4	-677.8	416.3	795.5	0.00	0.00	0.00
5,480.0	0.00	0.00	5,386.4	-677.8	416.3	795.5	0.00	0.00	0.00
5,520.0	0.00	0.00	5,426.4	-677.8	416.3	795.5	0.00	0.00	0.00
5,560.0	0.00	0.00	5,466.4	-677.8	416.3	795.5	0.00	0.00	0.00
5,600.0	0.00	0.00	5,506.4	-677.8	416.3	795.5	0.00	0.00	0.00
5,640.0	0.00	0.00	5,546.4	-677.8	416.3	795.5	0.00	0.00	0.00
5,680.0	0.00	0.00	5,586.4	-677.8	416.3	795.5	0.00	0.00	0.00
5,720.0	0.00	0.00	5,626.4	-677.8	416.3	795.5	0.00	0.00	0.00
5,760.0	0.00	0.00	5,666.4	-677.8	416.3	795.5	0.00	0.00	0.00
5,800.0	0.00	0.00	5,706.4	-677.8	416.3	795.5	0.00	0.00	0.00
5,840.0	0.00	0.00	5,746.4	-677.8	416.3	795.5	0.00	0.00	0.00
5,880.0	0.00	0.00	5,786.4	-677.8	416.3	795.5	0.00	0.00	0.00
5,920.0	0.00	0.00	5,826.4	-677.8	416.3	795.5	0.00	0.00	0.00
5,960.0	0.00	0.00	5,866.4	-677.8	416.3	795.5	0.00	0.00	0.00
6,000.0	0.00	0.00	5,906.4	-677.8	416.3	795.5	0.00	0.00	0.00
6,040.0	0.00	0.00	5,946.4	-677.8	416.3	795.5	0.00	0.00	0.00
6,080.0	0.00	0.00	5,986.4	-677.8	416.3	795.5	0.00	0.00	0.00
6,120.0	0.00	0.00	6,026.4	-677.8	416.3	795.5	0.00	0.00	0.00
6,160.0	0.00	0.00	6,066.4	-677.8	416.3	795.5	0.00	0.00	0.00
6,200.0	0.00	0.00	6,106.4	-677.8	416.3	795.5	0.00	0.00	0.00
6,240.0	0.00	0.00	6,146.4	-677.8	416.3	795.5	0.00	0.00	0.00

Database:	EDM den0-adp01 Server Data	Local Co-ordinate Reference:	Well Trebor B11-24D
Company:	NOBLE ENERGY INC WELD COUNTY CO	TVD Reference:	WELL @ 4611.0ft (Original Well Elev)
Project:	SEC.11-T5N-R64W	MD Reference:	WELL @ 4611.0ft (Original Well Elev)
Site:	Trebor B11-24D Sec.11-T5N-R64W	North Reference:	True
Well:	Trebor B11-24D	Survey Calculation Method:	Minimum Curvature
Wellbore:	Wellbore #1		
Design:	Plan #1 (07-27-09)		

Planned Survey

Measured Depth (ft)	Inclination (°)	Azimuth (°)	Vertical Depth (ft)	+N/-S (ft)	+E/-W (ft)	Vertical Section (ft)	Dogleg Rate (°/100ft)	Build Rate (°/100ft)	Turn Rate (°/100ft)
6,280.0	0.00	0.00	6,186.4	-677.8	416.3	795.5	0.00	0.00	0.00
6,320.0	0.00	0.00	6,226.4	-677.8	416.3	795.5	0.00	0.00	0.00
6,360.0	0.00	0.00	6,266.4	-677.8	416.3	795.5	0.00	0.00	0.00
6,400.0	0.00	0.00	6,306.4	-677.8	416.3	795.5	0.00	0.00	0.00
6,440.0	0.00	0.00	6,346.4	-677.8	416.3	795.5	0.00	0.00	0.00
6,480.0	0.00	0.00	6,386.4	-677.8	416.3	795.5	0.00	0.00	0.00
6,519.6	0.00	0.00	6,426.0	-677.8	416.3	795.5	0.00	0.00	0.00
NIOBRARA									
6,520.0	0.00	0.00	6,426.4	-677.8	416.3	795.5	0.00	0.00	0.00
6,560.0	0.00	0.00	6,466.4	-677.8	416.3	795.5	0.00	0.00	0.00
6,600.0	0.00	0.00	6,506.4	-677.8	416.3	795.5	0.00	0.00	0.00
6,640.0	0.00	0.00	6,546.4	-677.8	416.3	795.5	0.00	0.00	0.00
6,680.0	0.00	0.00	6,586.4	-677.8	416.3	795.5	0.00	0.00	0.00
6,720.0	0.00	0.00	6,626.4	-677.8	416.3	795.5	0.00	0.00	0.00
6,760.0	0.00	0.00	6,666.4	-677.8	416.3	795.5	0.00	0.00	0.00
6,800.0	0.00	0.00	6,706.4	-677.8	416.3	795.5	0.00	0.00	0.00
6,814.6	0.00	0.00	6,721.0	-677.8	416.3	795.5	0.00	0.00	0.00
CODELL									
6,840.0	0.00	0.00	6,746.4	-677.8	416.3	795.5	0.00	0.00	0.00
6,880.0	0.00	0.00	6,786.4	-677.8	416.3	795.5	0.00	0.00	0.00
6,920.0	0.00	0.00	6,826.4	-677.8	416.3	795.5	0.00	0.00	0.00
6,960.0	0.00	0.00	6,866.4	-677.8	416.3	795.5	0.00	0.00	0.00
6,964.6	0.00	0.00	6,871.0	-677.8	416.3	795.5	0.00	0.00	0.00
HARDLINE 75°E OF BHL									

Targets

Target Name	Dip Angle (°)	Dip Dir. (°)	TVD (ft)	+N/-S (ft)	+E/-W (ft)	Northing (ft)	Easting (ft)	Latitude	Longitude
- hit/miss target									
- Shape									
HARDLINE 75°E OF E	0.00	0.00	6,871.0	-577.8	491.3	1,393,862.26	3,273,562.21	40° 24' 37.418 N	104° 31' 3.345 W
- plan misses target center by 125.0ft at 6964.6ft MD (6871.0 TVD, -677.8 N, 416.3 E)									
- Polygon									
Point 1			6,871.0	0.0	0.0	1,393,862.26	3,273,562.21		
Point 2			6,871.0	-200.0	0.0	1,393,662.28	3,273,564.42		
TARGET BHL 1320°F	0.00	0.00	5,000.0	-677.8	416.3	1,393,761.44	3,273,488.36	40° 24' 36.430 N	104° 31' 4.314 W
- plan hits target center									
- Point									

Formations

Measured Depth (ft)	Vertical Depth (ft)	Name	Lithology	Dip (°)	Dip Direction (°)
6,519.6	6,426.0	NIOBRARA		0.00	
6,814.6	6,721.0	CODELL		0.00	