

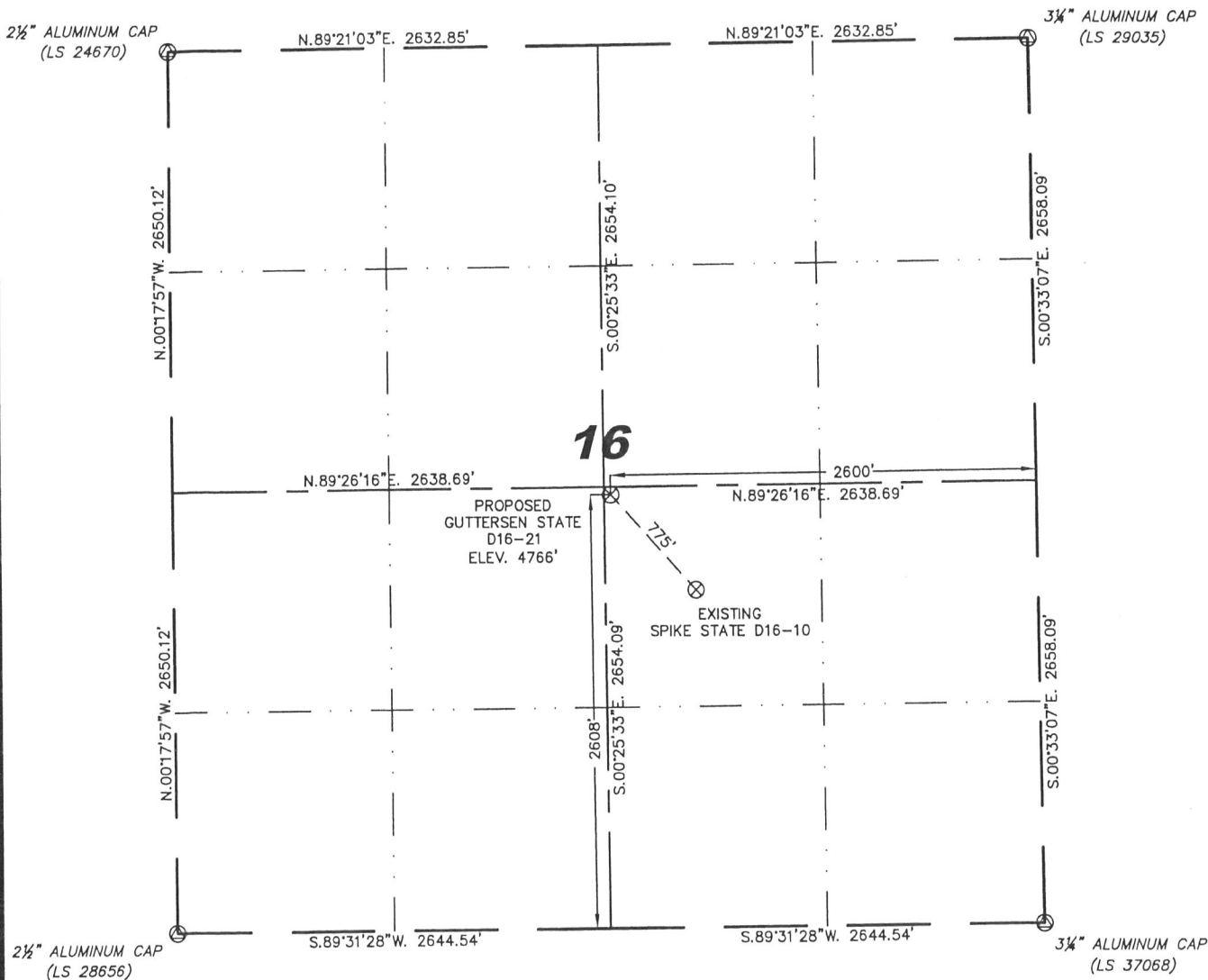
Steil Surveying Services, LLC

1102 West 19th Street P.O. BOX 2073

Cheyenne, Wyoming 82009

WELL LOCATION CERTIFICATE
THIS MAP DOES NOT REPRESENT A BOUNDARY SURVEY

SECTION 16
TOWNSHIP 3 NORTH
RANGE 64 WEST



0 1000

Scale: 1" = 1000'

IN ACCORDANCE WITH A REQUEST FROM ERIK VAN DECAR - NOBLE ENERGY INC, STEIL SURVEYING SERVICES, LLC HAS DETERMINED THE LOCATION OF THE GUTTERSEN STATE D16-21 WELL TO BE 2608' FSL, 2600' FEL, AS MEASURED AT NINETY (90) DEGREES FROM THE SECTION LINES, SECTION 16, TOWNSHIP 3 NORTH, RANGE 64 WEST, 6TH PRINCIPLE MERIDIAN, WELD COUNTY, COLORADO.

I HEREBY CERTIFY THAT THIS WELL LOCATION CERTIFICATE WAS PREPARED BY ME, OR UNDER MY DIRECT SUPERVISION, THAT THE FIELD WORK WAS COMPLETED ON 05/05/2009, FOR AND ON BEHALF OF NOBLE ENERGY INC, THAT IT IS NOT A LAND SURVEY PLAT OR AN IMPROVEMENT SURVEY PLAT, AND THAT IT IS NOT TO BE RELIED UPON FOR ESTABLISHMENT OF FENCE, BUILDING, OR OTHER FUTURE IMPROVEMENT LINES.

NOTES:

- 1) BASIS OF BEARINGS FOR THIS MAP ARE BASED UPON GPS OBSERVATIONS MADE ON 04/29/2009 BETWEEN MONUMENTS LOCATED AT THE SOUTHEAST SECTION CORNER AND THE NORTHEAST SECTION CORNER OF SAID SECTION AND WITH ALL BEARINGS SHOWN HEREON RELATIVE THERETO.
- 2) ELEVATIONS ARE BASED UPON NGS OPUS SOLUTION NAVD 88 DATUM.
- 3) THE NEAREST EXISTING WELL IS: SPIKE STATE D16-10, 775' SOUTHEAST.
- 4) SEE VISIBLE IMPROVEMENTS EXHIBIT FOR ALL IMPROVEMENTS WITHIN 400'.
- 5) THE LOCATION FALLS IN PASTURE LAND.

LATITUDE & LONGITUDE (NAD 83 SURFACE HOLE):

LATITUDE: N 40.22527°
LONGITUDE: W 104.55602°
PDOP: 2.2
QUARTER-QUARTER: NW/4SE/4
NEAREST PROPERTY LINE: 2600' TO THE EAST

LEGEND

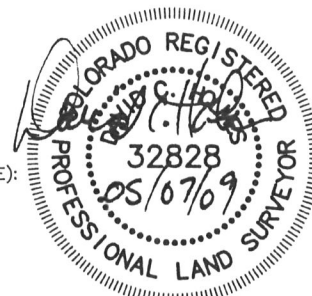
- ⊙ FOUND SURVEY MONUMENT PER MONUMENT RECORD - EXCEPTIONS NOTED.
- (C) CALCULATED DIMENSION

NOTICE: According to Colorado law you MUST commence any legal action based upon any defect in this W.L.C. within three years after you first discover such defect. In no event may any action based upon any defect in this W.L.C. be commenced more than ten years from this sold date of the certification shown hereon.

David C. Holmes
Professional Land Surveyor Registration No. 32828
State of Colorado

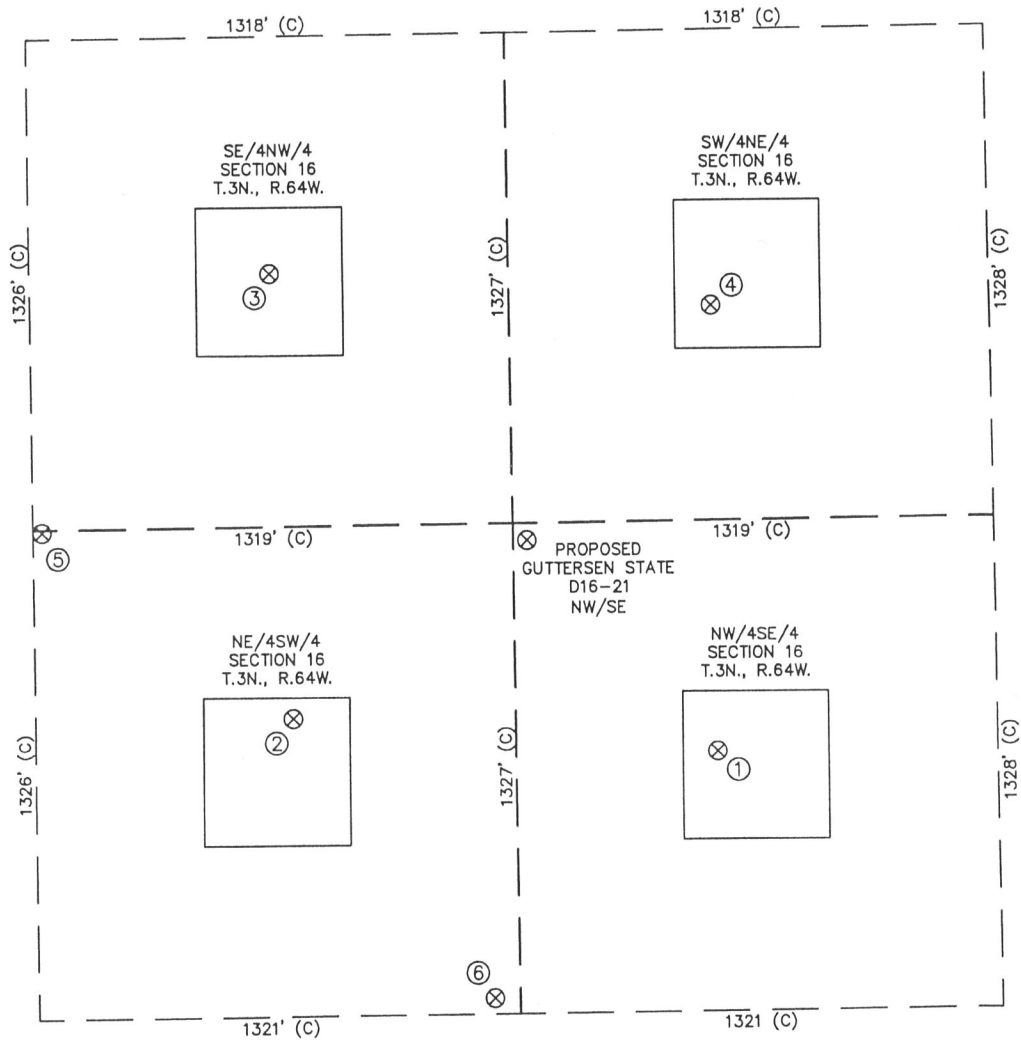
JOB #: 09086

Completed 05/06/2009



SITE SKETCH - GUTTERSEN STATE D16-21

SECTION 16
TOWNSHIP 3 NORTH
RANGE 64 WEST



①	②	③	④	⑤	⑥
SPIKE STATE D16-10 NW/SE SEC. 16 2030' FSL 2085' FEL EL 4771' N 40.22368 W 104.55417 PDOP 2.0	SPIKE STATE D16-11 NE/SW SEC. 16 2133' FSL 2026' FWL EL 4771' N 40.22397 W 104.55836 PDOP 2.3	SPIKE STATE D16-6 SE/NW SEC. 16 1968' FNL 1978' FWL EL 4754' N 40.22728 W 104.55851 PDOP 2.0	DIGGIN STATE D16-7 SW/NE SEC. 16 2074' FNL 2079' FEL EL 4773' N 40.22699 W 104.55415 PDOP 2.0	GUTTERSEN D16-20 SE/NW SEC. 16 2559' FNL 1344' FWL EL 4757' N 40.22538 W 104.56079 PDOP 1.7	GUTTERSEN STATE D16-24 NE/SW SEC. 16 1370' FSL 2571' FWL EL 4790' N 40.22188 W 104.55642 PDOP 2.1

NOTES:

- THIS SKETCH DOES NOT REPRESENT A BOUNDARY SURVEY.
- THE DATUM FOR THE LATITUDES AND LONGITUDES ON THIS SKETCH IS NAD83.

