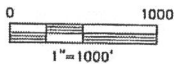
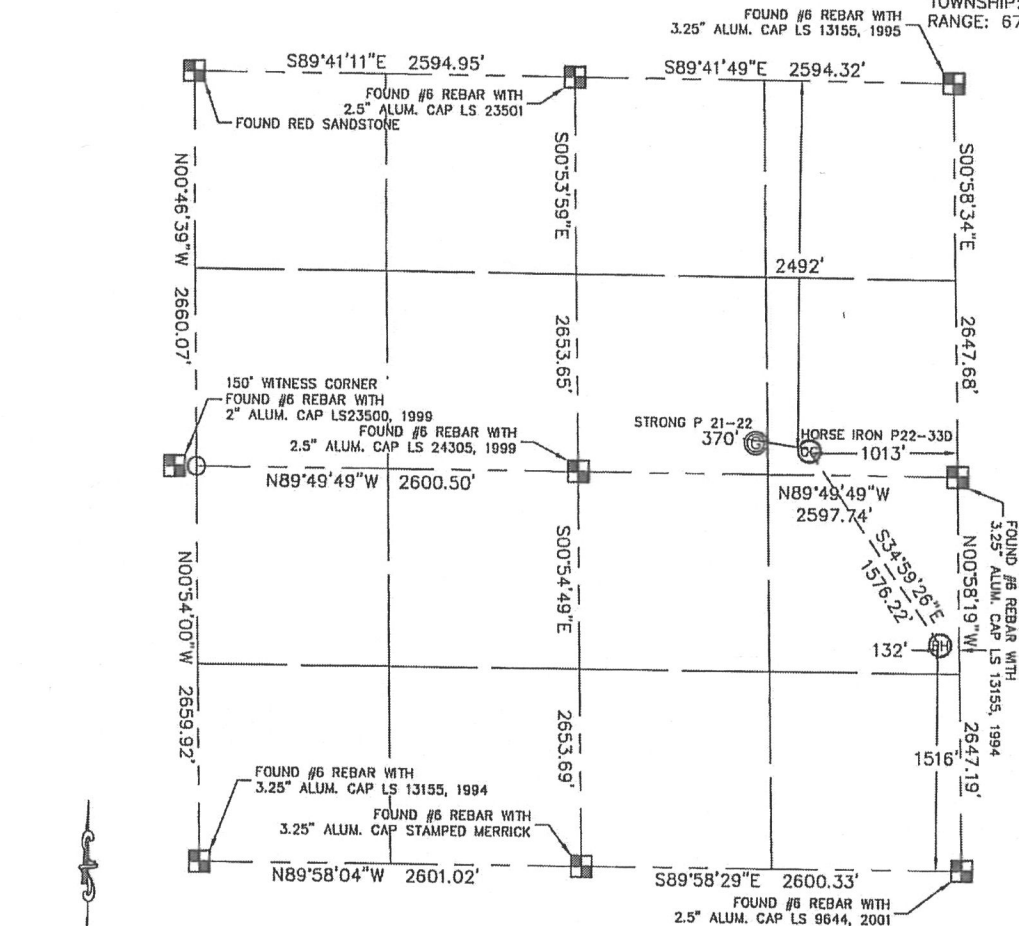


KING SURVEYORS, INC. 650 E. GARDEN DR. WINDSOR, CO 80550

WELL LOCATION CERTIFICATE

THIS MAP DOES NOT REPRESENT A BOUNDARY SURVEY

SECTION: 21
TOWNSHIP: 3N
RANGE: 67W



In accordance with a request from Rager Lowe with Noble Energy Inc., King Surveyors Inc. has determined the surface location of the Horse Iron P22-330 to be 2492' from the North line and 1013' from the East line and the bottom hole location to be 1516' from the SOUTH line and 132' from the EAST line as measured at right angles from the section line of Section 21, Township 3 North, Range 67 West of the Sixth Principal Meridian, County of Weld, State of Colorado.

I hereby state that this Well Location Certificate was prepared by me, or under my direct supervision, that the fieldwork was completed on 3-5-09, for and on behalf of Noble Energy Inc. That this is not a Land Survey Plat or an Improvement Survey Plat, and that it is not to be relied upon for establishment of fence, building, or other future improvement lines.

NOTE:

- 1) Bearings shown are Grid Bearings of the Colorado State Plane Coordinate System, North Zone, North American Datum 1983/2007. The lineal dimensions as contained herein are based upon the "U.S. Survey Foot."
- 2) Ground elevations are based on an observed GPS elevation (NAVD 1988 DATUM).
- 3) NEAREST EXISTING WELL: STRONG P21-22 370' WEST
- 4) IMPROVEMENTS: See VISIBLE IMPROVEMENTS exhibit for all visible improvements within 400' of well head.
- 5) SURFACE USE: PASTURE, GRAIN STORAGE, OIL/GAS PRODUCTION EQUIPMENT

SURFACE LOCATION
LATITUDE: 40.21167°N
LONGITUDE: 104.88964°W
PDOP: 2.3
ELEV: 4790
1/4, 1/4: SE 1/4 NE 1/4
NEAREST PROPERTY LINE: 210' WEST

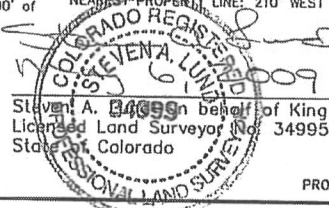
BOTTOM HOLE
LATITUDE: 40.20804°N
LONGITUDE: 104.88637°W

NOTE

According to Colorado law, you must commence any legal action based upon any defect in this W.L.C. within three years after you discover such defect. In no event, may any action based upon any defect in this survey be commenced more than ten years after the date of the certificate shown hereon. (13-80-105 C.R.S.)

LEGEND

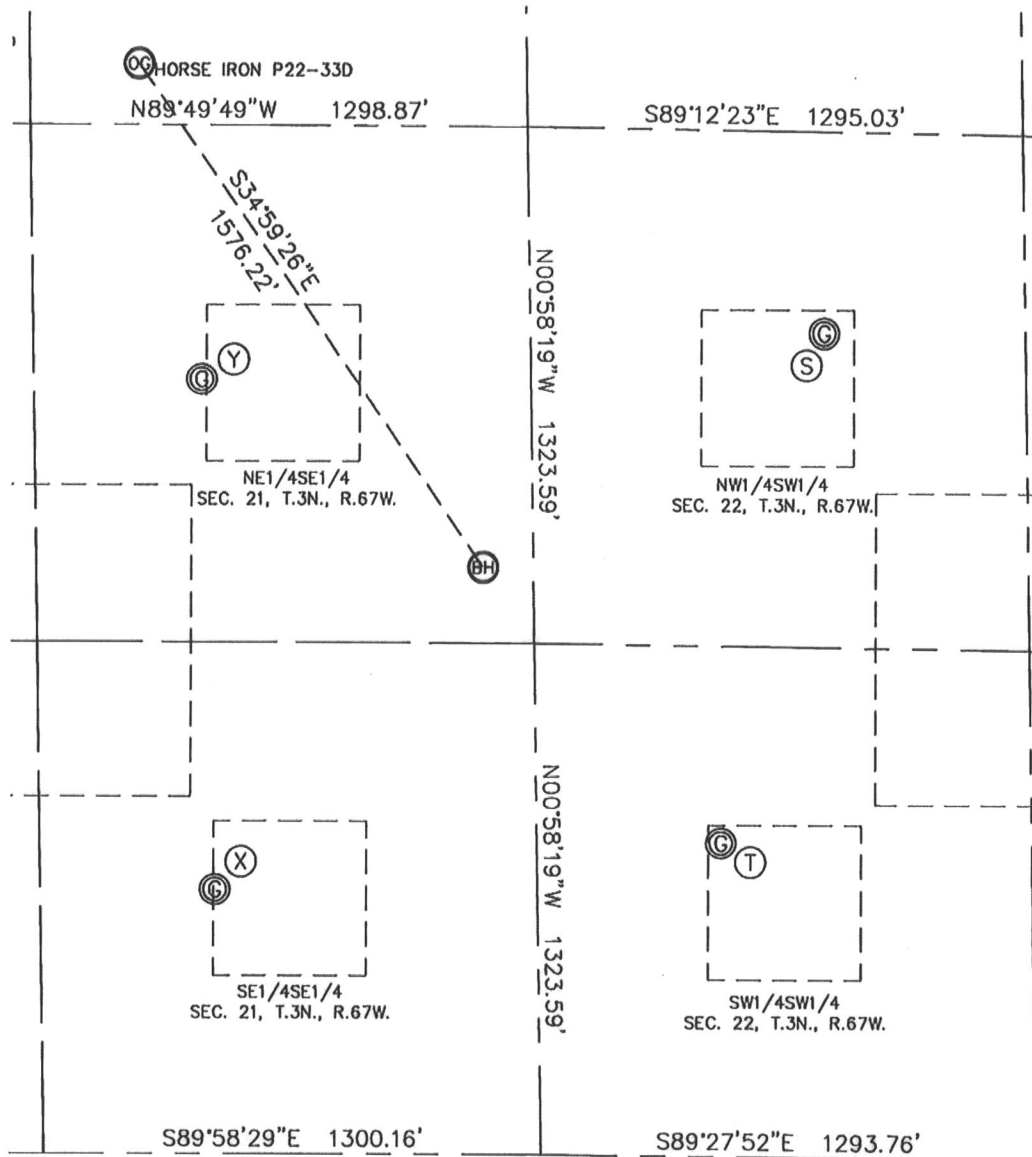
- = ALIQUOT MONUMENT AS DESCRIBED
- = CALCULATED POSITION



PROJECT#: 2009035

KING SURVEYORS, INC. 650 E. GARDEN DR. WINDSOR, CO 80550
SITE SKETCH

SECTION: 21
 TOWNSHIP: 3N
 RANGE: 67W



(S)
 MAYER 22-12L
 NW1/4SW1/4
 2125' FSL
 772' FWL
 LAT-40.20975'N
 LONG-104.88322'W
 PDOP: 1.7
 ELEV: 4806

(T)
 MAYER 22-13L
 SW1/4SW1/4
 813' FSL
 482' FWL
 LAT-40.20616'N
 LONG-104.88421'W
 PDOP: 1.7
 ELEV: 4808

(X)
 STRONG P 21-16
 SE1/4SE1/4
 684' FSL
 845' FEL
 LAT-40.20584'N
 LONG-104.88896'W
 PDOP: 1.8
 ELEV: 4794

(Y)
 STRONG P 21-9
 NE1/4SE1/4
 1998' FSL
 862' FEL
 LAT-40.20945'N
 LONG-104.88906'W
 PDOP: 2.0
 ELEV: 4791

