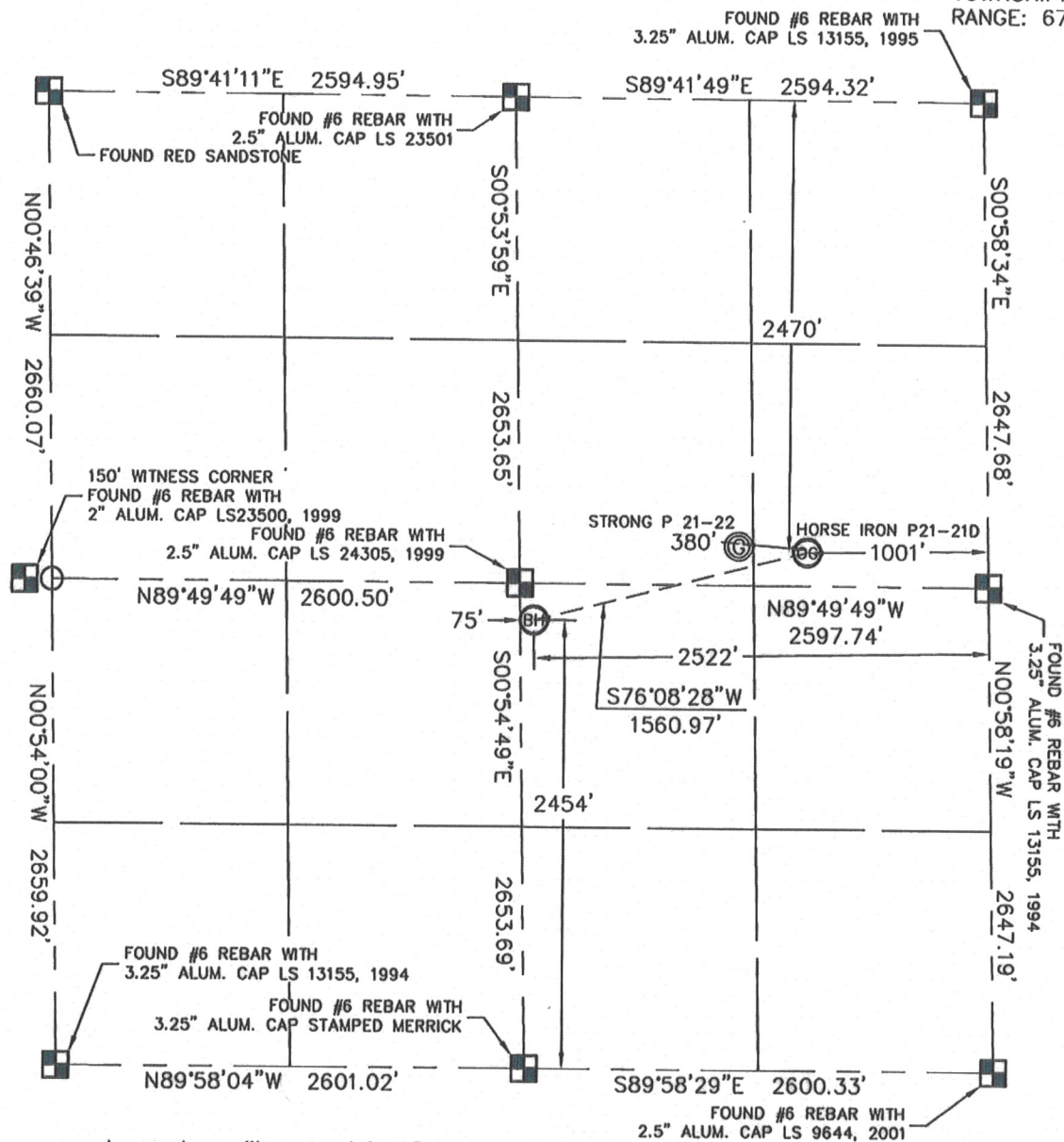


# WELL LOCATION CERTIFICATE

THIS MAP DOES NOT REPRESENT A BOUNDARY SURVEY

SECTION: 21  
TOWNSHIP: 3N  
RANGE: 67W



In accordance with a request from Roger Lowe with Noble Energy Inc., King Surveyors Inc. has determined the surface location of the Horse Iron P21-21D to be 2470' from the North line and 1001' from the East line and the bottom hole location to be 2454' from the SOUTH line and 2522' from the EAST line as measured at right angles from the section line of Section 21, Township 3 North, Range 67 West of the Sixth Principal Meridian, County of Weld, State of Colorado.

I hereby state that this Well Location Certificate was prepared by me, or under my direct supervision, that the fieldwork was completed on 3-5-09, for and on behalf of Noble Energy Inc.. That this is not a Land Survey Plat or an Improvement Survey Plat, and that it is not to be relied upon for establishment of fence, building, or other future improvement lines.

**NOTE:**

- 1) Bearings shown are Grid Bearings of the Colorado State Plane Coordinate System, North Zone, North American Datum 1983/2007. The lineal dimensions as contained herein are based upon the "U.S. Survey Foot."  
2) Ground elevations are based on an observed GPS elevation (NAVD 1988 DATUM).  
3) NEAREST EXISTING WELL: STRONG P21-22 380' WEST  
4) IMPROVEMENTS: See VISIBLE IMPROVEMENTS exhibit for all visible improvements within 400' of well head.  
5) SURFACE USE: PASTURE, GRAIN STORAGE, OIL/GAS PRODUCTION EQUIPMENT

SURFACE LOCATION  
LATITUDE: 40.21173°N  
LONGITUDE: 104.88959°W  
PDOP: 2.3  
ELEV: 4789



1/4, 1/4: SE1/4NE1/4  
NEAREST PROPERTY LINE: 222' WEST

BOTTOM HOLE  
LATITUDE: 40.21073°N  
LONGITUDE: 104.89503°W

### NOTE

According to Colorado law, you must commence any legal action based upon any defect in this W.L.C. within three years after you discover such defect. In no event, may any action based upon any defect in this survey be commenced more than ten years after the date of the certificate shown hereon. (13-80-105 C.R.S.)

### LEGEND

-  = ALIQUOT MONUMENT AS DESCRIBED  
 = CALCULATED POSITION

Steven A. 34995 on behalf of King Surveyors, Inc.  
Licensed Land Surveyor, No. 34995  
State of Colorado

PROJECT#: 2009035

WINDSOR, CO 80550

