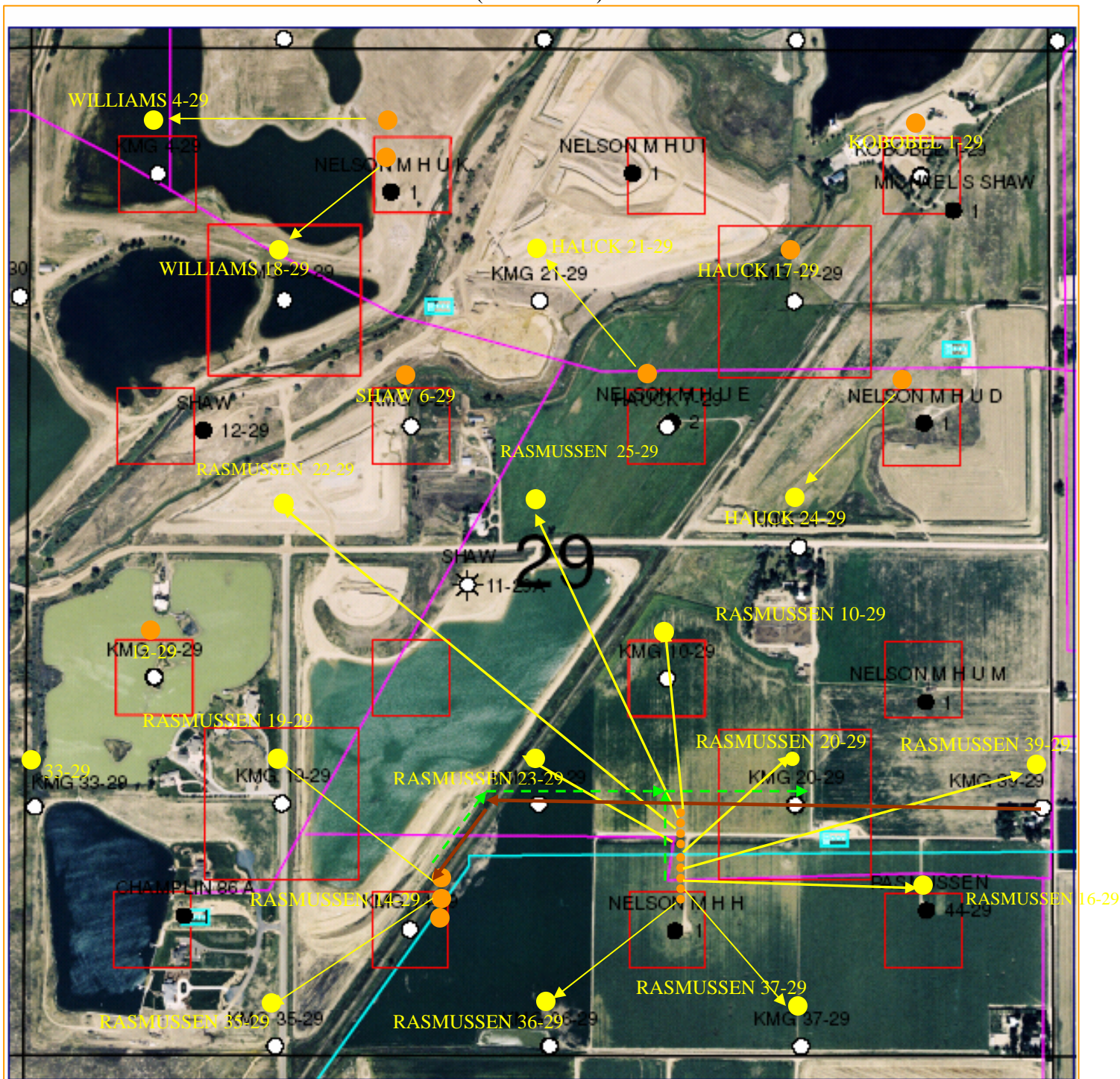


ACCESS ROAD (2007 Aerial)



- Access Road
- KMG Gathering Pipeline
- Duke Pipeline
- RGS1
- - - Proposed Flowline
- Legal Drilling Window
- Battery Location

KerrMcGee Oil & Gas Onshore LP		
AERIAL PHOTO Sec. 29-T2N-R60W Weld County, Colorado		
Author: Tadley Rumpert	Control: 03/15/10 06	Printed: 11 August, 10 06
Project: 08-01 Basin Land	Scale: 1" = 100'	File: Aerial/080809.gsp