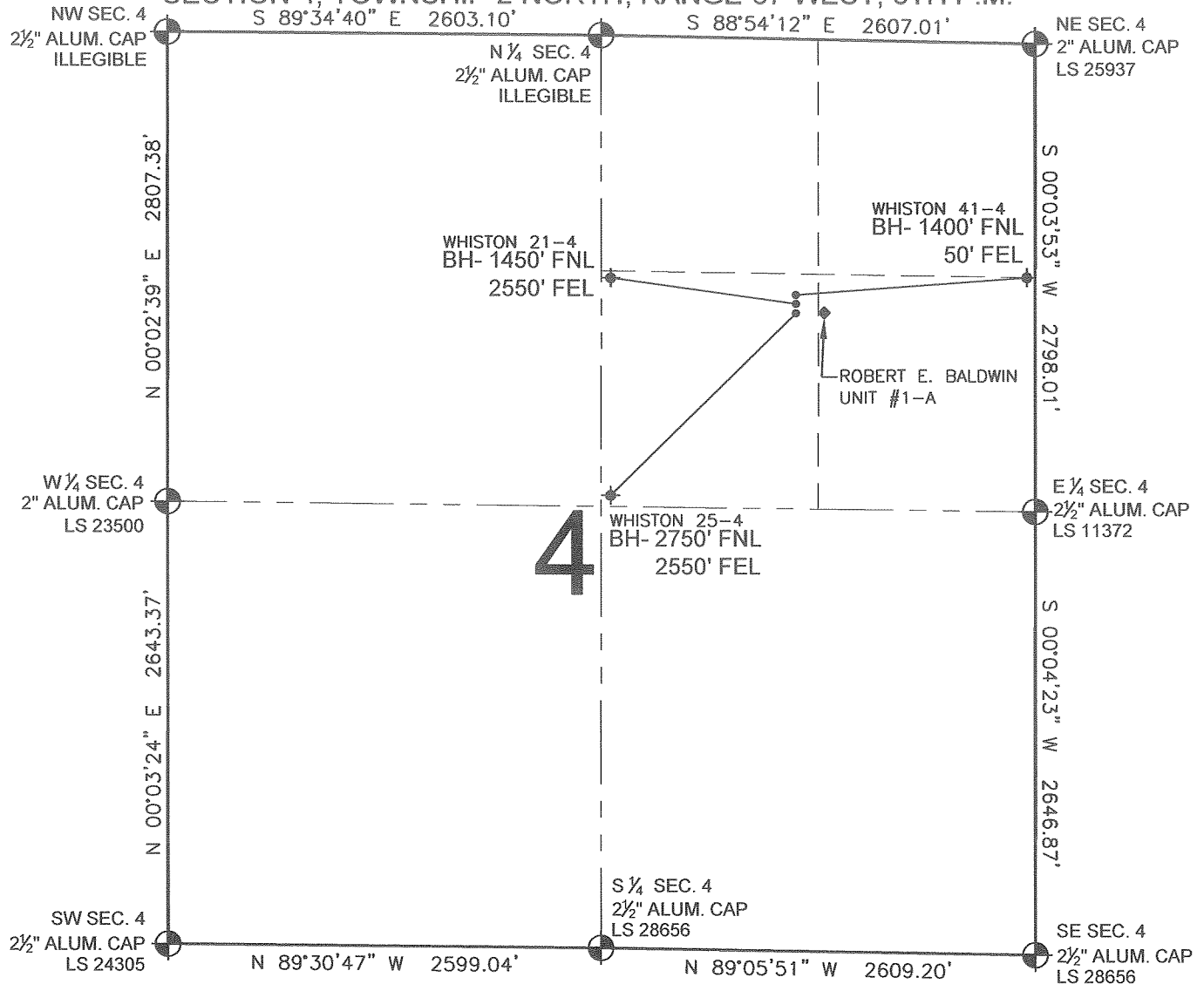


PAD DRAWING - WHISTON 3 PAD

SECTION 4, TOWNSHIP 2 NORTH, RANGE 67 WEST, 6TH P.M.



NOTES:

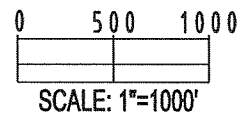
- THIS SURVEY WAS DONE BY GPS METHODS AND CONFORMS TO THE MINIMUM STANDARDS SET BY THE C.O.G.C.C., RULE NO. 215
- ELEVATIONS SHOWN AT THE WELL HEAD, AS WELL AS HORIZONTAL CONTROL, ARE BASED ON GPS-RTK VALUES DERIVED FROM DOING 2-HOUR STATIC GPS SESSIONS AND REDUCTIONS USING O.P.U.S. SOLUTIONS.
VERTICAL = NAVD88; HORIZONTAL = NAD83/92
- THE BEARINGS SHOWN HEREON ARE BASED ON GPS OBSERVATIONS BETWEEN THE MONUMENTS SHOWN HEREON AS FOUND ON THE FIELD DATE BELOW.
- DISTANCES SHOWN ARE AT GROUND LEVEL, AS MEASURED IN THE FIELD, WITH TIES TO WELLS MEASURED AT A PERPENDICULAR TO SECTION LINES.

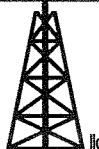
LEGEND

- = EXISTING MONUMENT
 = BOTTOM HOLE
 BH= BOTTOM HOLE
 = PROPOSED WELL
 = EXISTING WELL

NOTES:

WHISTON 41-4 TO BE AT 1579' FNL, 1437' FEL.
 BOTTOM HOLE AT 1400' FNL & 50' FEL.
 WHISTON 21-4 TO BE AT 1609' FNL, 1437' FEL.
 BOTTOM HOLE AT 1450' FNL & 2550' FEL.
 WHISTON 25-4 TO BE AT 1639' FNL, 1437' FEL.
 BOTTOM HOLE AT 2750' FNL & 2550' FEL.
 ROBERT E. BALDWIN UNIT #1-A IS 1639' FNL, 1388' FEL.



REVISIONS		PREPARED BY:	 Petroleum Field Services, LLC 1801 W. 13th Ave. Denver, CO 80204
INITIAL	DATE		

KERR-MCGEE OIL & GAS ONSHORE LP

FIELD DATE:
08-10-09

DRAWING DATE:
08-11-09

BY:
SMF

PAD NAME:

WHISTON 3 PAD

SURFACE LOCATION:

WELD COUNTY, COLORADO
SW 1/4 NE 1/4, SEC. 4, T2N, R67W