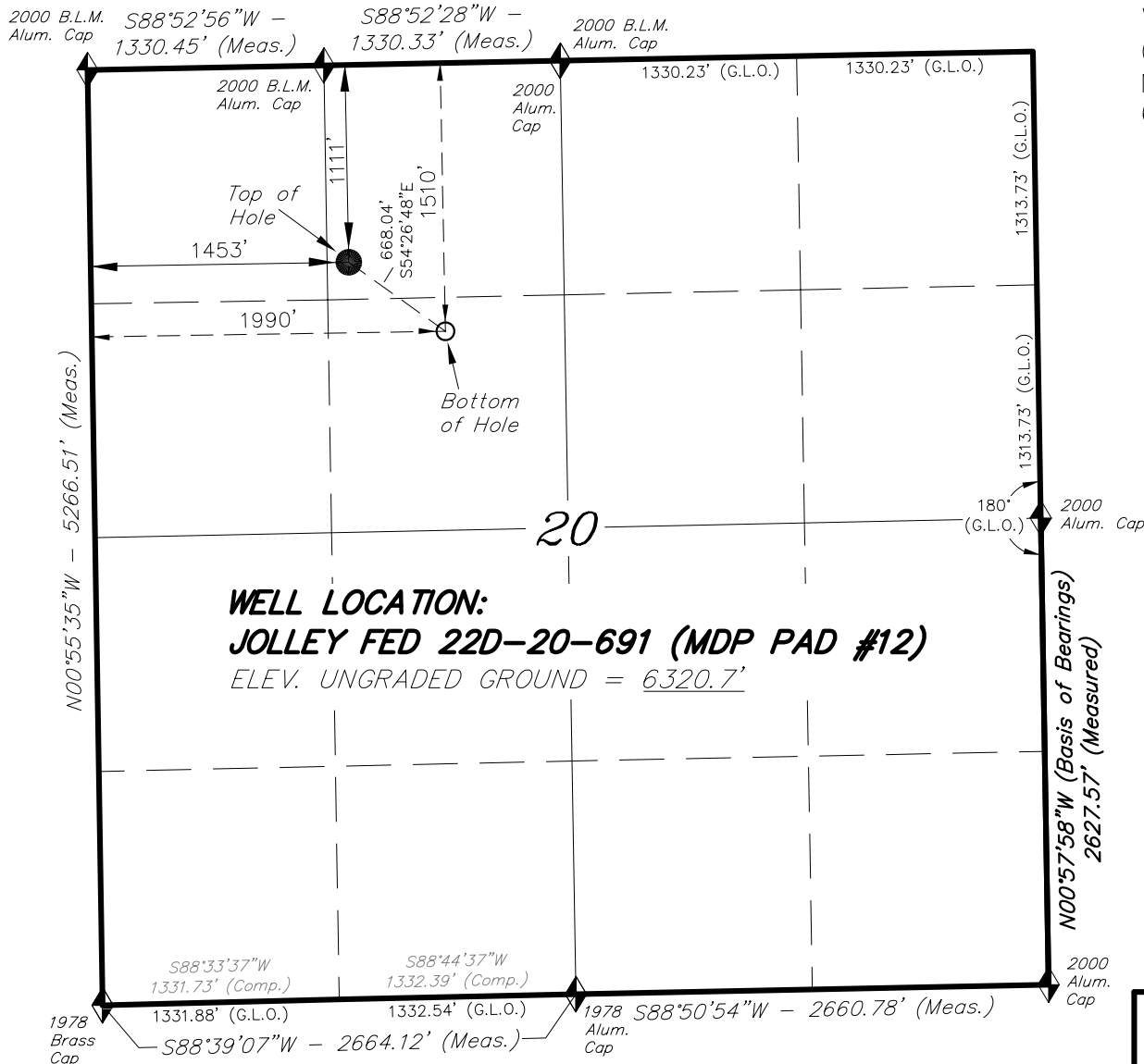


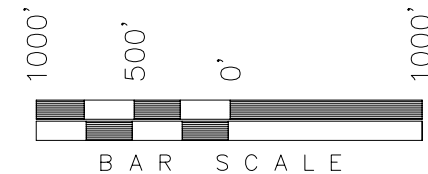
*BILL BARRETT CORP.*



 = SECTION CORNERS LOCATED

LATITUDE	= 39°31'02.72"
	(39.517421)
LONGITUDE	= 107°34'57.07"
	(107.582519)

WELL LOCATION, JOLLEY FED 22D-20-691  
(MDP PAD #12), LOCATED AS SHOWN IN THE  
NE 1/4 NW 1/4 OF SECTION 20, T6S, R91W,  
6th P.M. GARFIELD COUNTY, COLORADO.



1. Well footages are measured at right angles to the Section Lines.
2. Bearings are based on Global Positioning Satellite observations.
3. G.P.S. Operator: D. Slauch, (PDOP) = 2.0

See addendum to legal plat (sheet 2q)  
for existing improvements within 400'  
of the proposed well head.

THIS IS TO CERTIFY THAT THE ABOVE PLAT WAS  
PREPARED FROM FIELD NOTES OF A SURVEY  
MADE BY ME OR UNDER MY SUPERVISION. THE LOCATION  
HAS BEEN STAKED ON THE GROUND AND THE PLAT, AND THAT THE SAME  
WILL BE THE SAME AS THE PLAT ON FILE IN THE OFFICE OF THE  
COUNTY CLERK TO THE BEST OF MY KNOWLEDGE AND BELIEF.

REGISTERED LAND SURVEYOR  
REGISTRATION NUMBER 30125  
STATE OF COLORADO

**TRI STATE LAND SURVEYING & CONSULTING**  
180 NORTH VERNAL AVE. — VERNAL, UTAH 84078  
(435) 781-2501

DATE SURVEYED: 08-27-09	SURVEYED BY: C.D.S.	<b>SHEET</b> <b>2a</b> <b>OF 12</b>
DATE DRAWN: 08-28-09	DRAWN BY: L.C.S.	
REVISED:	SCALE: 1" = 1000'	