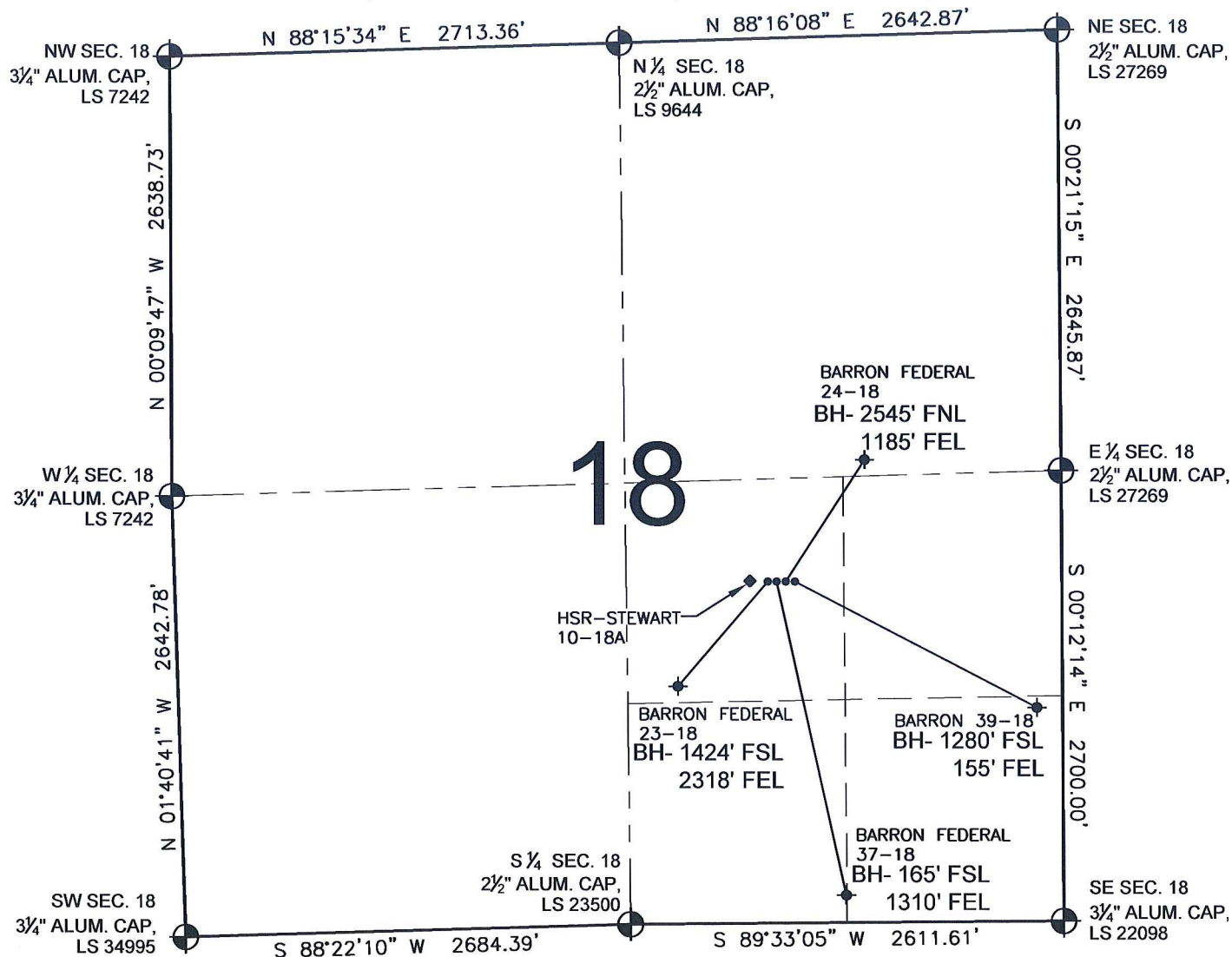


PAD DRAWING - BARRON 4 PAD

SECTION 18, TOWNSHIP 3 NORTH, RANGE 66 WEST, 6TH P.M.



NOTES:

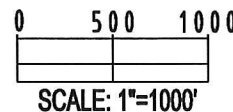
- THIS SURVEY WAS DONE BY GPS METHODS AND CONFORMS TO THE MINIMUM STANDARDS SET BY THE C.O.G.C.C., RULE NO. 215 (PDOP VALUE IS LESS THAN 6.0, LATITUDE AND LONGITUDE ARE ACCURATE TO 5 DECIMAL PLACES, AND GPS OBSERVATIONS ARE DIFFERENTIAL AND DONE BY QUALIFIED PERSONNEL.)
- ELEVATIONS SHOWN AT THE WELL HEAD, AS WELL AS HORIZONTAL CONTROL, ARE BASED ON GPS-RTK VALUES DERIVED FROM DOING 2-HOUR STATIC GPS SESSIONS AND REDUCTIONS USING O.P.U.S. SOLUTIONS.
VERTICAL = NAVD88; HORIZONTAL = NAD83/92
- THE BEARINGS SHOWN HEREON ARE BASED ON GPS OBSERVATIONS BETWEEN THE MONUMENTS SHOWN HEREON AS FOUND ON THE FIELD DATE BELOW.
- DISTANCES SHOWN ARE AT GROUND LEVEL, AS MEASURED IN THE FIELD, WITH TIES TO WELLS MEASURED AT A PERPENDICULAR TO SECTION LINES.

LEGEND

- = EXISTING MONUMENT = BOTTOM HOLE BH= BOTTOM HOLE
 = PROPOSED WELL = EXISTING WELL

NOTES:

- BARRON 39-18 TO BE AT 2047' FSL, 1725' FEL.
 BOTTOM HOLE AT 1280' FSL & 155' FEL.
 BARRON FEDERAL 24-18 TO BE AT 2047' FSL, 1741' FEL.
 BOTTOM HOLE AT 2545' FNL & 1185' FEL.
 BARRON FEDERAL 37-18 TO BE AT 2047' FSL, 1757' FEL.
 BOTTOM HOLE AT 165' FSL & 1310' FEL.
 BARRON FEDERAL 23-18 TO BE AT 2047' FSL, 1773' FEL.
 BOTTOM HOLE AT 1424' FSL & 2318' FEL.
 HSR-STEWART 10-18A IS 2047' FSL, 1823' FEL.



REVISIONS

INITIAL	DATE
SMF	08-14-09
SMF	09-18-09

PREPARED BY:



KERR-MCGEE OIL & GAS ONSHORE LP

FIELD DATE:
07-16-09

DRAWING DATE:
07-17-09

BY:
SMF

PAD NAME:
BARRON 4 PAD

SURFACE LOCATION:

WELD COUNTY, COLORADO
NE 1/4 SE 1/4, SEC. 18, T3N, R18W