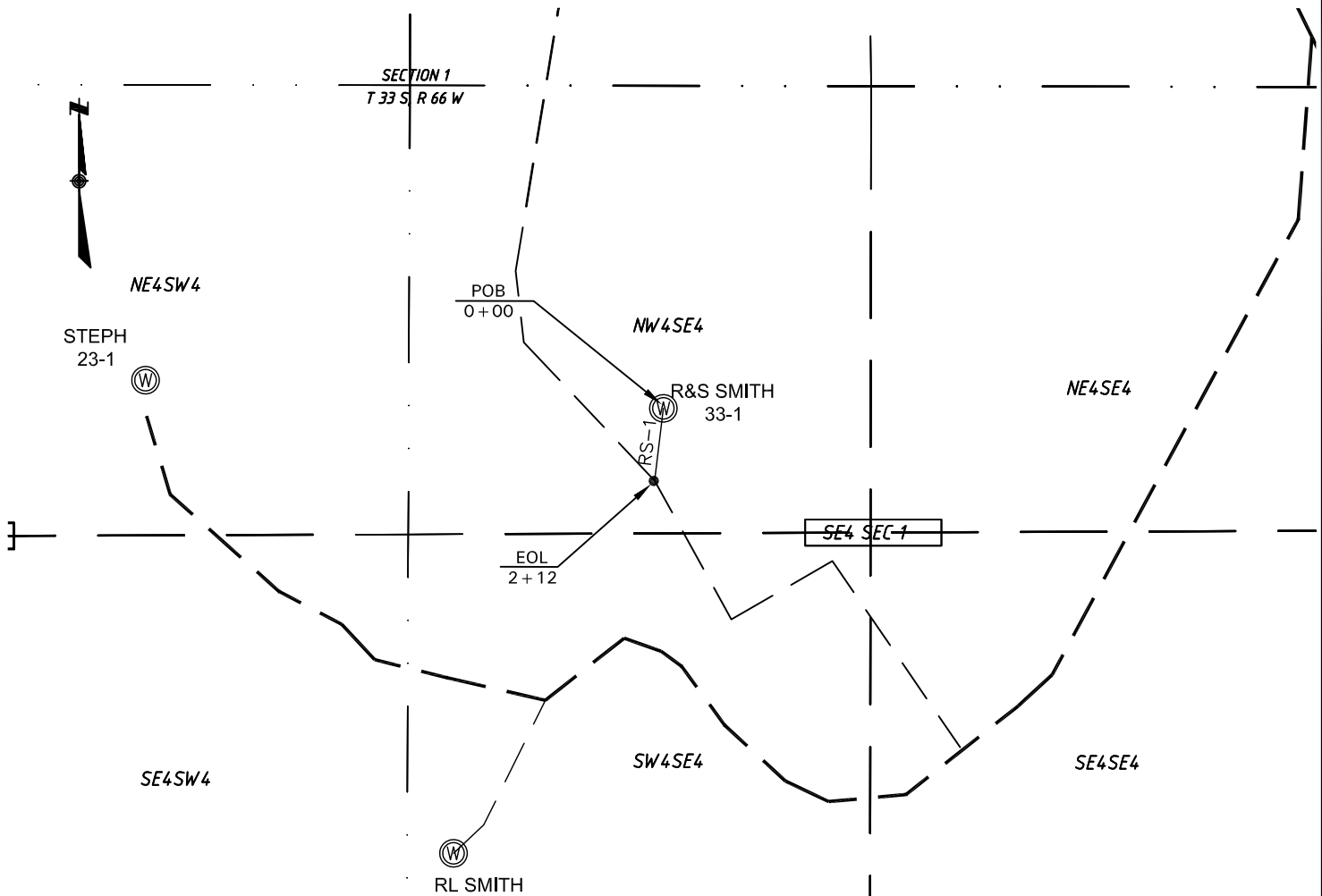


PROPOSED ROW for R&S Smith 33-1



LEGEND:

- ⊙ = WELL LOCATION
- = PROPOSED R.O.W.
- - - = EXISTING R.O.W.
- = SECTION LINES
- = CALCULATED SECTION LINES
- = CALCULATED 1/4 SECTION LINES
- = CALCULATED 1/16 SECTION LINES

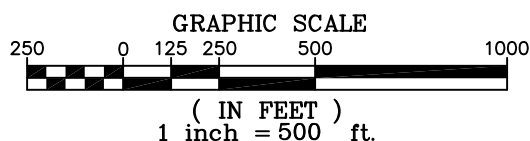
ROW TABLE						
Sec - Township - Range	1/4 Section	Width	Feet	Rods	Miles	Acres
1 - T33S - R66W	NW4SE4	60	212	12.8	0.04	0.29
Total			212	12.8	0.04	0.29

R&S SMITH LINE TABLE		
LINE	BEARING	LENGTH
RS-1	S06°52'34"W	212
Total		212

NOTICE:

SOME INFORMATION SHOWN HEREON IS BASED ON INFORMATION TAKEN FROM RECORD INFORMATION, PREVIOUS SURVEYS, PLATS AND SURVEYS BY OTHER SURVEYORS, OR COLLATORAL EVIDENCE AND MAY NOT REFLECT THAT WHICH MAY BE DISCLOSED BY A COMPLETE BOUNDARY SURVEY. **THIS SKETCH IS NOT TO BE RELIED UPON FOR THE ESTABLISHMENT OF SURFACE BOUNDARIES, FENCES, BUILDINGS, OR OTHER FUTURE IMPROVEMENTS.**

Lee Shields
 Lee Shields, CO PLS #37960
 Date Platted December 04, 2007



Pioneer Natural Resources USA, Inc.
 PROPOSED ROW
 FOR
 R&S Smith 33-1
 Sec 1, T33S, R66W 6th P.M.
 Las Animas County, Colorado

SHIELDS SURVEY Ltd. Co.
 Raton, New Mexico 87740
 (505)445-1232