

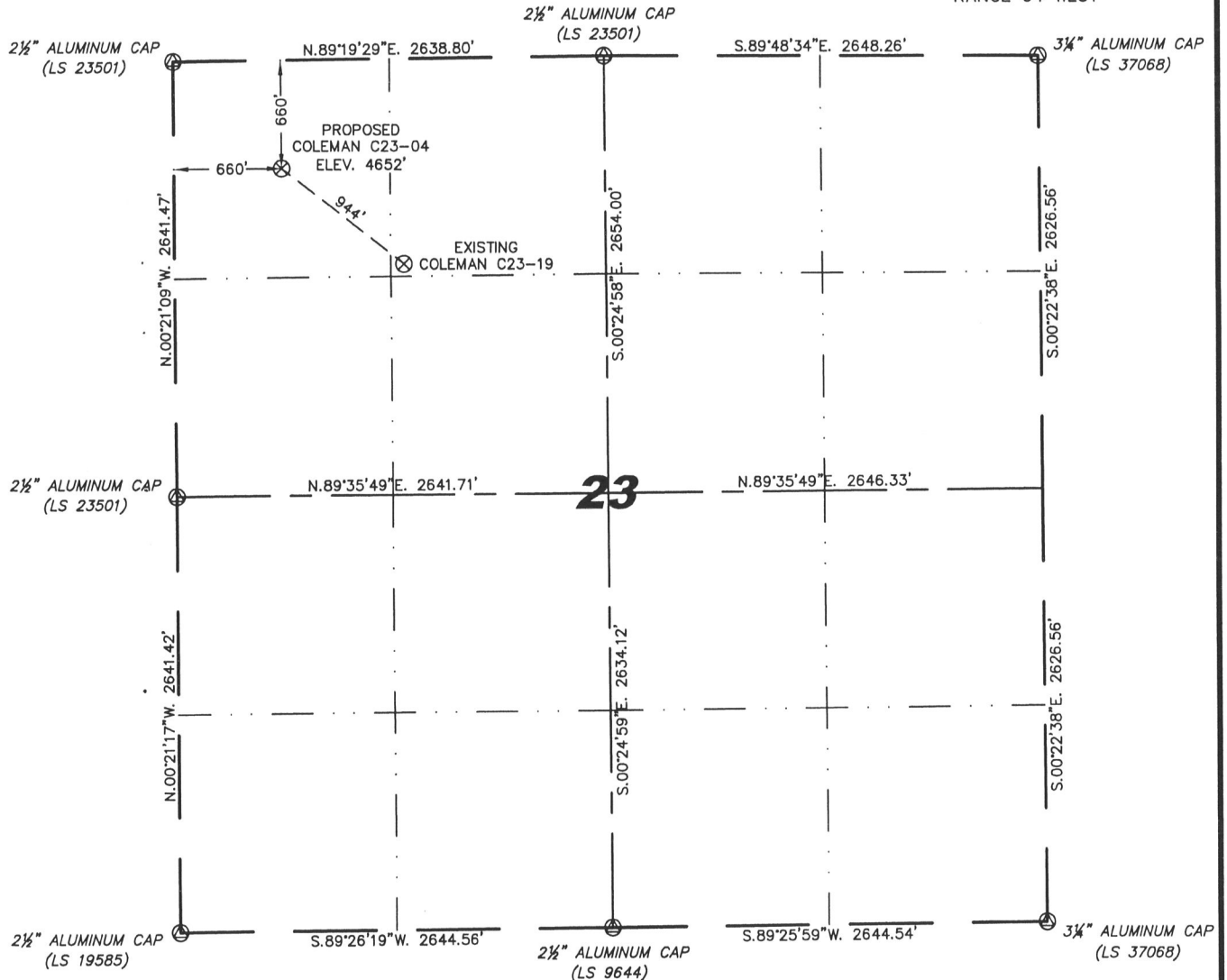
Steil Surveying Services, LLC

1102 West 19th Street P.O. BOX 2073

Cheyenne, Wyoming 82009

WELL LOCATION CERTIFICATE
THIS MAP DOES NOT REPRESENT A BOUNDARY SURVEY

SECTION 23
TOWNSHIP 4 NORTH
RANGE 64 WEST



0 1000

Scale: 1" = 1000'

IN ACCORDANCE WITH A REQUEST FROM JACK FINCHAM - NOBLE ENERGY INC, STEIL SURVEYING SERVICES, LLC HAS DETERMINED THE LOCATION OF THE COLEMAN C23-04 WELL TO BE 660' FNL, 660' FWL, AS MEASURED AT NINETY (90) DEGREES FROM THE SECTION LINES, SECTION 23, TOWNSHIP 4 NORTH, RANGE 64 WEST, 6TH PRINCIPLE MERIDIAN, WELD COUNTY, COLORADO.

I HEREBY CERTIFY THAT THIS WELL LOCATION CERTIFICATE WAS PREPARED BY ME, OR UNDER MY DIRECT SUPERVISION, THAT THE FIELD WORK WAS COMPLETED ON 06/23/2009, FOR AND ON BEHALF OF NOBLE ENERGY INC, THAT IT IS NOT A LAND SURVEY PLAT OR AN IMPROVEMENT SURVEY PLAT, AND THAT IT IS NOT TO BE RELIED UPON FOR ESTABLISHMENT OF FENCE, BUILDING, OR OTHER FUTURE IMPROVEMENT LINES.

NOTES:

- 1) BASIS OF BEARINGS FOR THIS MAP ARE BASED UPON GPS OBSERVATIONS MADE ON 10/12/2007 BETWEEN MONUMENTS LOCATED AT THE SOUTHEAST SECTION CORNER AND THE NORTHEAST SECTION CORNER OF SAID SECTION AND WITH ALL BEARINGS SHOWN HEREON RELATIVE THERETO.
- 2) ELEVATIONS ARE BASED UPON NGS OPUS SOLUTION NAVD 88 DATUM.
- 3) THE NEAREST EXISTING WELL IS: COLEMAN C23-19, 944' SOUTHEAST.
- 4) SEE VISIBLE IMPROVEMENTS EXHIBIT FOR ALL IMPROVEMENTS WITHIN 400'.
- 5) THE LOCATION FALLS IN IRRIGATED CROP LAND.

LATITUDE & LONGITUDE (NAD 83 SURFACE HOLE):

LATITUDE: N 40.30341°

LONGITUDE: W 104.52501°

PDOP: 2.4

QUARTER-QUARTER: NW/4NW/4

NEAREST PROPERTY LINE: 660' TO THE NORTH

LEGEND

⊙ FOUND SURVEY MONUMENT PER MONUMENT RECORD - EXCEPTIONS NOTED.

(C) CALCULATED DIMENSION



Completed 06/30/2009

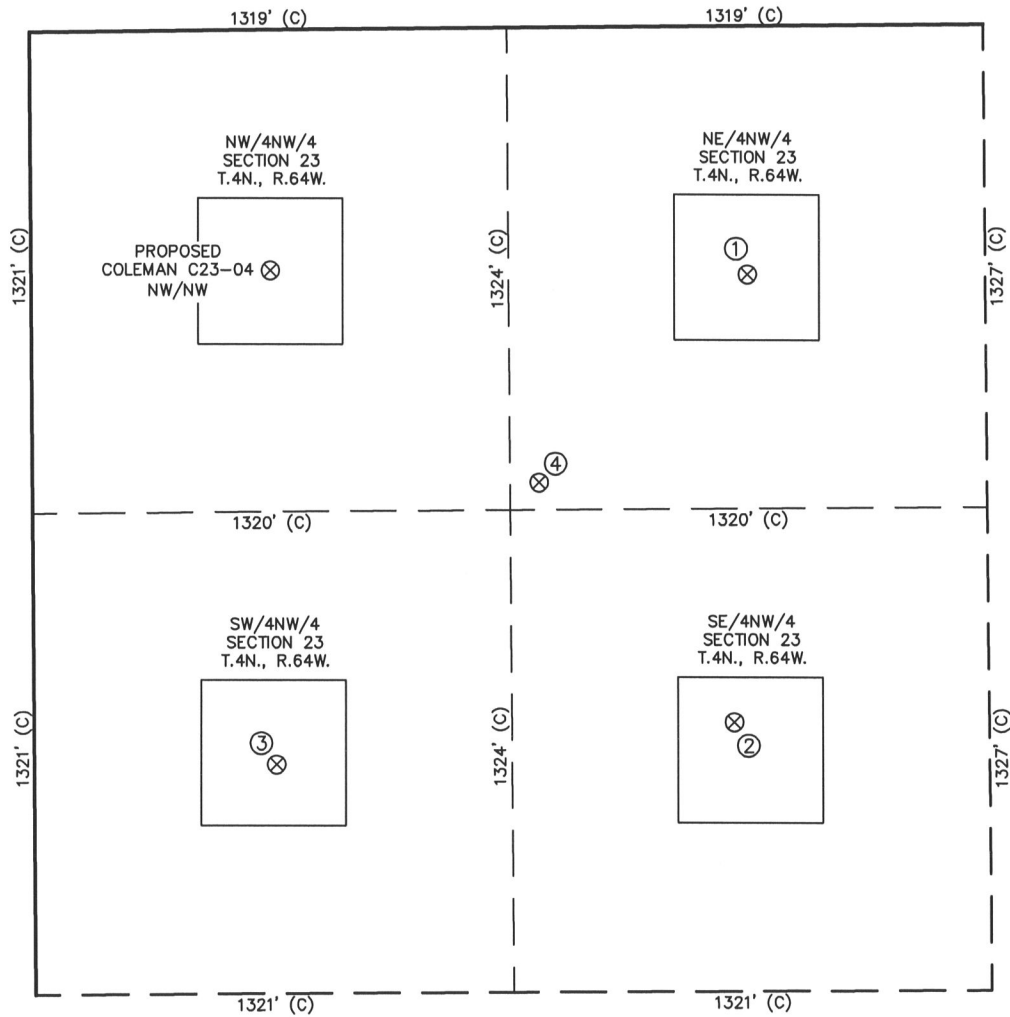
David C. Holmes
Professional Land Surveyor Registration No. 32828
State of Colorado

JOB #: 09086

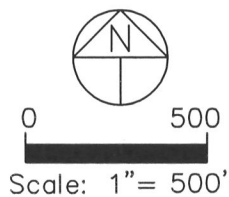
NOTICE: According to Colorado law you MUST commence any legal action based upon any defect in this W.L.C. within three years after you first discover such defect. In no event may any action based upon any defect in this W.L.C. be commenced more than ten years from this sold date of the certification shown hereon.

SITE SKETCH – COLEMAN C23-04

SECTION 23
TOWNSHIP 4 NORTH
RANGE 64 WEST

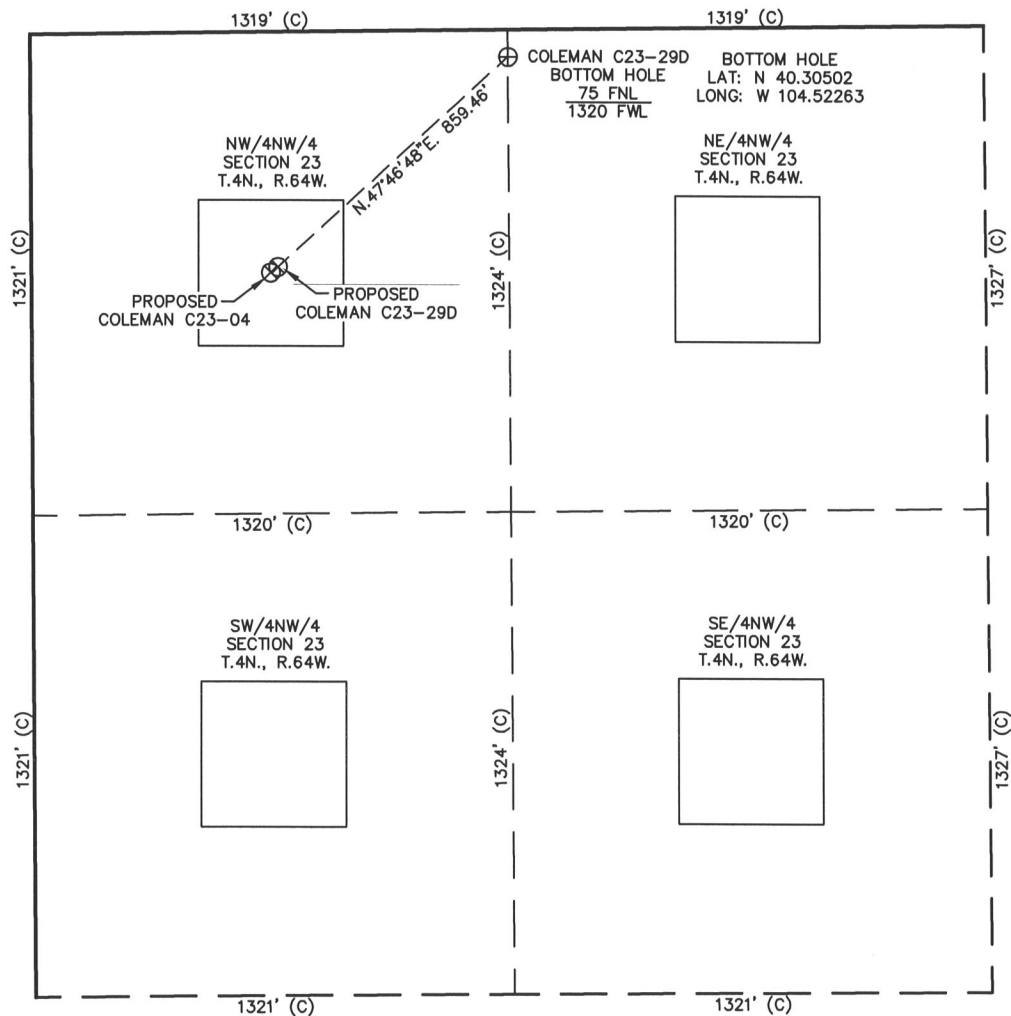
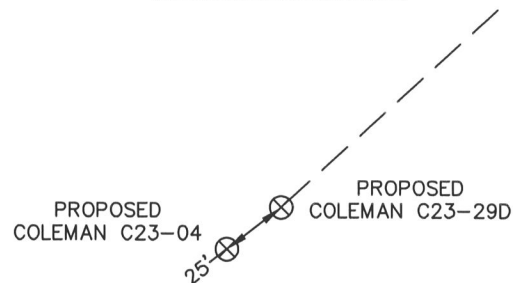
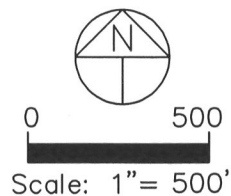


①	②	③	④
VOLKENS NO. 2 NE/NW SEC. 23 682' FNL 1982' FNL EL 4653' N 40.30335 W 104.52027 PDOP 2.0	COLEMAN 23-614 SE/NW SEC. 23 1912' FNL 1936' FNL EL 4657' N 40.29998 W 104.52045 PDOP 2.0	VOLKENS NO. 1 SW/NW SEC. 23 2016' FNL 668' FNL EL 4655' N 40.29969 W 104.52500 PDOP 2.3	COLEMAN C23-19 NE/SW SEC. 23 1249' FNL 1400' FNL EL 4654' N 40.30179 W 104.52236 PDOP 2.0



- NOTES:
- 1) THIS SKETCH DOES NOT REPRESENT A BOUNDARY SURVEY.
 - 2) THE DATUM FOR THE LATITUDES AND LONGITUDES ON THIS SKETCH IS NAD83.

SITE SKETCH

SECTION 23
TOWNSHIP 4 NORTH
RANGE 64 WESTWELL PAD DETAIL

NOTES:

- 1) THIS SKETCH DOES NOT REPRESENT A BOUNDARY SURVEY.
- 2) THE DATUM FOR THE LATITUDES AND LONGITUDES ON THIS SKETCH IS NAD83.