

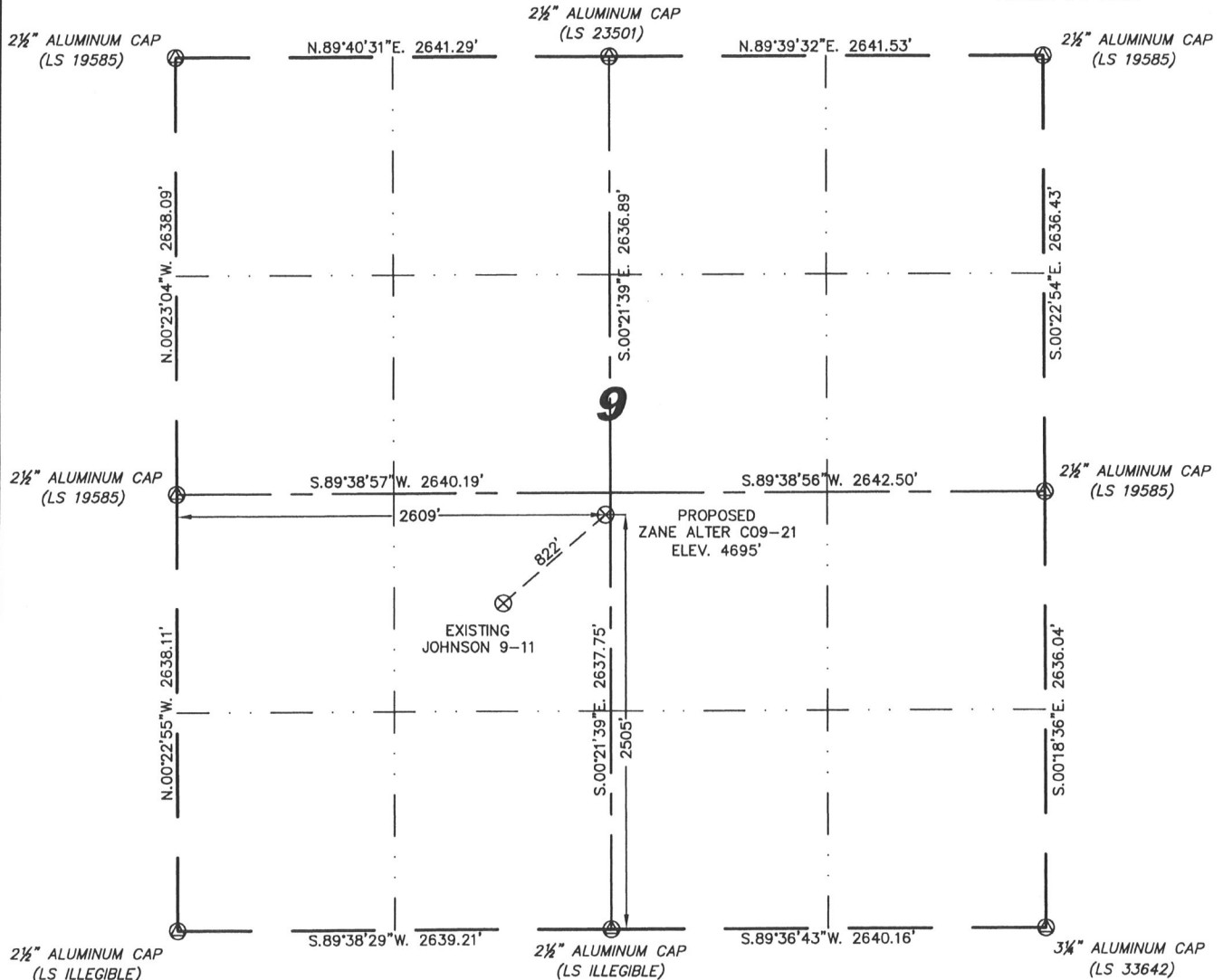
Steil Surveying Services, LLC

1102 West 19th Street P.O. BOX 2073

Cheyenne, Wyoming 82009

WELL LOCATION CERTIFICATE
THIS MAP DOES NOT REPRESENT A BOUNDARY SURVEY

SECTION 9
TOWNSHIP 4 NORTH
RANGE 64 WEST



IN ACCORDANCE WITH A REQUEST FROM ERIK VAN DECAR - NOBLE ENERGY INC, STEIL SURVEYING SERVICES, LLC HAS DETERMINED THE LOCATION OF THE ZANE ALTER C09-21 WELL TO BE 2505' FSL, 2609' FWL, AS MEASURED AT NINETY (90) DEGREES FROM THE SECTION LINES, SECTION 9, TOWNSHIP 4 NORTH, RANGE 64 WEST, 6TH PRINCIPLE MERIDIAN, WELD COUNTY, COLORADO.

I HEREBY CERTIFY THAT THIS WELL LOCATION CERTIFICATE WAS PREPARED BY ME, OR UNDER MY DIRECT SUPERVISION, THAT THE FIELD WORK WAS COMPLETED ON 07/29/2009, FOR AND ON BEHALF OF NOBLE ENERGY INC, THAT IT IS NOT A LAND SURVEY PLAT OR AN IMPROVEMENT SURVEY PLAT, AND THAT IT IS NOT TO BE RELIED UPON FOR ESTABLISHMENT OF FENCE, BUILDING, OR OTHER FUTURE IMPROVEMENT LINES.



0 1000

Scale: 1" = 1000'

NOTES:

- 1) BASIS OF BEARINGS FOR THIS MAP ARE BASED UPON GPS OBSERVATIONS MADE ON 10/17/2007 BETWEEN MONUMENTS LOCATED AT THE SOUTHEAST SECTION CORNER AND THE NORTHEAST SECTION CORNER OF SAID SECTION AND WITH ALL BEARINGS SHOWN HEREON RELATIVE THERETO.
- 2) ELEVATIONS ARE BASED UPON NGS OPUS SOLUTION NAVD 88 DATUM.
- 3) THE NEAREST EXISTING WELL IS: JOHNSON 9-11, 822' SOUTHWEST.
- 4) SEE VISIBLE IMPROVEMENTS EXHIBIT FOR ALL IMPROVEMENTS WITHIN 400'.
- 5) THE LOCATION FALLS IN IRRIGATED CROP LAND.

LATITUDE & LONGITUDE (NAD 83 SURFACE HOLE):

LATITUDE: N 40.32652°
LONGITUDE: W 104.55567°
PDOP: 2.1

QUARTER-QUARTER: NE/4SW/4

NEAREST PROPERTY LINE: 31' TO THE EAST
134' TO THE NORTH

LEGEND

- (M) FOUND SURVEY MONUMENT PER MONUMENT RECORD - EXCEPTIONS NOTED.
- (C) CALCULATED DIMENSION

NOTICE: According to Colorado law you MUST commence any legal action based upon any defect in this W.L.C. within three years after you first discover such defect. In no event may any action based upon any defect in this W.L.C. be commenced more than ten years from this sold date of the certification shown hereon.

David C. Holmes
Professional Land Surveyor Registration No. 32828
State of Colorado

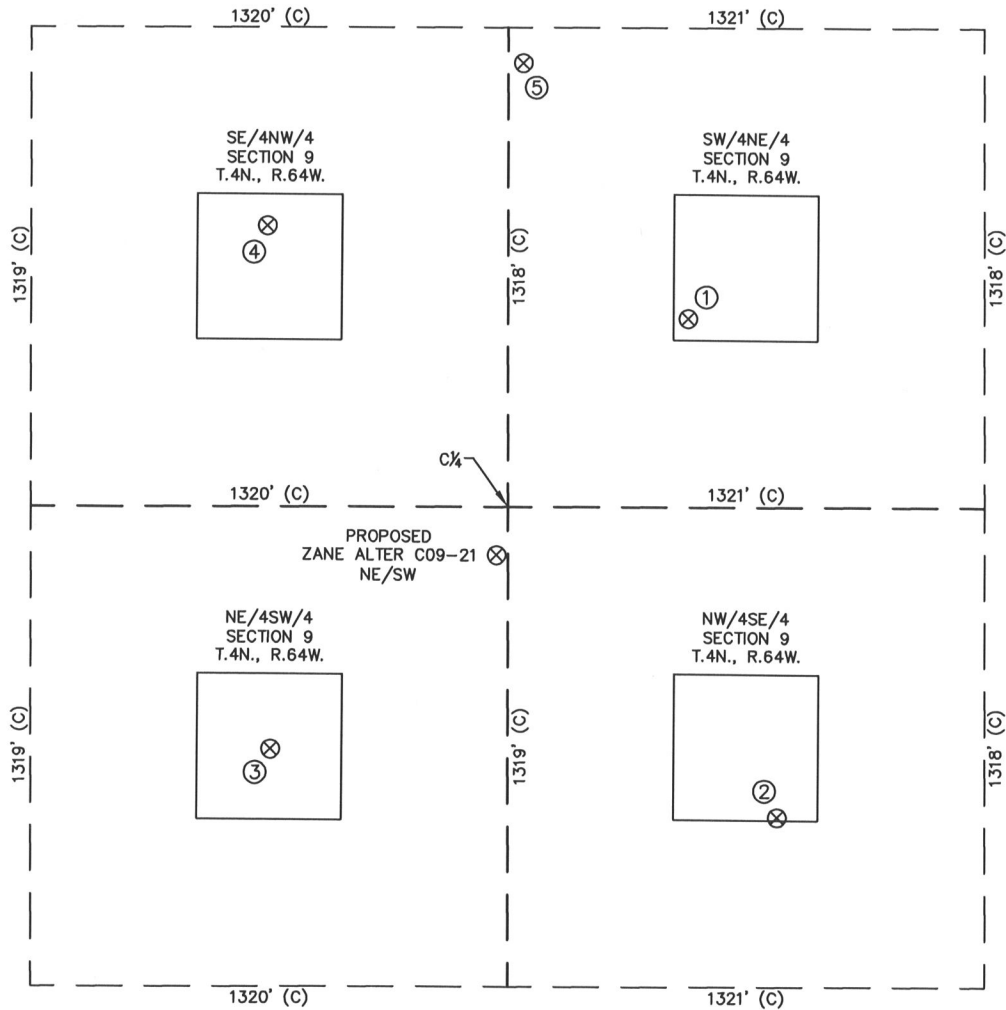
JOB #: 07086

Completed 08/03/2009

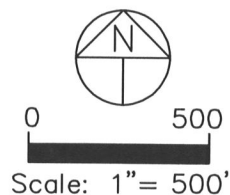


SITE SKETCH – ZANE ALTER C09-21

SECTION 9
TOWNSHIP 4 NORTH
RANGE 64 WEST



①	②	③	④	⑤
REINICK 9-7 SW/NE SEC. 9 2118' FNL 2142' FEL EL 4696' N 40.32830 E 104.55375 PDOP 2.0	HAGEN 9-10 NW/SE SEC. 9 1785' FSL 1895' FEL EL 4683' N 40.32453 E 104.55289 PDOP 2.2	JOHNSON 9-11 NE/SW SEC. 9 1971' FSL 1983' FWL EL 4695' N 40.32506 E 104.55792 PDOP 2.5	SMITH NO. 3 SE/NW SEC. 9 1865' FNL 1974' FWL EL 4722' N 40.32901 E 104.55793 PDOP 2.5	REINICK C9-18 SW/NE SEC. 9 1416' FNL 2599' FEL EL 4711' N 40.33023 E 104.55538 PDOP 2.4



- NOTES:
- THIS SKETCH DOES NOT REPRESENT A BOUNDARY SURVEY.
 - THE DATUM FOR THE LATITUDES AND LONGITUDES ON THIS SKETCH IS NAD83.